

# 255 TENTH AVENUE



# SPACE DETAILS

## LOCATION

Southwest corner of West 25th Street

## APPROXIMATE SIZE

Space A

Ground Floor 810 SF

Basement 820 SF

Space B

Ground Floor 1,034 SF

## CEILING HEIGHT

Ground Floor 15 FT

Basement 10 FT

## FRONTAGE

Space A

52 FT of wraparound

Space B

41 FT on West 25th Street

## TERM

Negotiable

## POSSESSION

First Quarter 2020

## NEIGHBORS

Pace Gallery (coming soon), The Avenues School, Chase Bank, Marquee, CVS pharmacy and Doosan Gallery

## COMMENTS

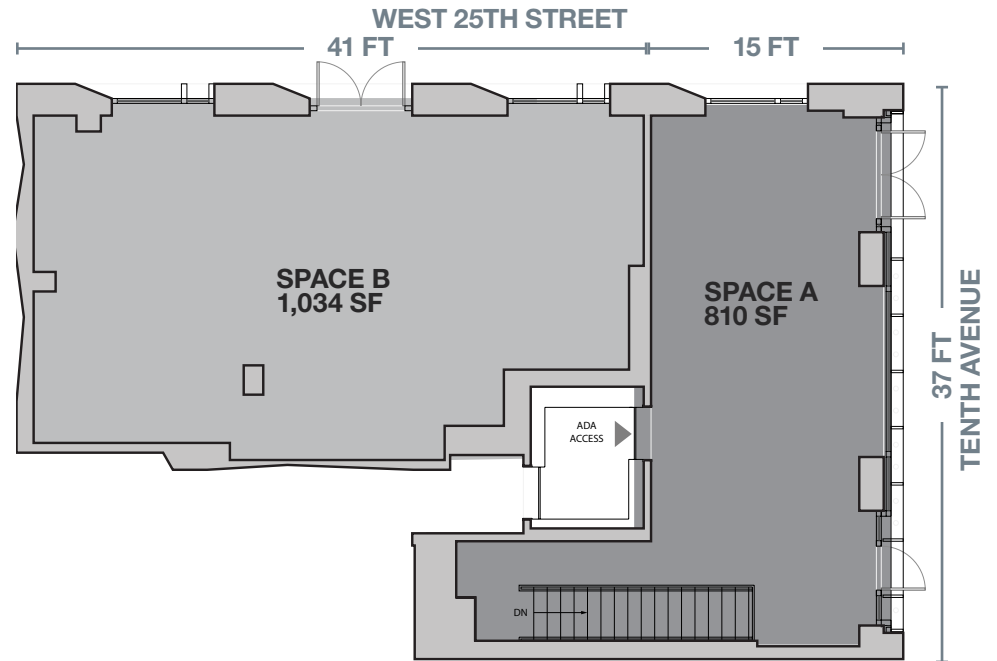
Situated at the base of a newly constructed eight-unit residential condominium

Adjacent to WeWork's newest Chelsea location at 511 West 25th Street (occupying over 60,000 SF)

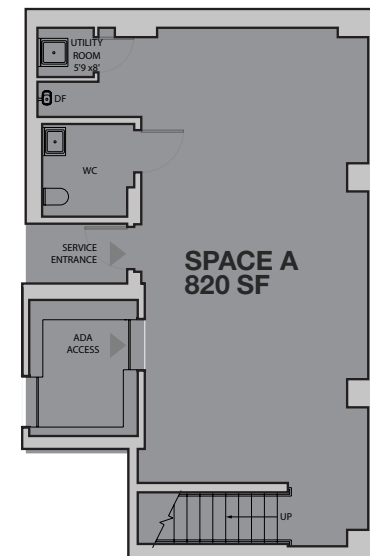
Steps from Hudson Yards and various new residential developments

No cooking food uses allowed

## GROUND FLOOR



## BASEMENT



# AREA RETAIL



## CONTACT EXCLUSIVE AGENT

**HARRISON ABRAMOWITZ**  
212.372.2467  
habramowitz@ngkf.com



NGKF.COM



RKF.COM