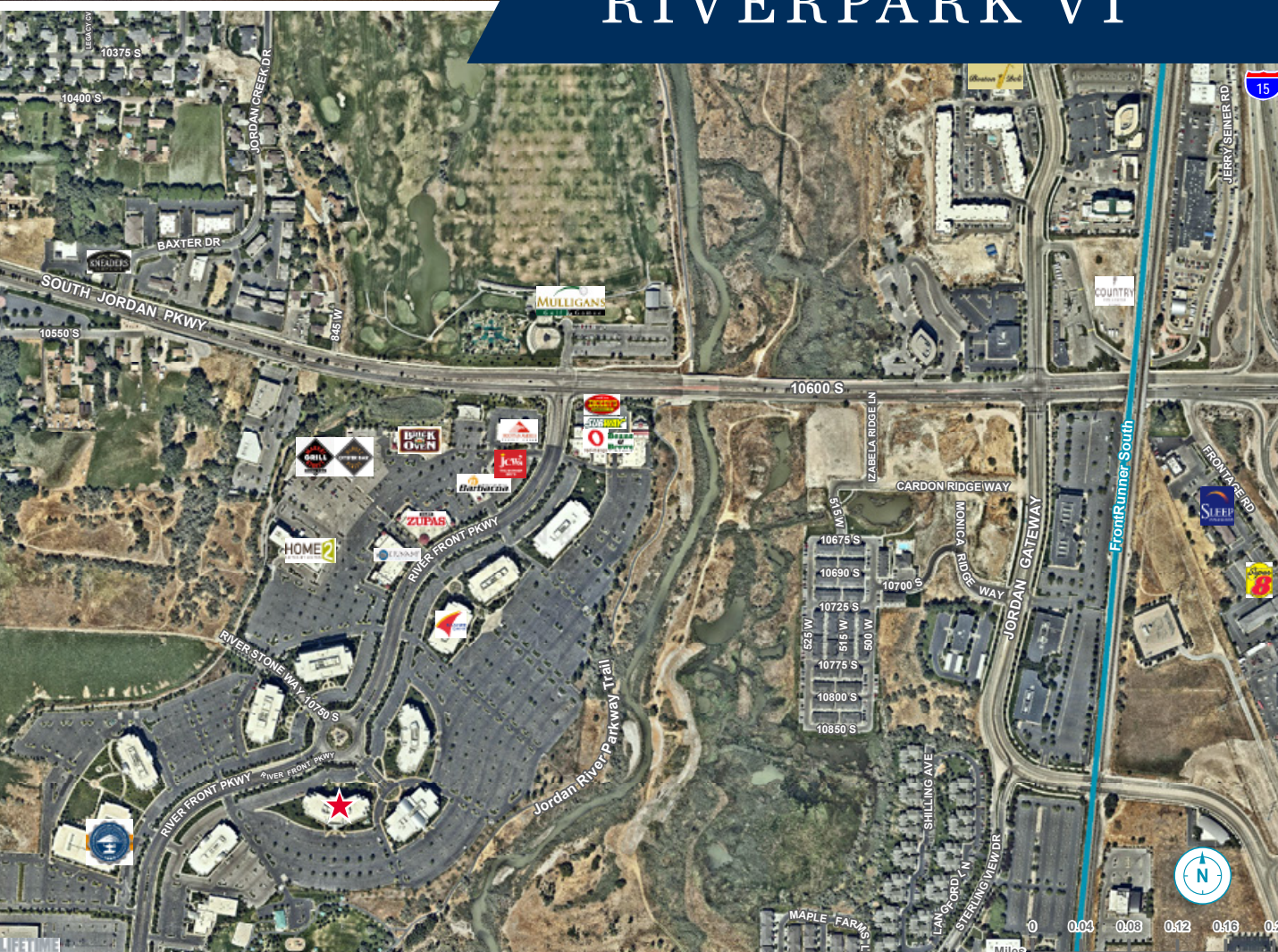




**SUBLEASE**

# RIVERPARK VI



**Jeff Rossi**  
Executive Director  
+1 801 303 5452  
jeff.rossi@cushwake.com

**Justin Bailey**  
Director  
+1 801 303 5493  
justin.bailey@cushwake.com

170 South Main Street Suite 1600 | Salt Lake City, UT 84101  
Main +1 801 322 2000 | Fax +1 801 322 2040 [cushmanwakefield.com](http://cushmanwakefield.com)

# RIVERPARK VI

10897 SOUTH RIVER FRONT PARKWAY  
SOUTH JORDAN, UTAH

10,000 - 52,308 SF  
AVAILABLE

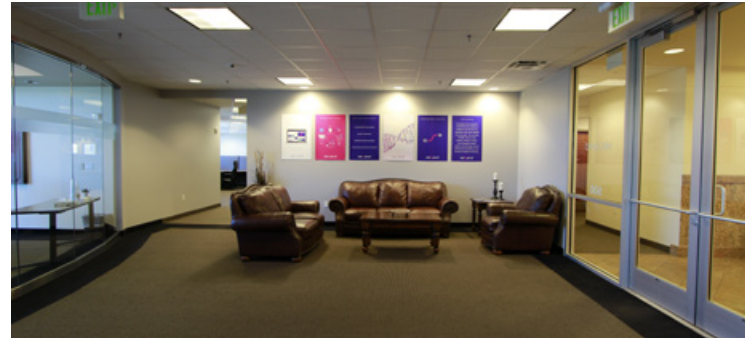


Cushman & Wakefield Copyright 2016. No warranty or representation, express or implied, is made to the accuracy or completeness of the information contained herein, and same is submitted subject to errors, omissions, change of price, rental or other conditions, withdrawal without notice, and to any special listing conditions imposed by the property owner(s). As applicable, we make no representation as to the condition of the property (or properties) in question. (path:G:\Gigas\1 - Projects\Rossi, Jeff\1 - Flyer\Riverpark6\_Sublease)

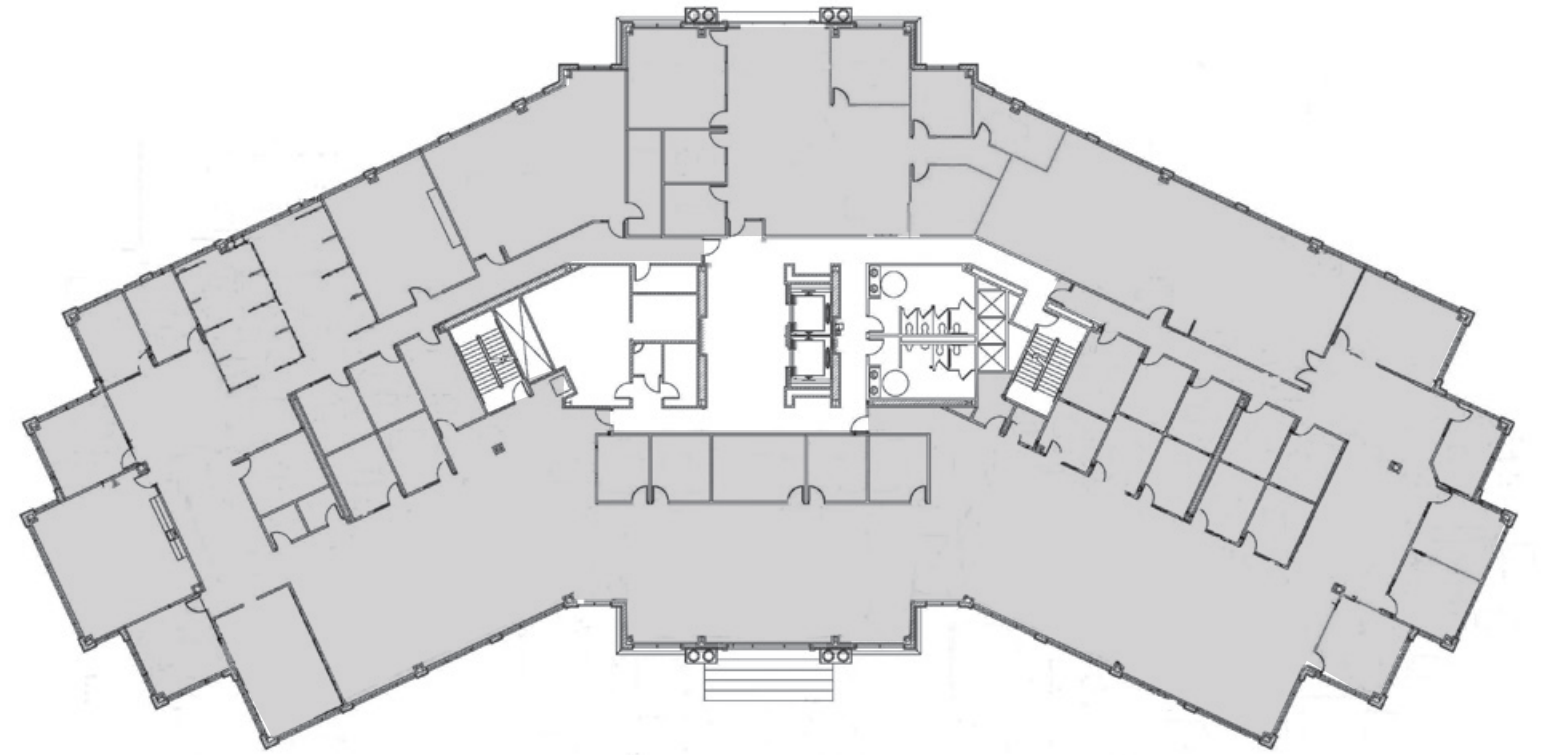


## Property Highlights

- 10,000 – 52,308 SF available
- 4th and 5th Floor
  - 4th Floor – 27,438 SF
  - 5th Floor – 24,870 SF
- Lease rate \$20.00 full service
- Sublease expiration 8/31/2022
- 4.25/1,000 parking ratio
- Some furniture available



### RIVERPARK VI - 4TH FLOOR



### RIVERPARK VI - 5TH FLOOR

