

BROWN ROAD ORION TWP., MICHIGAN

LAND/BUILD-TO-SUIT
17.31 Acres Available



**SIGNATURE
ASSOCIATES**
KNOW SIGNATURE | KNOW RESULTS



PROPERTY FEATURES

- 17.31 acres available, 12.51 acres useable
- Industrial zoning
- Build-to-suit from 60,000-160,000 sq. ft.
- Eligible for 12-year tax abatement
- One of the last remaining large sites in area
- Close to two I-75 on ramps
- Asking Price: \$3,130,875.00



For more information, please contact:

PAUL HOGE
(248) 948 0103
paulhoge@signatureassociates.com

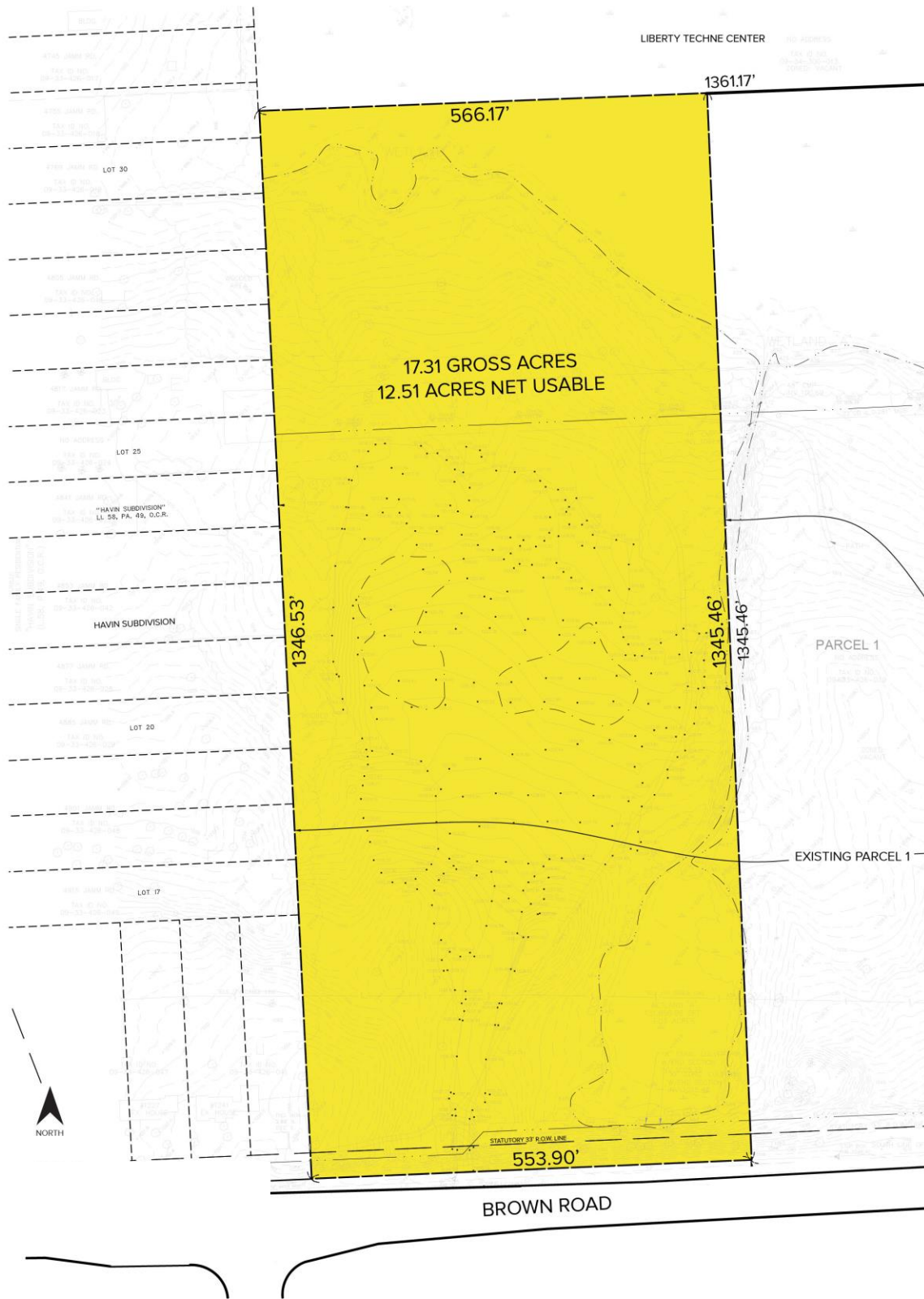
SIGNATURE ASSOCIATES
One Towne Square, Suite 1200
Southfield, MI 48076
www.signatureassociates.com

Brown Road – Orion Twp., Michigan

Land For Sale

17.31
Acres
AVAILABLE

Site Plan



For more information, please contact:

PAUL HOGE
(248) 948 0103
paulhoge@signatureassociates.com

SIGNATURE ASSOCIATES
One Towne Square, Suite 1200
Southfield, MI 48076
www.signatureassociates.com