

FREMONT OFFICE CENTER

39300 CIVIC CENTER DRIVE & 2201 WALNUT AVENUE, FREMONT

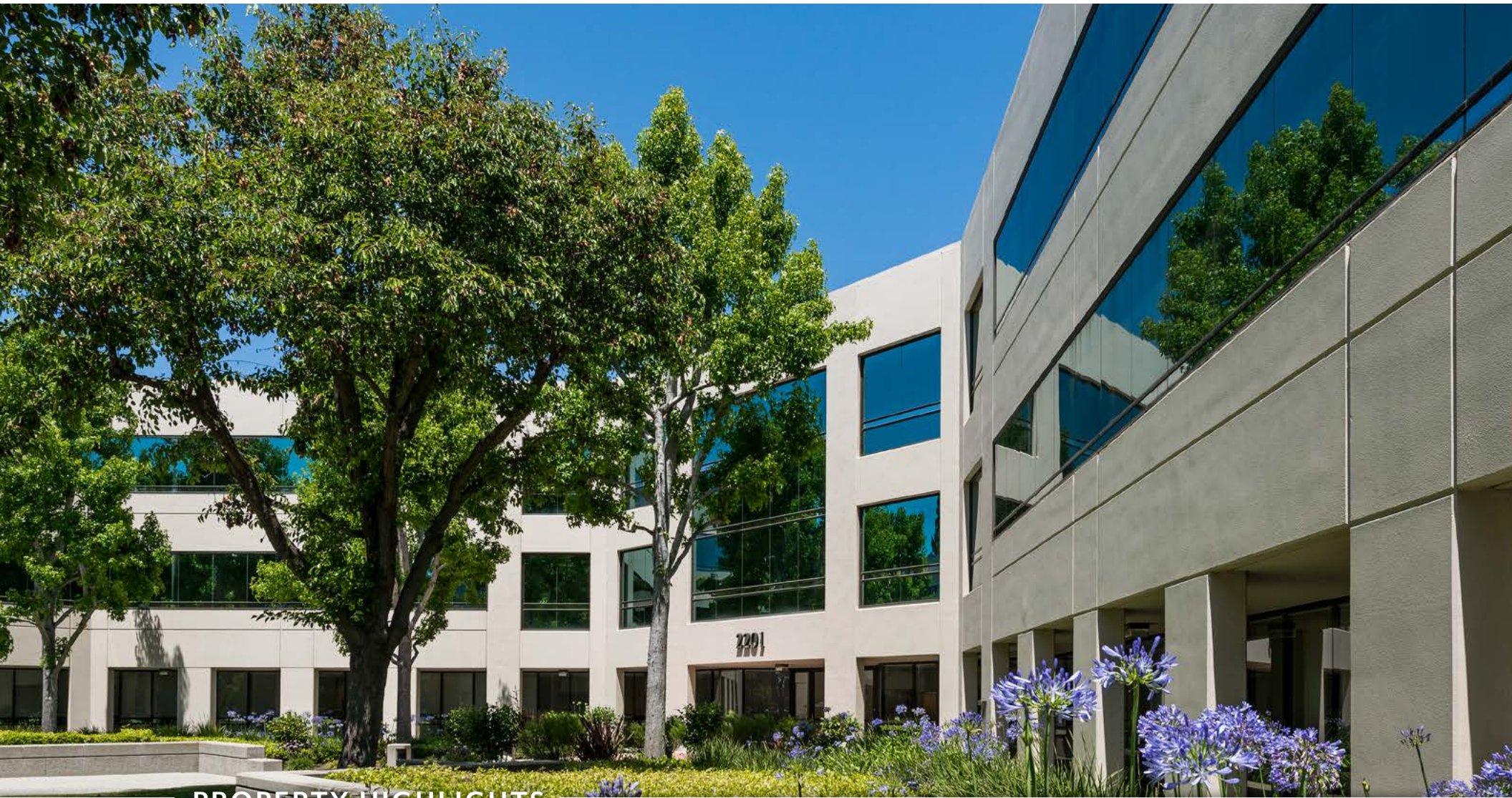


SCOTT DEVER
Managing Director
+1 408 615 3457
scott.dever@cushwake.com
LIC. 01890552

WALT STEPHENSON
Managing Director
+1 408 615 3458
walt.stephenson@cushwake.com
LIC. 01793438



FREMONT OFFICE CENTER



PROPERTY HIGHLIGHTS

- Adjacent to Fremont BART station
- Numerous walkable amenities
- Reputable local ownership
- Onsite services include:
 - Property management
 - Maintenance engineer
 - Day porter
 - Security

FREMONT OFFICE CENTER



IDEAL LOCATION

Fremont Office Center is located within walking distance to numerous restaurants, retailers, and many other nearby amenities. With BART located adjacent to the property, Fremont Office Center offers excellent transportation options.

FREMONT OFFICE CENTER



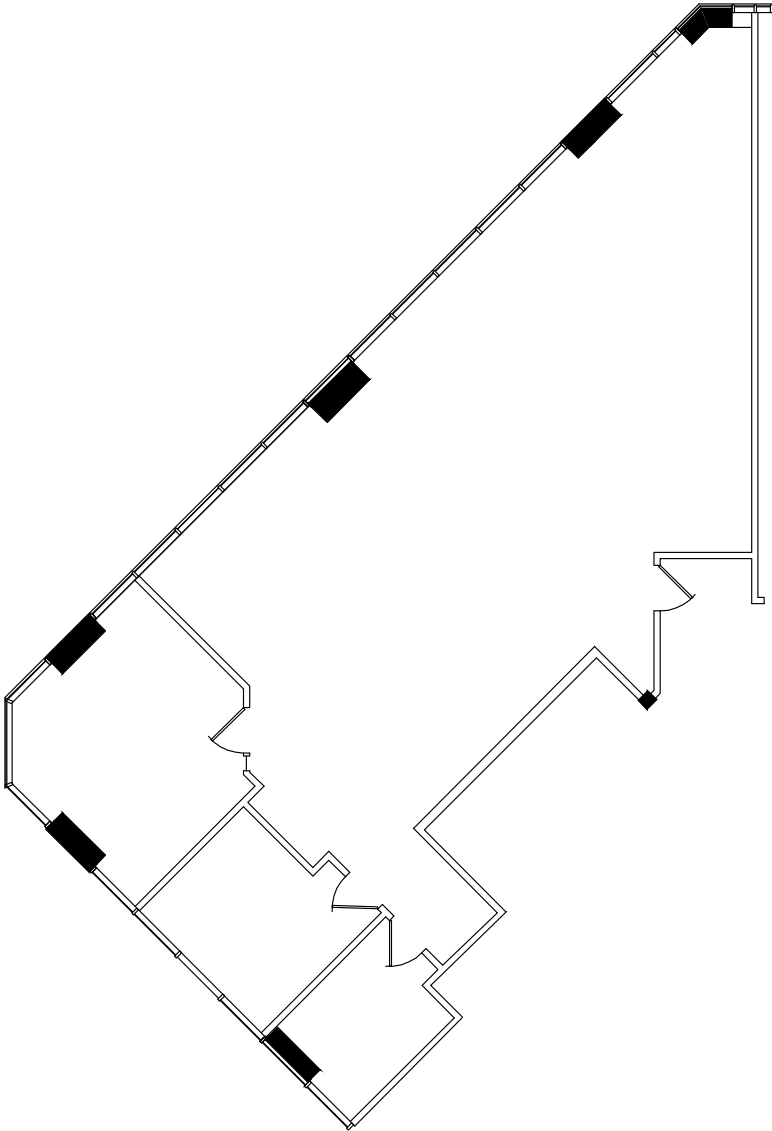
DOWNTOWN DISTRICT

With its ideal Silicon Valley location, Downtown Fremont is poised to become a vibrant and sustainable urban mixed use district that will serve as a destination for the city and region. Incentives are in place for new development that will help create an exciting, new “strategically urban” district in Fremont.

FREMONT OFFICE CENTER

2201 WALNUT AVENUE SUITE 185

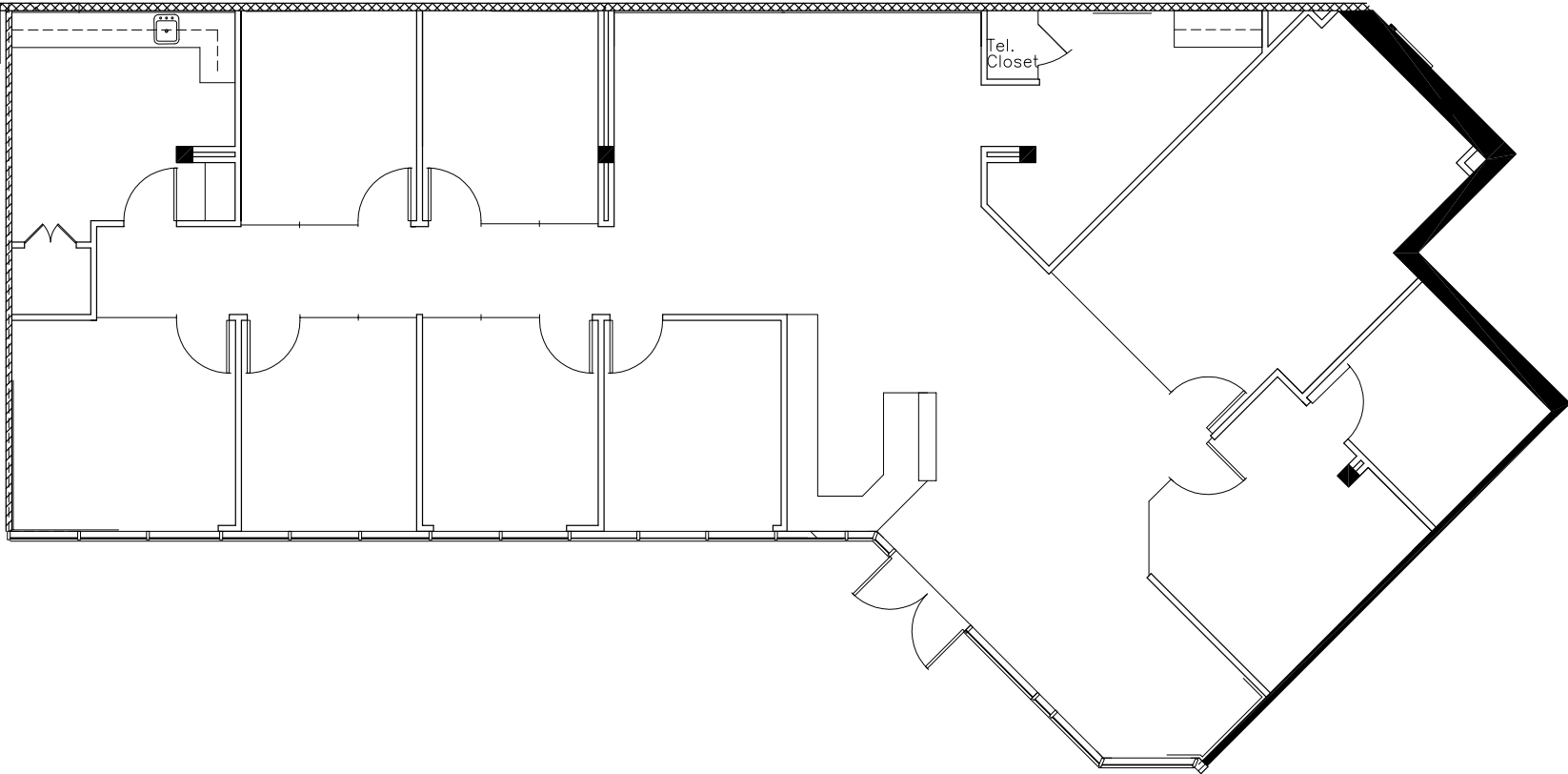
±1,916 SF
AVAILABLE WITH 30 DAYS' NOTICE



FREMONT OFFICE CENTER

2201 WALNUT AVENUE SUITE 190

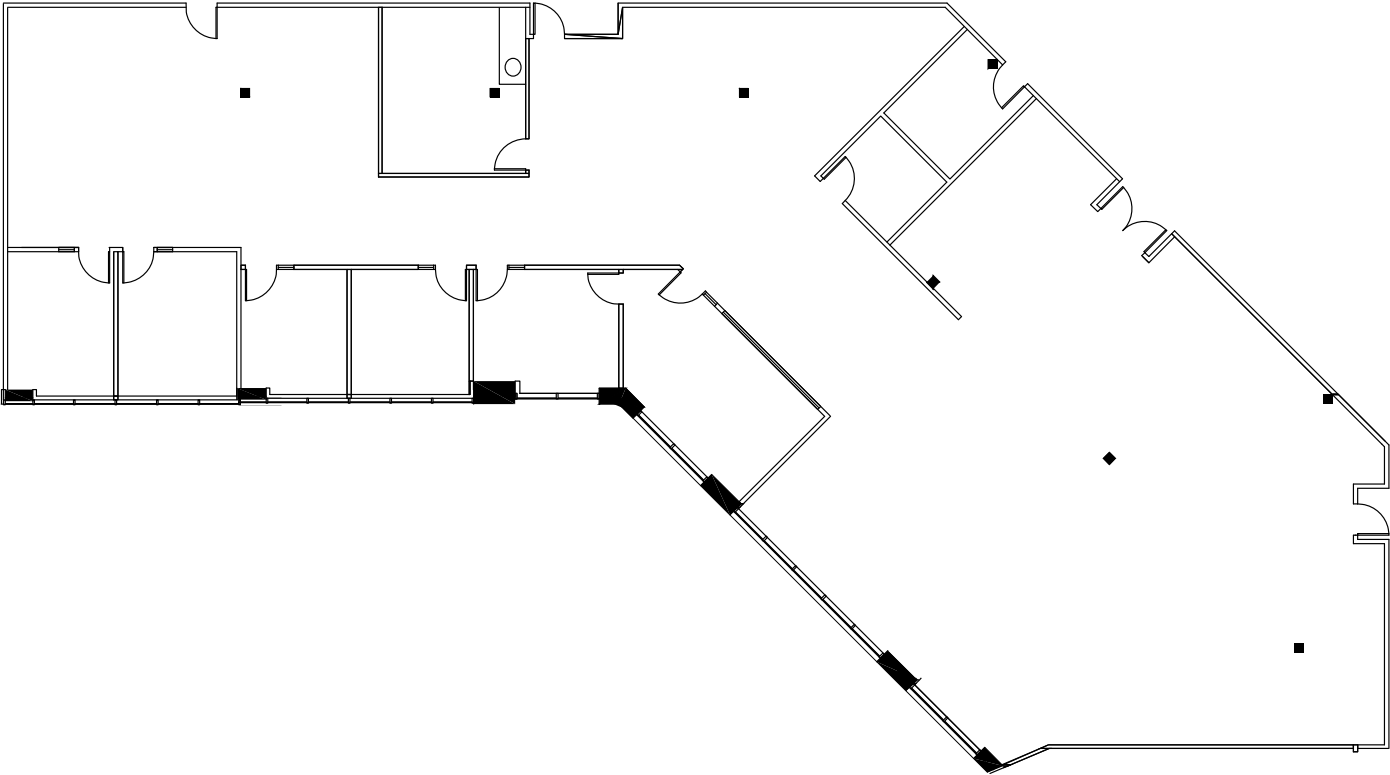
±3,326 SF
AVAILABLE JUNE 1, 2020



FREMONT OFFICE CENTER

2201 WALNUT AVENUE
SUITE 208

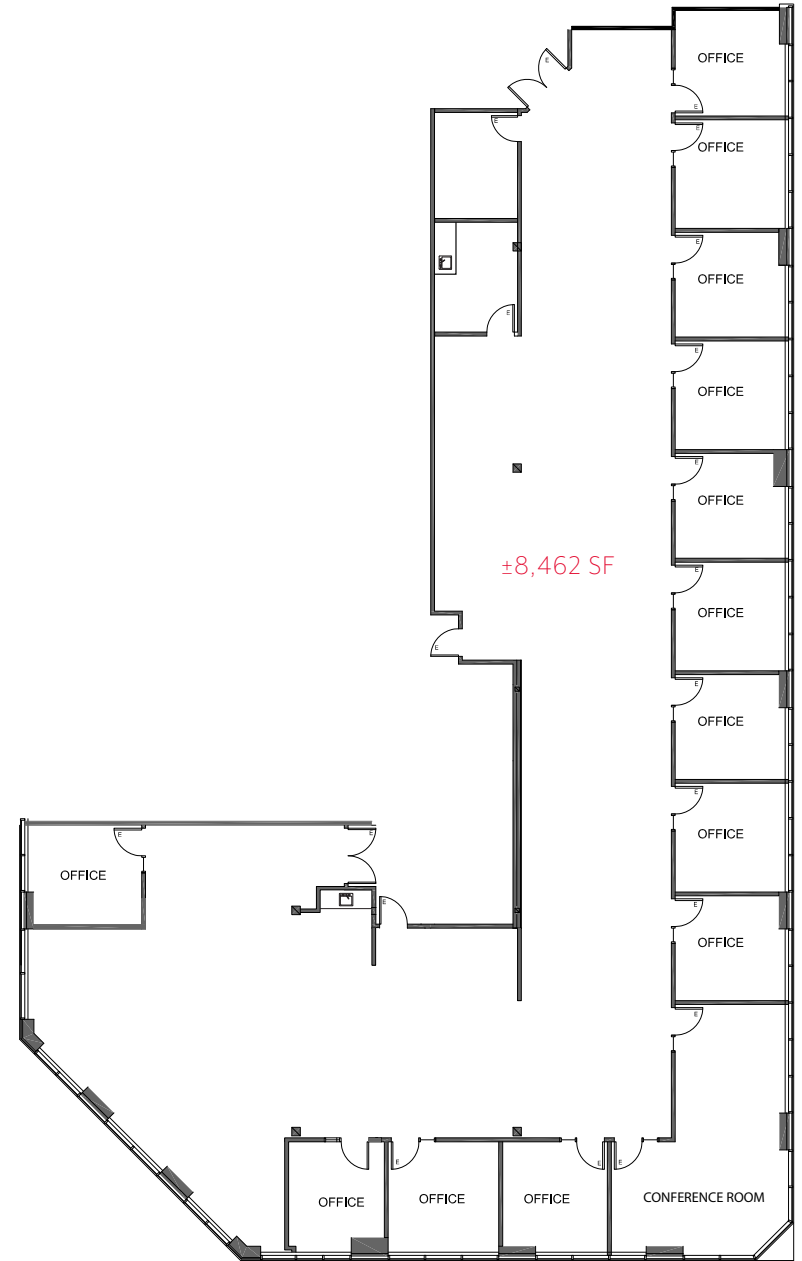
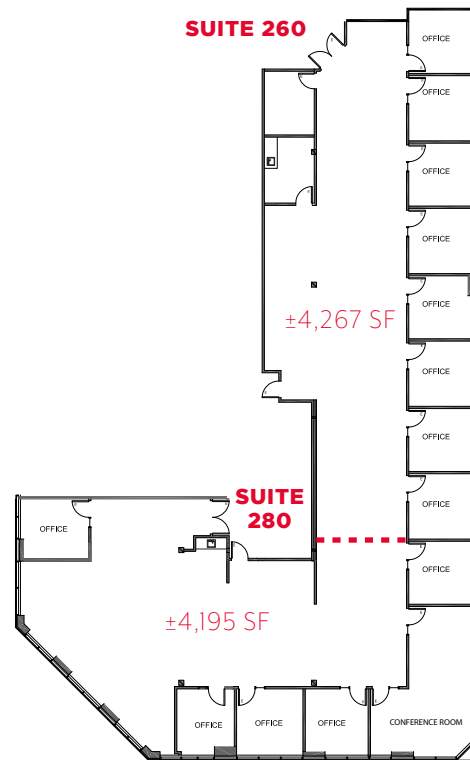
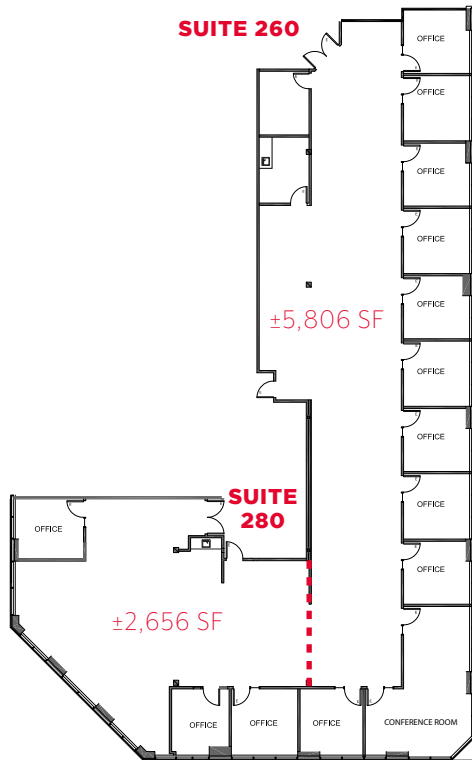
±7,609 SF



FREMONT OFFICE CENTER

2201 WALNUT AVENUE SUITE 260 (DIVISIBLE)

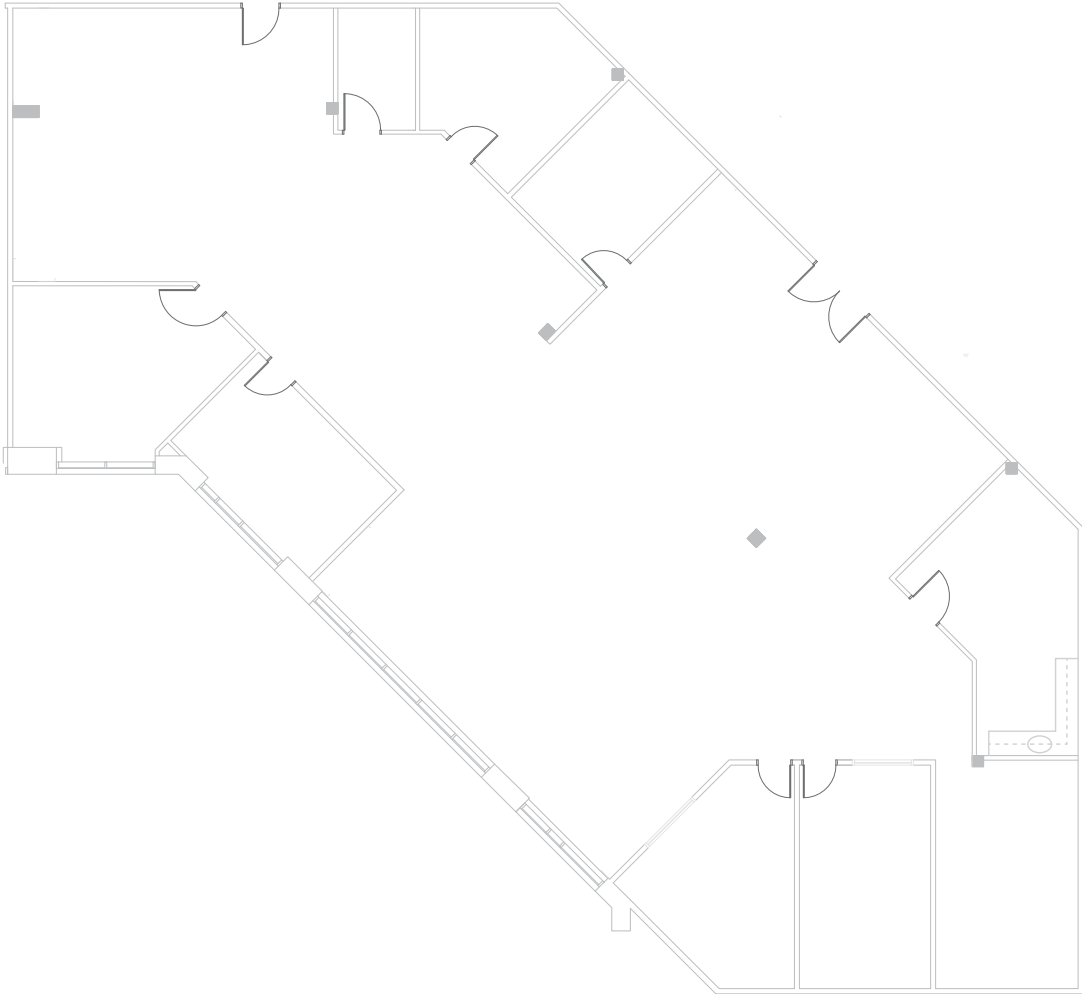
±8,462 SF



FREMONT OFFICE CENTER

39300 CIVIC CENTER DRIVE
SUITE 200

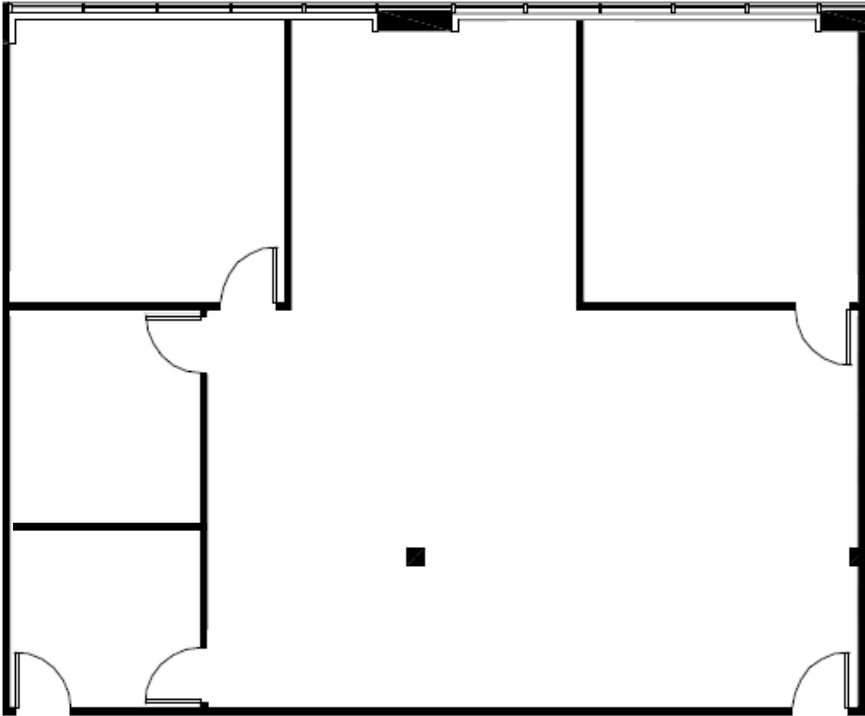
±5,503 SF



FREMONT OFFICE CENTER

39300 CIVIC CENTER DRIVE
SUITE 220

±2,121 SF





CONTACTS

SCOTT DEVER

Managing Director

+1 408 615 3457

scott.dever@cushwake.com

LIC. 01890552

WALT STEPHENSON

Managing Director

+1 408 615 3458

walt.stephenson@cushwake.com

LIC. 01793438

