

FOR SALE

Moose Lodge

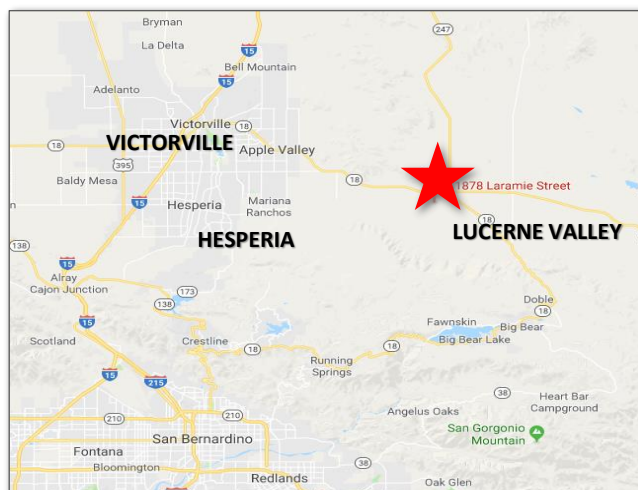


31878 Laramie Rd – Lucerne Valley, CA

ASKING PRICE: \$465,000

Property Information

- ± 6,120 SF Building
- Fully Operating Commercial Kitchen w/ Full Bar
- Situated on 5 Acres of Land
- New Well
- Bar, Dance Floor, Interior & Exterior Bathrooms.
- Conference Room, Two Offices & Janitorial Room
- Full Walk In Cooler
- Zoned: Commercial
- APN: 0451-151-24



Bob Basen

760-684-8071

Bob.Basen@CBCinland.com
CA BRE: 00521368

Jerrad Schendel

760-684-8097

Jerrad.Schendel@CBCinland.com
CA BRE: 01971338

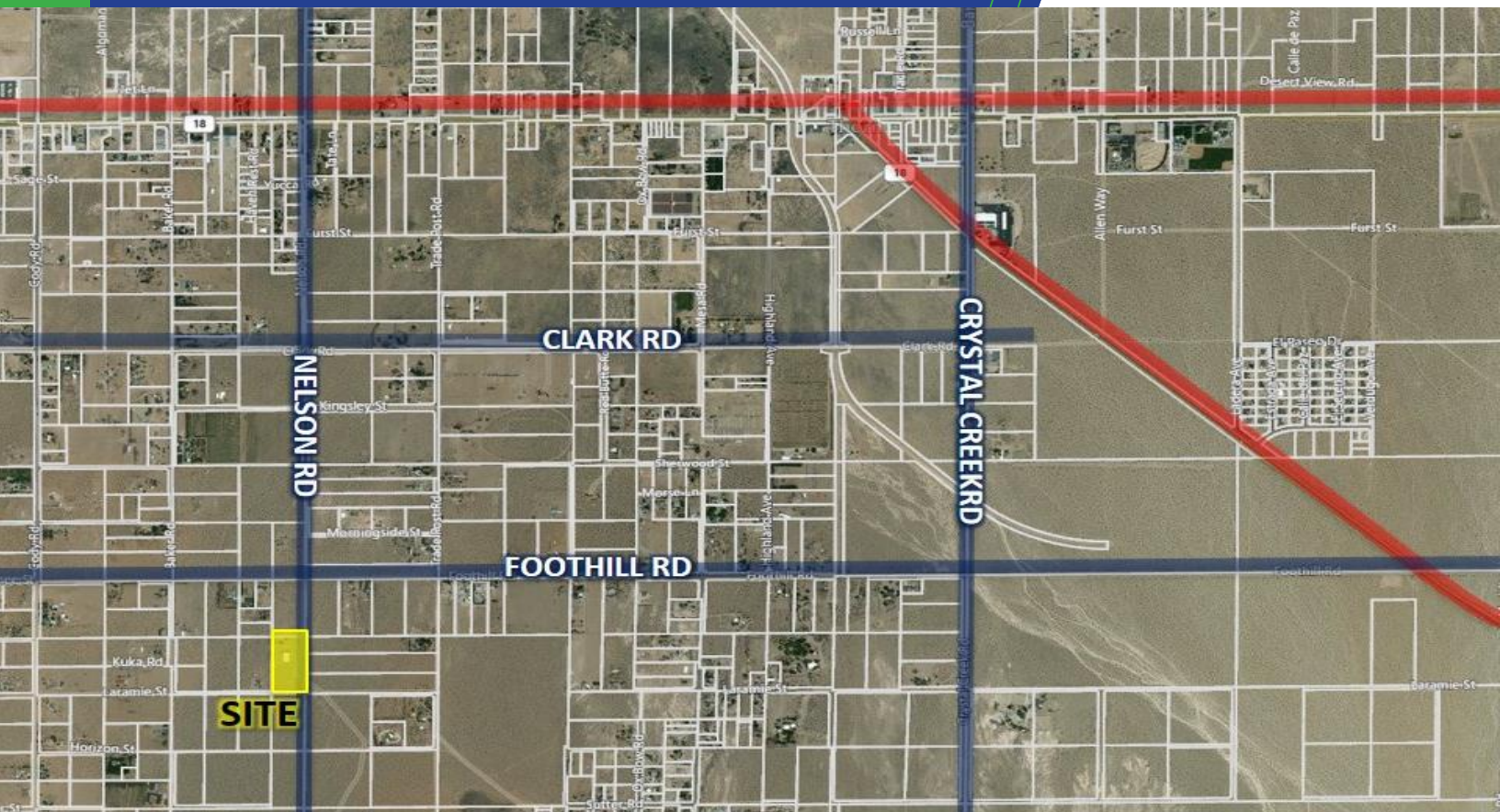
CBCWORLDDESERT.COM

©2017 Coldwell Banker Real Estate LLC, dba Coldwell Banker Commercial Affiliates. All Rights Reserved. Coldwell Banker Real Estate LLC, dba Coldwell Banker Commercial Affiliates fully supports the principles of the Equal Opportunity Act. Each Office is Independently Owned and Operated. Coldwell Banker Commercial and the Coldwell Banker Commercial Logo are registered service marks owned by Coldwell Banker Real Estate LLC, dba Coldwell Banker Commercial Affiliates.

Coldwell Banker Commercial
Real Estate Solutions
15500 W Sand St, 2nd Floor,
Victorville, CA 92392
760-684-8000

FOR SALE

Moose Lodge



CBCWORLDDESERT.COM

©2017 Coldwell Banker Real Estate LLC, dba Coldwell Banker Commercial Affiliates. All Rights Reserved. Coldwell Banker Real Estate LLC, dba Coldwell Banker Commercial Affiliates fully supports the principles of the Equal Opportunity Act. Each Office is Independently Owned and Operated. Coldwell Banker Commercial and the Coldwell Banker Commercial Logo are registered service marks owned by Coldwell Banker Real Estate LLC, dba Coldwell Banker Commercial Affiliates.

Coldwell Banker Commercial
Real Estate Solutions
15500 W Sand St, 2nd Floor,
Victorville, CA 92392
760-684-8000