



## 741 West Cypress Street

Kennett Square, Pennsylvania 19348

### Property Features

- Free Standing Office Building
- Large Open Area
- 5 Private Offices
- Kitchenette
- Conference Room



For more information:

**Jim O'Hara, Jr.**

302 322 9500 • C: 302 584 1632 • [jimohara@emoryhill.com](mailto:jimohara@emoryhill.com)

# For Lease Retail



## Property Summary

Available SF: 3,658 SF

Lease Rate: \$95,000 NNN

Lot Size: 1.86 Acres

Building Size: 3,658 SF

Year Built: 2000

## Property Overview

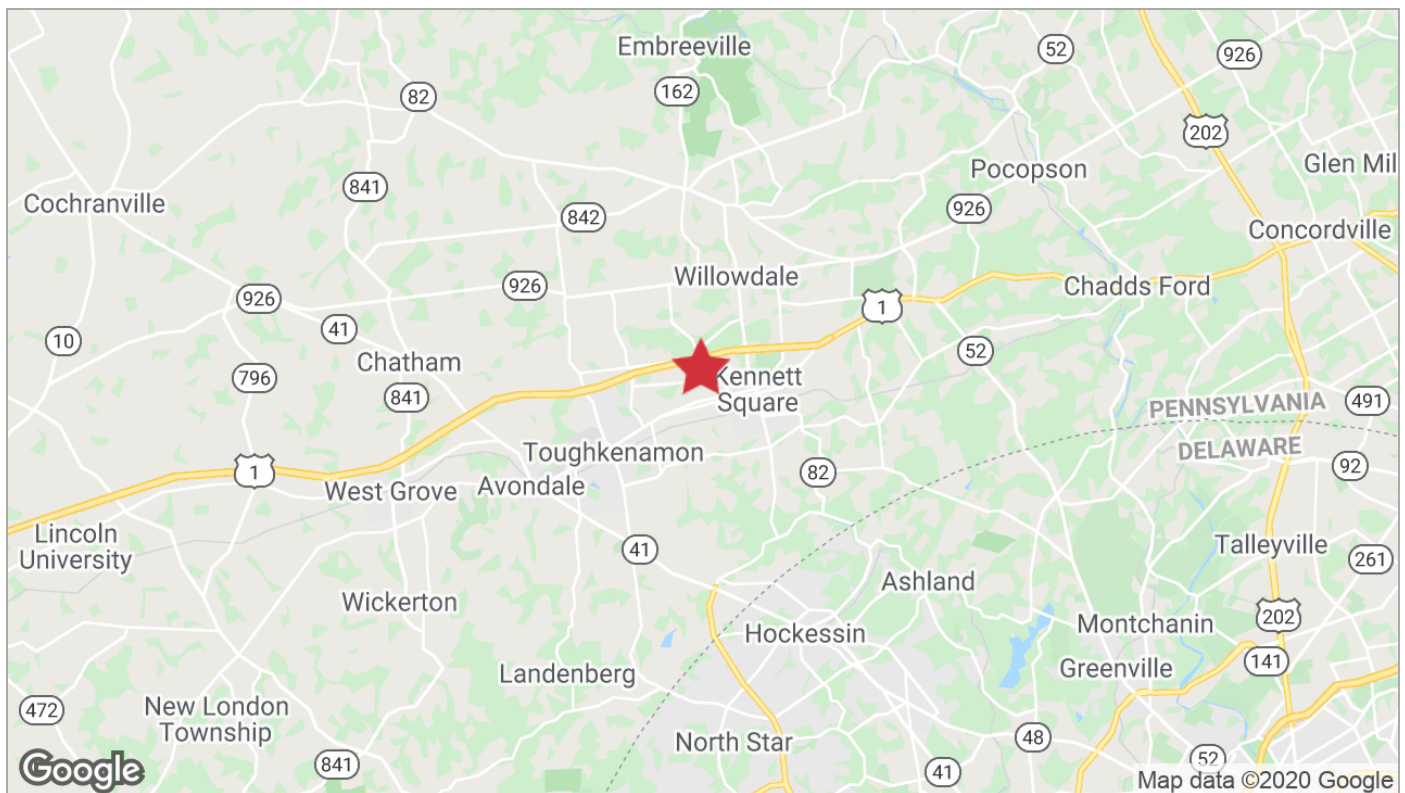
Former Bank Branch in the Heart of Downtown Kennett Square

## Location Overview

Located in the center island and at the Intersection of Cypress Street and Scarlet Road. Access is available from both Baltimore Pike and Cypress Street. Private Parking Lot consisting of 44 Parking Spaces. Building has an existing Drive Thru that could be converted into additional office space.



# For Lease Retail

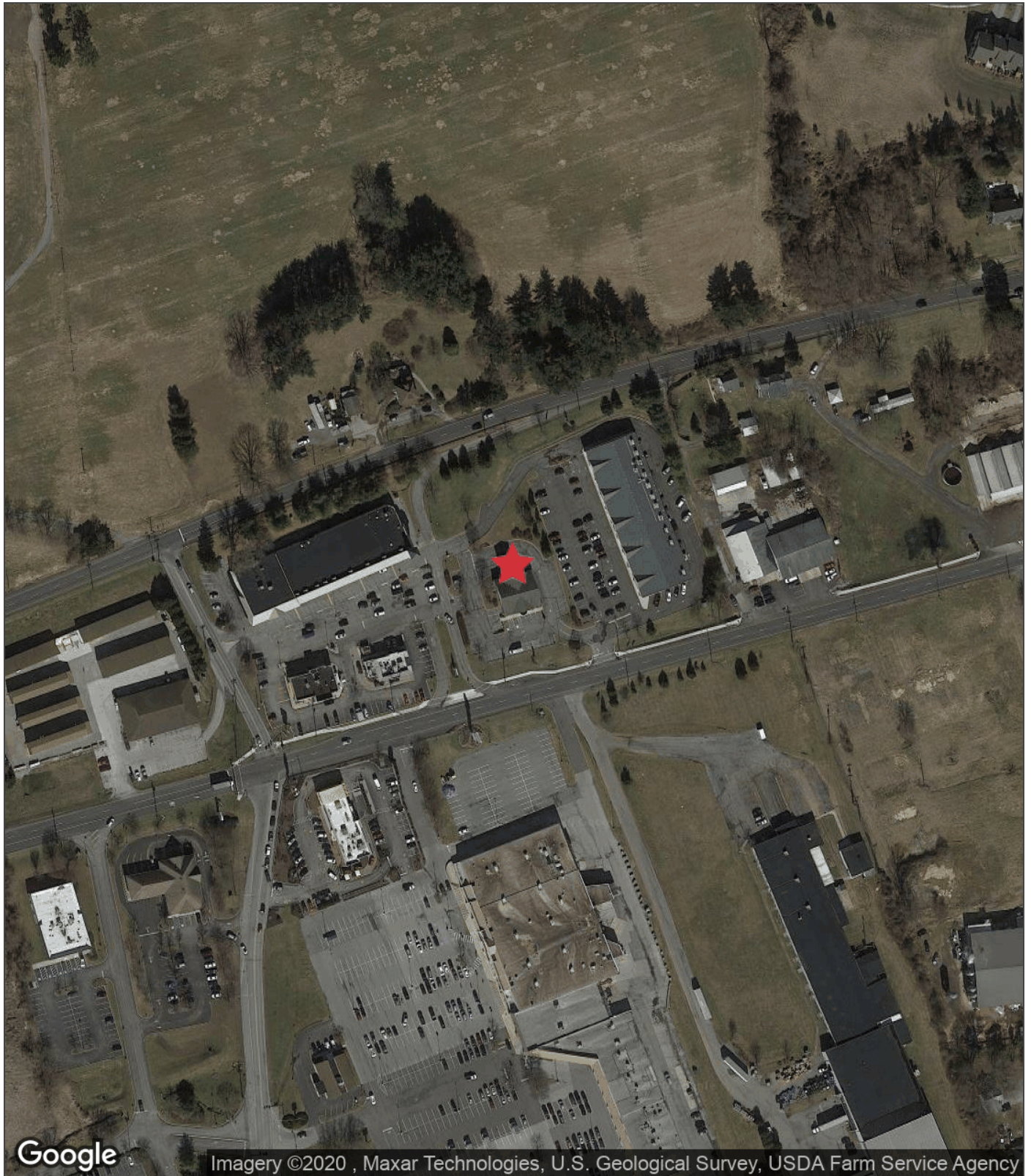


For Lease  
Retail





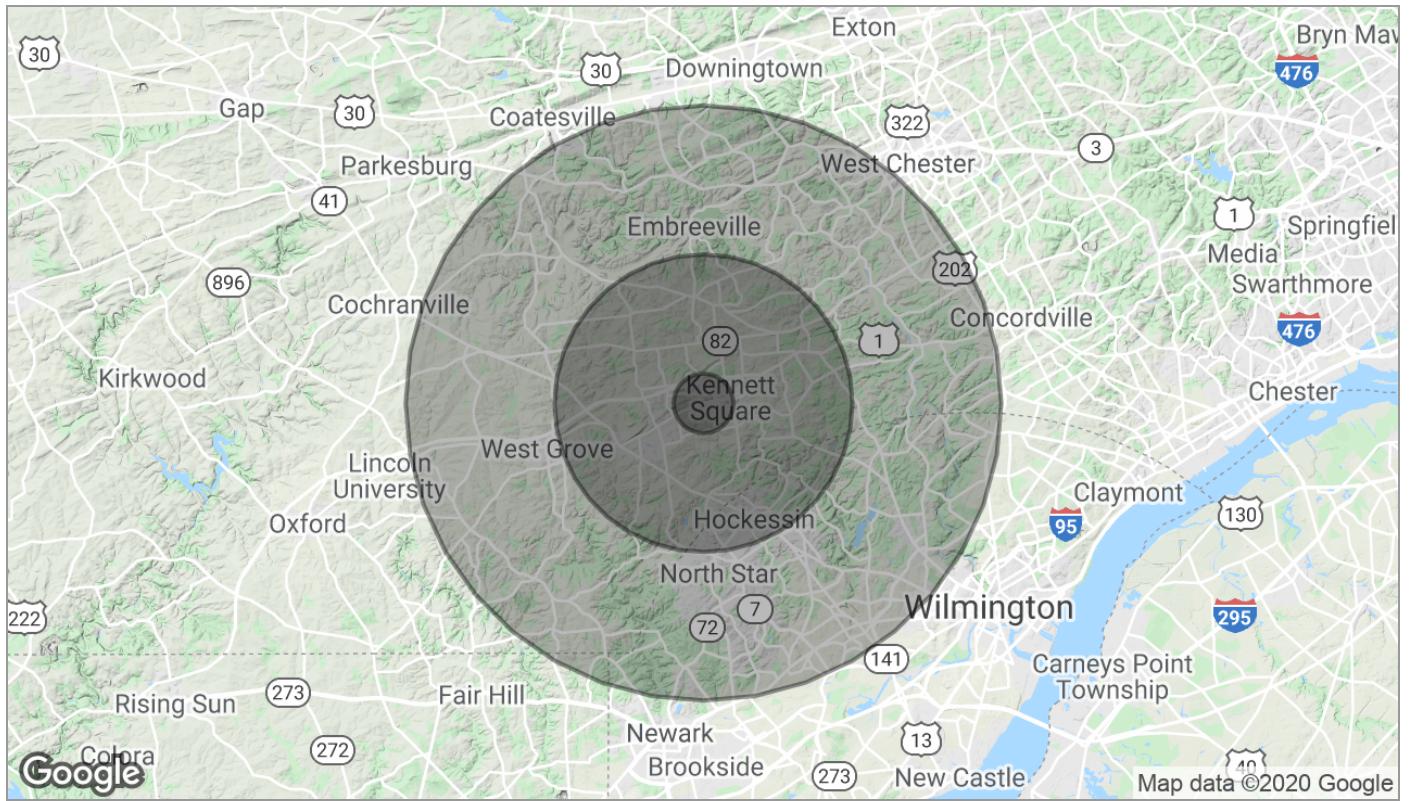
For Lease  
Retail



Imagery ©2020 , Maxar Technologies, U.S. Geological Survey, USDA Farm Service Agency



# For Lease Retail



Population	1 Mile	5 Miles	10 Miles
TOTAL POPULATION	3,160	47,753	216,714
MEDIAN AGE	34.7	39.9	40.2
MEDIAN AGE (MALE)	34.1	39.0	39.5
MEDIAN AGE (FEMALE)	35.0	40.9	41.4
Households & Income	1 Mile	5 Miles	10 Miles
TOTAL HOUSEHOLDS	996	16,192	77,493
# OF PERSONS PER HH	3.2	2.9	2.8
AVERAGE HH INCOME	\$100,457	\$138,127	\$124,411
AVERAGE HOUSE VALUE	\$380,794	\$457,605	\$415,865
Race	1 Mile	5 Miles	10 Miles
% WHITE	83.2%	88.4%	88.2%
% BLACK	3.7%	2.6%	4.2%
% ASIAN	2.8%	4.2%	4.6%
% HAWAIIAN	0.0%	0.0%	0.1%
% INDIAN	0.2%	0.0%	0.1%
% OTHER	6.1%	2.8%	1.2%
Ethnicity	1 Mile	5 Miles	10 Miles
% HISPANIC	40.9%	17.2%	8.6%

\* Demographic data derived from 2010 US Census