

28803 - 28815 EIGHT MILE
LIVONIA, MICHIGAN

OFFICE FOR SALE OR LEASE
2,150 - 7,610 Square Feet Available



**SIGNATURE
ASSOCIATES**
KNOW SIGNATURE | KNOW RESULTS

MAPLE WOOD OFFICE



PROPERTY FEATURES

- Up to 7,610 square feet available
- Great user / investor opportunity
- Completely renovated exterior
- 17,390 square foot 3-building multi-tenant office / medical complex
- High visibility monument signage on Eight Mile Road
- Ample parking
- Lease Rate: Inquire
- Sale Price: Inquire



For more information, please contact:

JASON STOUGH
(248) 948 4180

jstough@signatureassociates.com

JOE HAMWAY
(248) 948 0113

jhamway@signatureassociates.com

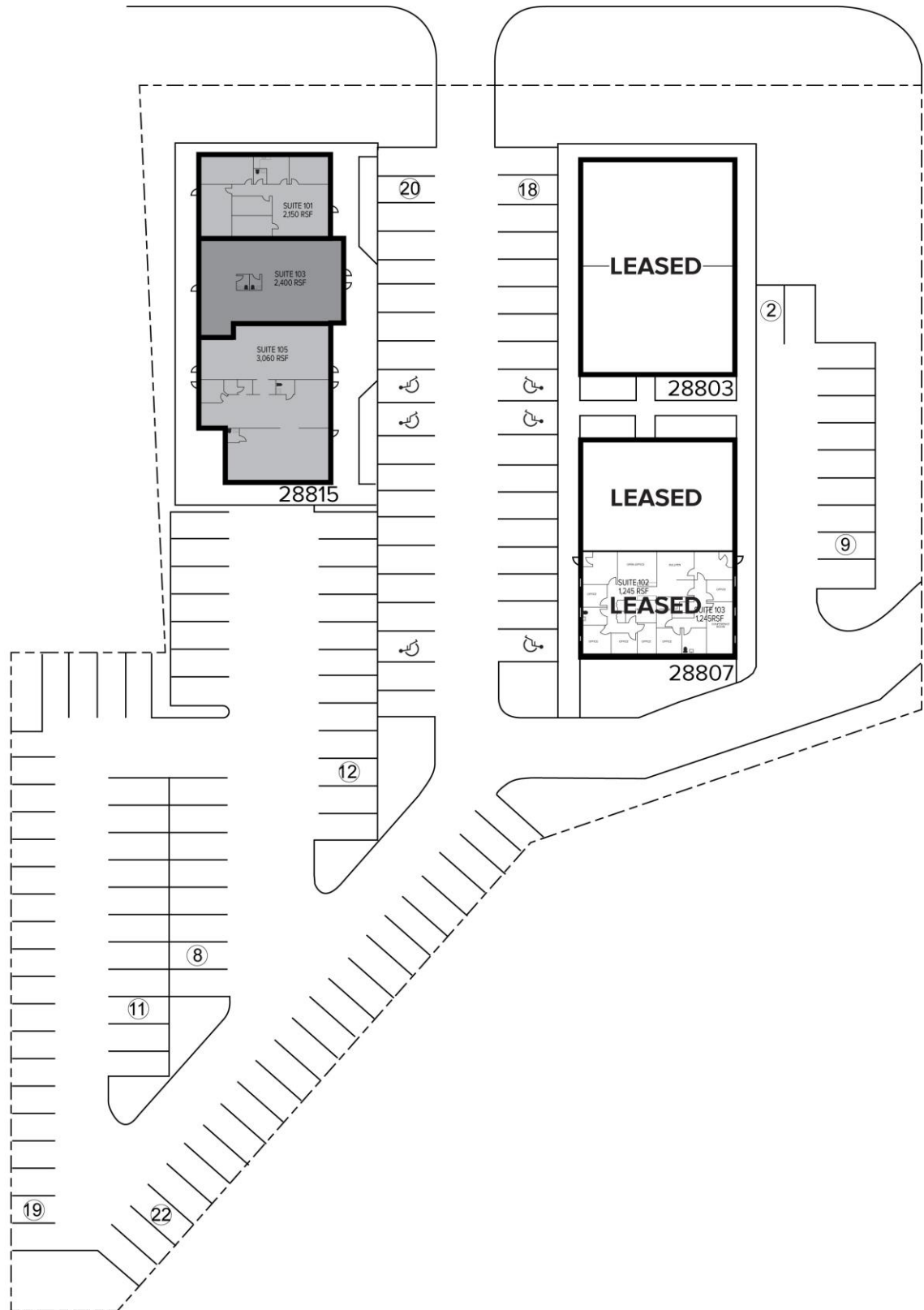
SIGNATURE ASSOCIATES
One Towne Square, Suite 1200
Southfield, MI 48076
www.signatureassociates.com

28803-28815 Eight Mile Road - Livonia, Michigan

Office For Sale or Lease

2,150 – 7,610
Square Feet
AVAILABLE

Site Plan



For more information, please contact:

JASON STOUGH

(248) 948 4180

jstough@signatureassociates.com

JOE HAMWAY

(248) 948 0113

jhamway@signatureassociates.com

SIGNATURE ASSOCIATES

One Towne Square, Suite 1200

Southfield, MI 48076

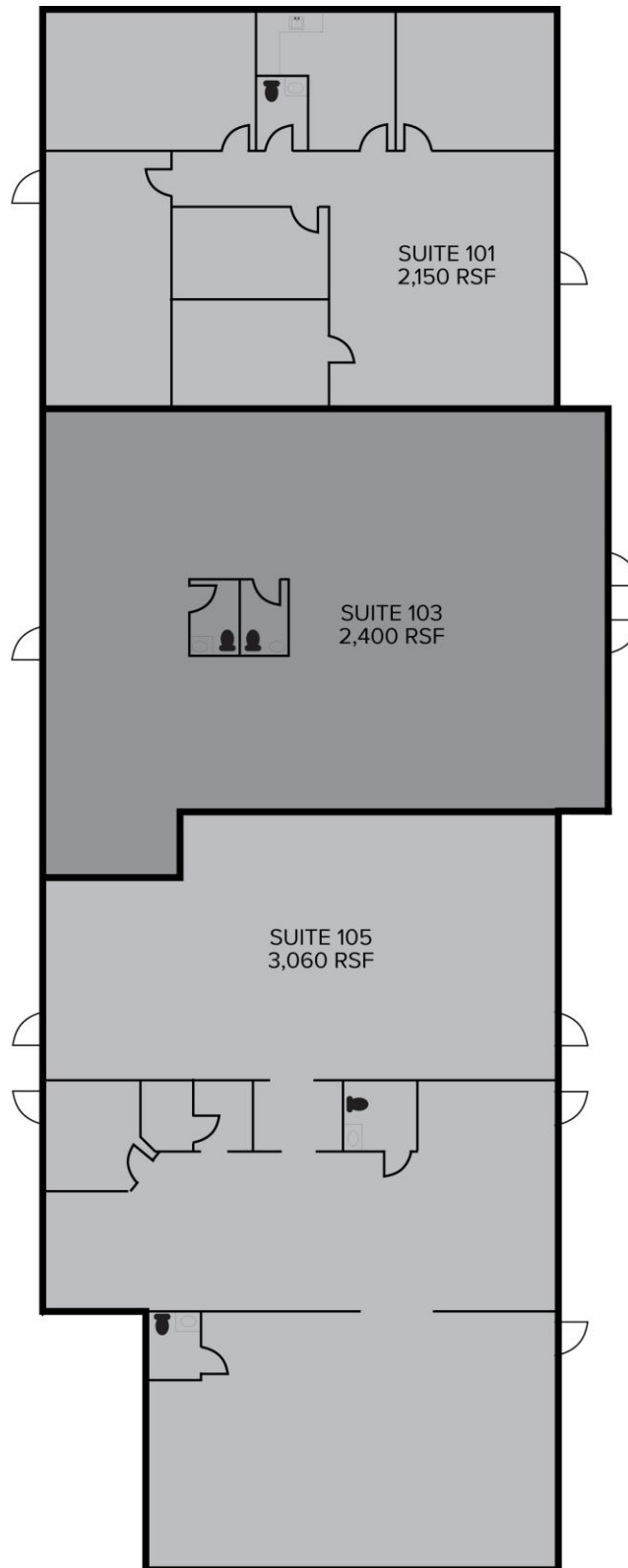
www.signatureassociates.com

28803-28815 Eight Mile Road - Livonia, Michigan

Office For Sale or Lease

2,150 – 7,610
Square Feet
AVAILABLE

Floor Plan
28815 Building



For more information, please contact:

JASON STOUGH

(248) 948 4180

jstough@signatureassociates.com

JOE HAMWAY

(248) 948 0113

jhamway@signatureassociates.com

SIGNATURE ASSOCIATES

One Towne Square, Suite 1200

Southfield, MI 48076

www.signatureassociates.com