

West Valley at 216 Building D

6651 South 216th Street
Kent, WA

West Valley Exposure!

13,599 SF total

3,177 SF office

20' clear height

1 dock-high doors
2 grade-level doors

Sprinklered

\$0.55 shell / \$0.85 office

Great image space in nice
professional industrial park



Location



Contact

Matt Wood, SIOR

206.248.7306

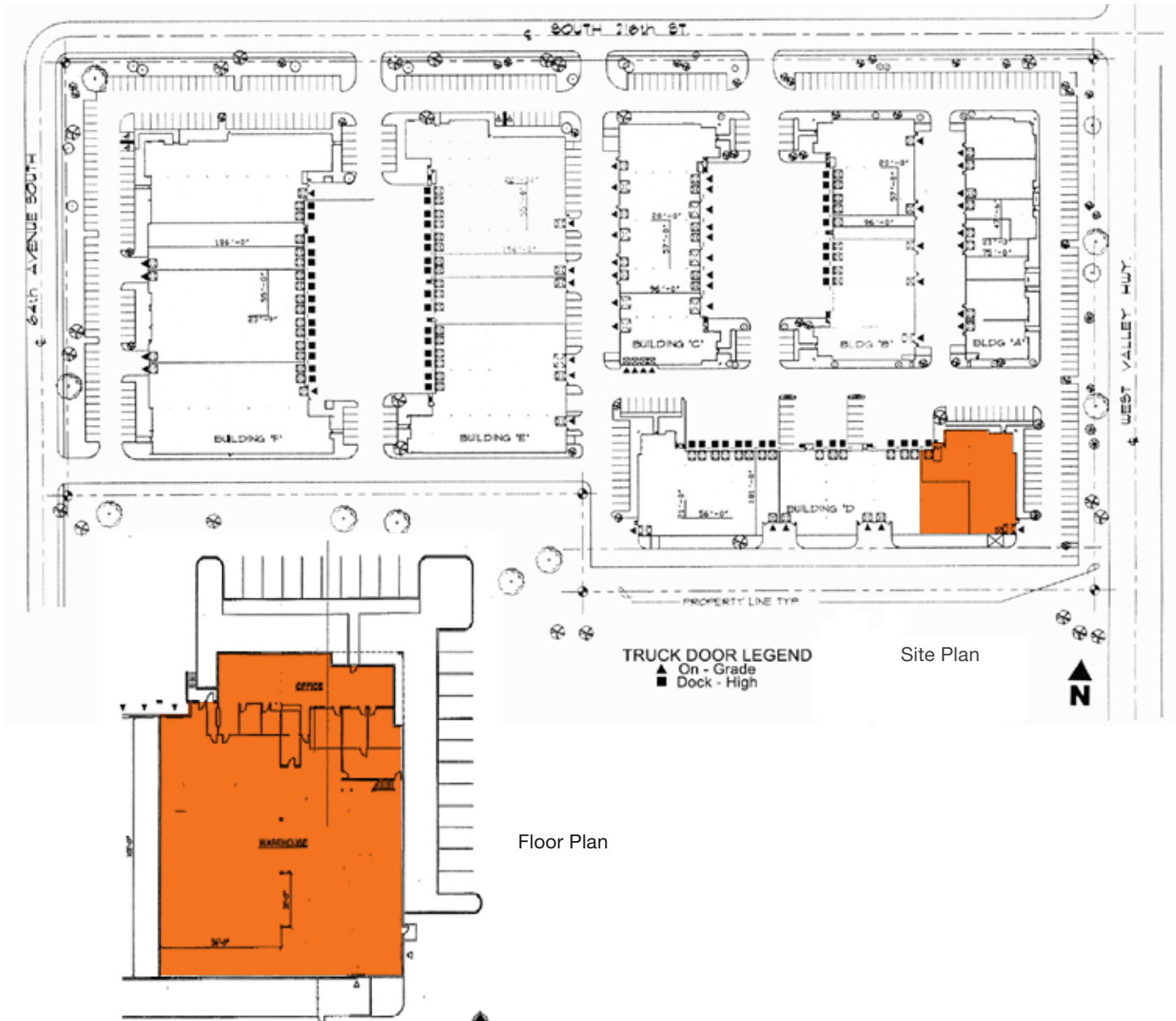
mwood@kiddermathews.com

Mike Newton

206.248.7311

mnewton@kiddermathews.com

West Valley at 216



Contact

Matt Wood, SIOR
206.248.7306
mwood@kiddermathews.com

Mike Newton
206.248.7311
mnewton@kiddermathews.com