

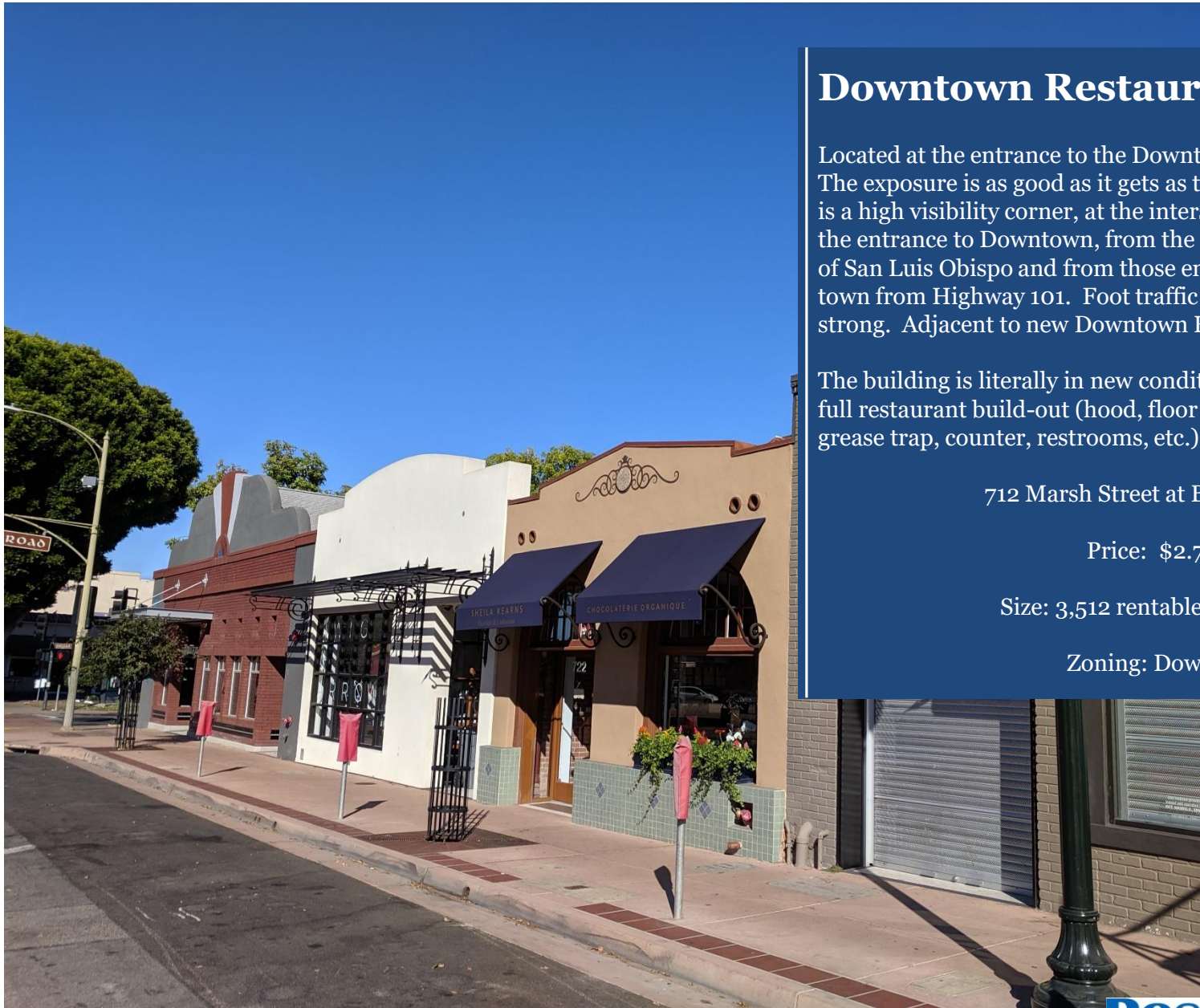
For Lease
Prime, Built Out Restaurant Space
3,512 SF – Downtown San Luis Obispo
San Luis Obispo, California



John Rossetti
805.544.3900 office
john@rossetticompany.com
BRE Lic. #00524464



ROSSETTI
COMPANY
COMMERCIAL REAL ESTATE



Downtown Restaurant

Located at the entrance to the Downtown core. The exposure is as good as it gets as the location is a high visibility corner, at the intersection of the entrance to Downtown, from the south end of San Luis Obispo and from those entering town from Highway 101. Foot traffic is also strong. Adjacent to new Downtown Hotel Cerra.

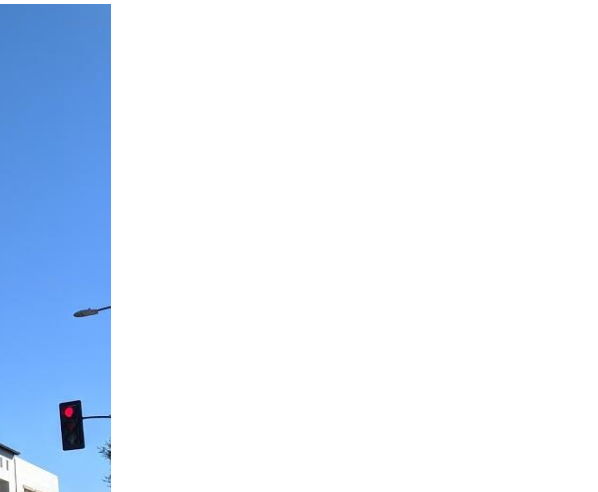
The building is literally in new condition with a full restaurant build-out (hood, floor sinks, grease trap, counter, restrooms, etc.)

712 Marsh Street at Broad Street

Price: \$2.75/SF, NNN

Size: 3,512 rentable square feet

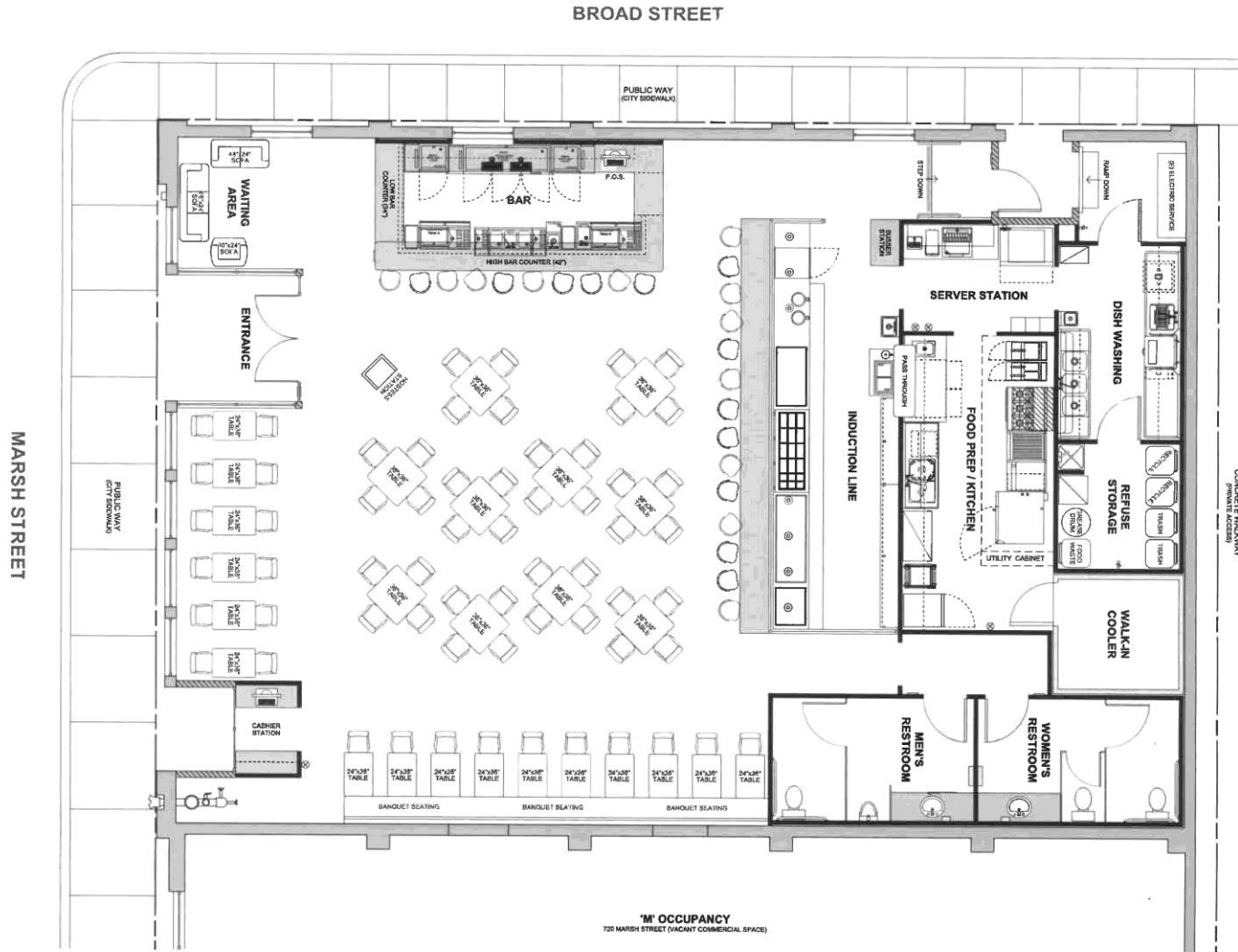
Zoning: Downtown Core



John Rossetti
Office | Industrial | NNN

ROSSETTI
COMPANY
COMMERCIAL REAL ESTATE

Floor Plan

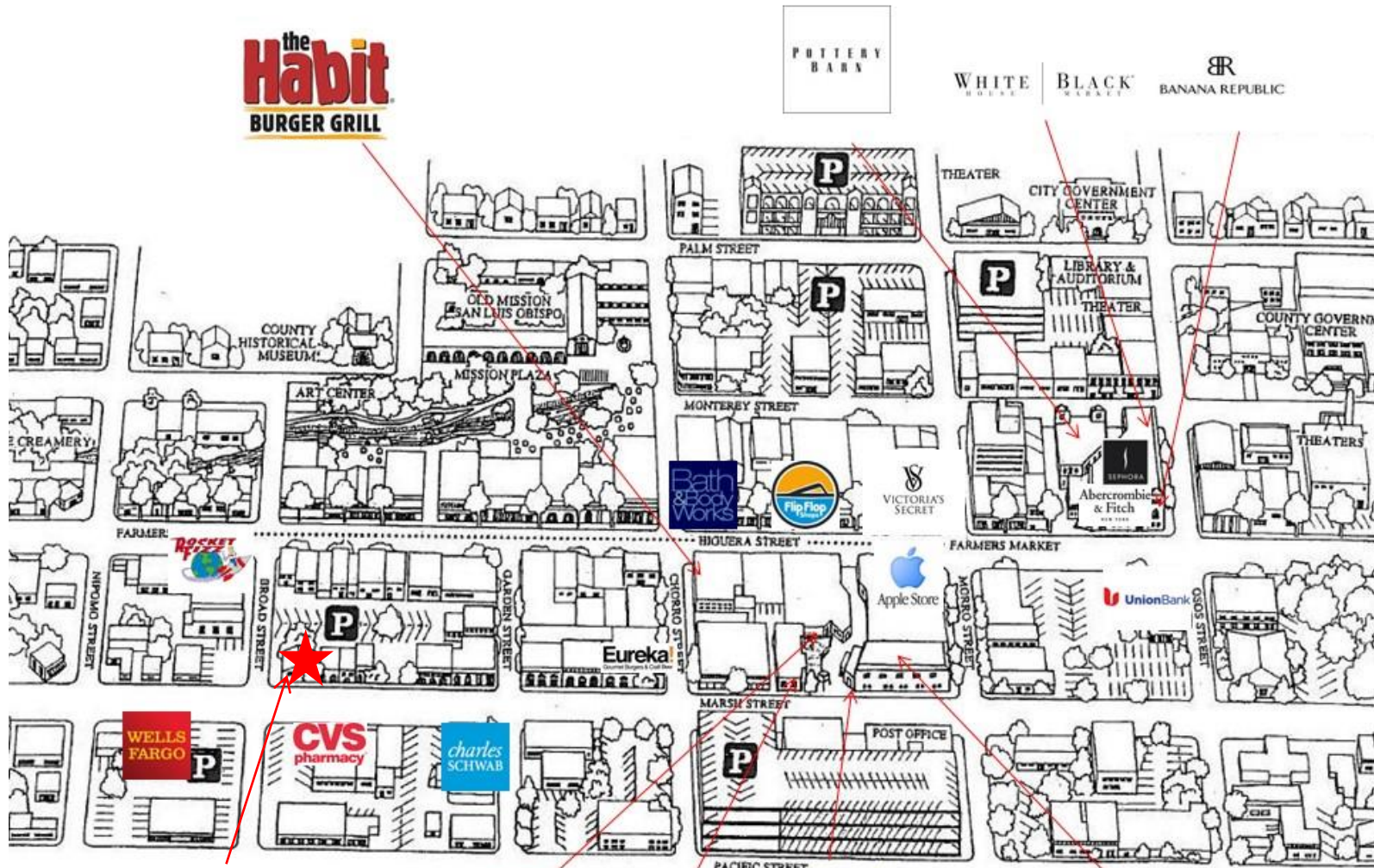


John Rossetti
Office | Industrial | NNN

ROSSETTI
COMPANY
COMMERCIAL REAL ESTATE

Information contained herein has been obtained from the owner of the property or from other sources deemed reliable. We have no reason to doubt its accuracy, but we do not guarantee it.

Downtown Map

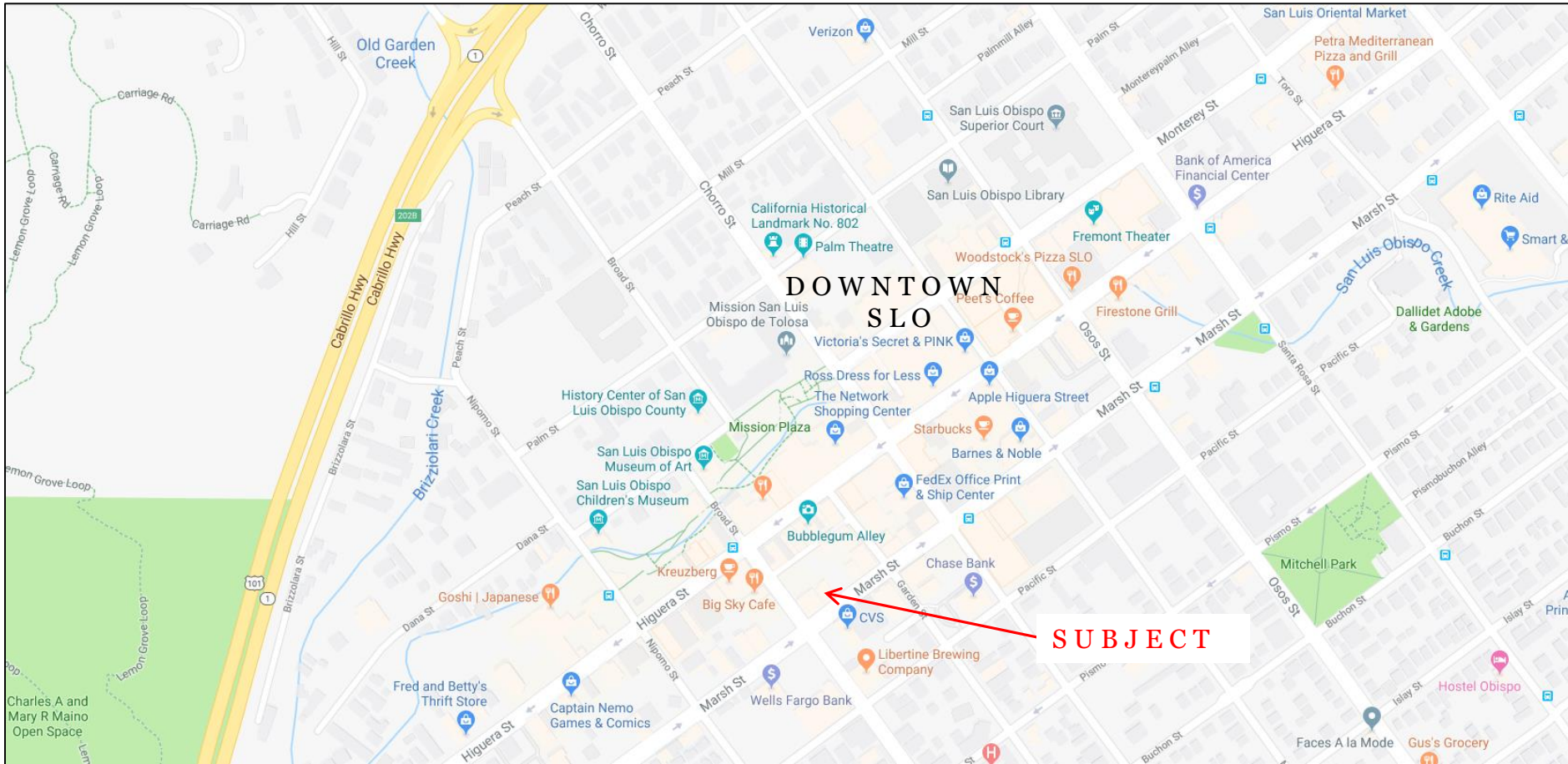


**Subject
Property**

John Rossetti
Office | Industrial | NNN

**ROSSETTI
COMPANY**
COMMERCIAL REAL ESTATE

Location



John Rossetti
Office | Industrial | NNN

Information contained herein has been obtained from the owner of the property or from other sources deemed reliable. We have no reason to doubt its accuracy, but we do not guarantee it.

ROSSETTI
COMPANY
COMMERCIAL REAL ESTATE