

For Lease

10,000 SF Office Space (Divisible to 3,000 SF)

1800 Maxwell Road, Chula Vista



Tracy Charles Clark
Senior Vice President
858.458.3339
tclark@voitco.com
Lic. #00641800

Kimberly Channele Clark, J.D.
Associate
858.458.3343
kclark@voitco.com
Lic. #01439305

The information contained herein has been obtained from sources we deem reliable. While we have no reason to doubt its accuracy, we do not guarantee it.
©2012 Voit Real Estate Services, Inc. All Rights Reserved. Real Solutions® is a registered trademark of Voit Real Estate Services.



Voit
REAL ESTATE SERVICES

For Lease

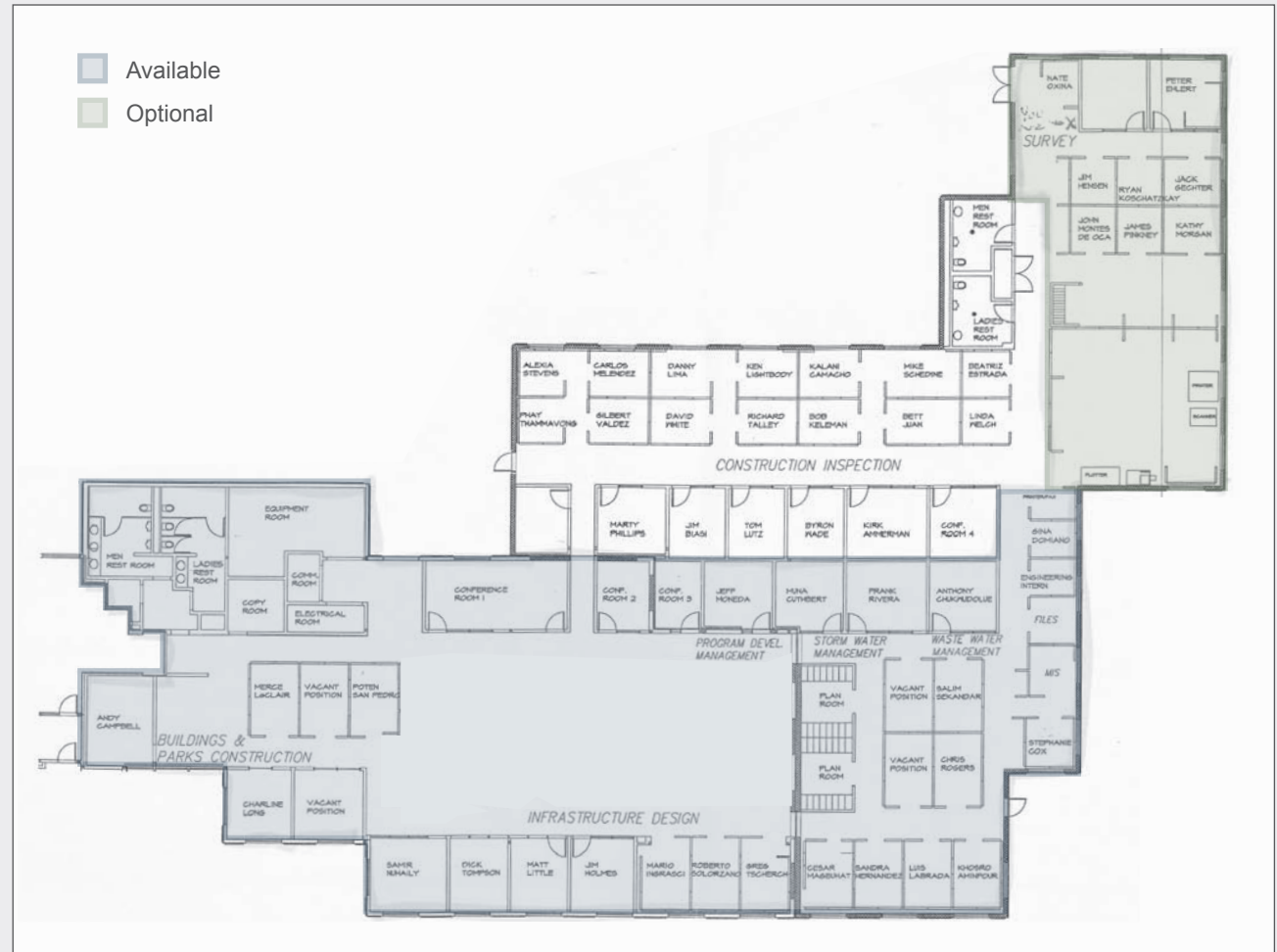
10,000 SF Office Space (Divisible to 3,000 SF)

1800 Maxwell Road, Chula Vista

Property Details

- Great office layout, possibility for system furniture with perimeter private offices
- Ideal for office headquarters, charter schools, and daycare centers.
- Outdoor patio with landscaping and campus-like atmosphere
- Prominent entry with open lobby area
- Abundant secured parking
- Visitor parking with roundabout drop-off access

Floor Plan



Tracy Charles Clark
Senior Vice President
858.458.3339
tclark@voitco.com
Lic. #00641800

Kimberly Channele Clark, J.D.
Associate
858.458.3343
kclark@voitco.com
Lic. #01439305



Voit
REAL ESTATE SERVICES

For Lease

10,000 SF Office Space (Divisible to 3,000 SF)

1800 Maxwell Road, Chula Vista



Tracy Charles Clark
Senior Vice President
858.458.3339
tclark@voitco.com
Lic. #00641800

Kimberly Channele Clark, J.D.
Associate
858.458.3343
kclark@voitco.com
Lic. #01439305

The information contained herein has been obtained from sources we deem reliable. While we have no reason to doubt its accuracy, we do not guarantee it.
©2012 Voit Real Estate Services, Inc. All Rights Reserved. Real People. Real Solutions.™ is a registered trademark of Voit Real Estate Services.



Voit

REAL ESTATE SERVICES