

# Winter Park Retail For Lease



## New England Retail Space

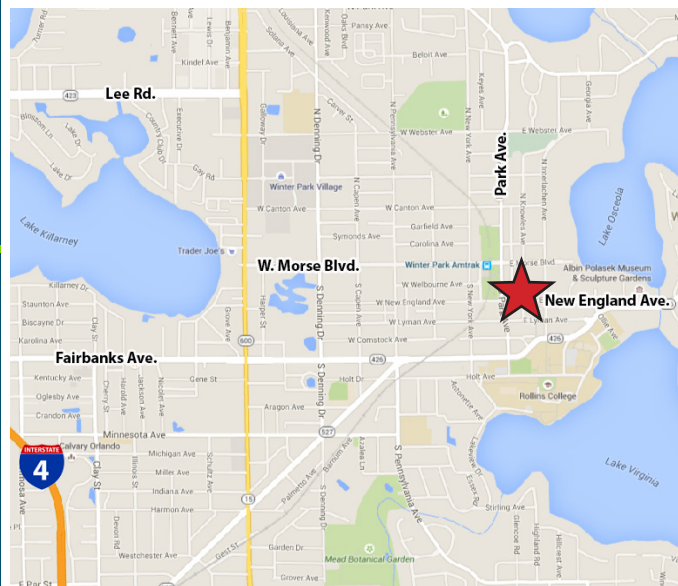
155 E. New England Ave., Suite 101 | Winter Park

- 2,620 SF available in Winter Park Retail/Office Building
- Excellent visibility, situated at the Northwest corner of New England Avenue and Knowles Avenue, one block east of Park Avenue
- Located in the heart of downtown Winter Park adjacent to the Bank of America Building/Parking Garage that fronts Park and New England Avenue
- One block east of the unique and charming Park Avenue with plenty of shopping, restaurants, amenities and the beautiful Alford Hotel, all within walking distance.
- Asking \$38.00/SF Gross; 3-5 Year Term

**TROY STEVENS**  
M: 407-617-5505  
T: 407-691-0505  
tstevens@holdthyssen.com

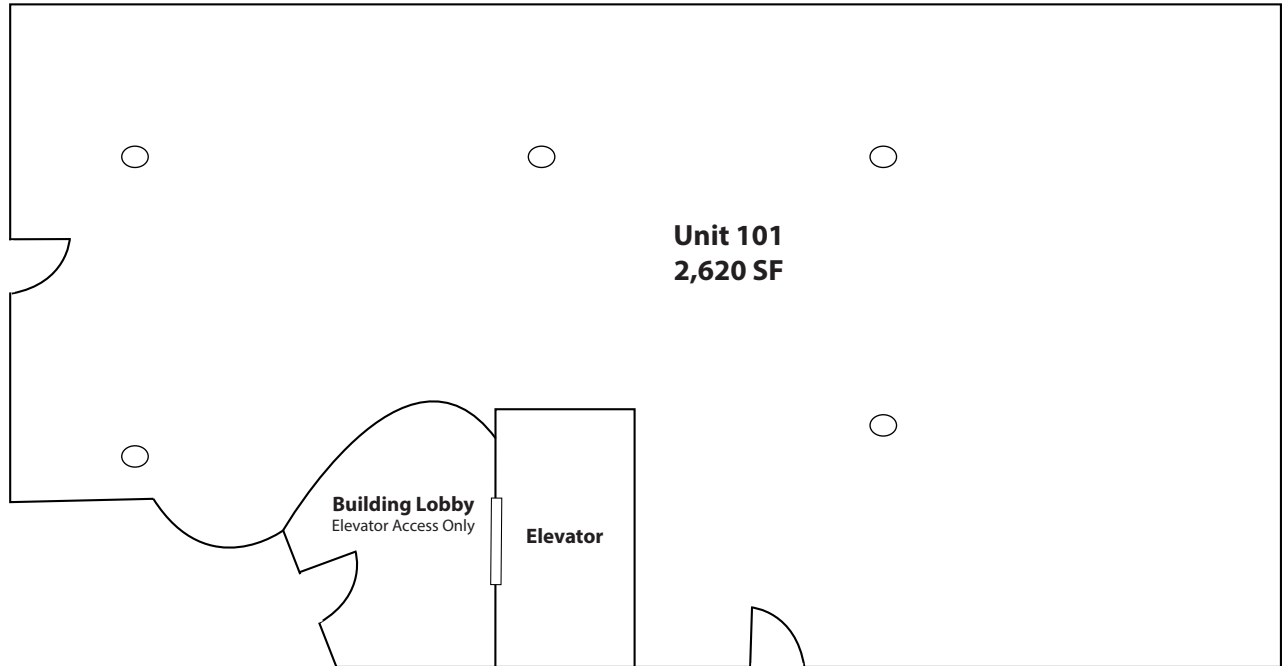
**ALEX ROWLINSON**  
M: 407-619-1756  
T: 407-691-0505  
arowlinson@holdthyssen.com

[www.holdthyssen.com](http://www.holdthyssen.com)

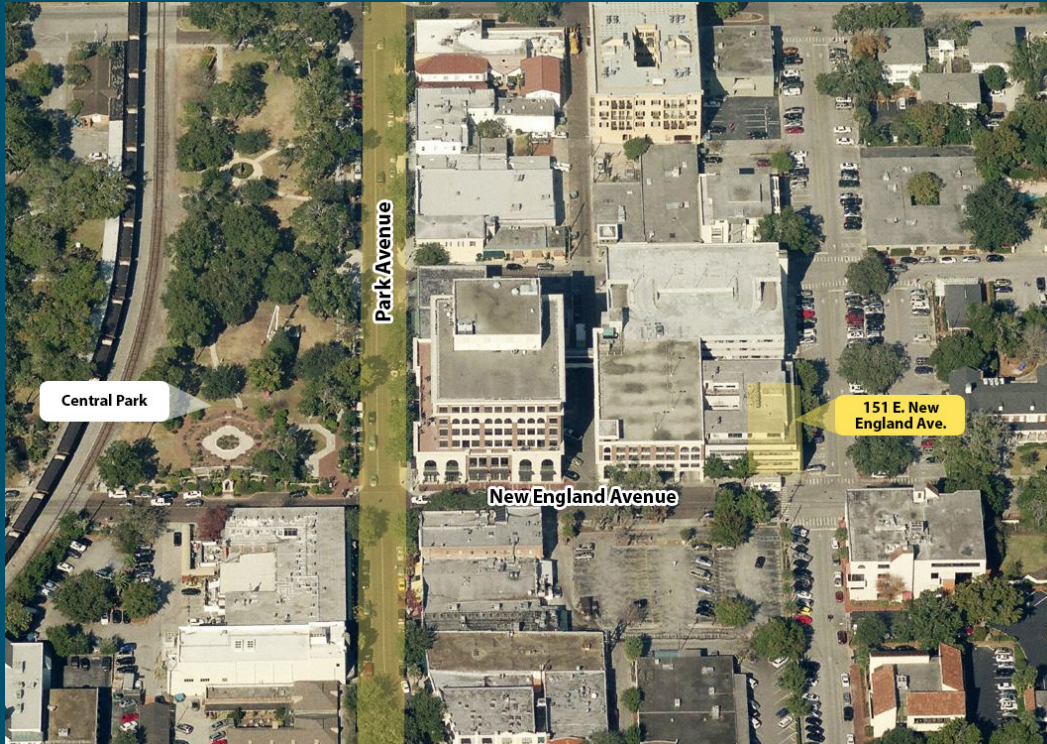




## FLOOR PLAN



## AERIAL



FOR MORE INFORMATION:

**TROY STEVENS**

tstevens@holdthyssen.com

M: 407-617-5505

T: 407-691-0505

**ALEX ROWLINSON**

arowlinson@holdthyssen.com

M: 407-619-1756

T: 407-691-0505

301 S. New York Avenue

Suite 200

Winter Park, FL 32789



The information above has been obtained from sources believed reliable. While we do not doubt its accuracy we make no guarantee, warranty or representation about it. It is your responsibility to independently confirm its accuracy and completeness. Any projections, opinions, assumptions, or estimates used are for example only and do not represent the current or future performance of the property. Hold-Thyssen, Inc. is a licensed real estate broker.

[www.holdthyssen.com](http://www.holdthyssen.com)