

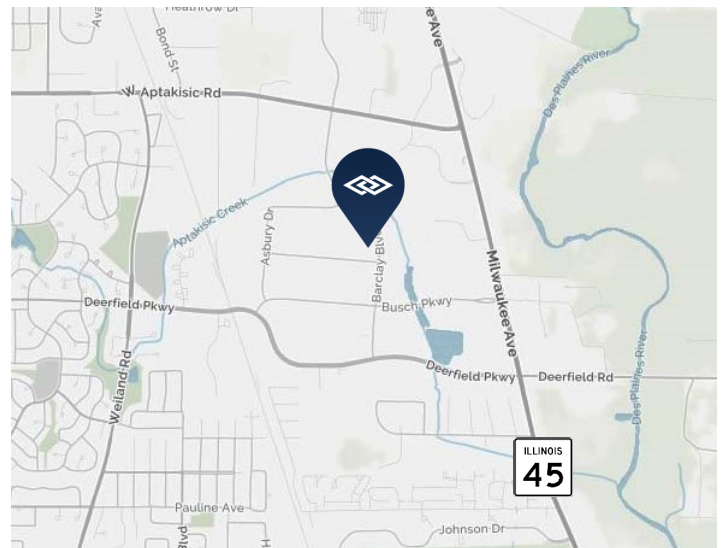
AVAILABLE FOR LEASE

1290-1292 BARCLAY BOULEVARD, BUFFALO GROVE, IL



BUILDING SPECIFICATIONS

BUILDING SIZE:	39,995 SF
AVAILABLE:	5,102 SF
OFFICE:	2,406 SF
POWER:	200 amps; 120/280 volts; 3-phase
LOADING:	2 common docks
PARKING:	Ample
SPRINKLER:	Wet
HEAT:	Gas
LEASE RATE:	\$9.00 psf net
2018 TAX ESTIMATE:	\$1.66 psf



FEATURES

- Well maintained office units with small storage space
- Excellent business park environment
- Newly renovated

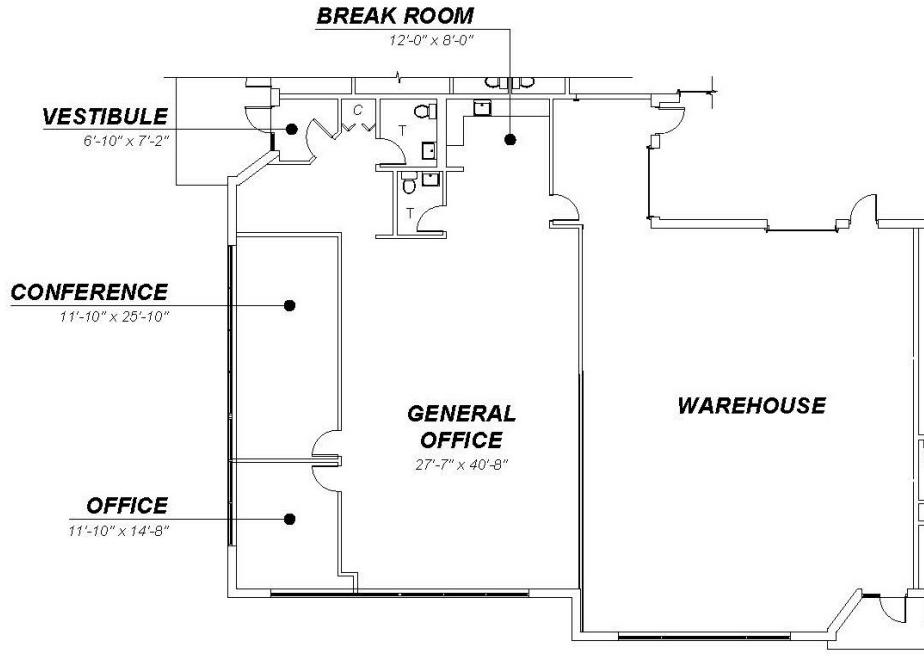
**FOR ADDITIONAL
INFORMATION,
PLEASE CONTACT:**

DAN PRENDERGAST
Associate
dprendergast@darwinrealty.com

ADAM M. HAEFNER
Director of Brokerage Services
ahaefner@darwinrealty.com

AVAILABLE FOR LEASE

1290-1292 BARCLAY BOULEVARD, BUFFALO GROVE, IL



**FOR ADDITIONAL
INFORMATION,
PLEASE CONTACT:**

DAN PRENDERGAST
Associate
dprendergast@darwinrealty.com

ADAM M. HAEFNER
Director of Brokerage Services
ahaefner@darwinrealty.com