

LAND

FOR SALE

\$699,000



**COLDWELL
BANKER
COMMERCIAL**

Paradise



2425 N HARBOR CITY BLVD, MELBOURNE, FL 32935
2425 N HARBOR CITY BLVD | 2.4/AC COMMERCIAL LAND PARCEL

Property Highlights

- Commercial Development or Owner/User Opportunity
- Strategically Located on the Corner of US Hwy 1 & Cliff Creek Dr
- Corner Property - Excellent Visibility - Easy Access
- Vibrant, High Traffic US Hwy 1 Corridor Boast Over 37,000 VPD
- Over 200' of Frontage on US Hwy 1

Offering Summary

Sale Price:	\$699,000
Lot Size:	2.44 Acres
Zoning:	CP - Comm Low/Den

Demographics	1 Mile	5 Miles	10 Miles
Total Households	3,250	25,758	50,612
Total Population	7,335	57,675	115,659
Average HH Income	\$63,060	\$69,439	\$78,489

Keith D. Kite

772.231.9333

FL #BK3172900

keith@kitepropertiesllc.com

Kollin G. Kite

772.633.5640

FL #SL3340957

kollin@kitepropertiesllc.com



WWW.CBCWORLDWIDE.COM / WWW.KITEPROPERTIESLLC.COM

COLDWELL BANKER COMMERCIAL | PARADISE

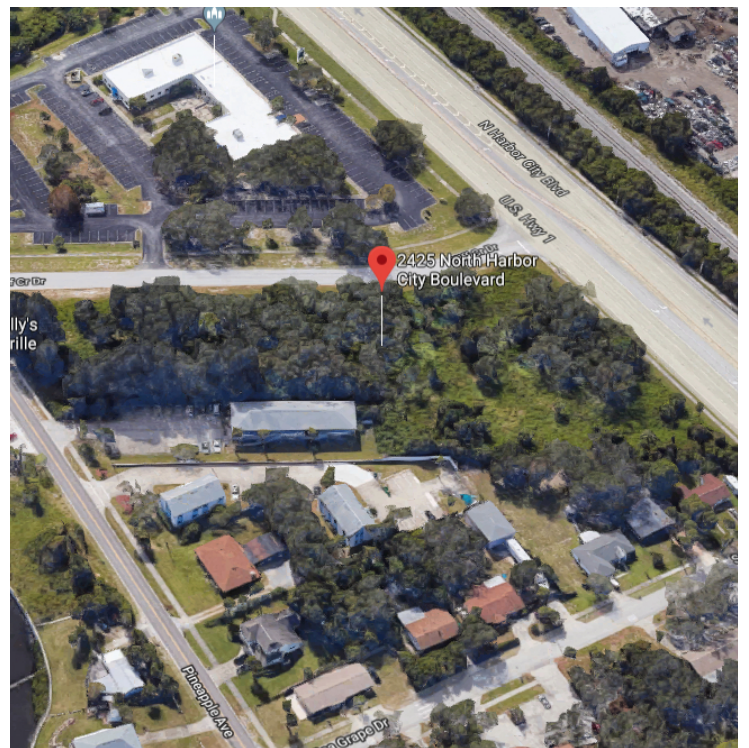
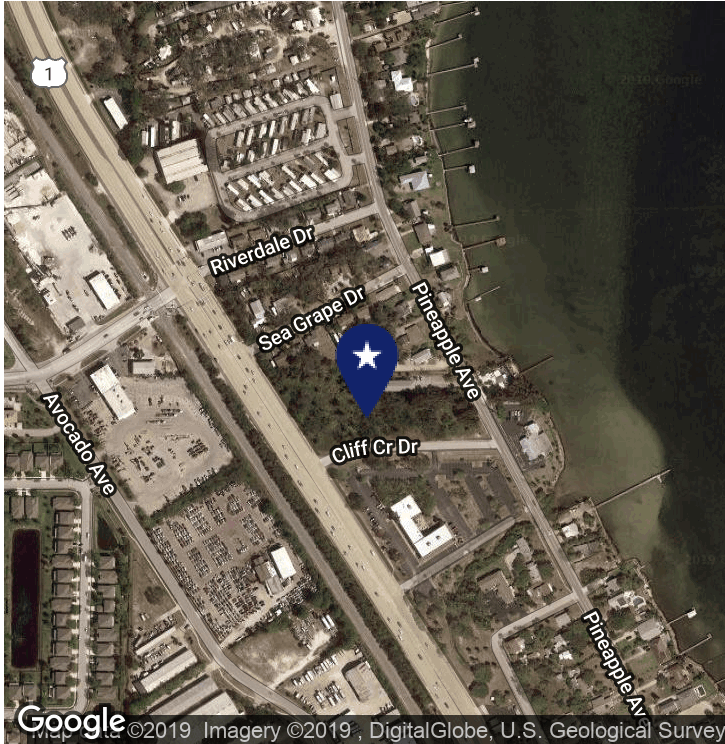
1950 US HIGHWAY 1, VERO BEACH, FL 32960

772-231-9333



2425 N HARBOR CITY BLVD | 2.4/AC COMMERCIAL LAND PARCEL
2425 N Harbor City Blvd, Melbourne, FL 32935

Paradise



Keith D. Kite

772.231.9333

FL #BK3172900

keith@kitepropertiesllc.com

Kollin G. Kite

772.633.5640

FL #SL3340957

kollin@kitepropertiesllc.com

