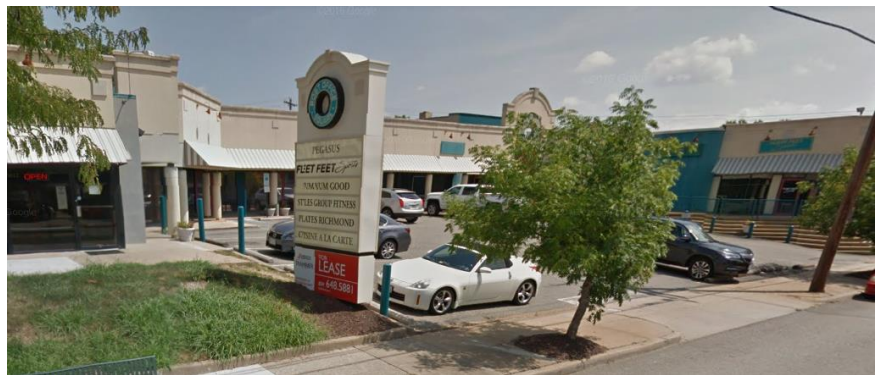




**JOIN OUR NEWEST TENANT, SPA 310**

**Property Features**

- 16,009 SF SPECIALTY RETAIL CENTER
- Two second floor office spaces available
- Excellent visibility on Patterson Avenue
- High income retail trade area (\$100K within 1 mile)
- New pylon signage



**Join Tenants**

**Demographics**

	1 Mile	3 Miles	5 Miles
Population	11,116	84,736	265,022
Avg. HH Income	\$163,166	\$112,259	\$85,036
Daytime Population	14,212	86,633	188,240

For more information, contact:

**JIM ASHBY**  
 Senior Vice President  
 804 697 3455  
[jim.ashby@thalhimer.com](mailto:jim.ashby@thalhimer.com)

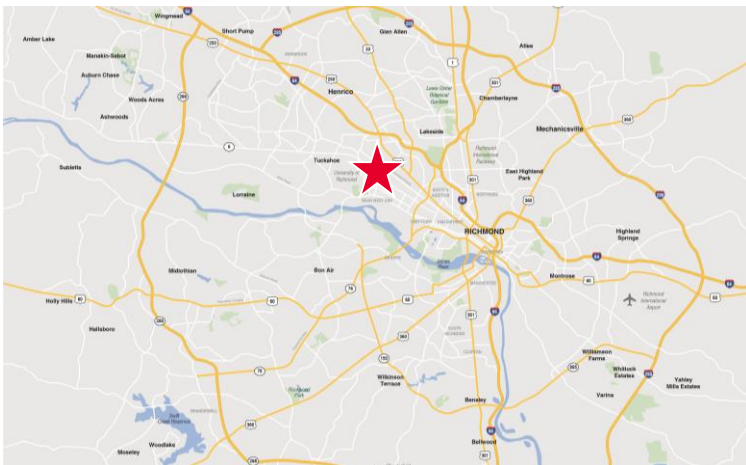
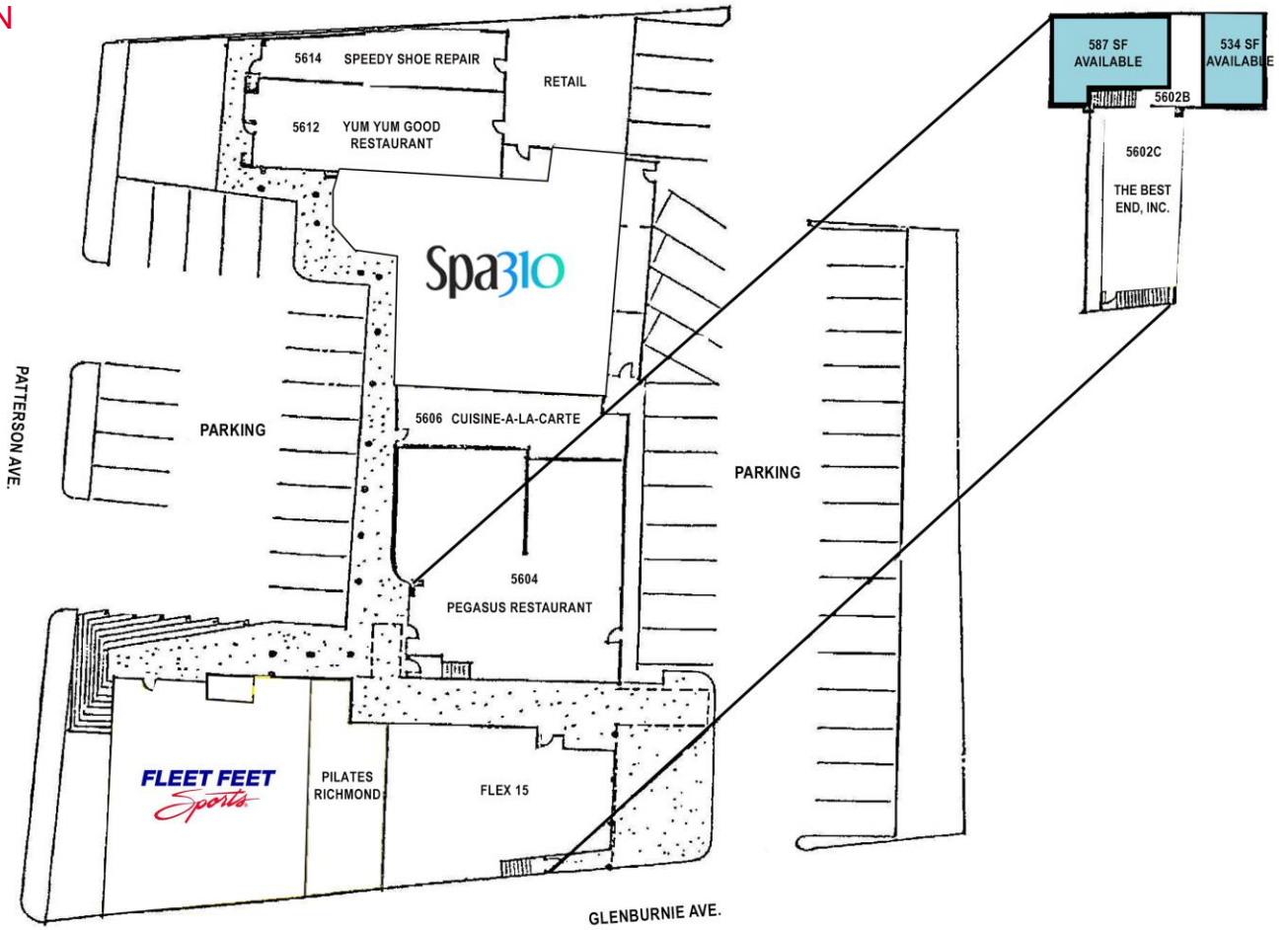
**REILLY MARCHANT**  
 Senior Associate  
 804 697 3478  
[reilly.marchant@thalhimer.com](mailto:reilly.marchant@thalhimer.com)

Thalhimer Center  
 11100 W. Broad Street  
 Glen Allen, VA 23060  
[www.thalhimer.com](http://www.thalhimer.com)

Independently Owned and Operated / A Member of the Cushman & Wakefield Alliance

Cushman & Wakefield | Thalhimer © 2015. No warranty or representation, express or implied, is made to the accuracy or completeness of the information contained herein, and same is submitted subject to errors, omissions, change of price, rental or other conditions, withdrawal without notice, and to any special listing conditions imposed by the property owner(s). As applicable, we make no representation as to the condition of the property (or properties) in question.

**SITE PLAN**



For more information, contact:

**JIM ASHBY**  
 Senior Vice President  
 804 697 3455  
[jim.ashby@thalhimer.com](mailto:jim.ashby@thalhimer.com)

**REILLY MARCHANT**  
 Senior Associate  
 804 697 3478  
[reilly.marchant@thalhimer.com](mailto:reilly.marchant@thalhimer.com)

Thalhimer Center  
 11100 W. Broad Street  
 Glen Allen, VA 23060  
[www.thalhimer.com](http://www.thalhimer.com)

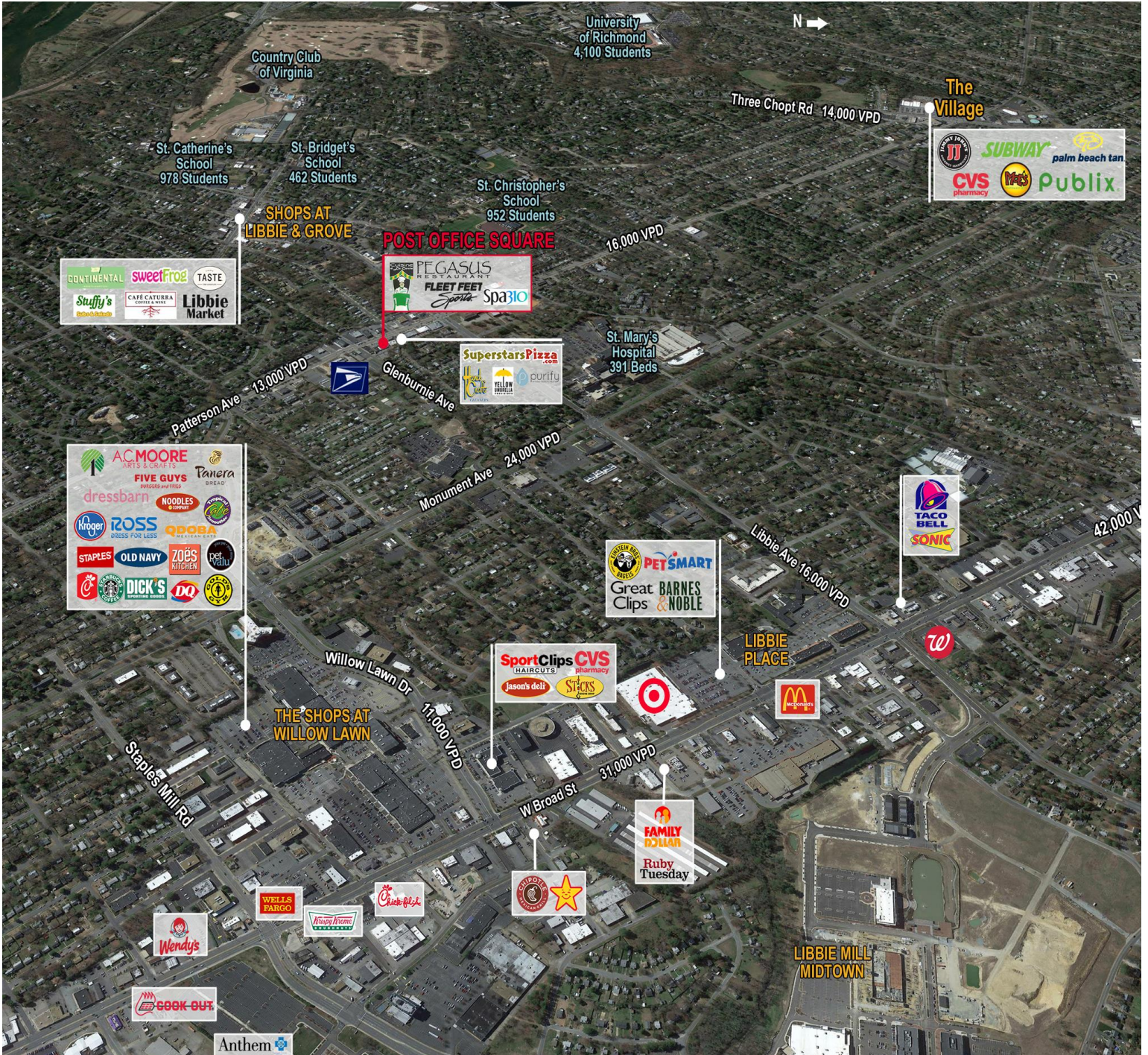
*Independently Owned and Operated / A Member of the Cushman & Wakefield Alliance*

*Cushman & Wakefield | Thalhimer © 2015. No warranty or representation, express or implied, is made to the accuracy or completeness of the information contained herein, and same is submitted subject to errors, omissions, change of price, rental or other conditions, withdrawal without notice, and to any special listing conditions imposed by the property owner(s). As applicable, we make no representation as to the condition of the property (or properties) in question.*



**RETAIL FOR LEASE**  
**Post Office Square**

5600-5614 Patterson Avenue | Richmond, VA 23226



For more information, contact:

**JIM ASHBY**  
 Senior Vice President  
 804 697 3455  
[jim.ashby@thalhimer.com](mailto:jim.ashby@thalhimer.com)

**REILLY MARCHANT**  
 Senior Associate  
 804 697 3478  
[reilly.marchant@thalhimer.com](mailto:reilly.marchant@thalhimer.com)

Thalhimer Center  
 11100 W. Broad Street  
 Glen Allen, VA 23060  
[www.thalhimer.com](http://www.thalhimer.com)