

FOR LEASE

7201 Central Street

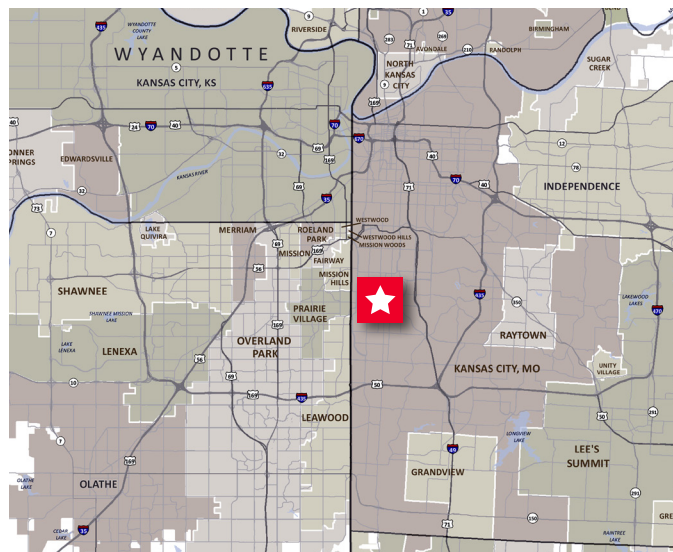
Kansas City, MO

1,500 - 4,500 SF



PROPERTY HIGHLIGHTS

- 4,500 SF Office Space Available
 - 1st Floor: 1,500 - 3,000 SF
 - 2nd Floor: 1,500 SF
- Lease Rate: \$22.00 PSF Modified Gross Net of Utilities and Janitorial
- Beautifully renovated building in the heart of Waldo
- Loft style office space with exposed brick and wood beams
- Ample, on-site parking
- Numerous restaurant and retail amenities within walking distance



CONOR TWIBELL

Director
+1 816 412 0244
conor.twibell@cushwake.com

JACK GOLDSBOROUGH

Associate
+1 816 412 0326
jack.goldsborough@cushwake.com

JOE GIWA

Associate
+1 816 216 5657
joe.giwa@cushwake.com



**CUSHMAN &
WAKEFIELD**

cushmanwakefield.com

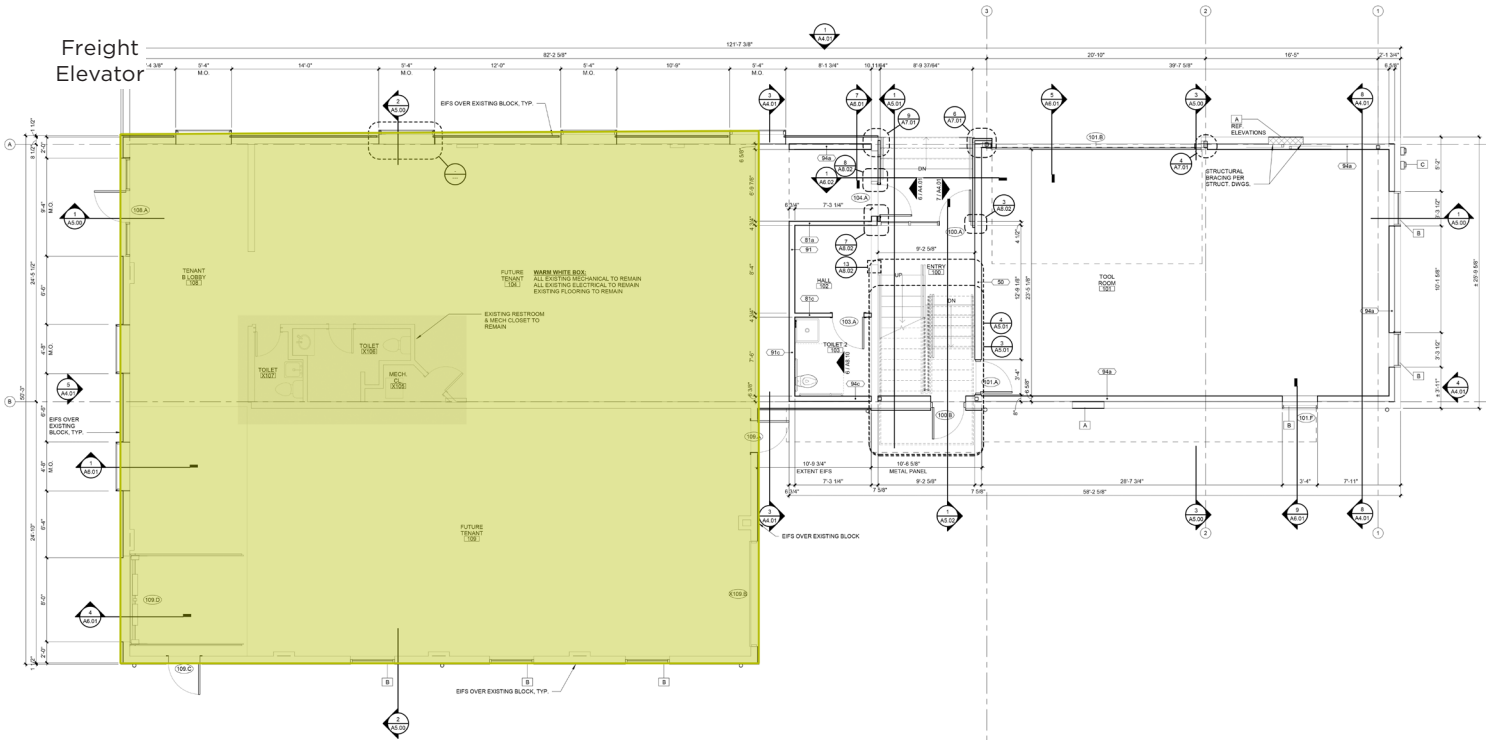
7201 Central Street

Kansas City, MO

1,500 - 4,500 SF

FOR LEASE

FLOOR 1



CONOR TWIBELL

Director
+1 816 412 0244
conor.twibell@cushwake.com

JACK GOLDSBOROUGH

Associate
+1 816 412 0326
jack.goldsborough@cushwake.com

JOE GIWA

Associate
+1 816 216 5657
joe.giwa@cushwake.com



CUSHMAN & WAKEFIELD

cushmanwakefield.com

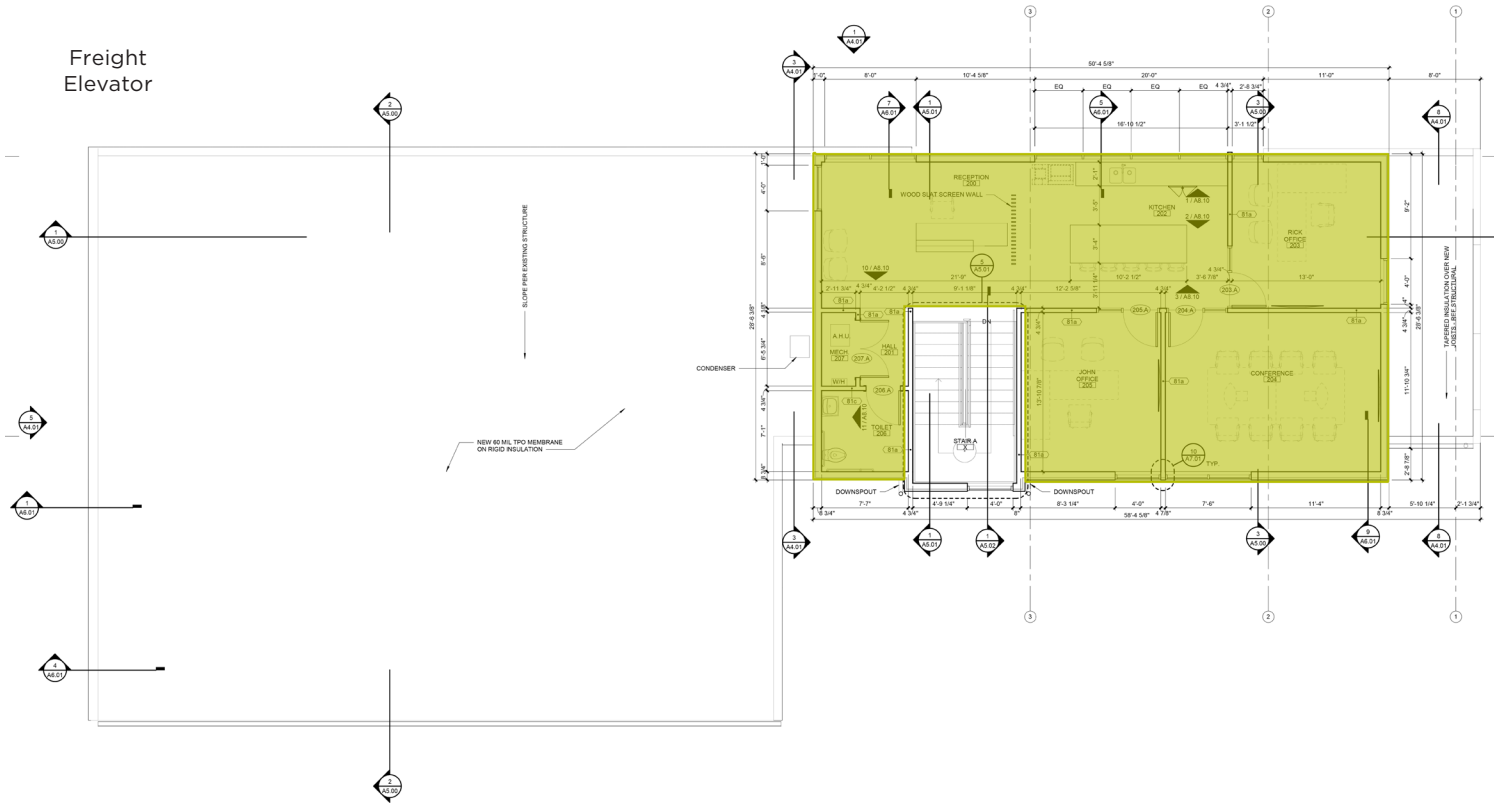
7201 Central Street

Kansas City, MO

1,500 - 4,500 SF

FOR LEASE

FLOOR 2



CONOR TWIBELL

Director
+1 816 412 0244
conor.twibell@cushwake.com

JACK GOLDSBOROUGH

Associate
+1 816 412 0326
jack.goldsborough@cushwake.com

JOE GIWA

Associate
+1 816 216 5657
joe.giwa@cushwake.com



**CUSHMAN &
WAKEFIELD**

cushmanwakefield.com

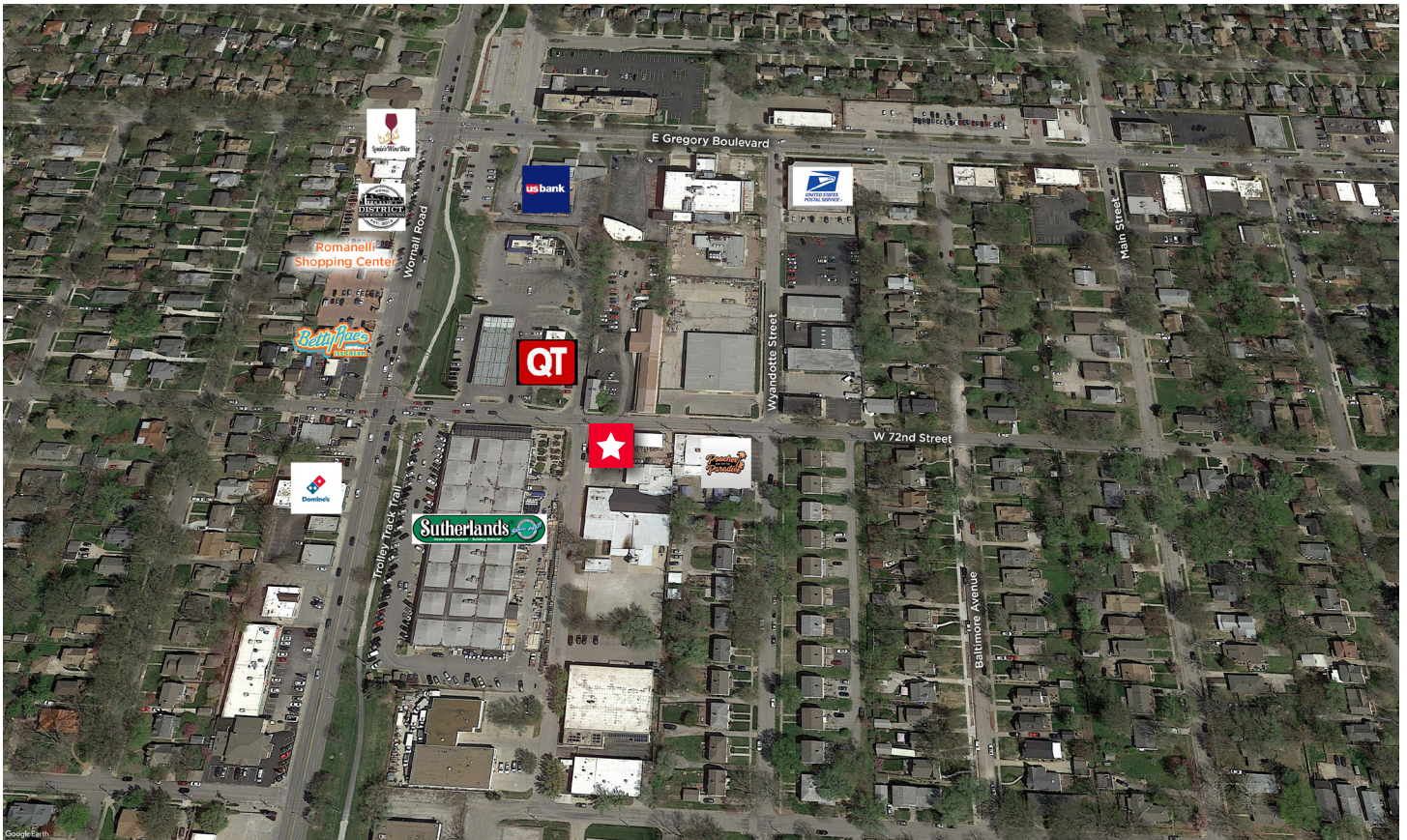
7201 Central Street

Kansas City, MO

1,500 - 4,500 SF

FOR LEASE

AERIAL



CONOR TWIBELL

Director

+1 816 412 0244

conor.twibell@cushwake.com

JACK GOLDSBOROUGH

Associate

+1 816 412 0326

jack.goldsborough@cushwake.com

JOE GIWA

Associate

+1 816 216 5657

joe.giwa@cushwake.com



**CUSHMAN &
WAKEFIELD**

cushmanwakefield.com