



Super 8 by Wyndham

503 14th Avenue SE, Watertown, SD 57201

Property Features

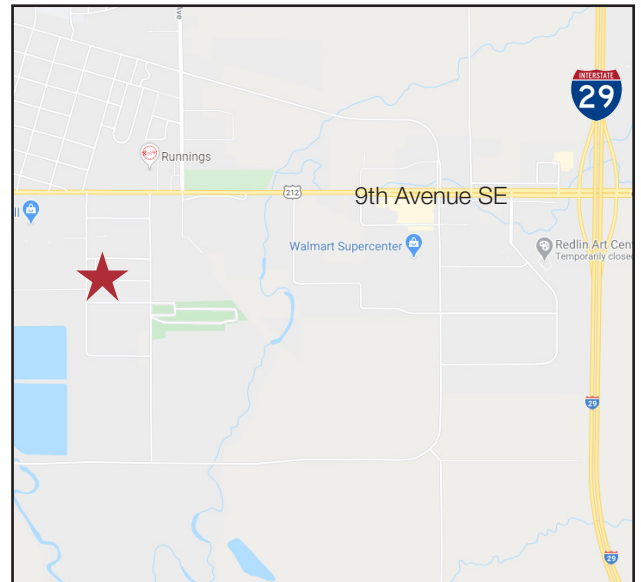
- 57 room hotel
- Building size: 23,676 sq. ft. (three floors)
- Lot size: 1.79 acres (78,071 sq. ft.)
- Annual occupancy: 59.75%
- ADR: \$64.06
- 2019 Revenue: \$1,087,628
- PIP list: Nothing pending
- Year built: 1981
- Ample surface parking available
- **All showings must be set up by broker**

Pricing

- Price Reduced: \$2,600,000
- \$45,614/per key
- Price includes FF&E
- 2019 Real Estate Taxes: \$10,712.86
- Financials available upon request

Location

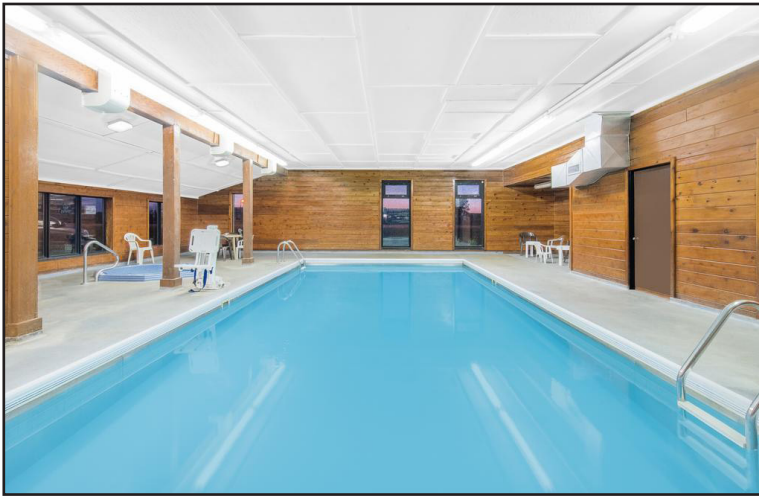
- Located just south of 9th Street SE
- Area neighbors include: Hy-Vee, Menards, Target, Wal-Mart, Perkin's, Watertown Mall, Culver's, Runnings



Dale Zomer
Senior Vice President

+1 605 444 7117 direct
+1 605 351 1218 mobile
dzomer@naisiouxfalls.com

For Sale
Hotel



NO WARRANTY OR REPRESENTATION, EXPRESS OR IMPLIED, IS MADE AS TO THE ACCURACY OF THE INFORMATION CONTAINED HEREIN, AND THE SAME IS SUBMITTED SUBJECT TO ERRORS, OMISSIONS, CHANGE OF PRICE, RENTAL OR OTHER CONDITIONS, PRIOR SALE, LEASE OR FINANCING, OR WITHDRAWAL WITHOUT NOTICE, AND OF ANY SPECIAL LISTING CONDITIONS IMPOSED BY OUR PRINCIPALS NO WARRANTIES OR REPRESENTATIONS ARE MADE AS TO THE CONDITION OF THE PROPERTY OR ANY HAZARDS CONTAINED THEREIN ARE ANY TO BE IMPLIED.

2500 W. 49th Street, Suite 100
Sioux Falls SD 57105
+1 605 357 7100
naisiouxfalls.com

For Sale
Hotel

