



1222 S Angelo Street

Seattle, Washington 98108

Property Features

- **Suite 1222:** 4,747 SF (3,260 SF Main Floor, 1,487 SF Mezzanine)
OR
- **Suite 1226:** 3,987 SF (2,460 SF Main Floor, 1,527 SF Mezzanine)
- C2-40 Zoning
- Fully HVAC with exposed ductwork
- Central Georgetown Location
- Seven on-site parking stalls
- Grade loading off alley
- Available with 60-days notice
- \$1.60/SF/Month, Gross



For more information:

John Vernon

+1 425 586 5638 • jvernon@nai-psp.com

Hans Swenson

+1 425 586 5630 • hswenson@nai-psp.com

NO WARRANTY OR REPRESENTATION, EXPRESS OR IMPLIED, IS MADE AS TO THE ACCURACY OF THE INFORMATION CONTAINED HEREIN, AND THE SAME IS SUBMITTED SUBJECT TO ERRORS, OMISSIONS, CHANGE OF PRICE, RENTAL OR OTHER CONDITIONS, PRIOR SALE, LEASE OR FINANCING, OR WITHDRAWAL WITHOUT NOTICE, AND OF ANY SPECIAL LISTING CONDITIONS IMPOSED BY OUR PRINCIPALS NO WARRANTIES OR REPRESENTATIONS ARE MADE AS TO THE CONDITION OF THE PROPERTY OR ANY HAZARDS CONTAINED THEREIN ARE ANY TO BE IMPLIED.

NAI Puget Sound Properties

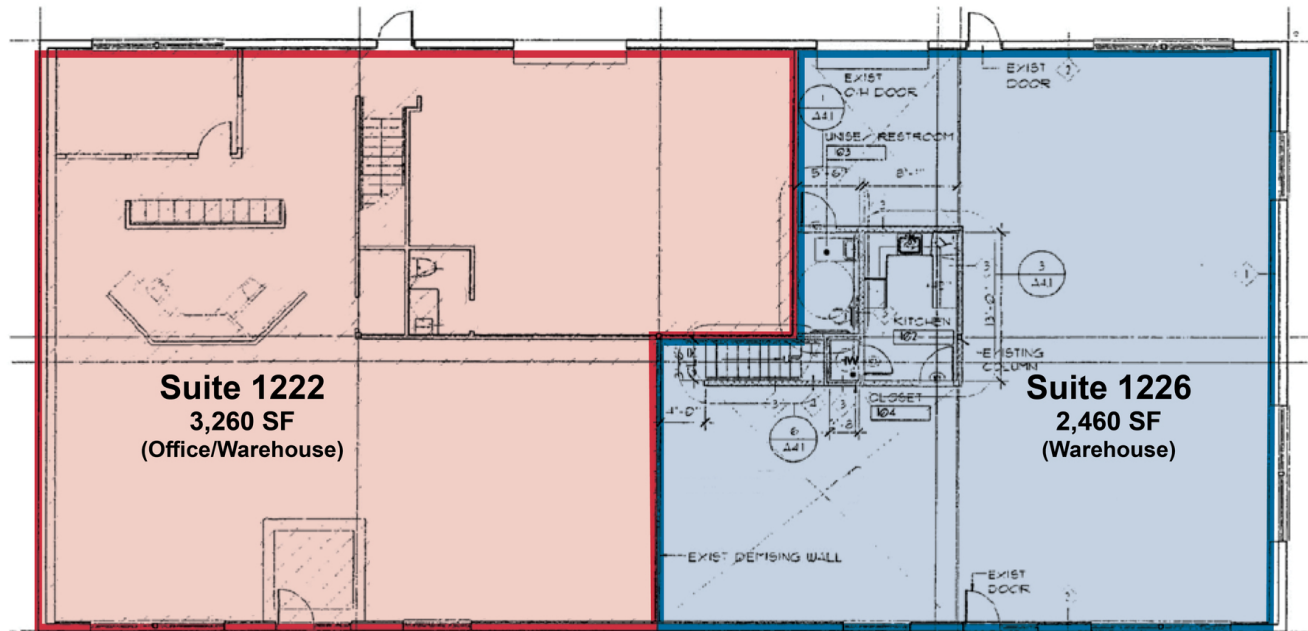
600 108th Avenue NE

+1 425 586 5600

<https://www.nai-psp.com>

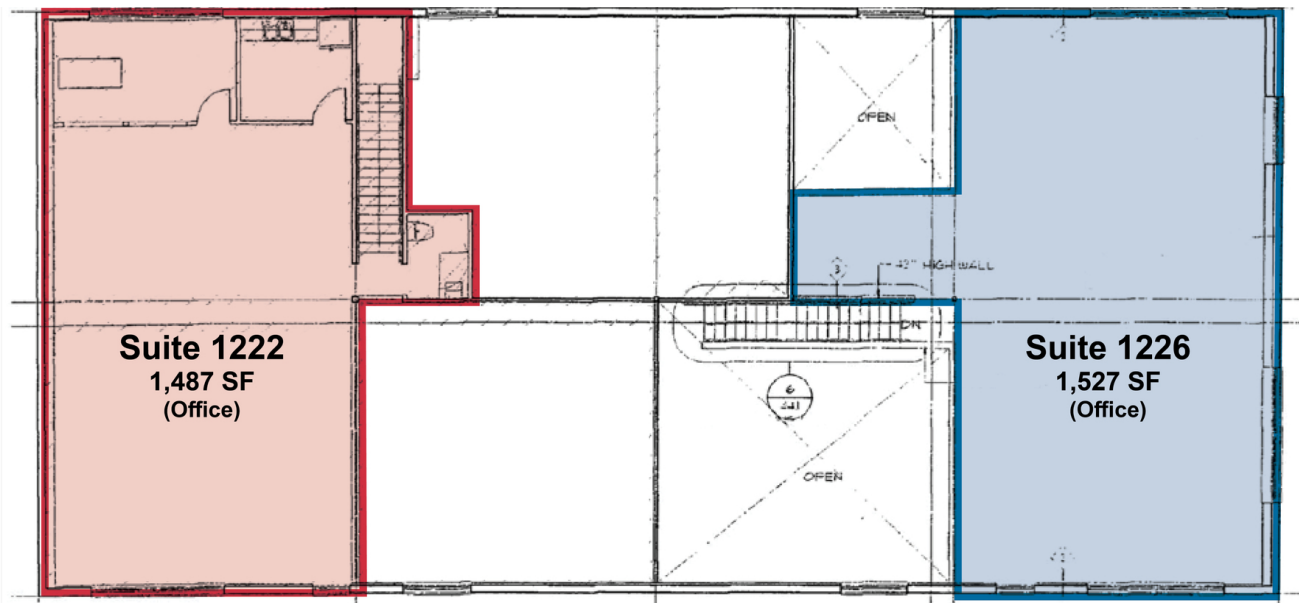
For Lease

Floor Plan



1

MAIN FLOOR



2

MEZZANINE



BELLEVUE | SEATTLE | TACOMA

600 108th Avenue NE, Suite 340
Bellevue, WA 98004
+1 425 586 5600

<https://www.nai-psp.com>

THE INFORMATION CONTAINED HEREIN HAS BEEN GIVEN TO US BY THE OWNER OF THE PROPERTY OR OTHER SOURCES WE DEEM RELIABLE, WE HAVE NO REASON TO DOUBT ITS ACCURACY, BUT WE DO NOT GUARANTEE IT. ALL INFORMATION SHOULD BE VERIFIED PRIOR TO PURCHASE OR LEASE.

For Lease

Angelo Building



BELLEVUE | SEATTLE | TACOMA

600 108th Avenue NE, Suite 340
Bellevue, WA 98004
+1 425 586 5600

<https://www.nai-psp.com>

THE INFORMATION CONTAINED HEREIN HAS BEEN GIVEN TO US BY THE OWNER OF THE PROPERTY OR OTHER SOURCES WE DEEM RELIABLE, WE HAVE NO REASON TO DOUBT ITS ACCURACY, BUT WE DO NOT GUARANTEE IT. ALL INFORMATION SHOULD BE VERIFIED PRIOR TO PURCHASE OR LEASE.



600 108th Avenue NE Suite 340
Bellevue, Washington 98004
+1 425 586 5600
nai-psp.com

For more information:

John Vernon
+1 425 586 5638
jvernon@nai-psp.com

Hans Swenson
+1 425 586 5630
hswenson@nai-psp.com