

# Class A Creative Office Sublease

1450 Chapin Avenue, Burlingame



## ±2,465 Square Feet Available

As exclusive agents, we are pleased to offer the following space:

- ◆ Class A Creative Space with Exposed Ceilings
- ◆ Open Plan with 2 Conference Rooms, Break Area and IT/Storage Closet
- ◆ Private Outdoor Patio Off Rear of Building in Addition to Interior Courtyard Space
- ◆ Close Proximity to Caltrain Station
- ◆ Prestigious Downtown Burlingame Location with Access to Restaurants, Shopping and Other Amenities
- ◆ Flexible Sublease Term

**Josh Rowell** Executive Vice President 650.358.5261 [jrowell@newmarkccarey.com](mailto:jrowell@newmarkccarey.com) CA RE License #01236434

**Newmark  
Knight Frank**

901 Mariners Island Boulevard, Suite 125, San Mateo, CA 94404

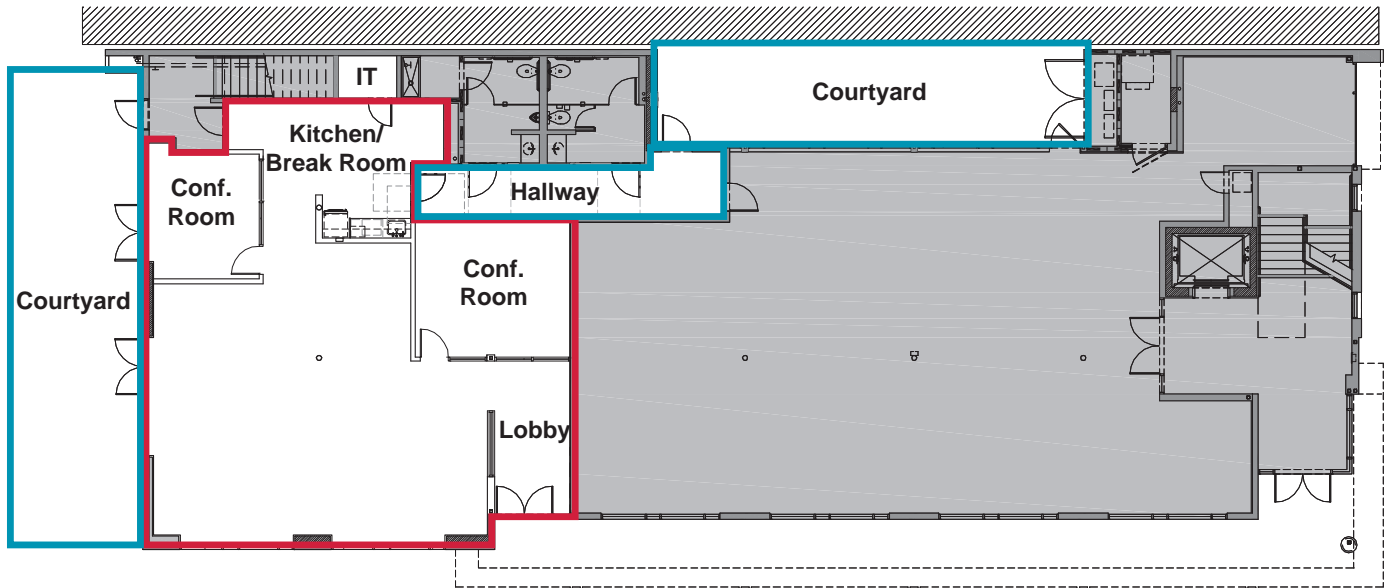
[www.ngkf.com](http://www.ngkf.com)

Procuring broker shall only be entitled to a commission, calculated in accordance with the rates approved by our principal only if such procuring broker executes a brokerage agreement acceptable to us and our principal and the conditions as set forth in the brokerage agreement are fully and unconditionally satisfied. Although all information furnished regarding property for sale, rental, or financing is from sources deemed reliable, such information has not been verified and no express representation is made nor is any to be implied as to the accuracy thereof and it is submitted subject to errors, omissions, change of price, rental or other conditions, prior sale, lease or financing, or withdrawal without notice and to any special conditions imposed by our principal.

17-1711•12/17

# Class A Creative Office Sublease

1450 Chapin Avenue, Burlingame



Available Space



Common Area

Josh Rowell Executive Vice President 650.358.5261 [jrowell@newmarkccarey.com](mailto:jrowell@newmarkccarey.com) CA RE License #01236434

**Newmark  
Knight Frank**

901 Mariners Island Boulevard, Suite 125, San Mateo, CA 94404

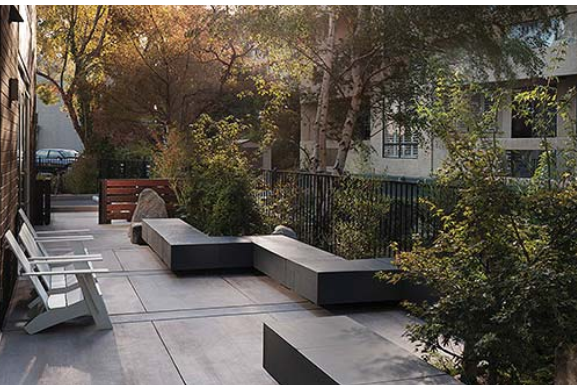
[www.ngkf.com](http://www.ngkf.com)

Procuring broker shall only be entitled to a commission, calculated in accordance with the rates approved by our principal only if such procuring broker executes a brokerage agreement acceptable to us and our principal and the conditions as set forth in the brokerage agreement are fully and unconditionally satisfied. Although all information furnished regarding property for sale, rental, or financing is from sources deemed reliable, such information has not been verified and no express representation is made nor is any to be implied as to the accuracy thereof and it is submitted subject to errors, omissions, change of price, rental or other conditions, prior sale, lease or financing, or withdrawal without notice and to any special conditions imposed by our principal.

17-1711•12/17

# Class A Creative Office Sublease

1450 Chapin Avenue, Burlingame



**Josh Rowell** Executive Vice President 650.358.5261 [jrowell@newmarkccarey.com](mailto:jrowell@newmarkccarey.com) CA RE License #01236434

**Newmark  
Knight Frank**

901 Mariners Island Boulevard, Suite 125, San Mateo, CA 94404

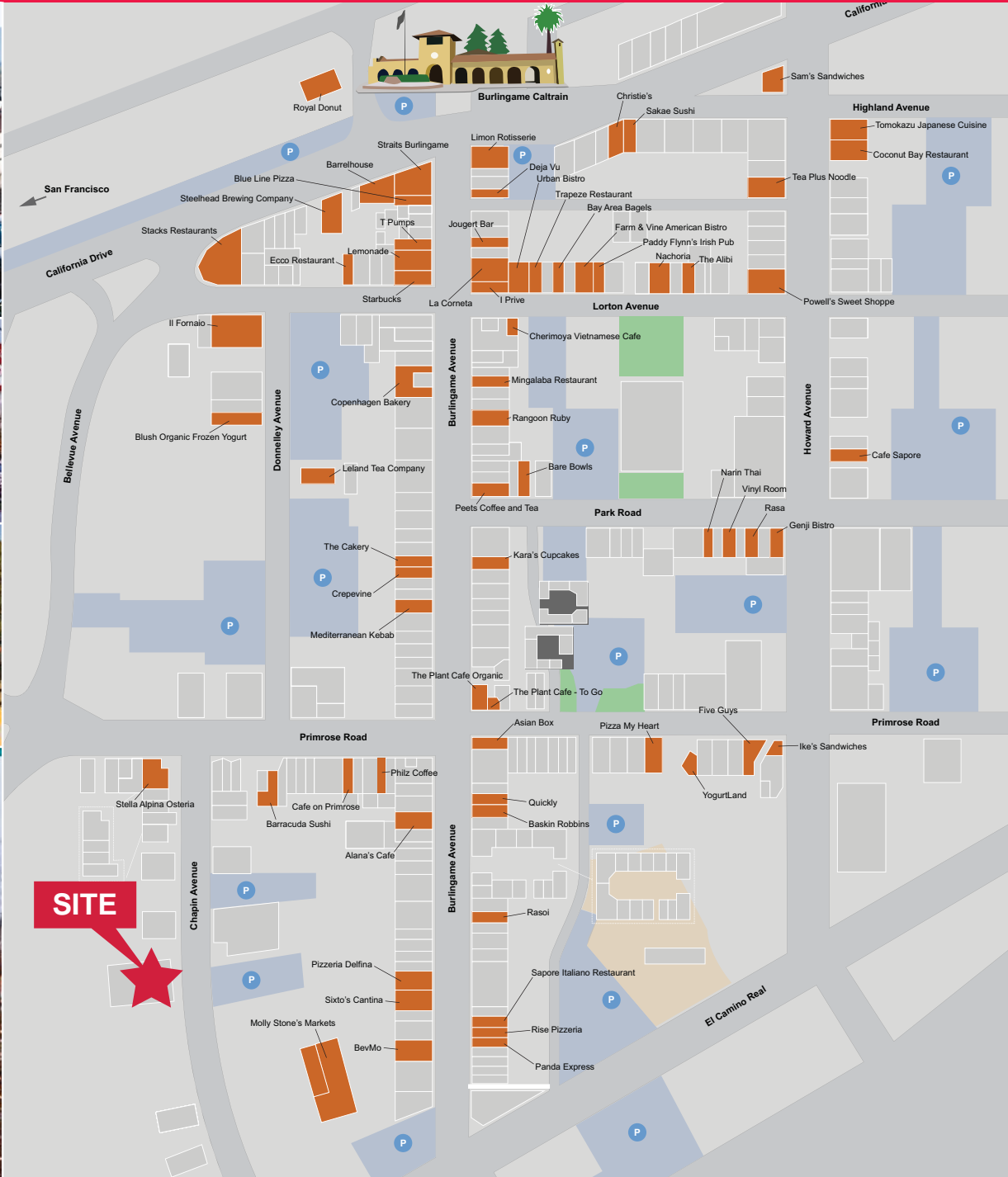
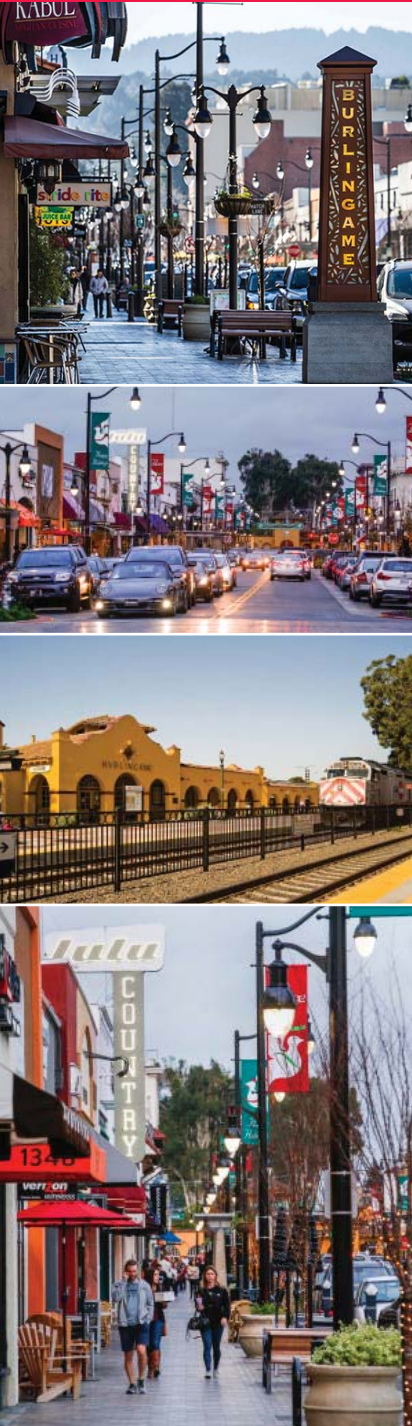
[www.ngkf.com](http://www.ngkf.com)

Procuring broker shall only be entitled to a commission, calculated in accordance with the rates approved by our principal only if such procuring broker executes a brokerage agreement acceptable to us and our principal and the conditions as set forth in the brokerage agreement are fully and unconditionally satisfied. Although all information furnished regarding property for sale, rental, or financing is from sources deemed reliable, such information has not been verified and no express representation is made nor is any to be implied as to the accuracy thereof and it is submitted subject to errors, omissions, change of price, rental or other conditions, prior sale, lease or financing, or withdrawal without notice and to any special conditions imposed by our principal.

17-1711\*12/17

# Class A Creative Office Sublease

1450 Chapin Avenue, Burlingame



**Josh Rowell** Executive Vice President 650.358.5261 [jrowell@newmarkccarey.com](mailto:jrowell@newmarkccarey.com) CA RE License #01236434

**Newmark  
Knight Frank**

901 Mariners Island Boulevard, Suite 125, San Mateo, CA 94404

[www.ngkf.com](http://www.ngkf.com)

Procuring broker shall only be entitled to a commission, calculated in accordance with the rates approved by our principal only if such procuring broker executes a brokerage agreement acceptable to us and our principal and the conditions as set forth in the brokerage agreement are fully and unconditionally satisfied. Although all information furnished regarding property for sale, rental, or financing is from sources deemed reliable, such information has not been verified and no express representation is made nor is any to be implied as to the accuracy thereof and it is submitted subject to errors, omissions, change of price, rental or other conditions, prior sale, lease or financing, or withdrawal without notice and to any special conditions imposed by our principal.