

OFFICE SPACE FOR LEASE

9880 BUILDING

One Office Remaining



**9880 SW BEAVERTON HILLSDALE HIGHWAY
BEAVERTON, OREGON 97005**

Suite 102

- ◆ Total 400/SF
- ◆ Open office space (Suite 102)
- ◆ Ground floor
- ◆ Separate outside entrance with canopy; Suite 102 and
- ◆ On-site parking included
- ◆ Space for company name to hang from canopy
- ◆ Located across the street from McCormick's Fish House

\$15/SF/Annual, Full Service

Randy Hoaglin
randyh@crrealestate.com
503.224.9554

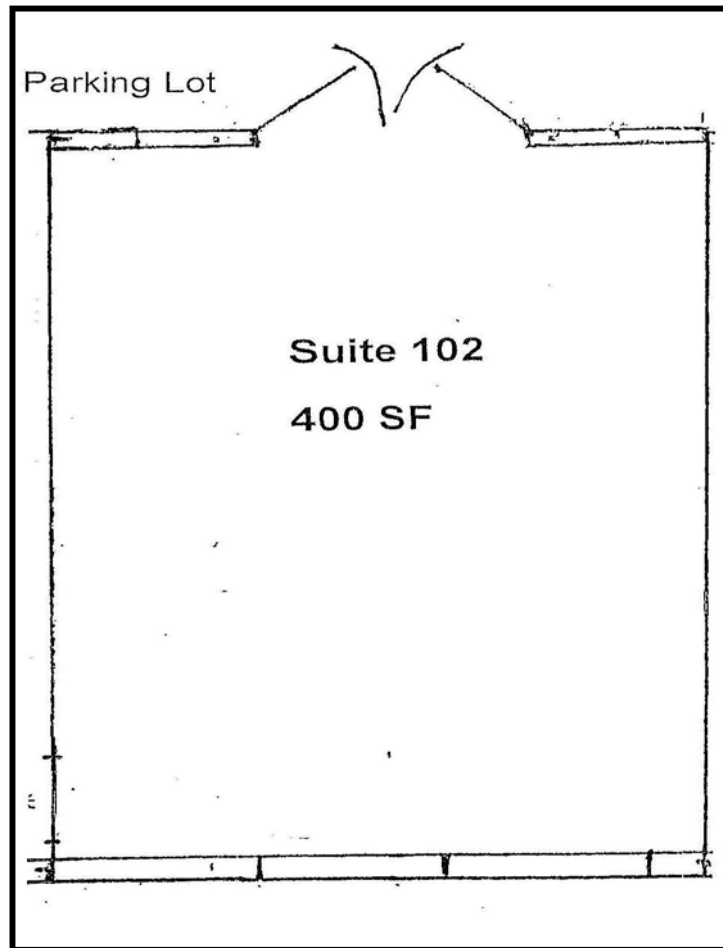
C&R
Real Estate
SERVICES CO.
Brokerage and Management

C&R Real Estate Services Co.
1440 SW Taylor Street
Portland, OR 97205
503.595.0968 fax
www.crrealestate.com

The information above has been obtained from sources believed reliable. While we do not doubt its accuracy, we have not verified it and make no guarantee, warranty or representation about it. It is your sole responsibility to independently confirm its accuracy and completeness. Any projections, opinions, assumptions or estimates used are for example only and do not represent the current or future performance of the property. The value of this transaction to you depends on tax and other factors which should be evaluated by your tax, financial and legal advisors. You and your advisors should conduct a careful, independent investigation of the property to determine to your satisfaction the suitability of the property for your needs.

OFFICE SPACE FOR LEASE

9880 BUILDING



The information above has been obtained from sources believed reliable. While we do not doubt its accuracy, we have not verified it and make no guarantee, warranty or representation about it. It is your sole responsibility to independently confirm its accuracy and completeness. Any projections, opinions, assumptions or estimates used are for example only and do not represent the current or future performance of the property. The value of this transaction to you depends on tax and other factors which should be evaluated by your tax, financial and legal advisors. You and your advisors should conduct a