

6151 Wilson Mills Road

HIGHLAND HEIGHTS
OHIO 44143

For Lease



Professional Office Complex

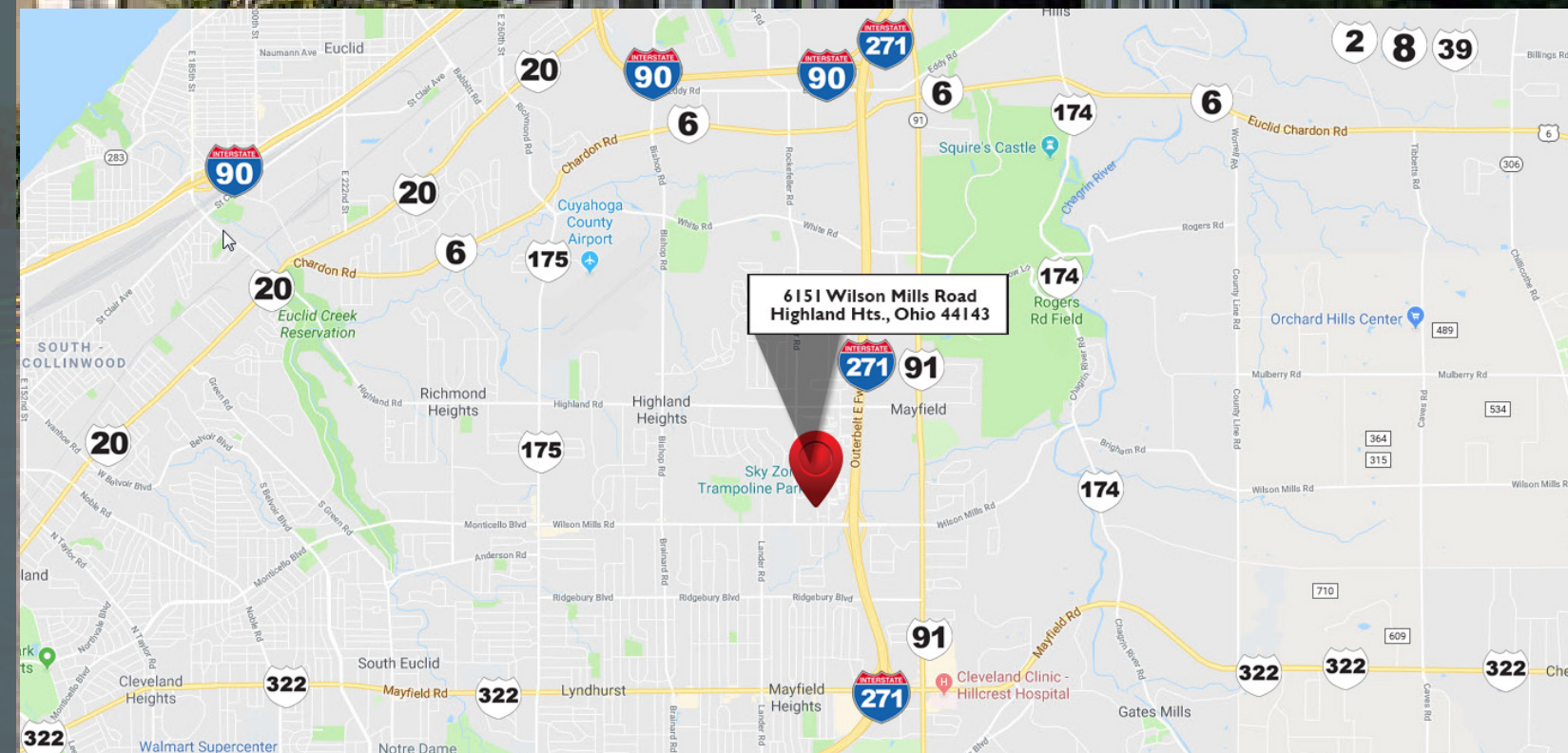
TOTAL SF	34,713 SF
OFFICE SF	34,713 SF
CONSTRUCTED	1971
REFURBISHED	1998
CONSTRUCTION TYPE	Glass / Masonry
LIGHTING	Fluorescent
HEAT	HVAC
AIR-CONDITIONING	100%
ROOF	Ballasted Rubber
PARKING	190 spaces
LEASE RATE	\$17.50 gross

Available Units

Unit	Total SF	Office SF
110	1,765 SF	1,765 SF
TBD	1,825 SF	1,825 SF
304	1,353 SF	1,353 SF
305	890 SF	890 SF
310	3,683 SF	3,683 SF

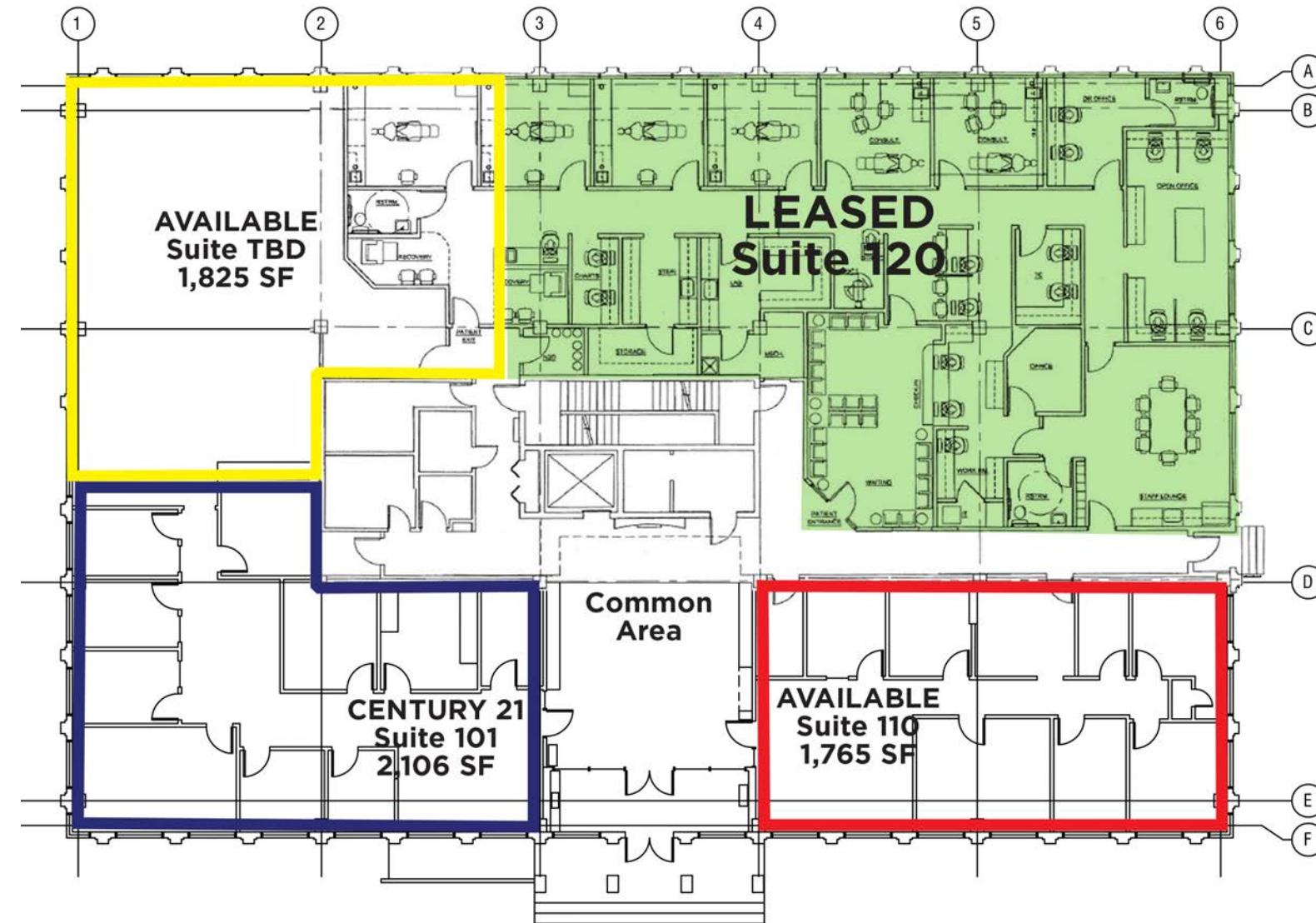
Highlights

- Conveniently located near the I-271 / Wilson Mills exit.
- Close to the I-90 exchange allowing for superior access to Cleveland's East Side and Lake County.
- Highland Place caters to the Medical field as well as professional organizations such as law firms, CPA's, and non-profits.
- The building features entrances on Wilson Mills as well as Minor Road.
- Abundant surface parking available.
- For convenience, there is signage on Wilson Mills Road.
- Abundant restaurants and shopping options within 2 miles. Join the likes of Progressive Insurance, Mayfield Schools, The Home Depot, and Phillips Medical.
- New signage.

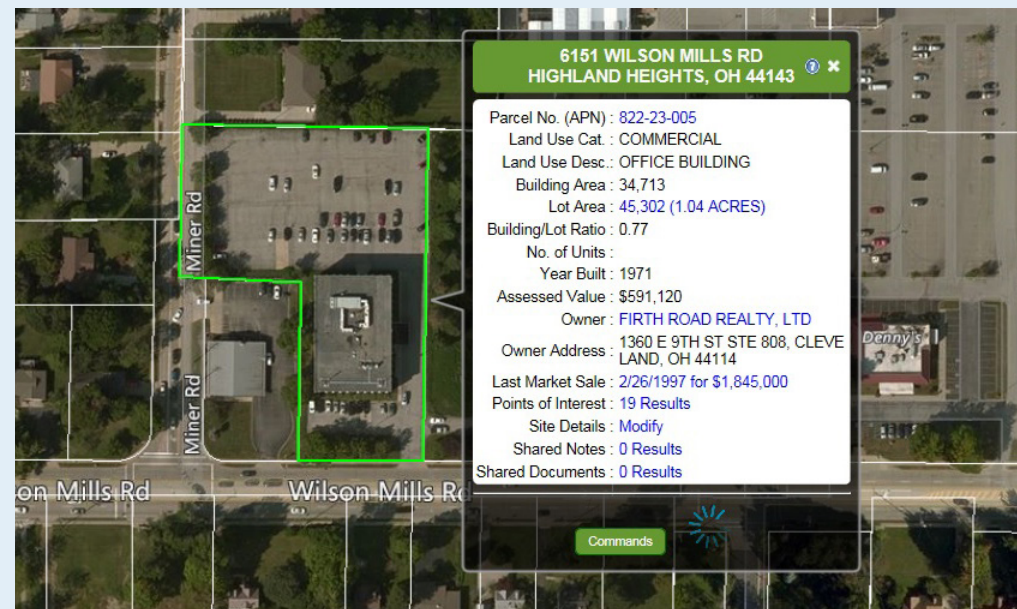


Floorplan & Photos

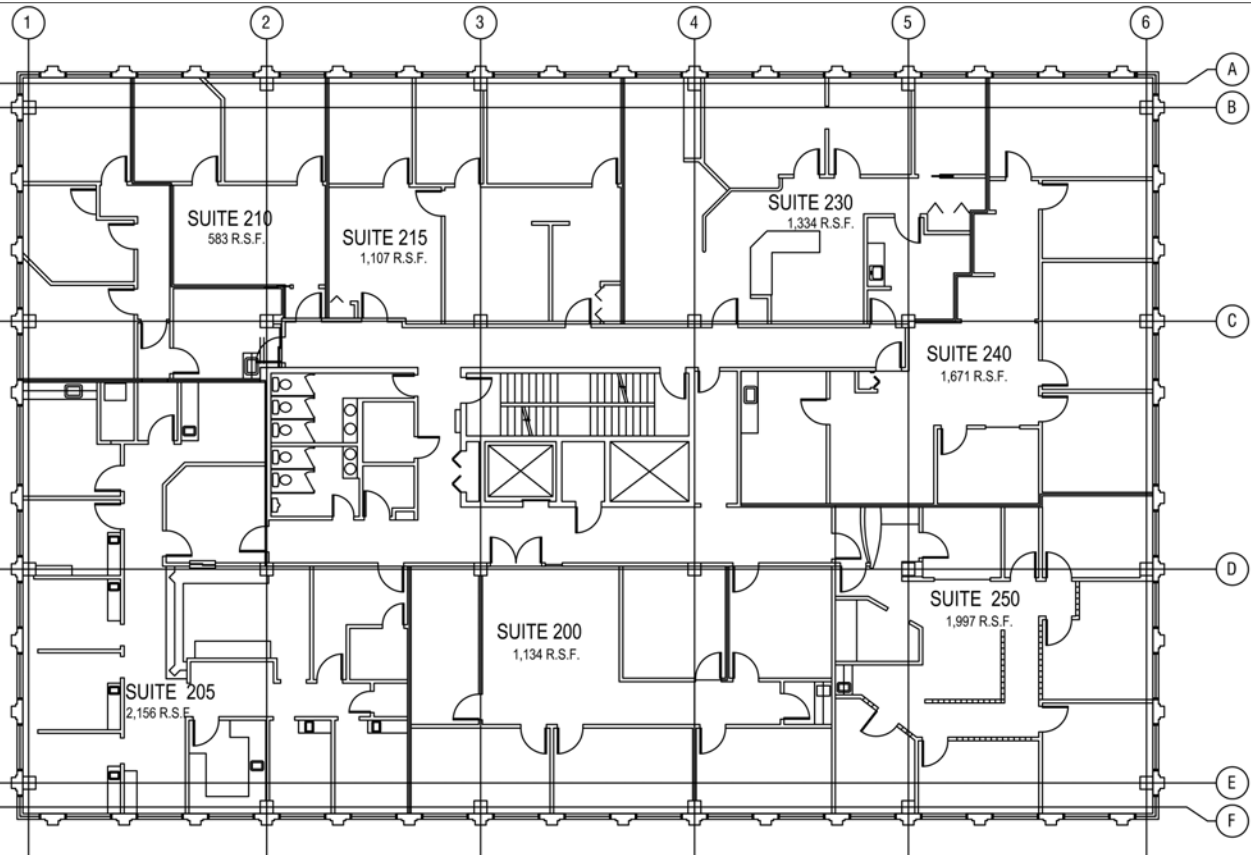
First Floor



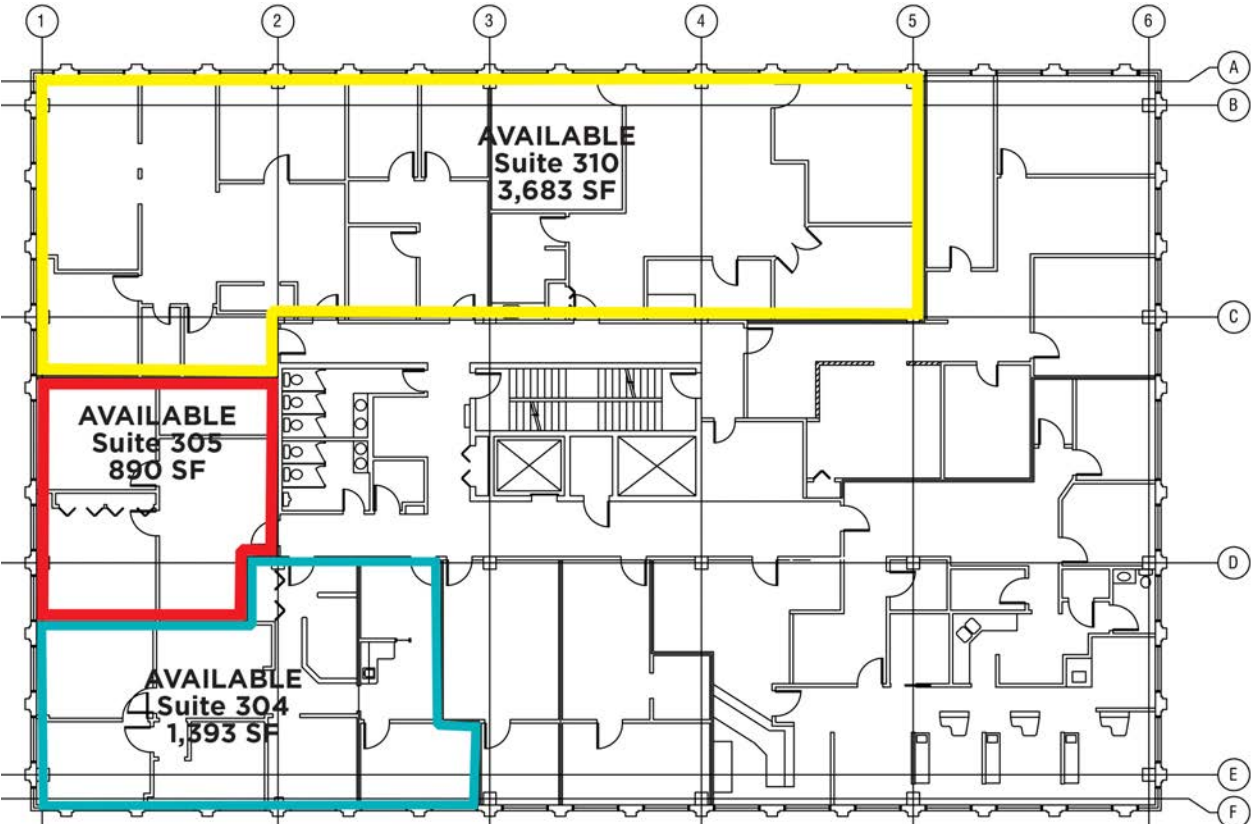
Office Photos



Second Floor - Fully Occupied



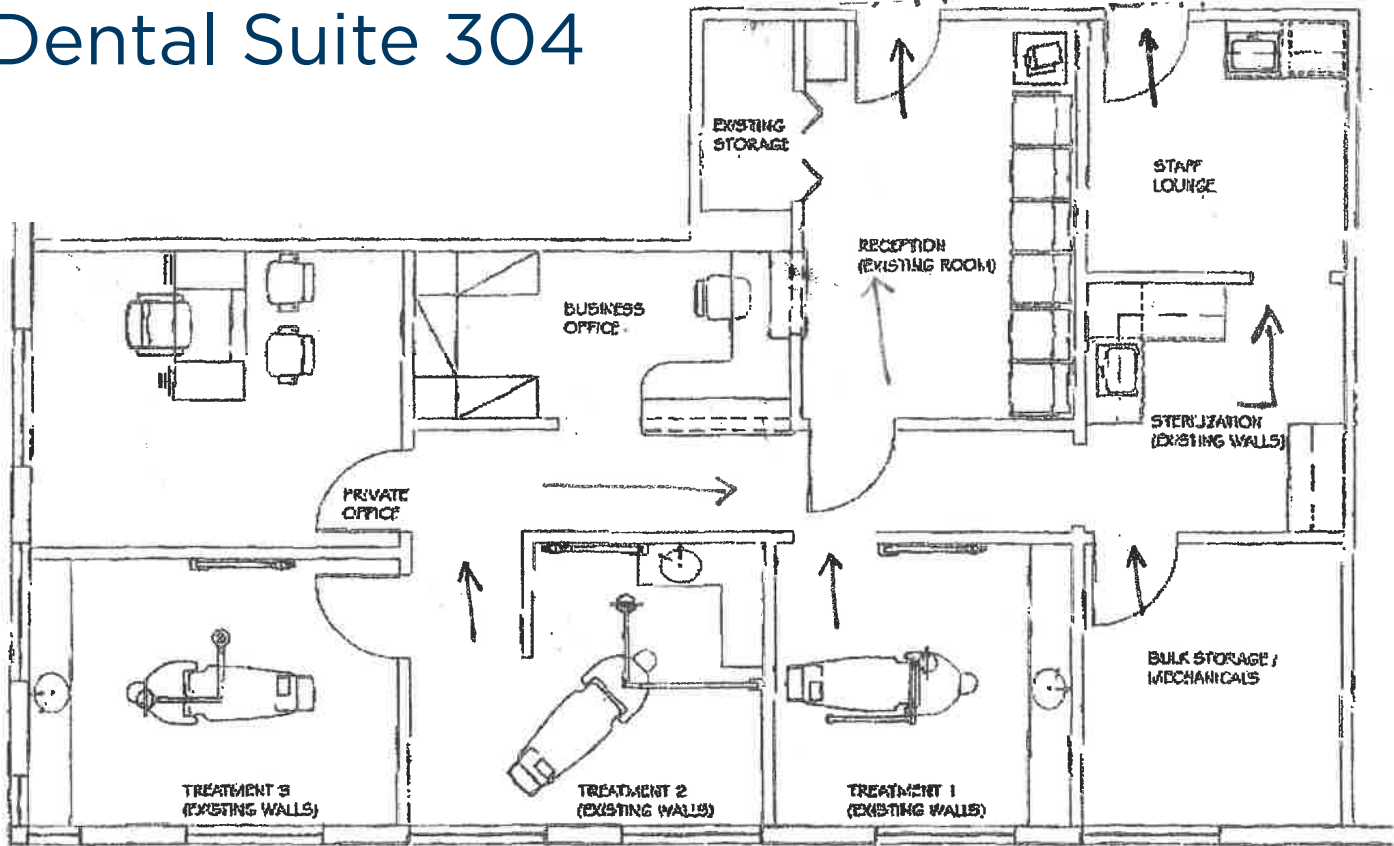
Third Floor



Contiguous = 5,968+/- SF

Floor Plans

Dental Suite 304



6151

Wilson Mills Road
Highland Hts., Ohio 44143



ELIOT KIJEWSKI, SIOR

Senior Vice President

216.525.1487

ekijewski@crescorealestate.com



PAUL DIVINCENZO

Vice President

216.525.1470

pdivincenzo@crescorealestate.com



DAVID LEB

Sales Associate

216.525.1488

dleb@crescorealestate.com



**CUSHMAN &
WAKEFIELD**



3 Summit Park Drive, Suite 200
Cleveland, Ohio 44131
216.520.1200
crescorealestate.com