

The Village at Greene Creek
Highway 9 (302 Village Creek Drive)
Boiling Springs, SC



- Retail spaces available in Village at Greene Creek on Highway 9
- 1753± SF (building A)
1318± SF (building A)
1389± SF (building B)
- Dynamic corridor with high visibility and exposure.
- Over 34,000 CPD on Hwy 9
- Co tenants include Eggs Up Grill Restaurant, Walgreens Pharmacy, Primrose Galleries, Southern Smiles Orthodontics, Edward Jones & others
- Spartanburg County Tax Map #2-51-00-629.00

LEASE RATE:
\$17.50 sq. ft. Net, Net, Net

BUILDING A



BUILDING B



CONTACT

Andy Hayes 864-706-0189
ahayes@spencerhines.com



Ben Hines 864-542-4777
benhines@spencerhines.com

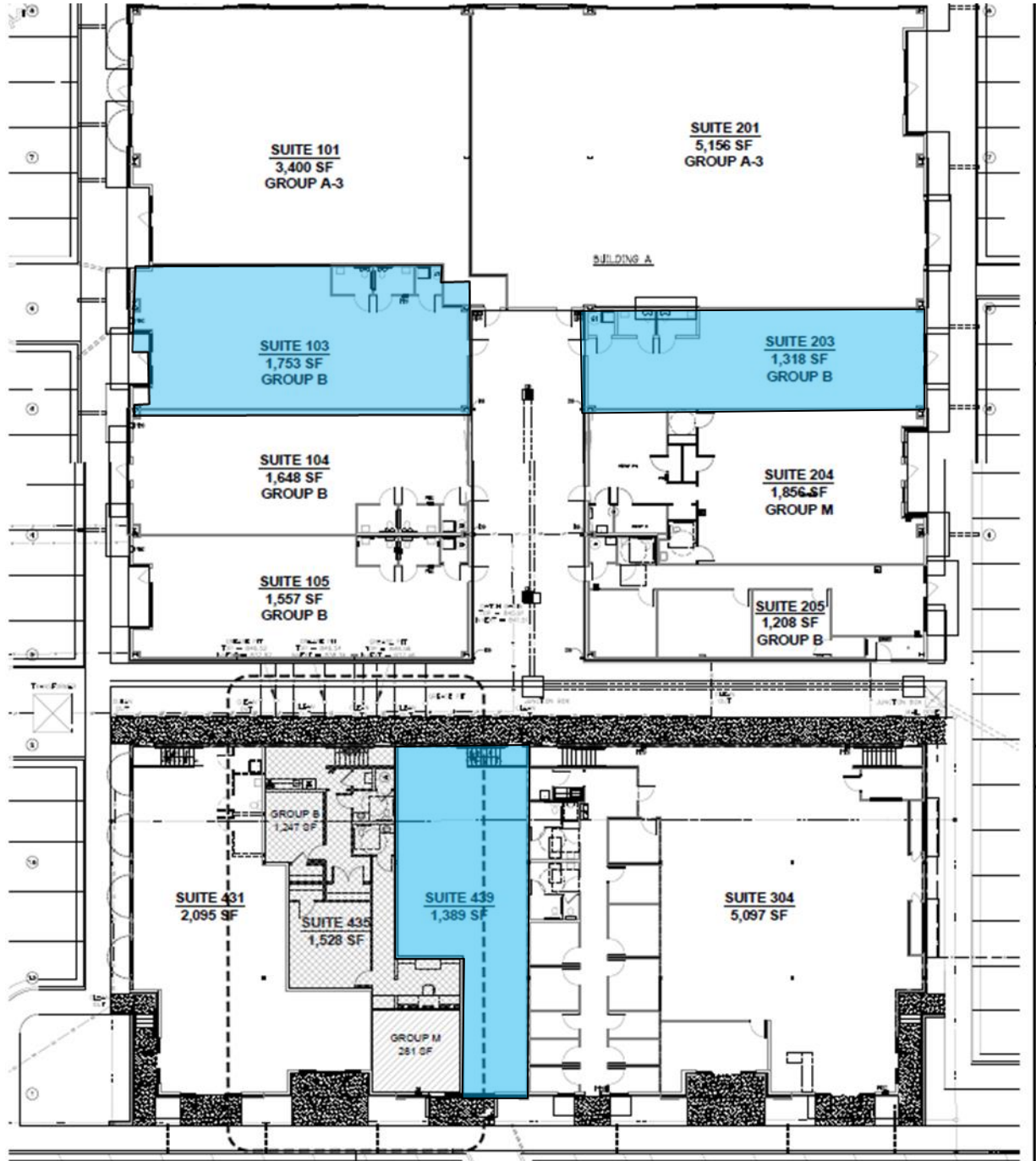


WWW.SPENCERHINES.COM

COMMERCIAL REAL ESTATE SALES, LEASING, & INVESTMENTS
380 S. Pine Street, Spartanburg, SC - 864.583.1001

The Village at Greene Creek
Highway 9 (302 Village Creek Drive)
Boiling Springs, SC

HIGHWAY 9 (Boiling Springs Road)



COMMERCIAL REAL ESTATE SALES, LEASING, & INVESTMENTS

WWW.SPENCERHINES.COM

380 S. Pine Street, Spartanburg, SC - 864.583.1001

No warranty or representation, expressed or implied, is made to the accuracy of the information contained herein, and the same is submitted subject to errors, omissions, change of price, rental or other conditions, imposed by the principles.