

For Sale

±5.02 AC

Industrial Land

Metal Park Drive

Columbia, South Carolina

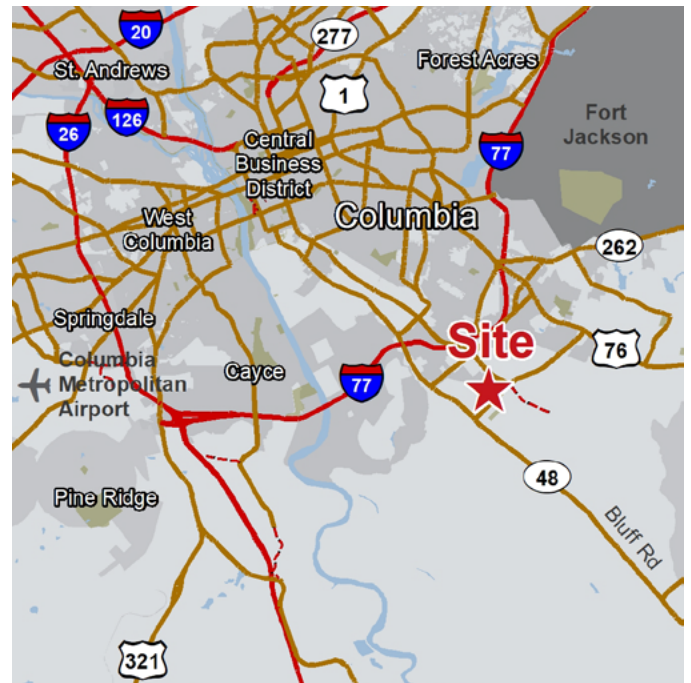
Property Features

- ±5.02 acres of industrial land for sale
- Zoning: M-1; Light Industrial; Richland County
- Site is located off Pineview Drive close to Shop Road
- 1.7 miles from I-77
- 0.9 miles from Bluff Road
- 2.5 miles from Hwy 378
- Growing industrial corridor
- Sales Price: \$190,000

For more information:

Nick Stomski, SIOR

+1 803 744 9859 • nstomski@naiavant.com



Jake Nidiffer

+1 803 744 9886 • jnidiffer@naiavant.com

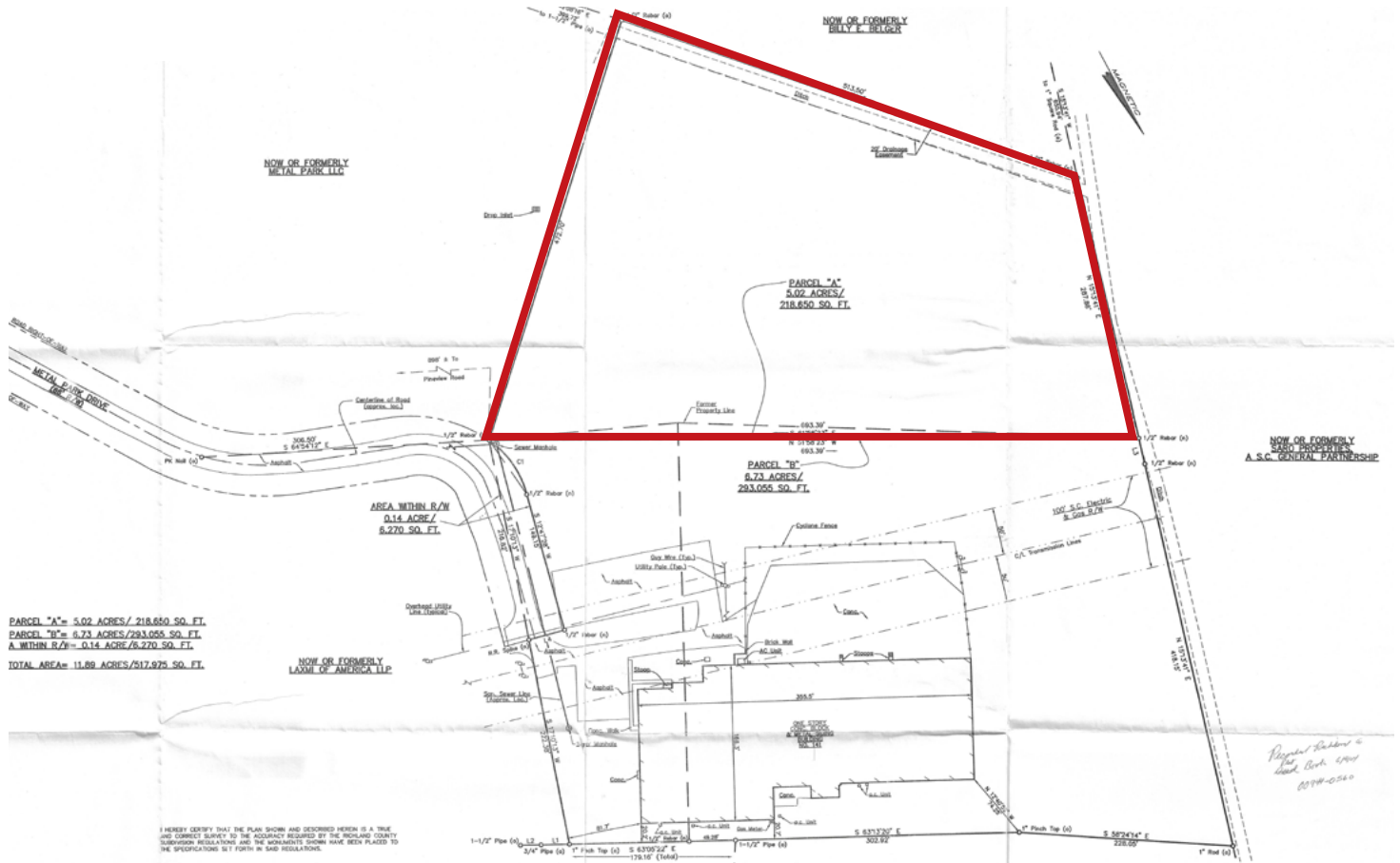
For Sale

±5.02 AC

Industrial Land

Plat

Metal Park Drive - Columbia, South Carolina



PARCEL "A"= 5.02 ACRES/ 218,650 SQ. FT.
PARCEL "B"= 8.73 ACRES/283,005 SQ. FT.
A WITHIN R/W= 0.14 ACRES/5,270 SQ. FT.
TOTAL AREA= 11.69 ACRES/517,925 SQ. FT.



Map Updated: Wednesday, April 11, 2018. This information submitted is not guaranteed. Although obtained from reliable sources, all information should be confirmed prior to use or reliance upon the information. This document may not be reproduced in whole or in part without the express written consent of NAI Avant.