



**FOR LEASE**  
10909 Portland Ave East  
Tacoma, WA 98445



# WEIR'S PLAZA

Carrie Walker | Andy Jessberger

First Western Properties—Tacoma Inc. | 253.472.0404  
6402 Tacoma Mall Blvd, Tacoma, WA 98409 | fwp-inc.com

**WEIR'S PLAZA** is conveniently located off of Highway 512 and Portland Avenue. It is a well established center with long term tenants.

**PORTLAND AVE EAST:**

**1,000 SF      \$18.00 PSF      PLUS \$4.95 NNN**

- Pylon signage available
- Ample parking
- Easily accessible



Population



Average HH Income

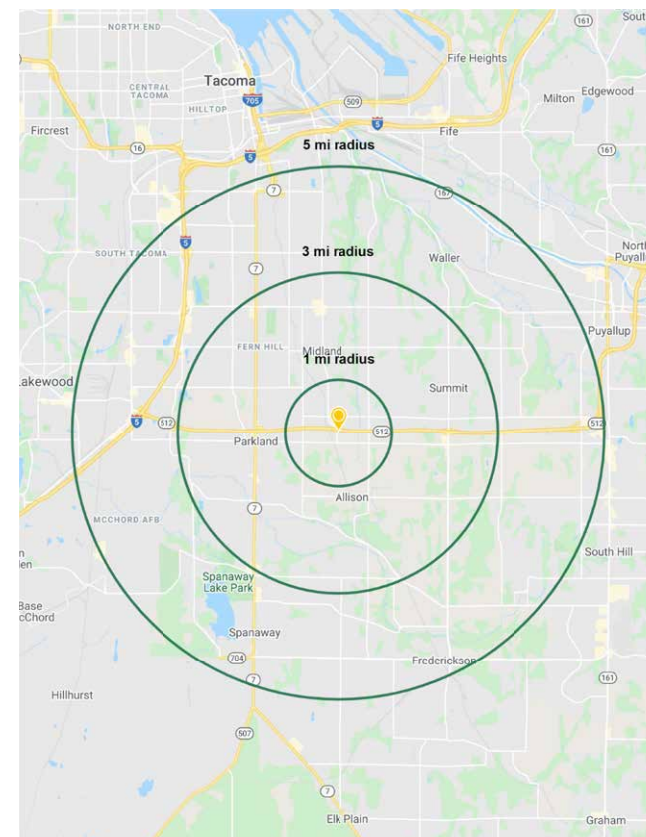


Daytime Population

Regis - 2020

	Population	Average HH Income	Daytime Population
Mile 1	6,175	\$63,503	5,122
Mile 3	87,764	\$71,866	46,855
Mile 5	232,322	\$76,383	129,309

**TENANTS**





LOCATION DETAILS



Located moments from SR 512



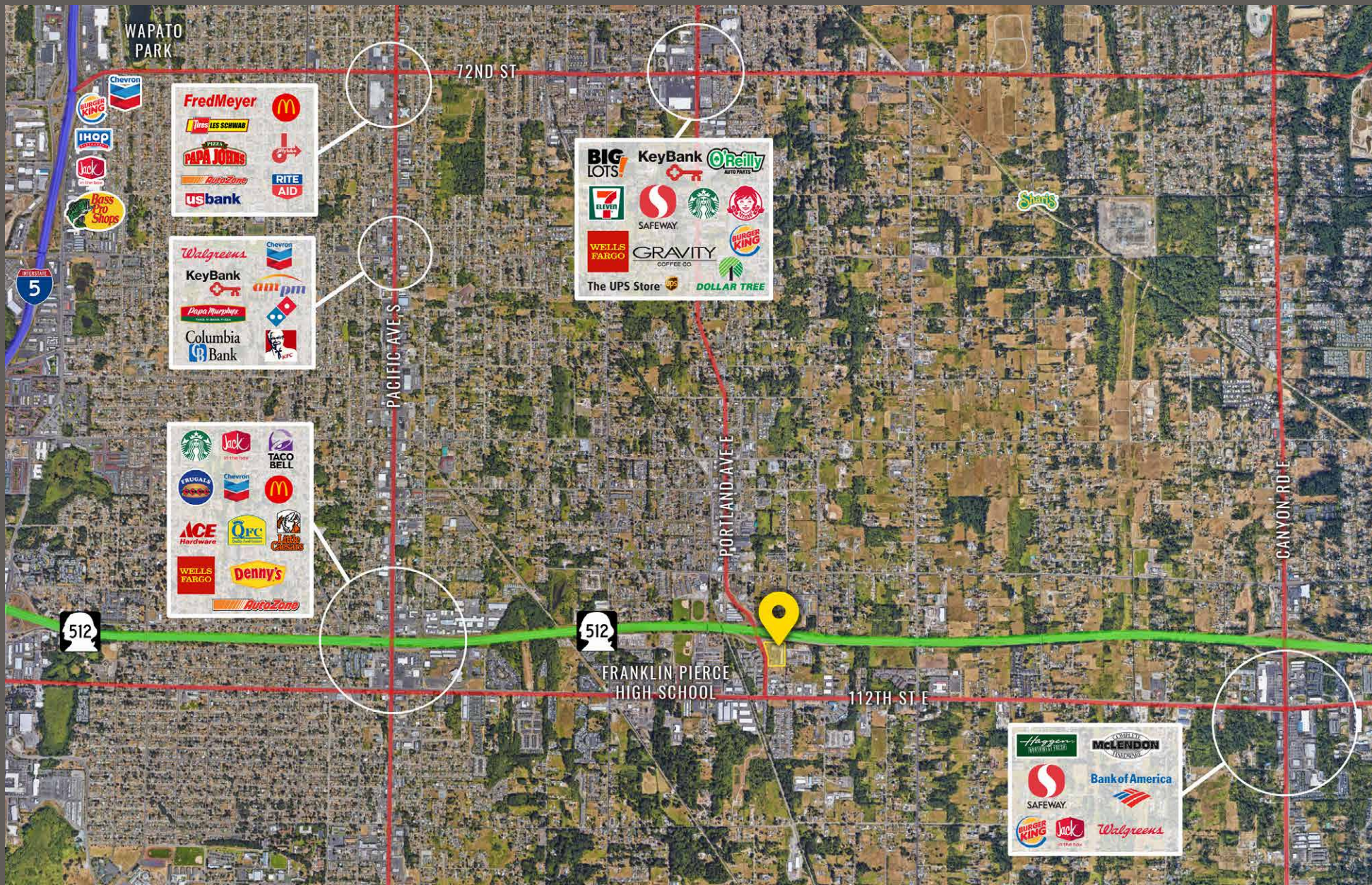
13,500 CPD  
Portland Ave E



13,900 CPD  
12th St E



LOCATION AERIAL





TACOMA | KIRKLAND | PORTLAND | SEATTLE



**RELATIONSHIP FOCUSED. RESULTS DRIVEN.**

**CARRIE WALKER**

253.284.3644  
carrie@firstwesternproperties.com

**ANDY JESSBERGER**

253.471.5507  
andy@firstwesternproperties.com



First Western Properties—Tacoma Inc. | 253.472.0404  
6402 Tacoma Mall Blvd, Tacoma, WA 98409 | fwp-inc.com

© First Western Properties, Inc. DISCLAIMER: The above information has been secured from sources believed to be reliable, however, no representations are made to its accuracy. Prospective tenants or buyers should consult their professional advisors and conduct their own independent investigation. Properties are subject to change in price and/or availability without notice.