

Become a Part of San Francisco's Rich History

PRIME FISHERMAN'S WHARF RETAIL FOR LEASE

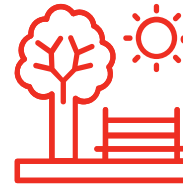


155 JEFFERSON STREET
SAN FRANCISCO

SEEKING BEST-IN-CLASS OPERATORS

**AVISON
YOUNG**

PROPERTY HIGHLIGHTS



±830 - ±11,196 RSF RETAIL
PLUS OUTDOOR SEATING POTENTIAL



POTENTIAL FOR SINGLE-TENANT IDENTITY



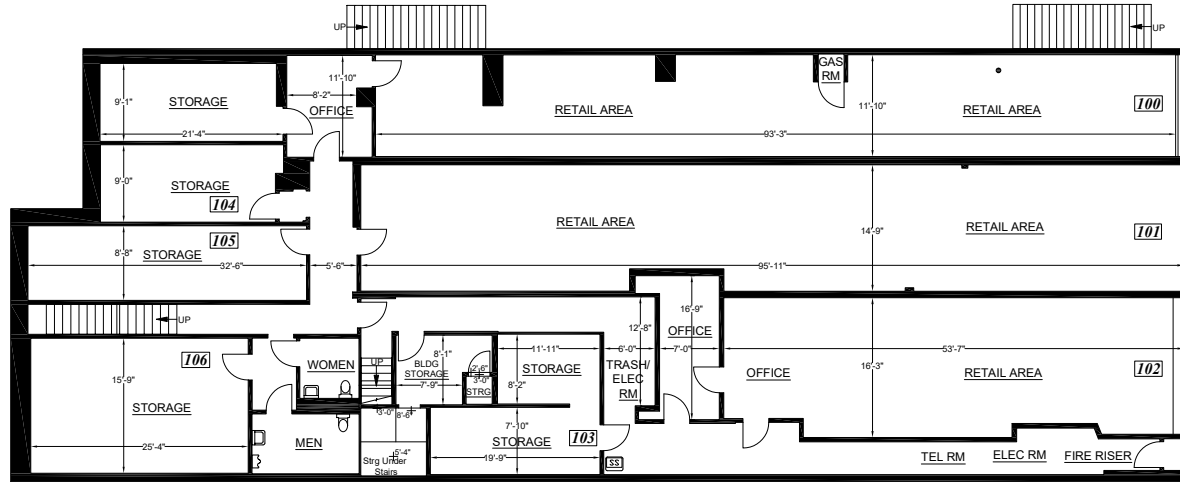
“MAIN AND MAIN” LOCATION
ON FISHERMAN’S WHARF – DIRECTLY
ACROSS FROM **BOUDIN’S BAKERY**,
WHICH HAD **\$27.2M IN GROSS REVENUE**
IN 2018



IDEALLY LOCATED BETWEEN
RIPLEY’S BELIEVE IT OR NOT AND
MADAME TUSSAUDS WAX MUSEUM

FLOOR PLANS

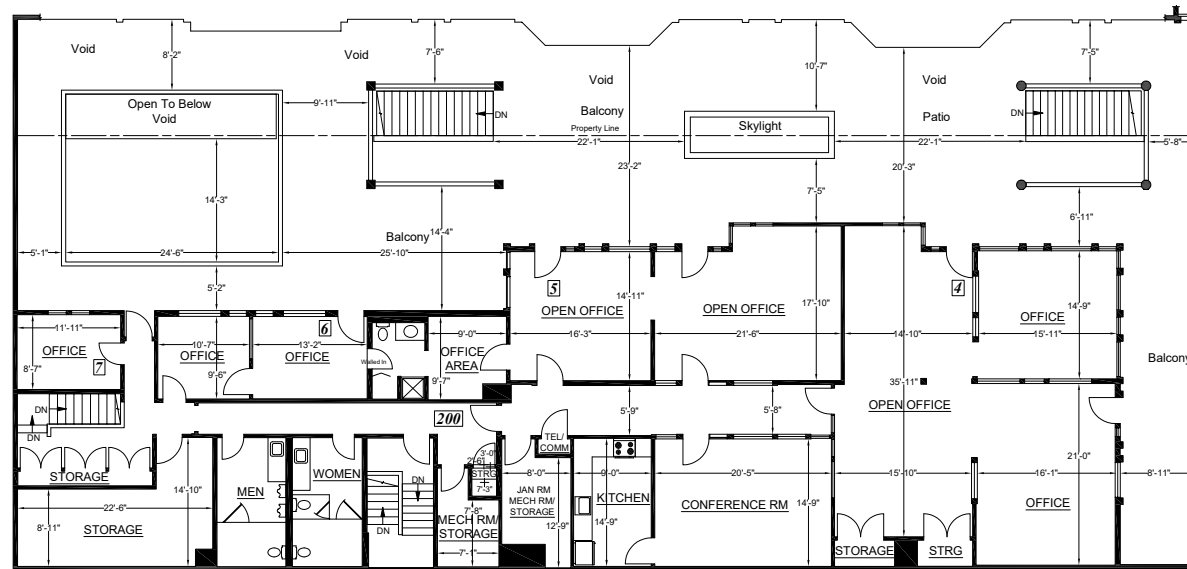
GROUND FLOOR PLAN



JEFFERSON STREET



UPPER FLOOR PLAN



JEFFERSON STREET



FISHERMAN'S WHARF AMENITIES



FISHERMAN'S WHARF VISITOR DEMOGRAPHICS

DAILY AVERAGE VISITOR SPENDING

\$2.8M

DAILY FOOT TRAFFIC

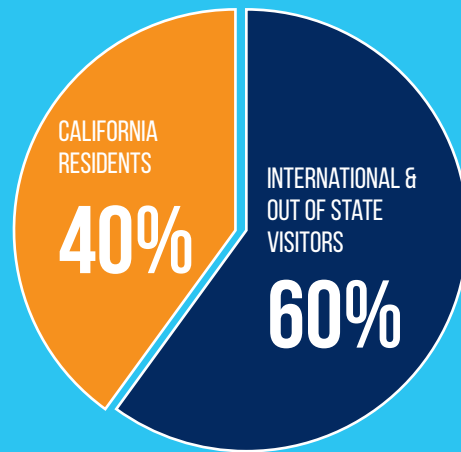
21,136

AVERAGE AGE

42 YEARS

COLLEGE GRADS

68 %



Source: sftravel.com

<p>ON AVERAGE</p> <p>65%</p> <p>OF SAN FRANCISCO VISITORS COME TO THE WHARF</p>	<p>ON AVERAGE</p> <p>48,000</p> <p>PEOPLE VISIT FISHERMAN'S WHARF DAILY</p>	<p>UP TO # OF VISITORS</p> <p>120,000</p> <p>DURING THE BUSY SUMMER SEASON/HOLIDAY/WEEKENDS</p>
<p>70%</p> <p>OF VISITORS WALK, TAKE PUBLIC TRANSIT, SHARE RIDES, OR BIKE TO THE WHARF</p>	<p>65%</p> <p>OF WHARF VISITORS STAY LONGER THAN 3 HOURS</p>	<p>22M</p> <p>POUNDS OF SEAFOOD UNLOADED YEARLY BY COMMERCIAL FISHING BOATS</p>
<p>\$1,200</p> <p>PER SQUARE FOOT AVERAGE RESTAURANT SALES IN 2019</p>	<p>\$1,000</p> <p>PER SQUARE FOOT AVERAGE RETAIL SPACES IN 2018</p>	<p>ABOUT</p> <p>\$640M</p> <p>IN RETAIL SALES & \$270M IN HOTEL EXPENDITURES</p>

TOP 6 FISHERMAN'S WHARF 2018 BUSINESS SALES

\$27.2 MILLION **BOUDIN | SF™**
SAN FRANCISCO SOURDOUGH



\$13.1 MILLION



\$12.5 MILLION



\$11.5 MILLION



\$9.5 MILLION



\$8.4 MILLION

Source: Port of San Francisco



Cameron Baird
415.301.3175
cameron.baird@avisonyoung.com
Re Lic: #01503816

Andrew Rebennack
415.349.3392
andrew.rebennack@avisonyoung.com
Re Lic: #02025935



Platinum
member