

MIDTOWN

NEW YORK
NY

711 FIFTH AVENUE



CONCEPTUAL RENDERING

SPACE DETAILS

LOCATION

East block between East 55th and 56th Streets

APPROXIMATE SIZE

Ground Floor 2,525 SF

Basement 1,503 SF

CEILING HEIGHT

Ground Floor 19 FT

TERM

12 Year Sublease

POSSESSION

Arranged

SITE STATUS

Currently Jaquet Droz

NEIGHBORS

Louis Vuitton, Salvatore Ferragamo, Saks Fifth Avenue, Versace, Rolex, Valentino, BLANCPAIN, Coach, Ermenegildo Zegna, Cartier, Jimmy Choo and Tag Heuer

COMMENTS

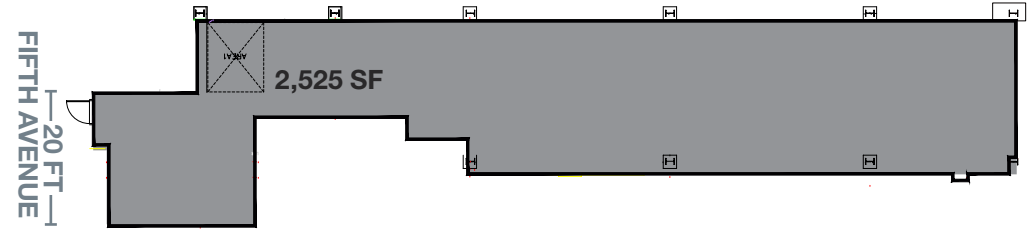
Within close proximity to Rockefeller Center, St. Patrick's Cathedral, MoMa, Central Park, Radio City Music Hall and Times Square

Steps from the  Fifth Avenue/53rd Street station

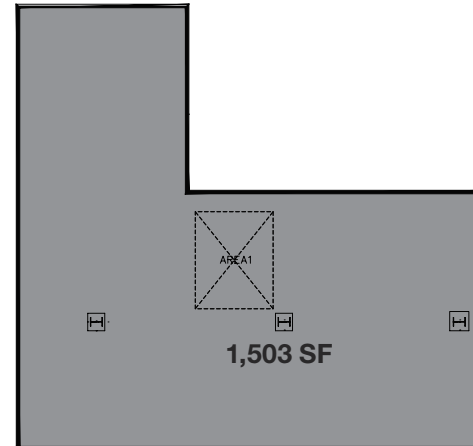
One of the highest densities of tourists and daytime office populations, with some of the most expensive retail real estate in the world

Saks Fifth Avenue generates more than \$18,000 in revenue per square foot annually

GROUND FLOOR



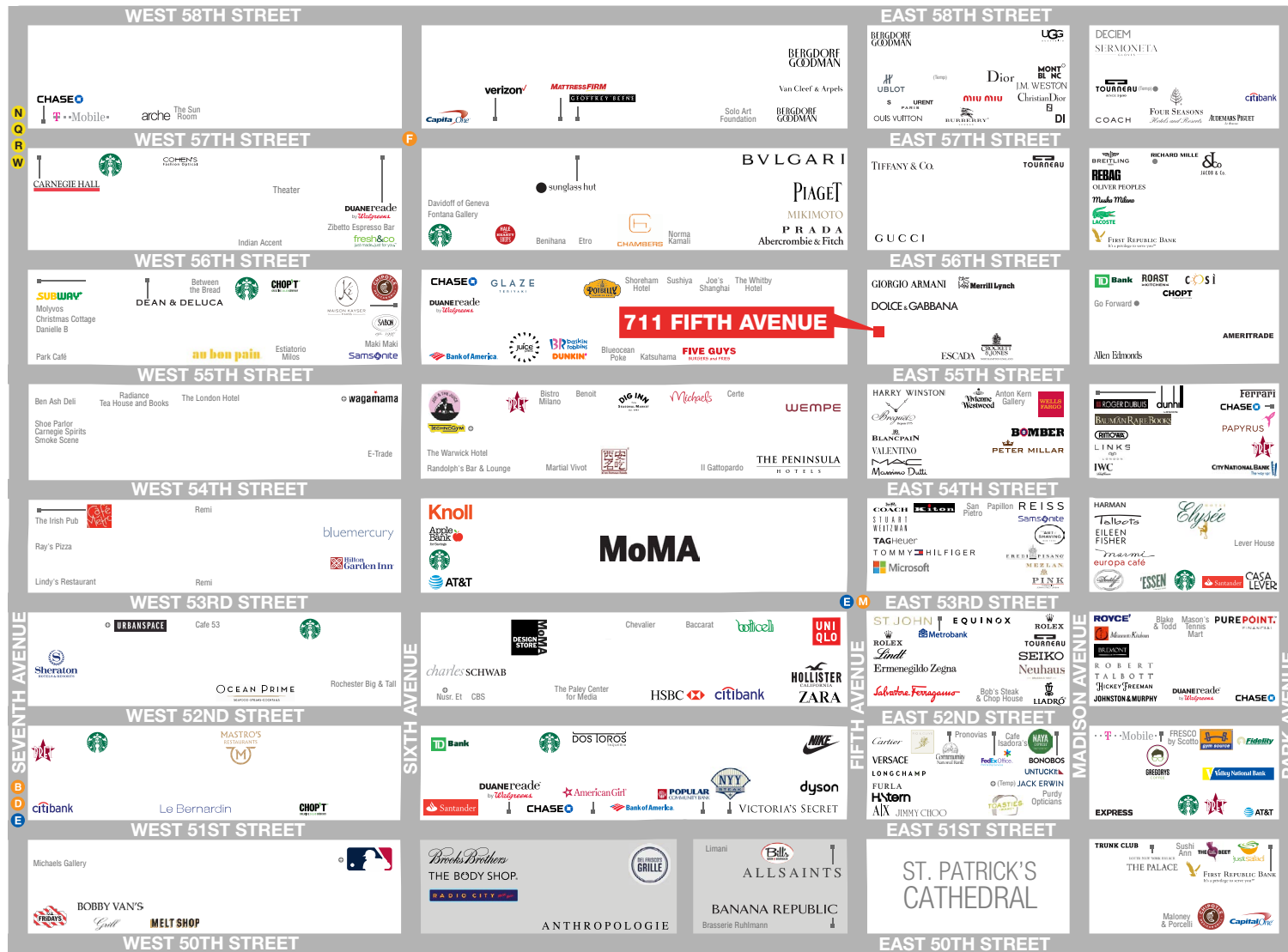
BASEMENT



AREA NEIGHBORS



AREA RETAIL



CONTACT EXCLUSIVE AGENTS

LUCAS KOOYMAN
212.372.2384
lkooyman@ngkf.com

JASON PRUGER
212.372.2092
jpruger@ngkf.com

ADAM WEINBLATT
212.372.2103
aweinblatt@ngkf.com

➕ COMING SOON



NGKF.COM

© 2019 NEWMARK KNIGHT FRANK RETAIL. The information contained herein has been obtained from sources deemed reliable but has not been verified and no guarantee, warranty or representation, either express or implied, is made with respect to such information. Terms of sale or lease and availability are subject to change or withdrawal without notice.