

RETAIL SPACE AVAILABLE

1023 FLATBUSH AVENUE



LOCATION:

East side of Flatbush Ave
between Tilden Ave and Duryea Pl

SIZE:

Ground floor: 2,720 sf
Selling lower level: 3,800 sf

FRONTAGE:

34'

POSSESSION:

Immediate

COMMENTS:

- Located in the heart of high-traffic, Flatbush Ave shopping corridor
- Proximity to 2 MTA subway stations for Q, 2, & 5 trains with combined ridership of over 2.9 million riders per year
- Adjacent to newly renovated, 3,000 seat Kings Theater
- Prominent visibility and signage opportunity on one of Brooklyn's busiest thoroughfares with over 20,000 drivers per day

NEIGHBORS:

Rainbow Shops, Staples, Old Navy, Gap, Lane Bryant, Cookies, V.I.M, Payless, Bally Total Fitness, Dunkin Donuts, CVS, King's Theater

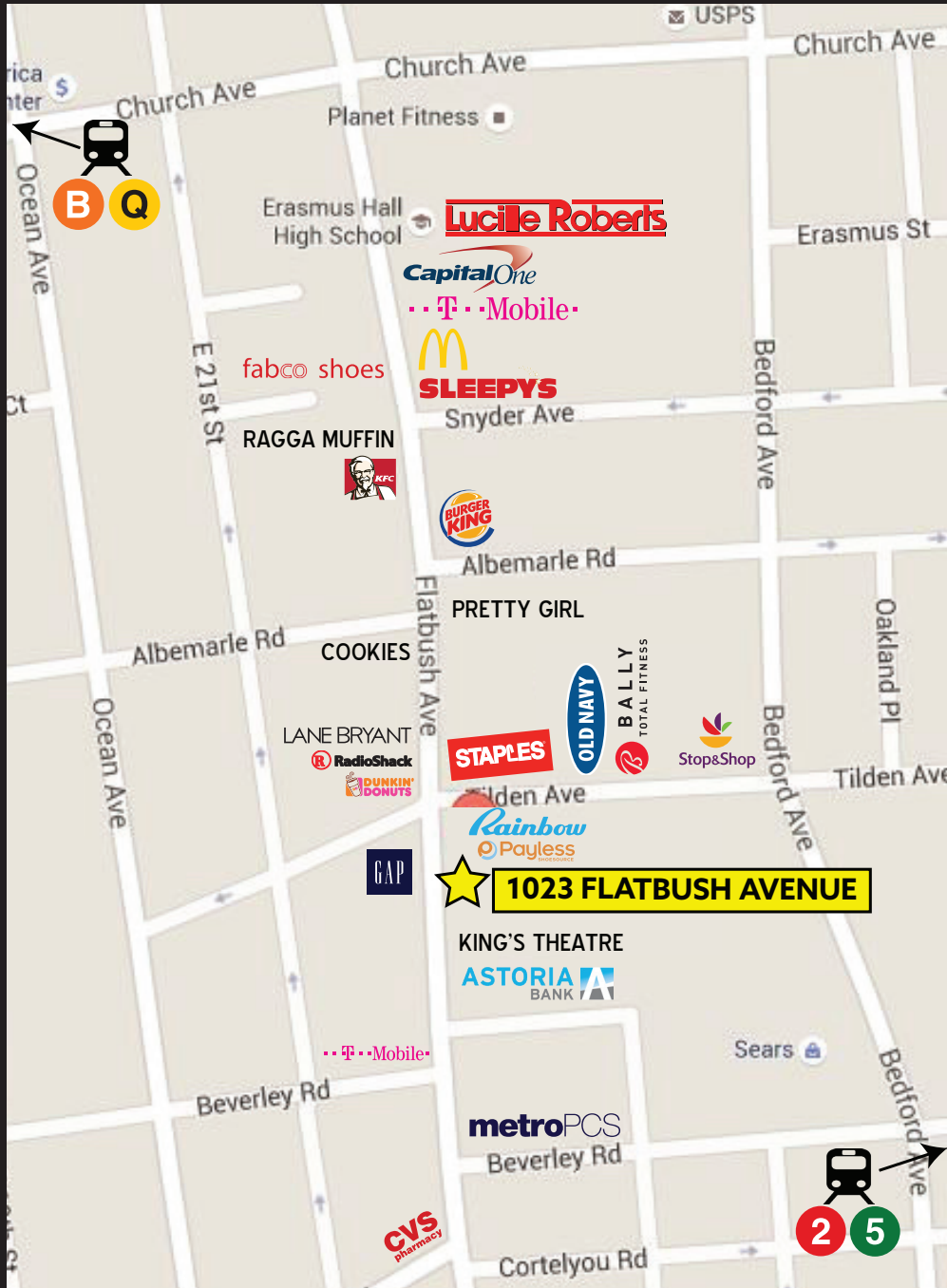
**Newmark Grubb
Knight Frank**
Retail

www.ngkf.com/retail



RETAIL SPACE AVAILABLE

1023 FLATBUSH AVENUE



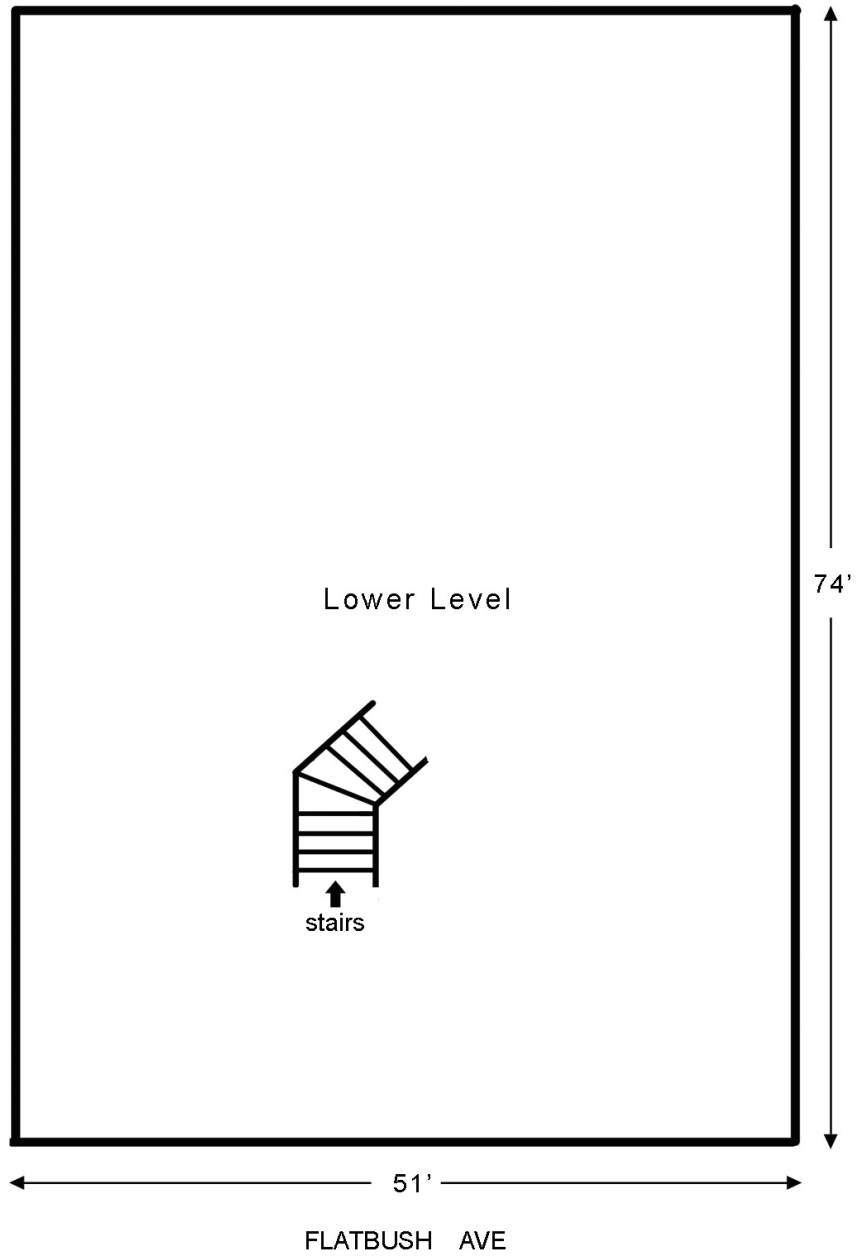
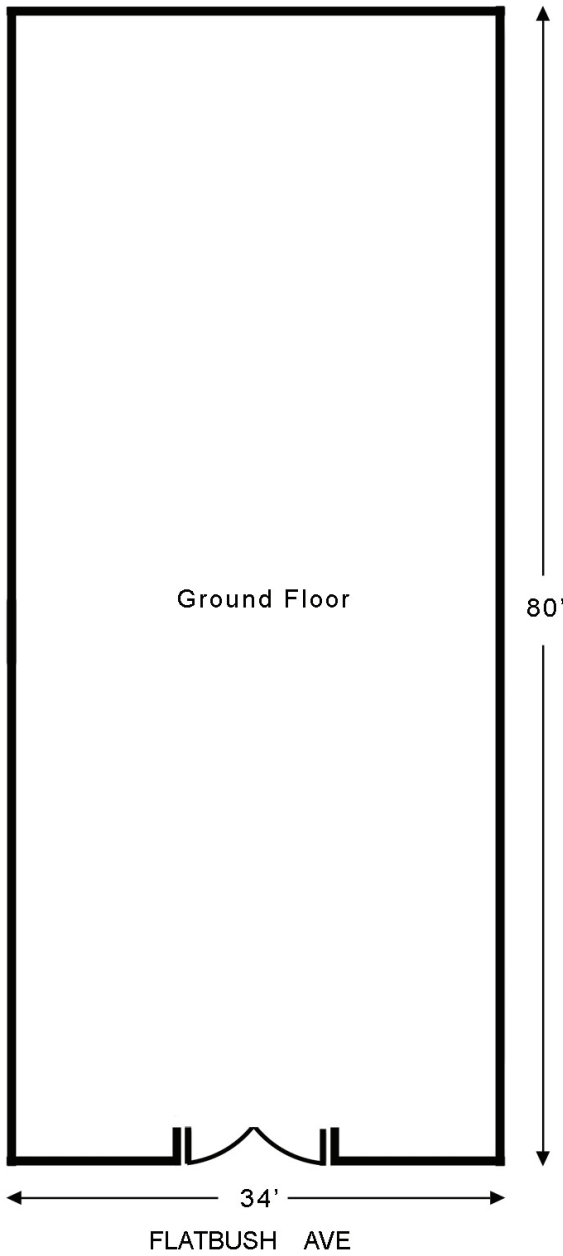
Newmark Grubb
Knight Frank
Retail

www.ngkf.com/retail



RETAIL SPACE AVAILABLE

1023 FLATBUSH AVENUE



**EXCLUSIVE
AGENTS:**

**HYMIE M. DWECK
JOSEPH COLISTA**

**212.372.2060
212.372.2191**

**hdweck@ngkf.com
jcolista@ngkf.com**

**Newmark Grubb
Knight Frank**
Retail

www.ngkf.com/retail



The information contained herein has been obtained from sources deemed reliable but has not been verified and no guarantee, warranty or representation, either express or implied, is made with respect to such information. Terms of sale or lease and availability are subject to change or withdrawal without notice.