

# THE COMMONS



EXCELLENT CLASS A  
OFFICE SPACE AVAILABLE  
FOR LEASE IN VALENCIA

## 25152 SPRINGFIELD COURT

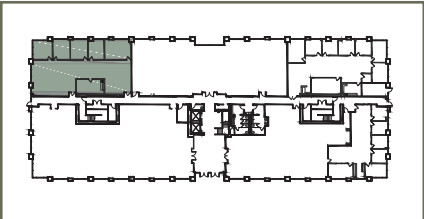
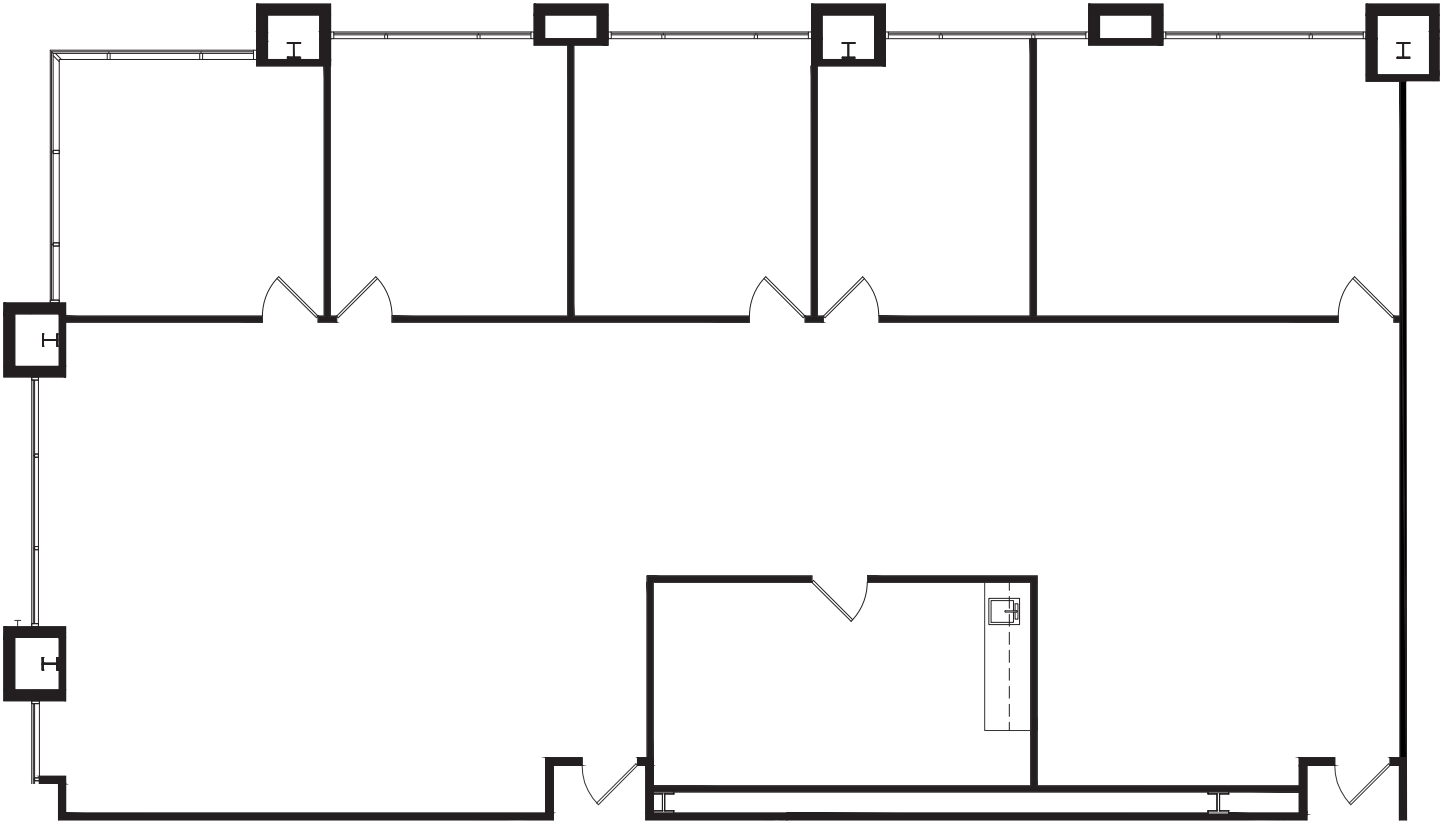
Suite 140	3,484 RSF
Suite 170	2,239 RSF
Suite 200	2,470 RSF
Suite 240	6,816 RSF
Suite 250	2,870 RSF
Suite 300	8,106 RSF
Suite 320	2,221 RSF



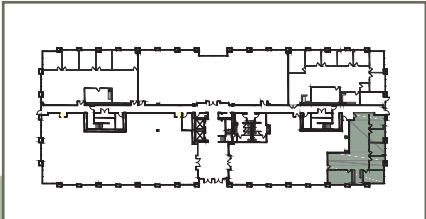
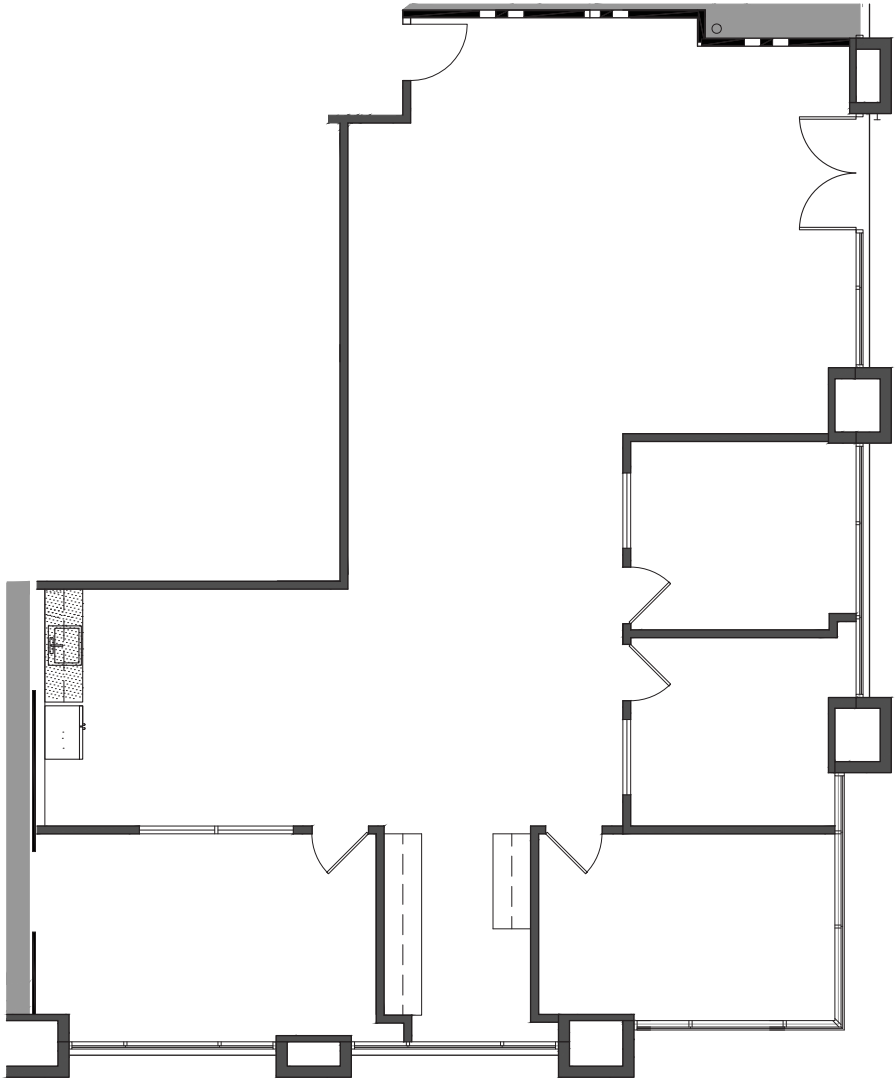
## 25124 SPRINGFIELD COURT

Suite 170	6,125 RSF
Suite 260	3,453 RSF

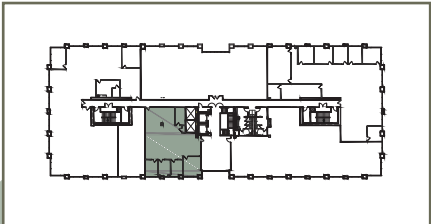
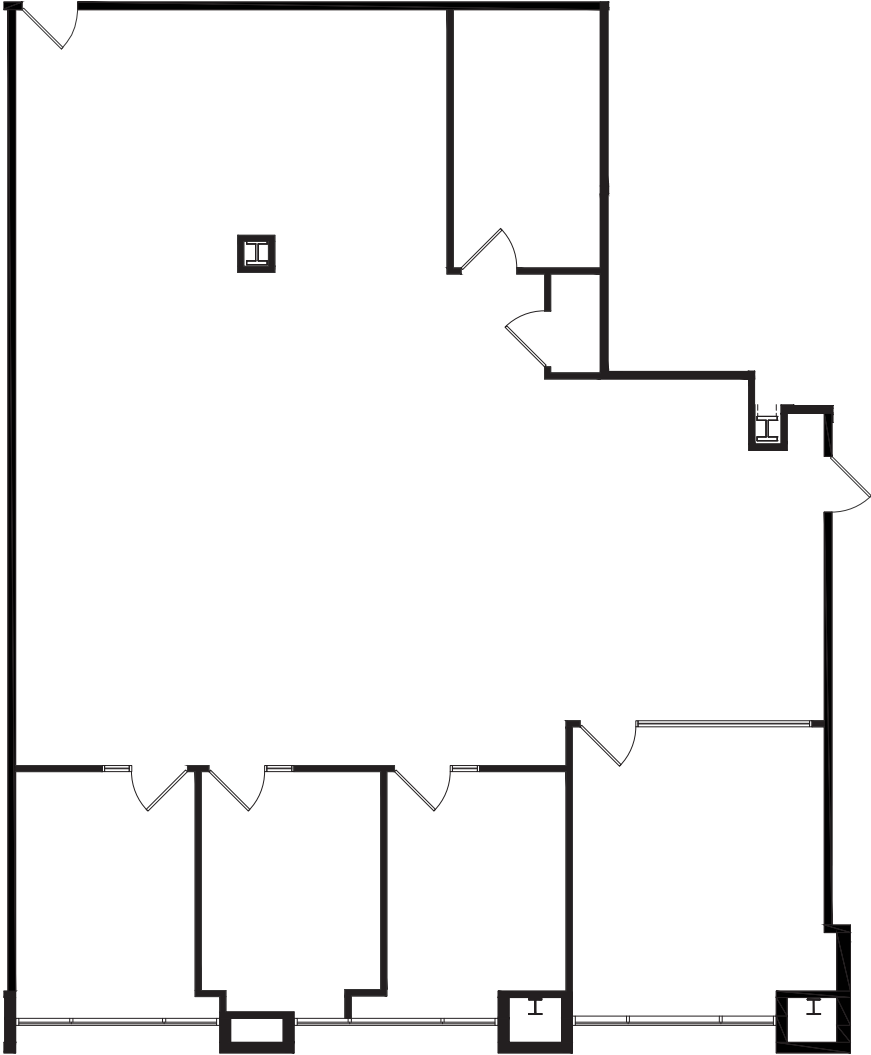
25152 SPRINGFIELD COURT  
SUITE 140 - 3,484 RSF



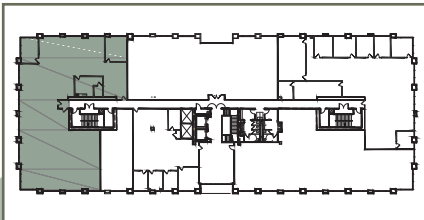
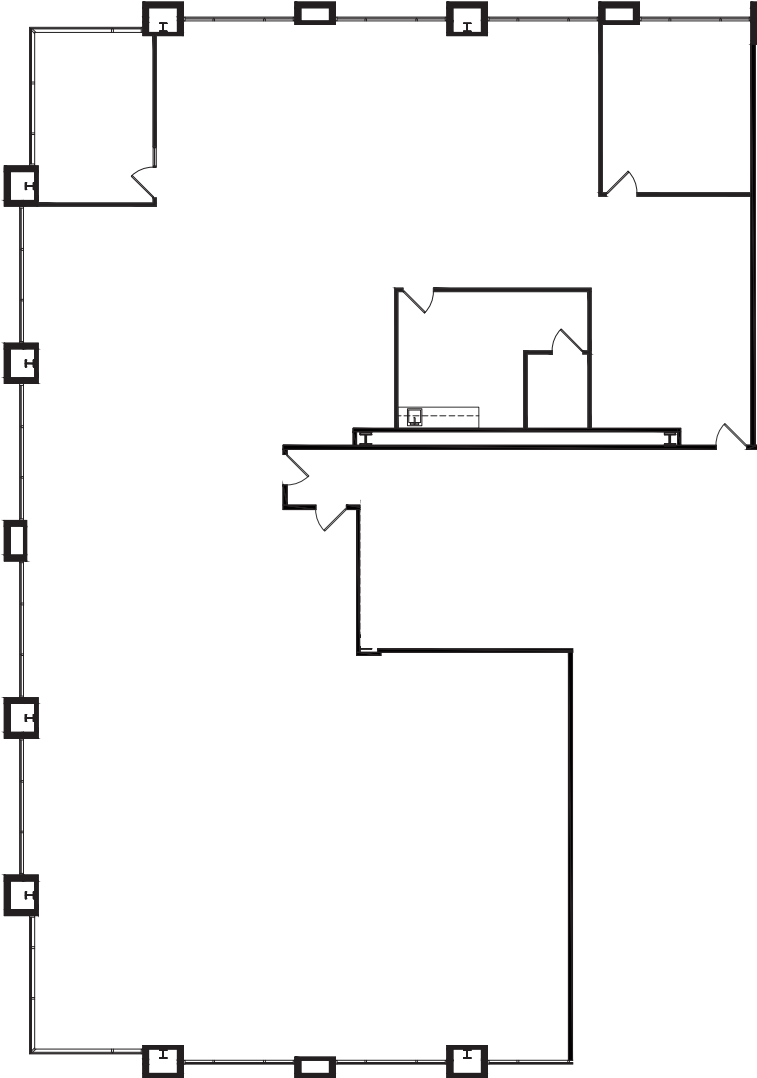
25152 SPRINGFIELD COURT  
SUITE 170 - 2,239 RSF



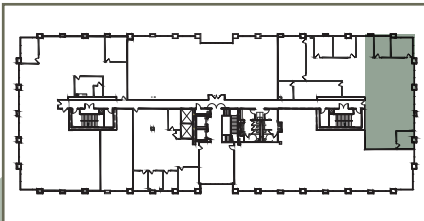
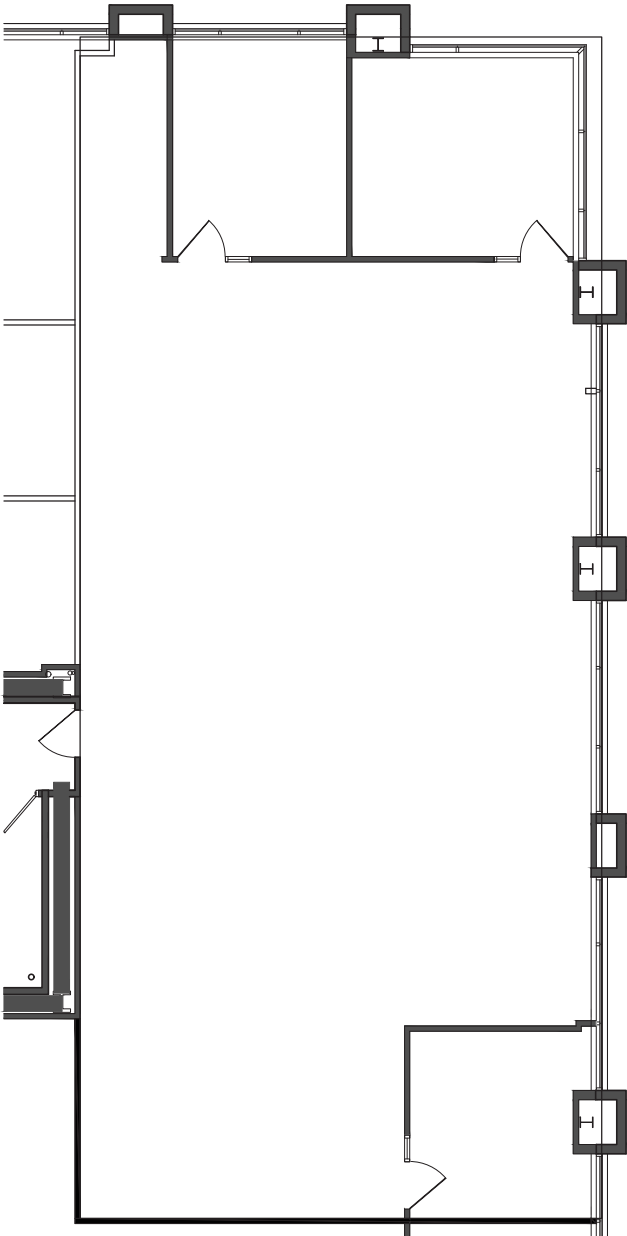
25152 SPRINGFIELD COURT  
SUITE 200 - 2,470 RSF



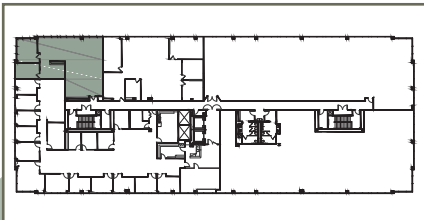
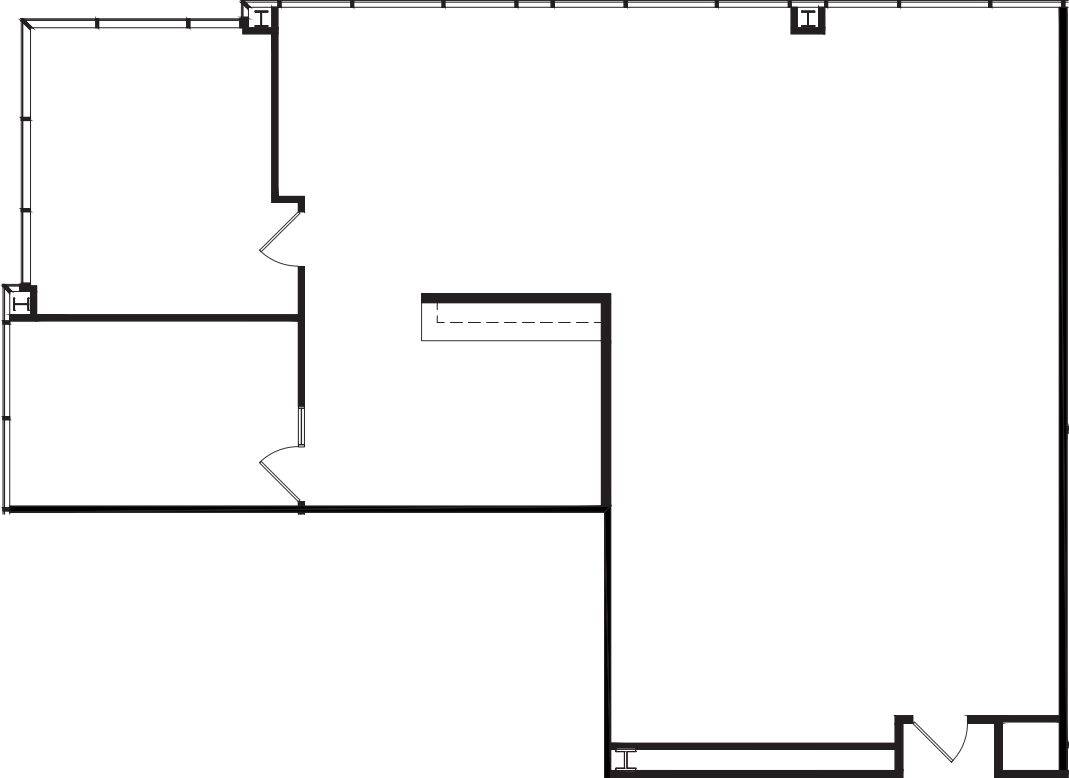
25152 SPRINGFIELD COURT  
SUITE 240 - 6,816 RSF



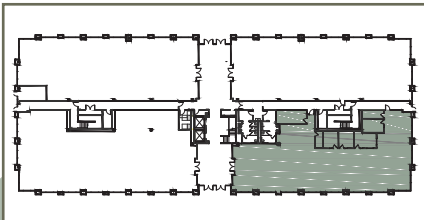
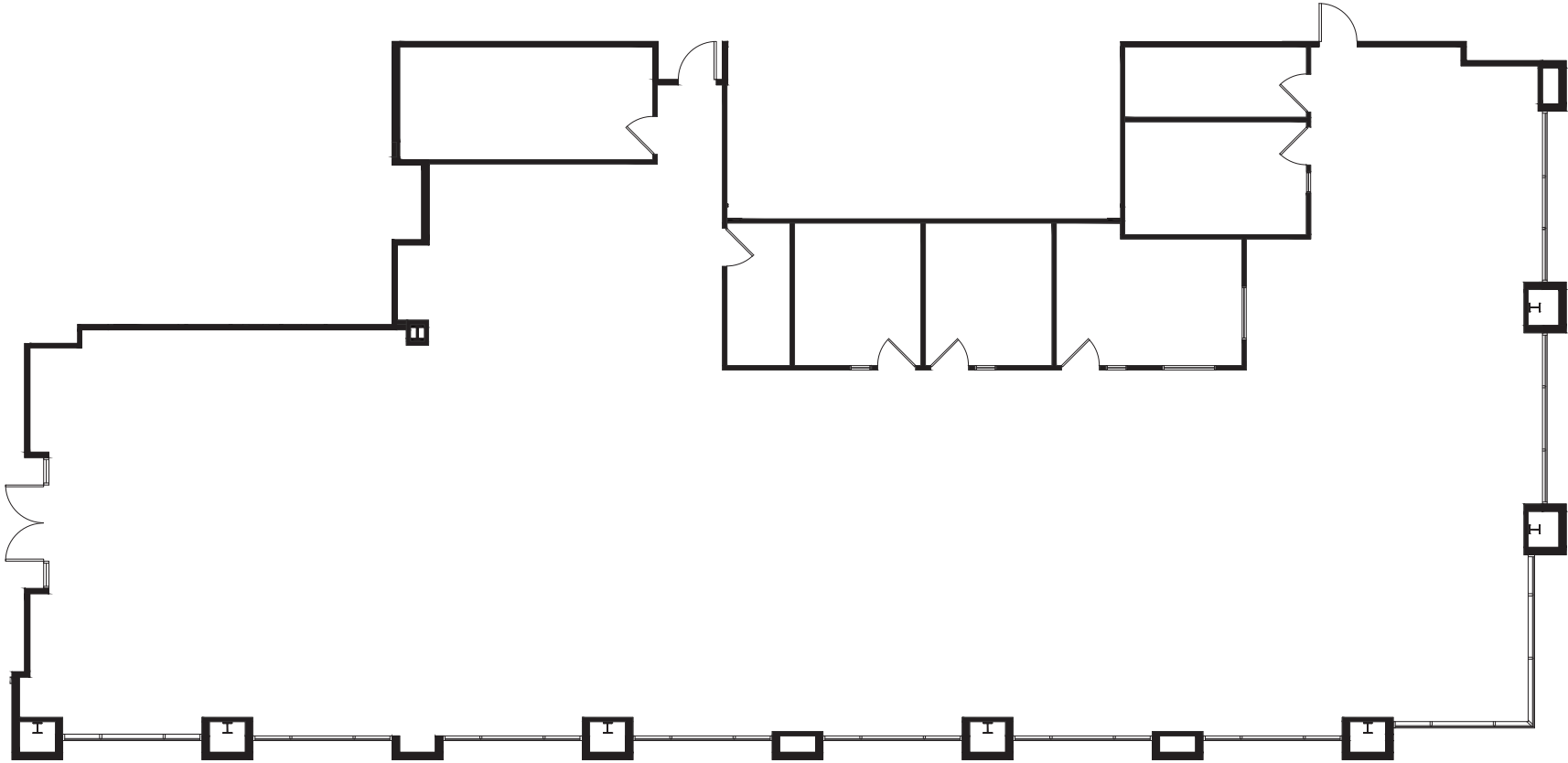
25152 SPRINGFIELD COURT  
SUITE 250 - 2,870 RSF



25152 SPRINGFIELD COURT  
SUITE 320 - 2,221 RSF

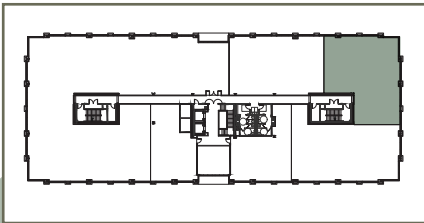
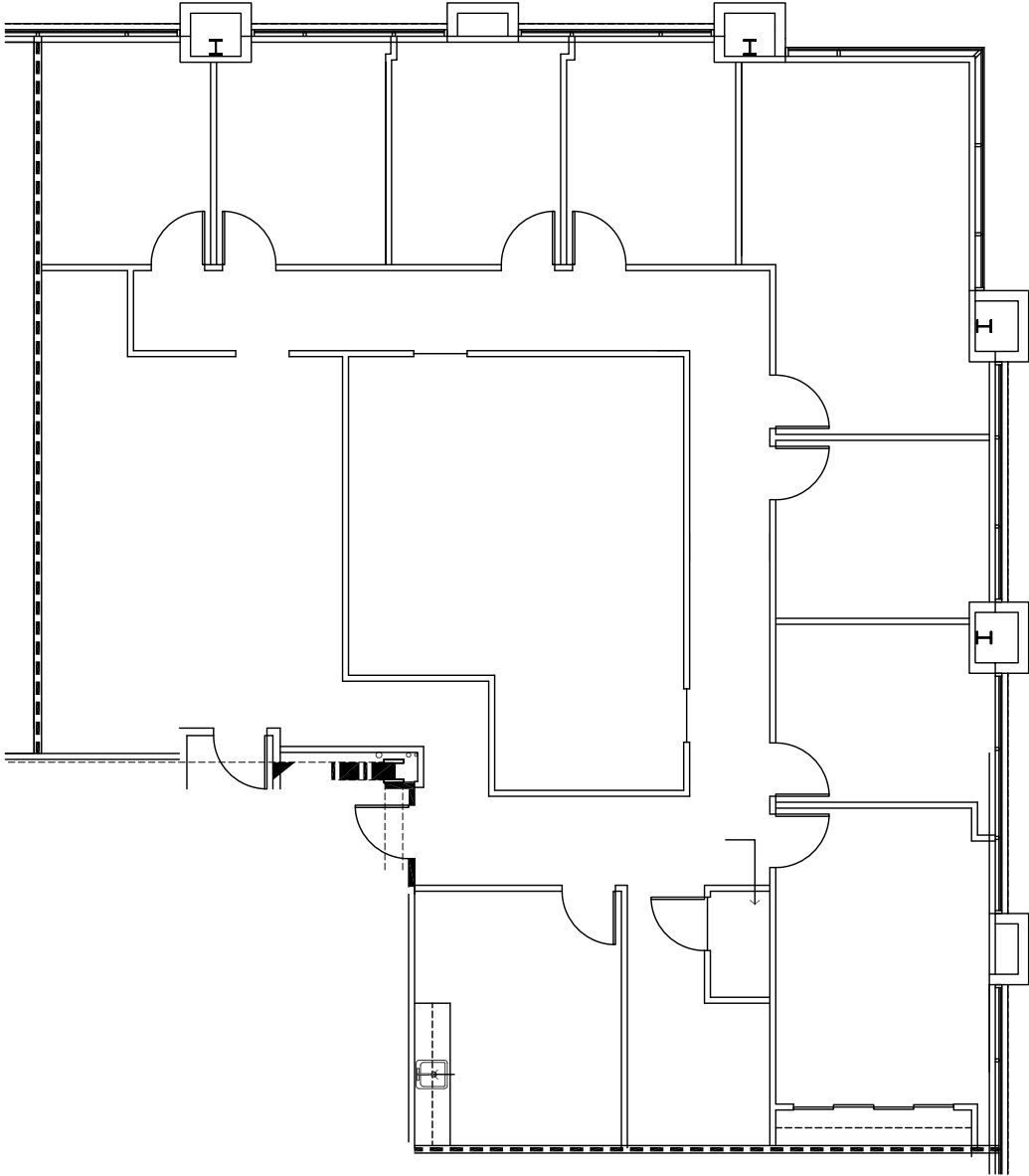


25124 SPRINGFIELD COURT  
SUITE 170 - 6,125 RSF





25124 SPRINGFIELD COURT  
SUITE 260 - 3,453 RSF



# CONTACT FOR leasing ►



## CBRE

**DOUG MARLOW**  
EXECUTIVE VICE PRESIDENT  
LIC# 00950434  
818 502 6707  
DOUG.MARLOW@CBRE.COM

**DAVID SOLOMON**  
SENIOR VICE PRESIDENT  
LIC# 01209699  
818 907 4628  
DAVID.SOLOMON@CBRE.COM

**JULIANA SAMPSON**  
SENIOR ASSOCIATE  
LIC# 01894878  
818 502 6772  
JULIANA.SAMPSON@CBRE.COM

