

600 S DOBSON RD

SUITE E-39/40 | CHANDLER, AZ 85224

MEDICAL OFFICE • FOR LEASE • 3,150 SF • \$22.75 NNN



EXCLUSIVE CONTACT:

Matt Zaccardi

D 480.966.7625

M 602.561.1339

mzaccardi@cpiaz.com



COMMERCIAL PROPERTIES INC.

Locally Owned. Globally Connected. CFR PAC International

TEMPE: 2323 W. University Drive, Tempe, AZ 85281 | 480.966.2301
SCOTTSDALE: 8777 N. Gainey Center Dr., Suite 245, Scottsdale, AZ 85258 | www.cpiaz.com

The information contained herein has been obtained from various sources. We have no reason to doubt its accuracy; however, J & J Commercial Properties, Inc. has not verified such information and makes no guarantee, warranty or representation about such information. The prospective buyer or lessee should independently verify all dimensions, specifications, floor plans, and all information prior to the lease or purchase of the property. All offerings are subject to prior sale, lease, or withdrawal from the market without prior notice. Effective 05/24/19



Building Information

Address	600 S Dobson Rd Chandler, AZ 85224
Year Built	2003
Total Square Feet	5,420
Parcel No.	303-24-206

Demographics

	1 MI	3 MI
Population	12,510	111,363
Households	6,237	45,449
Average Age	33.7	33.8
Median HH Income	\$65,664	\$69,216

The information contained herein has been obtained from various sources. We have no reason to doubt its accuracy; however, J & J Commercial Properties, Inc. has not verified such information and makes no guarantee, warranty or representation about such information. The prospective buyer or lessee should independently verify all dimensions, specifications, floor plans, and all information prior to the lease or purchase of the property. All offerings are subject to prior sale, lease, or withdrawal from the market without prior notice. Effective 05 24 19

Building Features

- Directly Across the Street from Chandler Regional Medical Center
- Reception/Waiting Room
- 10 Exam Rooms
- 2 Provider Offices
- 2 Restrooms
- Nurse Stations
- Lab Area
- Check Out Area w/ Desk
- Break Room
- Storage/Data



LEASE RATE

Lease Opportunity

SUITE	SF	RATE
Suite E-39/40	±3,150 SF	\$22.75 NNN



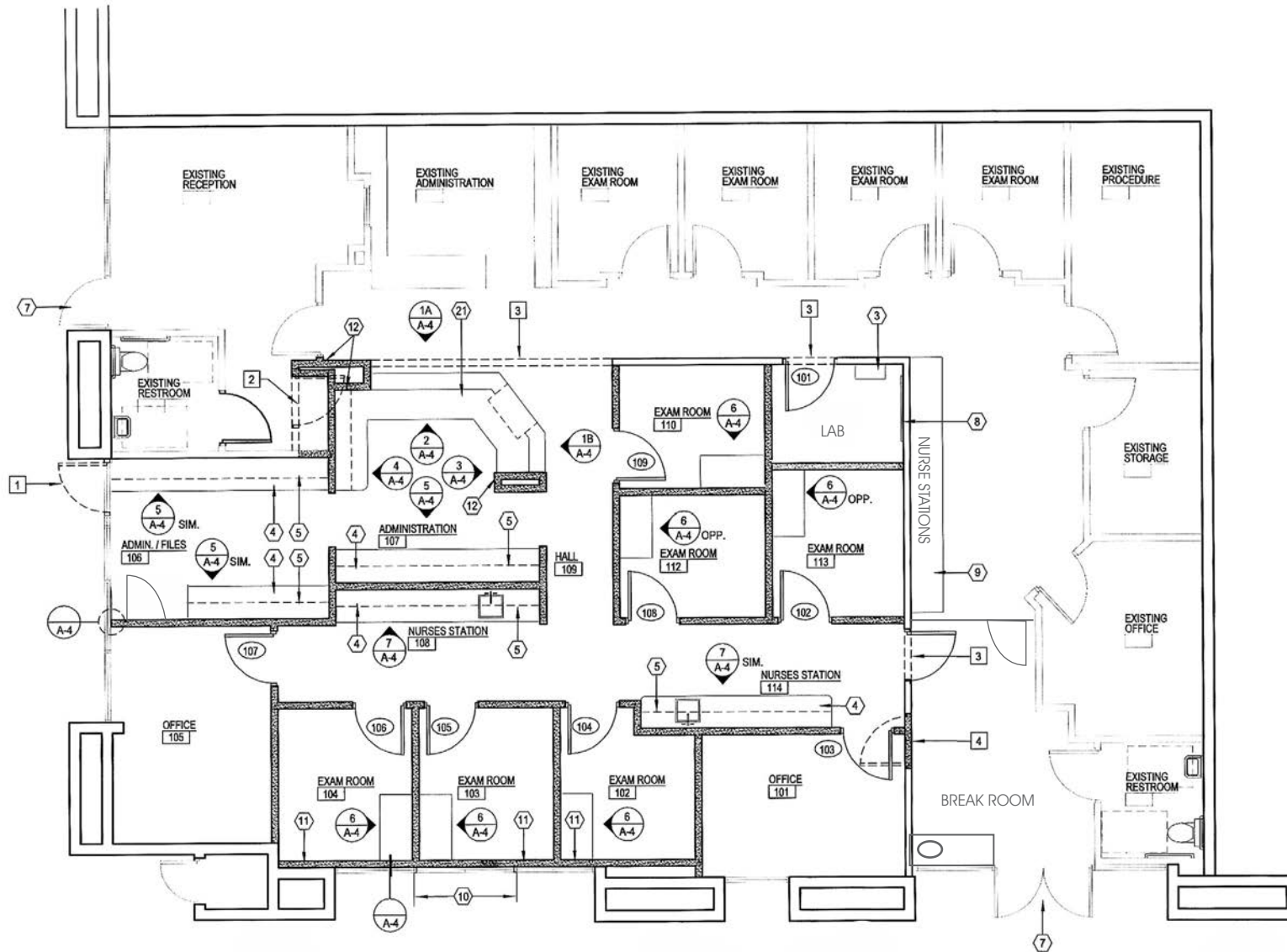
EXCLUSIVE CONTACT:

Matt Zaccardi
D 480.966.7625
M 602.561.1339
mzaccardi@cpiaz.com

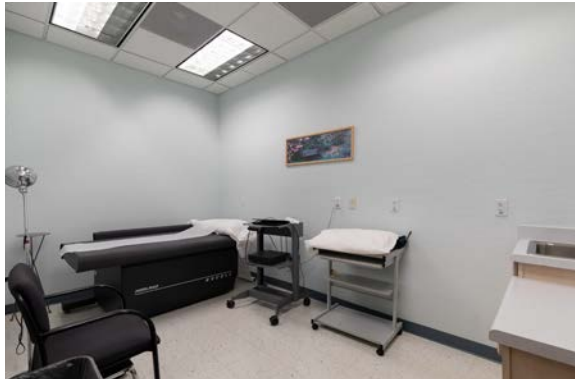




Floor Plan - Suite E-39/40: ±3,150 SF



Suite E-39/40





Location



 Dignity Health.
Chandler Regional Medical Center