

415 Crossways Park Drive

GLA: 40,300 SF
Parking: 5 : 1,000 Cars

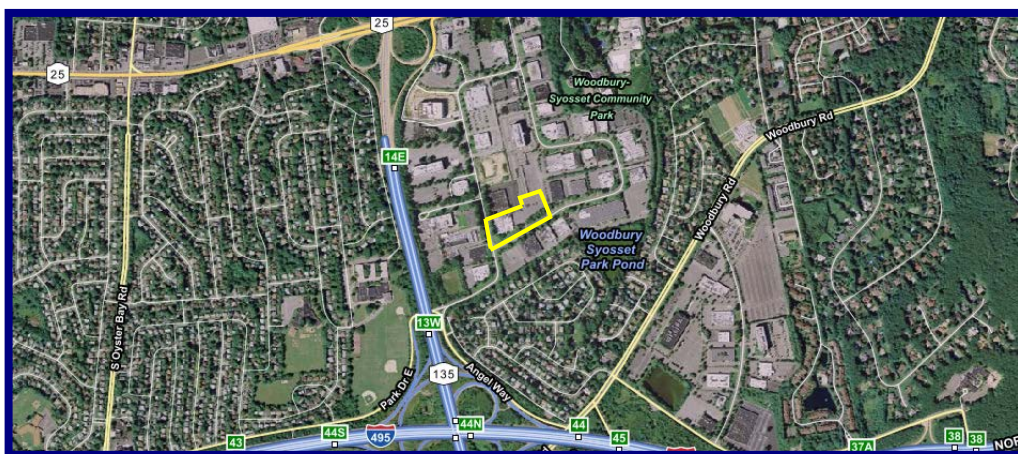
Woodbury, NY

New Ownership ~ Major Building Renovation Complete



Available: 1,886 RSF – Last Available Suite

- Comments:**
- Build-To-Suit New Installation
 - Tenant-Controlled HVAC
 - Dedicated Tenant Bathroom
 - 24 Hour / 7 Day Tenant-Controlled Access
 - 250 KW Standby Generator Access Available
 - Verizon and Lightpath in Building
 - Owned by TZ Real Estate With Management Office in Crossways Park



Floor Plan On Reverse Side Of Flyer

For Further Information and Inspection, Contact Exclusive Agent:

Franklin S. Zuckerbrot

718-512-0295

fz@s-z.com

Sholom & Zuckerbrot Realty LLC
Established 1962
Exclusive Leasing and Managing Agents



ONE FULL COMMISSION in accordance with our principal's schedule of rates and conditions (copy of which is available upon request) will be paid to the procuring broker executing our brokerage agreement who consummates a lease which has been fully executed by both parties thereto.
Kaufman Astoria Studios 35-11 35th Avenue, LIC, NY 11106 (718) 392-5959 Fax (718) 937-6546

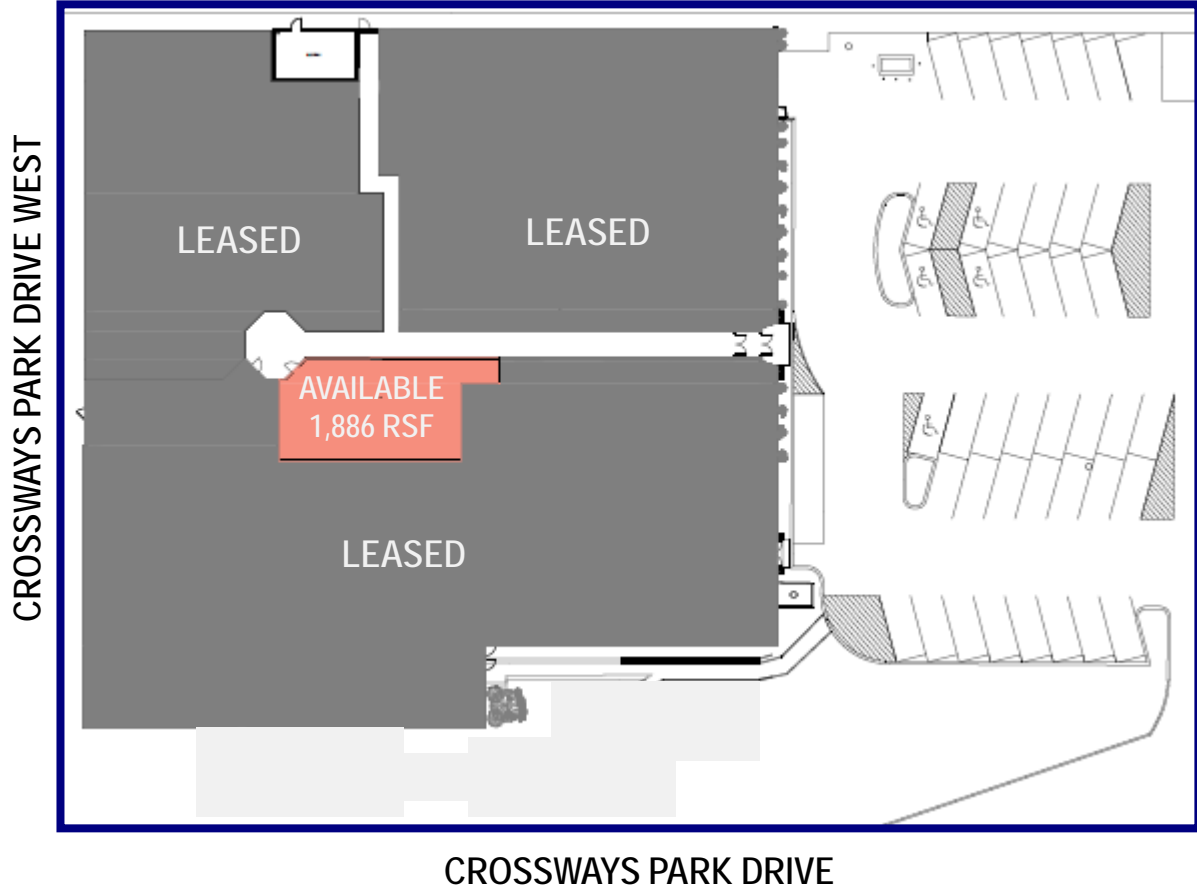
Although all information is from sources deemed reliable, and no representation is made as to the accuracy thereof, it is submitted subject to errors, omissions, changes of price, prior sale, or withdrawal without notice

415 Crossways Park Drive

Woodbury, NY

GLA: 40,300 SF
Parking: 5 : 1,000 Cars

Floor Plan



For Further Information and Inspection, Contact Exclusive Agent:
Franklin S. Zuckerbrot

718-512-0295

fz@s-z.com

Sholom & Zuckerbrot Realty LLC
Established 1962
Exclusive Leasing and Managing Agents

TZ
Real Estate
Owner - Developer

ONE FULL COMMISSION in accordance with our principal's schedule of rates and conditions (copy of which is available upon request) will be paid to the procuring broker executing our brokerage agreement who consummates a lease which has been fully executed by both parties thereto.

Kaufman Astoria Studios 35-11 35th Avenue, LIC, NY 11106 (718) 392-5959 Fax (718) 937-6546

Although all information is from sources deemed reliable, and no representation is made as to the accuracy thereof, it is submitted subject to errors, omissions, changes of price, prior sale, or withdrawal without notice