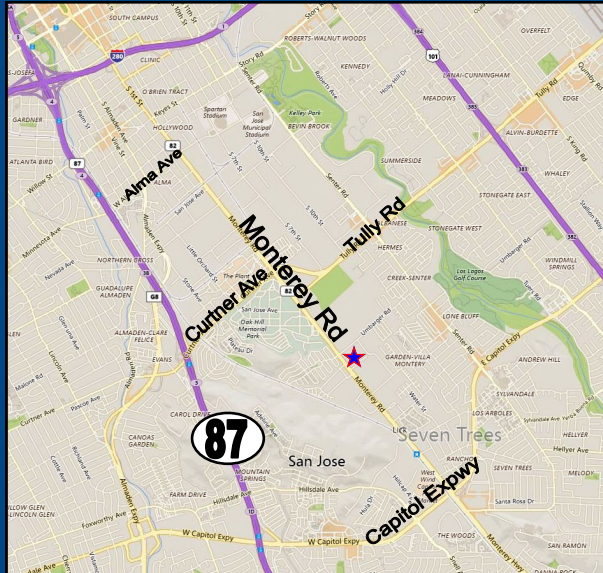




**3410 Monterey Road
San Jose,
California**

**Corner Parcel on Monterey Road
For Ground Lease or Sale
Fast Food, Auto Use, etc.**



PROPERTY INFORMATION:

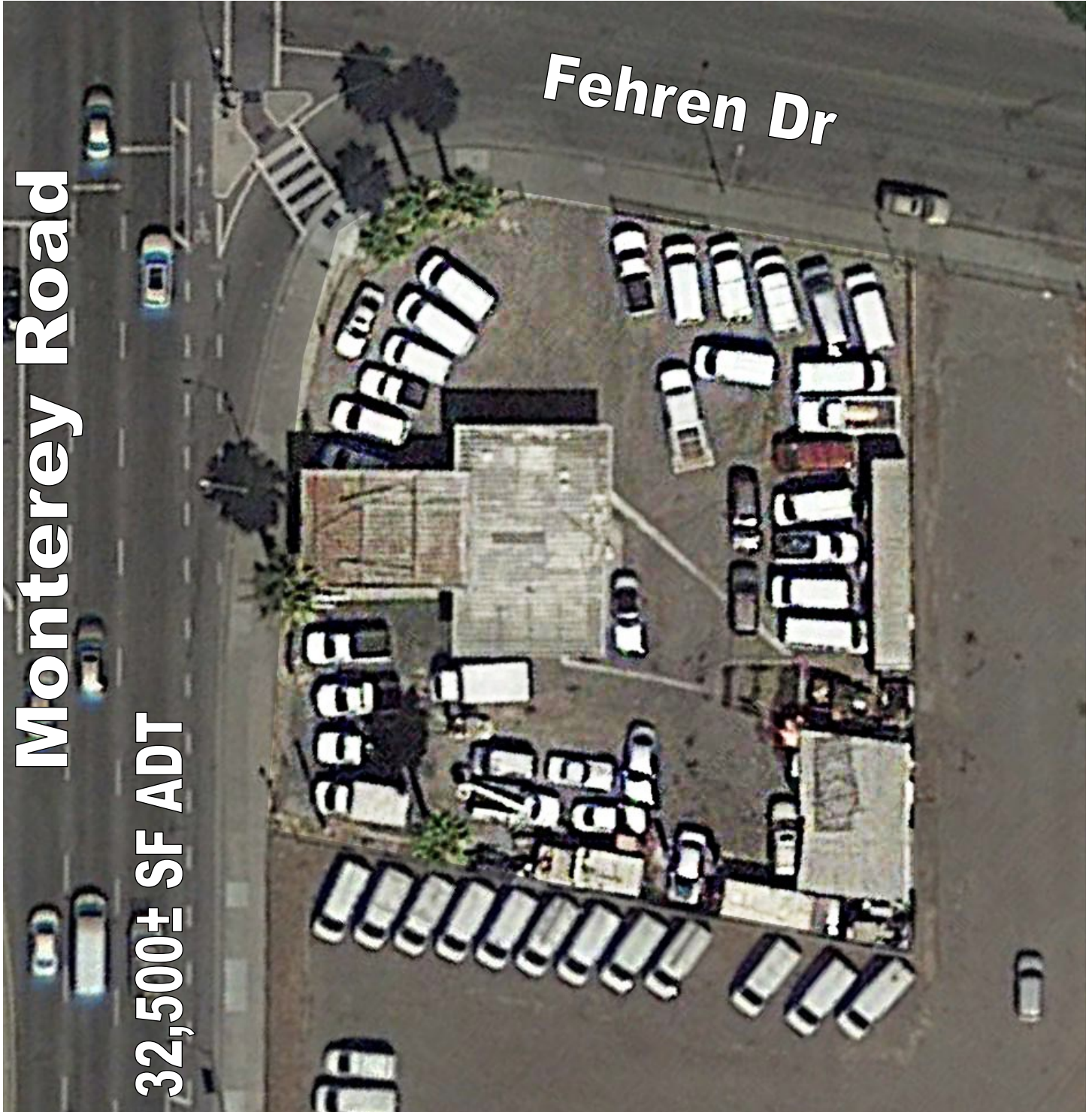
- 19,657 SF Lot
- Tremendous Opportunity and Rare Find
- Signalized Intersection
- Ingress/Egress on Both Sides
- Capitol CalTrain Stop Across The Street, Traffic To/From Capitol Expressway
- Traffic on Monterey Road: 32,500+ ADT
- Nice 1,000 SF Office Building on Lot
- Permit in Place for Auto Sales
- Contact Agent For Details

MEACHAM/OPPENHEIMER, INC.
CORFAC INTERNATIONAL
8 No. San Pedro St., Suite 300
San Jose, California 95110
Tel: 408.378.5900
Fax: 408.378.5903
www.moinc.net

FOR MORE INFORMATION CONTACT:

David Taxin
Lic. #00983163
dtaxin@moinc.net
(408) 477-2508

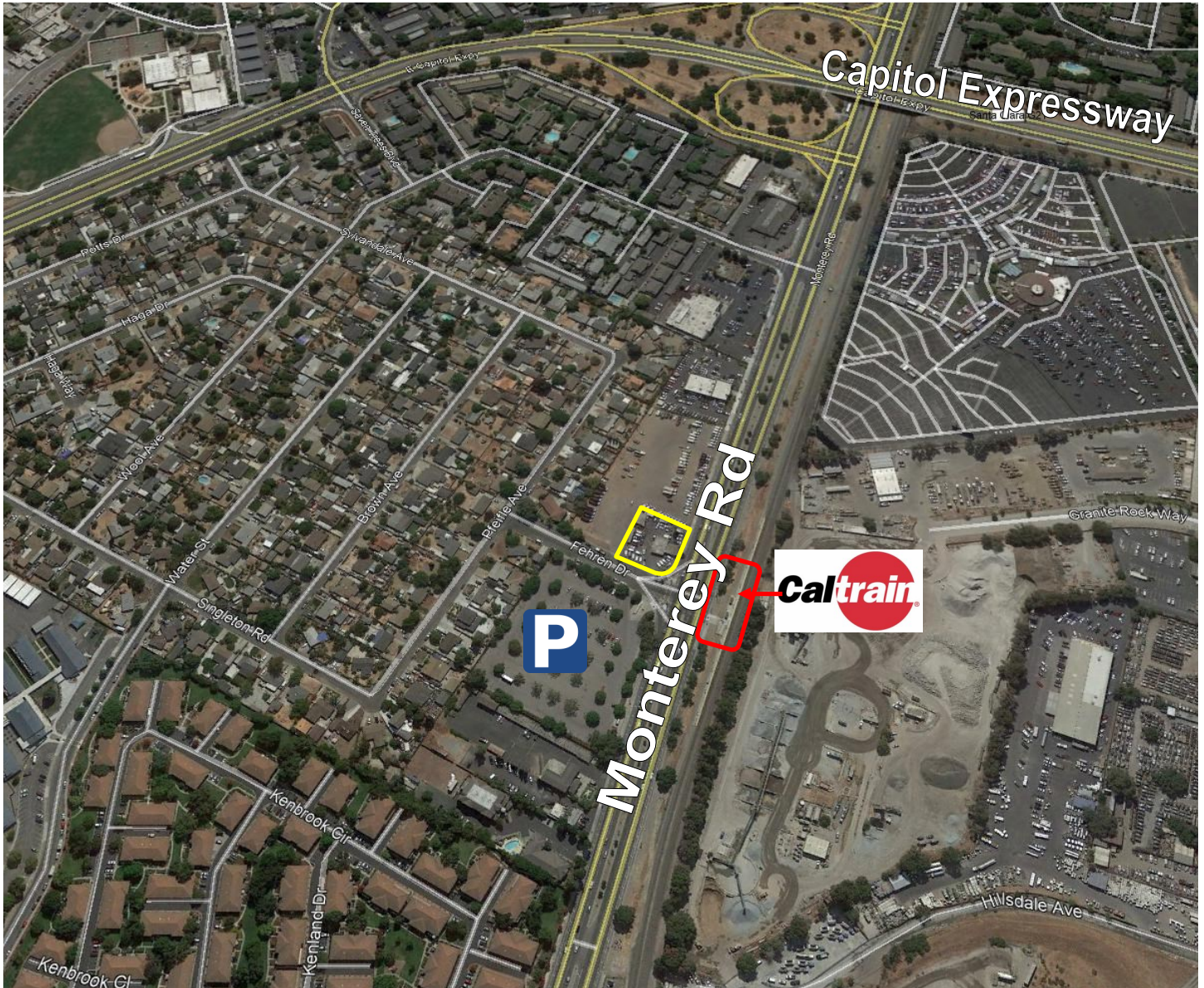
3410 Monterey Road • San Jose, California



MEACHAM/OPPENHEIMER, INC.
CORFAC INTERNATIONAL
8 No. San Pedro St., Suite 300
San Jose, California 95110
Tel: 408.378.5900
www.moinc.net

David Taxin
Lic. #00983163
dtaxin@moinc.net
(408) 477-2508

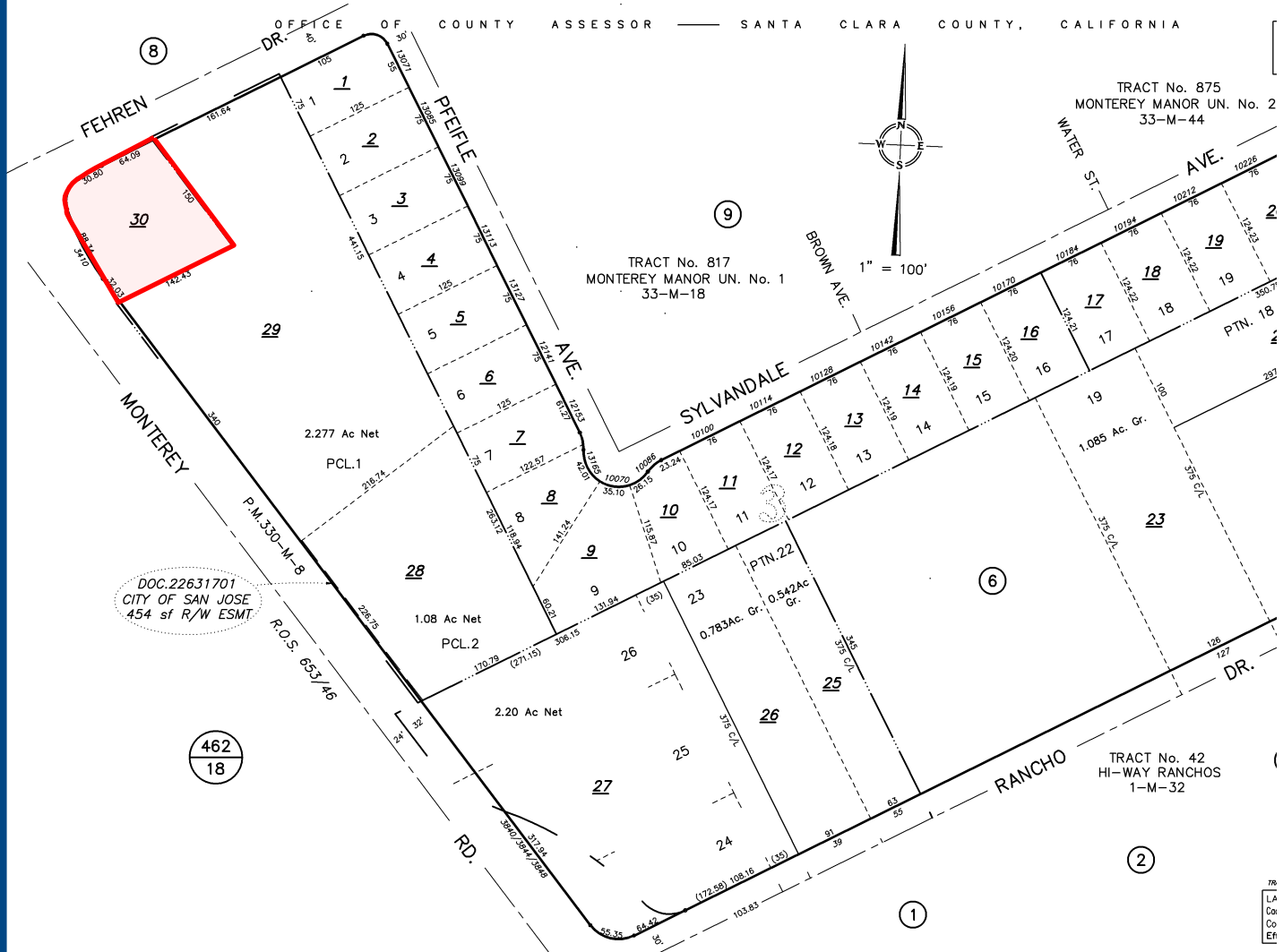
3410 Monterey Road • San Jose, California



MEACHAM/OPPENHEIMER, INC.
CORFAC INTERNATIONAL
8 No. San Pedro St., Suite 300
San Jose, California 95110
Tel: 408.378.5900
www.moinc.net

David Taxin
Lic. #00983163
dtaxin@moinc.net
(408) 477-2508

3410 Monterey Road • San Jose, California



MEACHAM/OPPENHEIMER, INC.
CORFAC INTERNATIONAL
 8 No. San Pedro St., Suite 300
 San Jose, California 95110
 Tel: 408.378.5900
 www.moinc.net

David Taxin
 Lic. #00983163
dtaxin@moinc.net
(408) 477-2508