

FOR LEASE

PROFESSIONAL OFFICES

Bel-Red Medical Building

15650 NE 24th Street
Bellevue, WA 98007

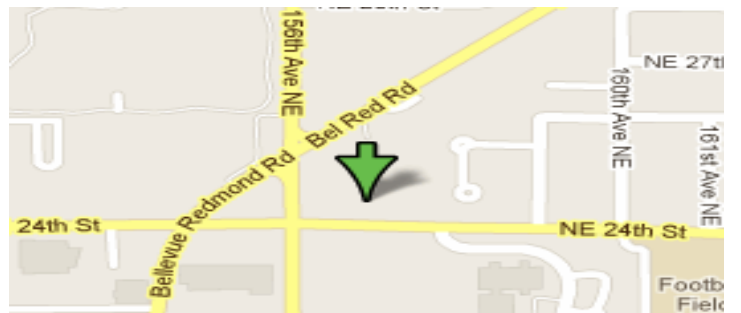


BUILDING FEATURES

- Affordable Professional Office Space
- \$18.00 SF NNN
- Current Build-Out Features:
 - Suite A: 1,416 SF

Many Nearby Shopping Amenities

- Fully Wired
- Close to Microsoft & Nintendo Campuses
- 4.5 Parking Stalls / 1,000 RSF
- Building & Monument Signage Available
 - Flexible Lease Terms
 - Quiet Park Like Setting
 - Arterial Access to SR-520 & I-405
 - Minutes from Downtown Bellevue



CCM Commercial

Commercial Real Estate Services

Cal C. Mitchell

(425) 922-2886 Cell

Cal@ccmcommercial.com

- (888) 417-1792 Office
- www.ccmcommercial.com



The information contained herein has been obtained from reliable sources but is not guaranteed. A prospective Buyer/ Tenant should verify each item relating to this property and all information contained herein.

FOR LEASE
PROFESSIONAL OFFICES

Bel-Red Medical Building

15650 NE 24th Street
Bellevue, WA 98007



CCM Commercial
Commercial Real Estate Services

Cal C. Mitchell
(425) 922-2886 Cell
Cal@ccmcommercial.com

- (888) 417-1792 Office
- www.ccmcommercial.com



The information contained herein has been obtained from reliable sources but is not guaranteed. A prospective Buyer/ Tenant should verify each item relating to this property and all information contained herein.

FOR LEASE
PROFESSIONAL OFFICES

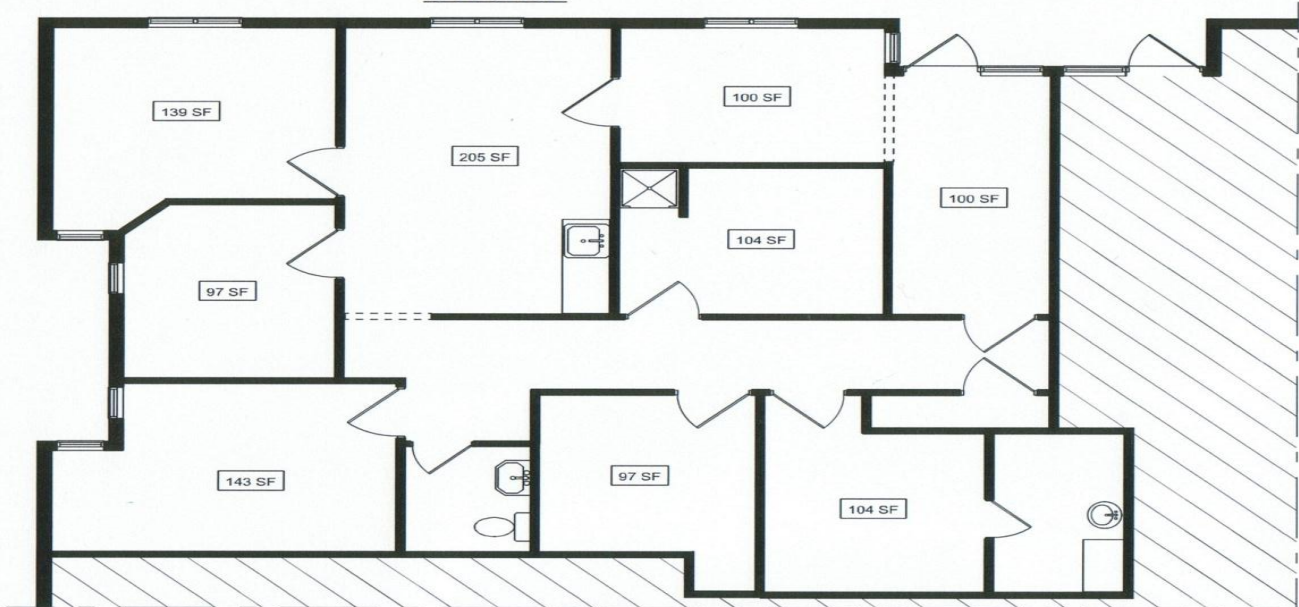
Bel-Red Medical Building

15650 NE 24th Street
Bellevue, WA 98007



15650 NE 24th ST.
BELLEVUE, WA 98008
SUITE A

1416 SF



CCM Commercial
Commercial Real Estate Services

Cal C. Mitchell

(425) 922-2886 Cell

Cal@ccmcommercial.com

• (888) 417-1792 Office

• www.ccmcommercial.com



The information contained herein has been obtained from reliable sources but is not guaranteed. A prospective Buyer/ Tenant should verify each item relating to this property and all information contained herein.