



OFFICE SPACE  
FOR LEASE

# 17924 140TH AVE NE

17924 140th Ave NE, Woodinville, WA 98072

ROBERT MESSMER, CCIM  
425.458.3902 | 206.948.1577 (c)  
rmessmer@rgmcommercial.com

JENNIFER HEYL  
425.458.3908  
jennifer@rgmcommercial.com

10423 Main Street #5, Bellevue, WA 98004  
425.452.3052 | rgmcommercial.com



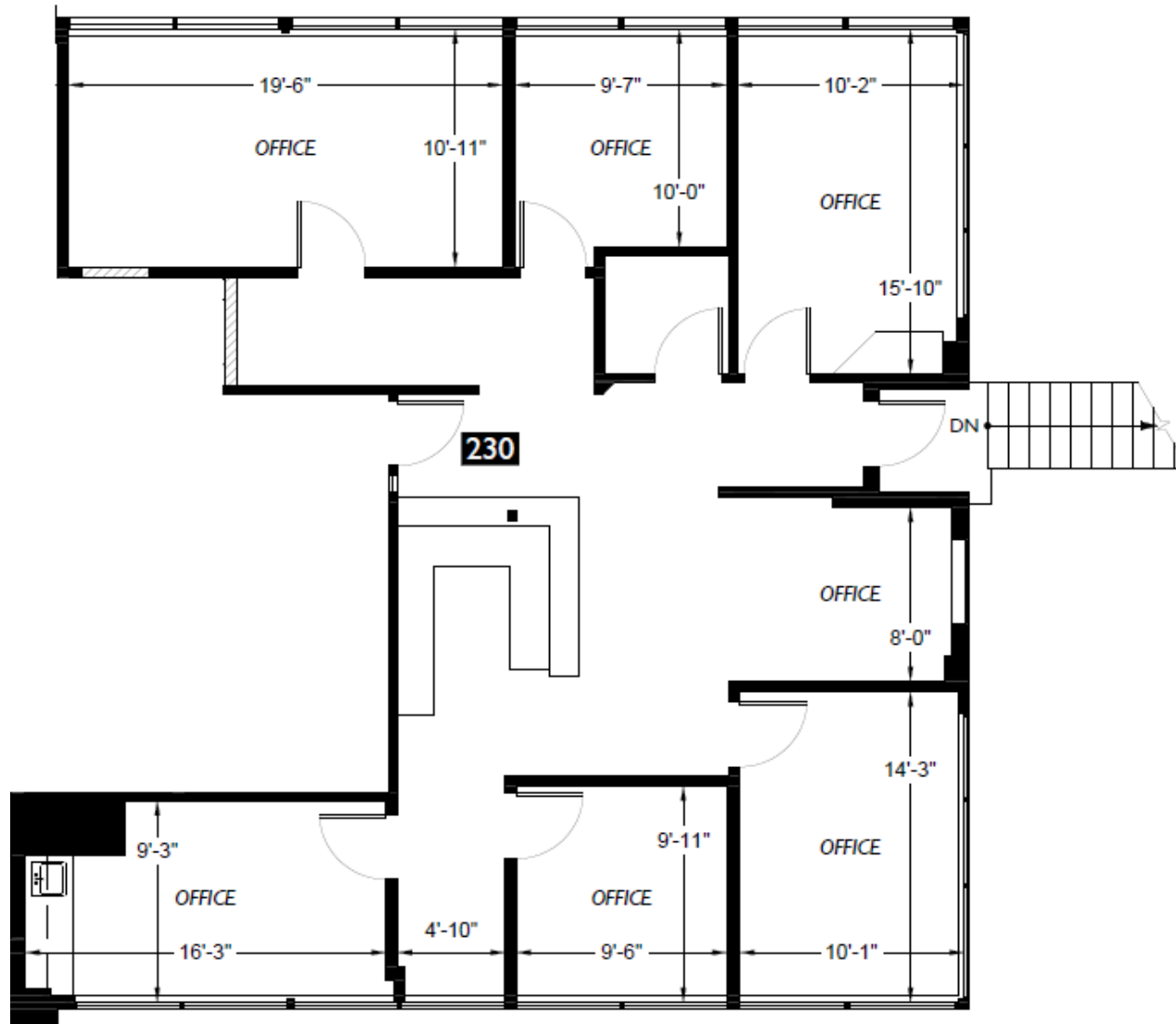
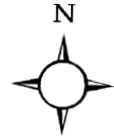
**Office Building in Prime Woodinville location**

<b>Suite 230</b>	1,797 SF
<b>Bldg Rental Rate</b>	\$28.00 per SF NNN (2024 Est. \$14.32/SF)
<b>Suite Details</b>	Suite has 4 private offices, a conference room, reception & a kitchenette/work room
<b>Signage</b>	Prominent monument & building signage off of 140th Ave NE
<b>Stories</b>	2 stories of office
<b>Parking</b>	Free surface parking; 4.0   1,000 SF
<b>Year Built</b>	2000; 2022 upgrades
<b>Building Upgrades</b>	Significant exterior & interior upgrades in 2023
<b>Communication/ Fiber</b>	Comcast Business, Comcast & Ziplly Fiber
<b>Amenities</b>	Great downtown Woodinville location. On bus line & very close to the park & ride. Within steps of Woodinville Town Center & minutes away from all of the downtown amenities.











ROBERT MESSMER, CCIM  
425.458.3902 | 206.948.1577 (c)  
rmessmer@rgmcommercial.com

JENNIFER HEYL  
425.458.3908  
jennifer@rgmcommercial.com

425.452.3052 | [rgmcommercial.com](http://rgmcommercial.com)

The information contained herein has been received from sources we deem reliable. While we have no reason to doubt its accuracy, we do not guarantee it. You are advised to independently verify all information.





ROBERT MESSMER, CCIM  
 425.458.3902 | 206.948.1577 (c)  
 rmessmer@rgmcommercial.com

JENNIFER HEYL  
 425.458.3908  
 jennifer@rgmcommercial.com

425.452.3052 | rgmcommercial.com

The information contained herein has been received from sources we deem reliable. While we have no reason to doubt its accuracy, we do not guarantee it. You are advised to independently verify all information.

