

FOR LEASE

Wetmore Building
2731 Wetmore Ave, Everett, WA



Class A Everett CBD Office Building - Under New Ownership

Building recently purchased - motivated landlord

Located just north of Snohomish County Courthouse

Substantial glass line providing natural light

Convenient access to I-5 (North/South)

Ample parking in close proximity

Walking distance to restaurants, residential, and retail amenities

Professional tenant base includes engineering, legal, financial and medical sectors

Downtown Everett bus station/public transportation nearby

Market ready spaces completed for immediate occupancy

Attractive Rental rates: \$16.00 / SF, plus NNN

CONTACT

Matthew Hagen, SIOR
Senior Vice President, Partner
425.283.5782
mhagen@kiddermathews.com

Matthew P. Henn
Senior Vice President, Partner
425.450.1108
mhenn@kiddermathews.com



Wetmore Building

2731 Wetmore Ave, Everett, WA

Availabilities

SUITE 203

±1,532 RSF

SUITE 301

±4,795 RSF
(divisible)

SUITE 402

±2,538 RSF



Availabilities

SUITE 203

Great location off main lobby

SUITE 301

Divisible to ±1,200 SF; entrance directly off elevator

SUITE 402

Entrance directly off elevator

AMENITIES

Walking distance to several hotels, restaurants, and retail facilities within minutes



Matthew Hagen, SIOR
Senior Vice President, Partner
425.283.5782
mhagen@kiddermathews.com

Matthew P. Henn
Senior Vice President, Partner
425.450.1108
mhenn@kiddermathews.com

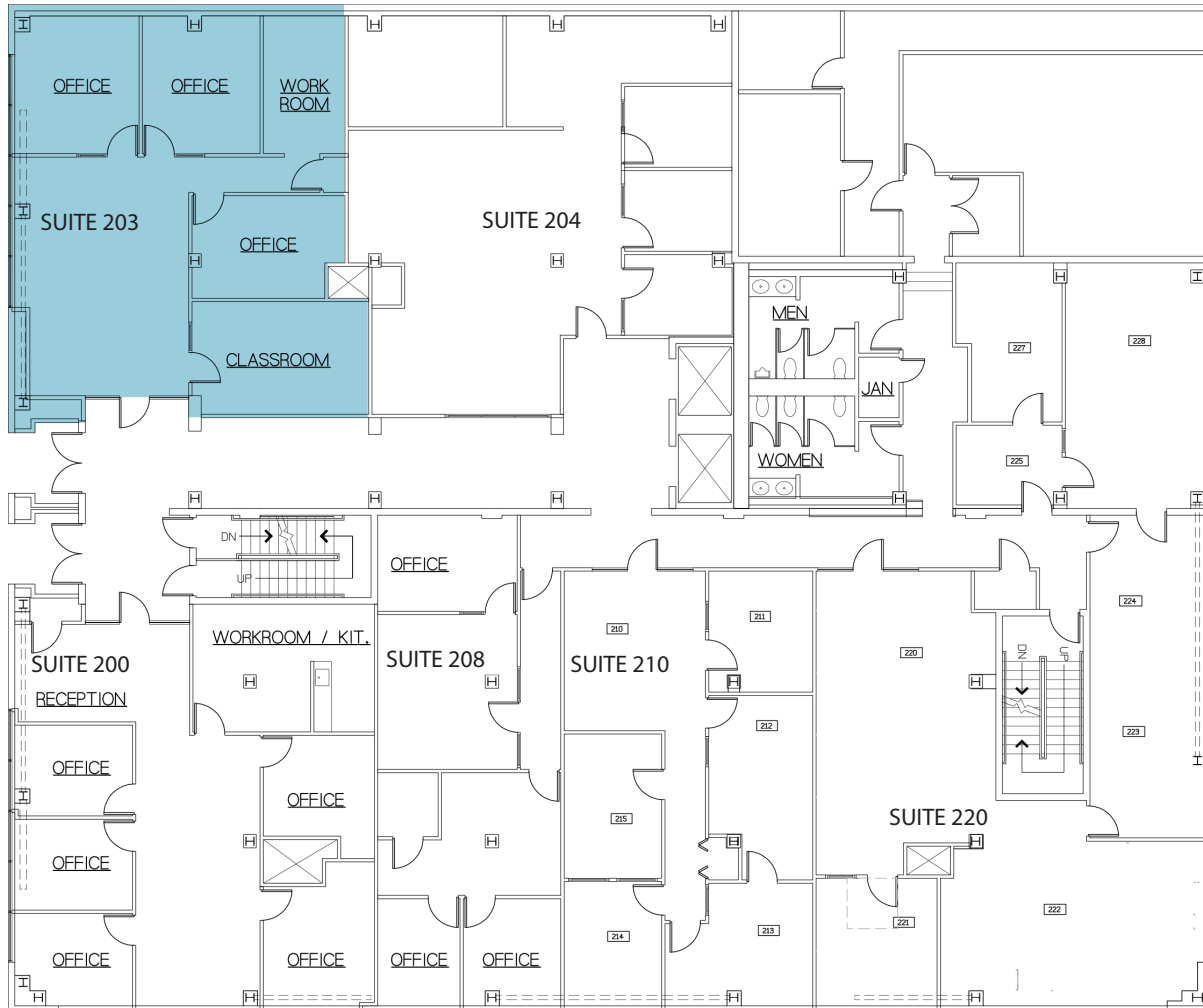
kiddermathews.com



Wetmore Building

2731 Wetmore Ave, Everett, WA

2nd Floor



SUITE 203

±1,532 SF

Matthew Hagen, SIOR
Senior Vice President, Partner
425.283.5782
mhagen@kiddermathews.com

Matthew P. Henn
Senior Vice President, Partner
425.450.1108
mhenn@kiddermathews.com

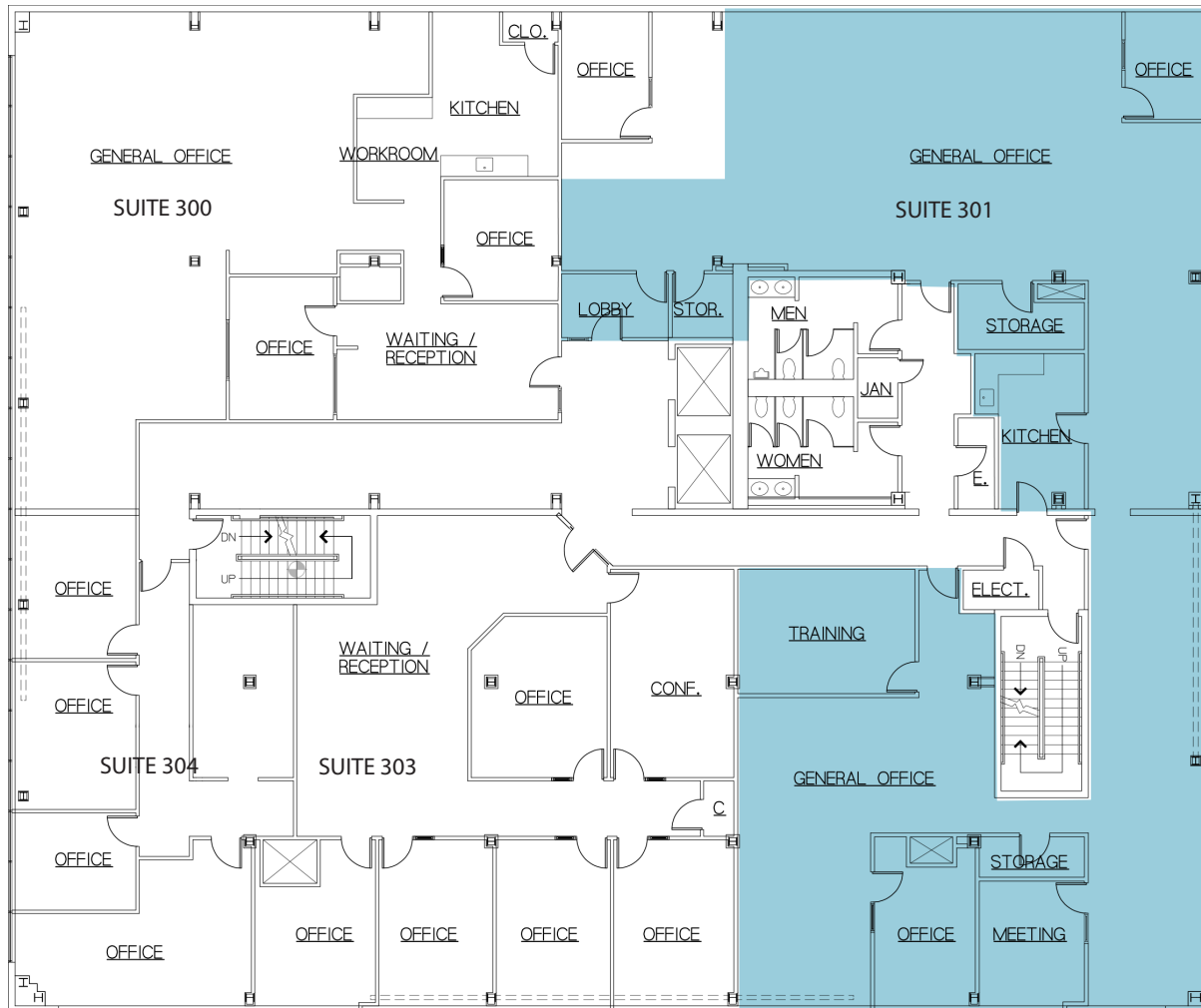
kiddermathews.com



Wetmore Building

2731 Wetmore Ave, Everett, WA

3rd Floor



SUITE 301

±4,795 SF

Matthew Hagen, SIOR
Senior Vice President, Partner
425.283.5782
mhagen@kiddermathews.com

Matthew P. Henn
Senior Vice President, Partner
425.450.1108
mhenn@kiddermathews.com

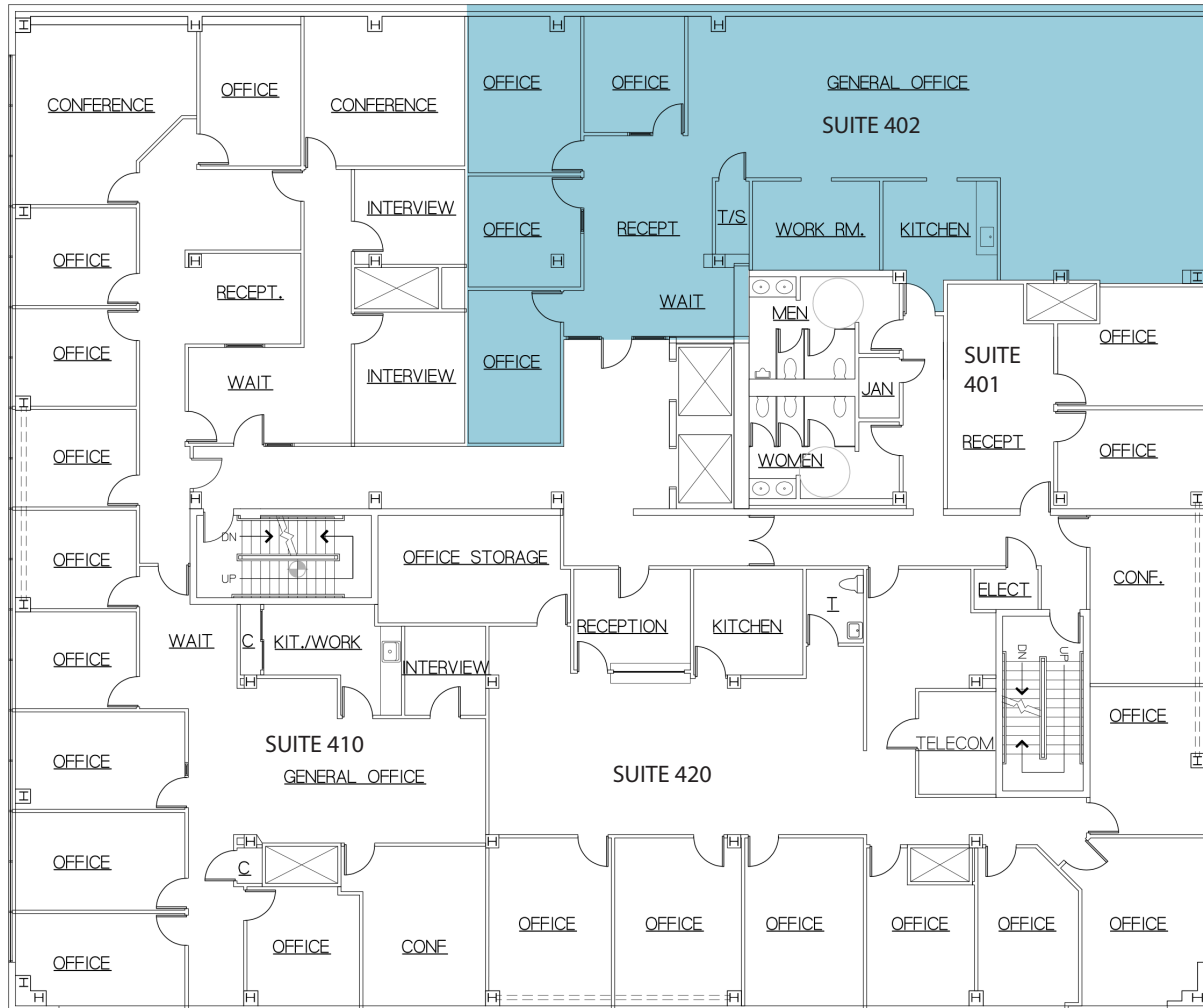
kiddermathews.com



Wetmore Building

2731 Wetmore Ave, Everett, WA

4th Floor



SUITE 402

±2,538 SF

Matthew Hagen, SIOR
Senior Vice President, Partner
425.283.5782
mhagen@kiddermathews.com

Matthew P. Henn
Senior Vice President, Partner
425.450.1108
mhenn@kiddermathews.com

kiddermathews.com



Wetmore Building

2731 Wetmore Ave, Everett, WA



Matthew Hagen, SIOR
Senior Vice President, Partner
425.283.5782
mhagen@kiddermathews.com

Matthew P. Henn
Senior Vice President, Partner
425.450.1108
mhenn@kiddermathews.com

kiddermathews.com

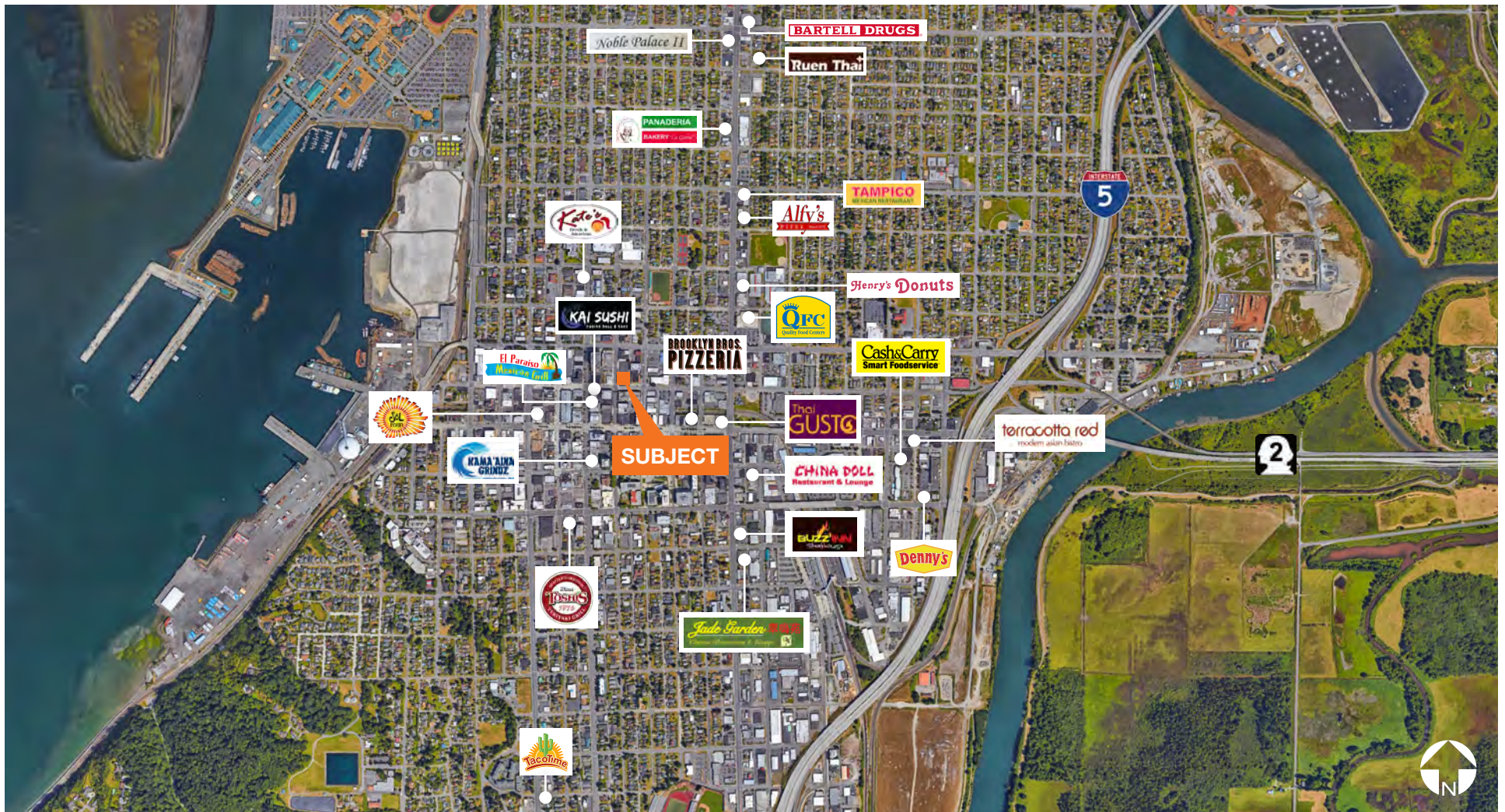


This information supplied herein is from sources we deem reliable. It is provided without any representation, warranty or guarantee, expressed or implied as to its accuracy. Prospective Buyer or Tenant should conduct an independent investigation and verification of all matters deemed to be material, including, but not limited to, statements of income and expenses. Consult your attorney, accountant, or other professional advisor.

Wetmore Building

2731 Wetmore Ave, Everett, WA

Everett Amenities Map



Matthew Hagen, SIOR
Senior Vice President, Partner
425.283.5782
mhagen@kiddermathews.com

Matthew P. Henn
Senior Vice President, Partner
425.450.1108
mhenn@kiddermathews.com

kiddermathews.com

