

# **STONE MOUNTAIN PLAZA**

## ***FEATURING***

### **STONE MOUNTAIN CENTER**

9801 Xenia Ave N                      Ready for Occupancy  
Brooklyn Park, MN 55443      September 30th, 2020

### **STONE MOUNTAIN PROFESSIONAL**

9985 Xenia Ave N                      Construction TBD  
Brooklyn Park, MN 55443

**Spaces Available**

**Call 763-600-6030 to inquire.**

# BROOKLYN PARK, MN



**STONE  
MOUNTAIN  
PLAZA**



Zane Avenue





# STONE MOUNTAIN PLAZA



Opened June 2018



Opened February 2019



Opened February 2020

**Stone Mountain Center**

Ready for Occupancy  
September 30, 2020  
\$25 / sq. ft. + Tax & CAM

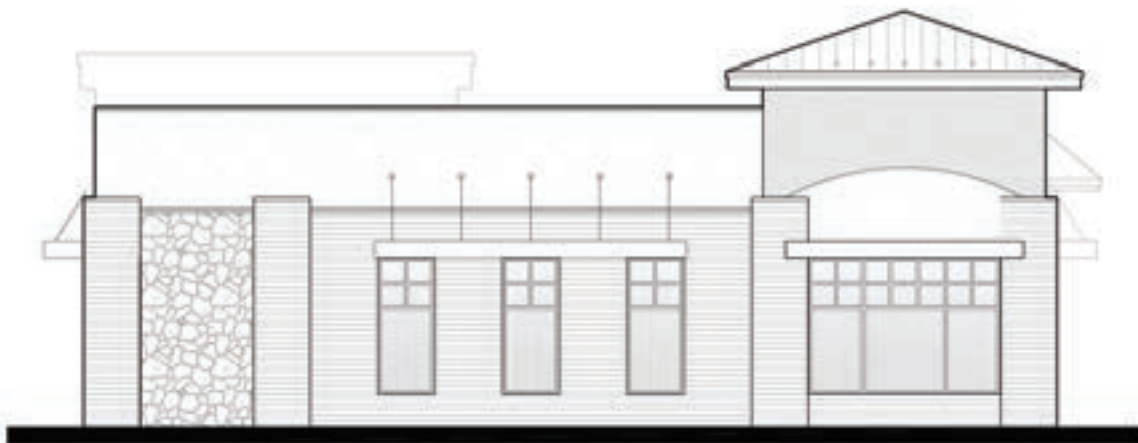
**Stone Mountain Professional**

Construction TBD

# STONE MOUNTAIN PROFESSIONAL



**South Elevation**

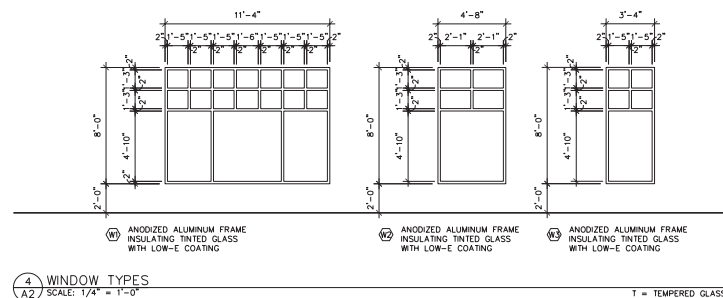


**West Elevation**



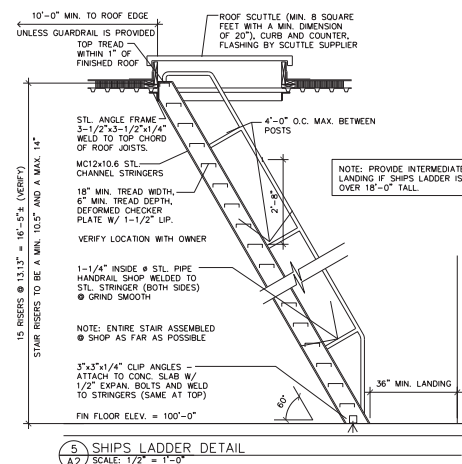
**North Elevation**





NOTES:

1. ALL DOOR HARDWARE TO BE SPECIFIED & PROVIDED BY CONTRACTOR
2. ALL EXIT HARDWARE SHALL NOT REQUIRE TIGHT GRASPING, PINCHING, OR TWISTING OF THE WRIST. MOUNT HARDWARE BETWEEN 34"-48" (ANSI A117.1-4.20.4.2.6)
3. PROVIDE A FIRE KNEX BRAND FIRE DEPARTMENT KEY BOX AS SPECIFIED BY THE FIRE MARSHAL
4. THE MAIN EXIT IS ALLOWED TO HAVE A KEYPAD LOCK PROVIDED THAT THE LOCKING DEVICE IS READILY DISTINGUISHABLE AS LOCKED AND A SIGN WITH "1. LOCKING LETTERS IS POSTED ON THE EGRESS SIDE OF THE DOOR TO REMAIN UNLOCKED WHEN BUILDING IS OCCUPIED". (IBC 1008.1.9.3)



**STONE MOUNTAIN  
PROFESSIONAL**  
Stone Mountain Plaza - Brooklyn Park, Minnesota

Copyright 2017 Leonard Kamper Architects, P.A.	
Project Designer: L. SCHMIDT	
Drawn By: LLS	
Checked By: LL	
Revisions	
7/24/17	CITY SUBMITTAL
8/17/17	ISSUE
9/12/17	REV IN PROGRESS
9/20/17	REVISION

**FLOOR PLAN**  
**DOOR TYPES**  
**FRAME TYPES**  
Sheet Number

## A2

Project No. 170427-1

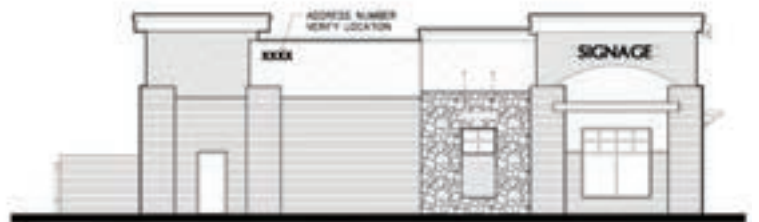
# STONE MOUNTAIN CENTER



North Elevation



West Elevation



East Elevation



South Elevation

