

FOR LEASE

804 Main Street

TOMS RIVER, NJ

RETAIL



PROPERTY INFO

- + 2,665 +/- SF available with drive through; 8,000 SF available without a drive through
- + Well positioned and highly visible from Route 166
- + Center has large pylon sign and 14 dedicated parking spaces; additional adjacent spaces available
- + Endcap at signalized intersection, adjacent to Kohl's Center
- + Second floor/mezzanine available, or can be removed
- + Build to suit/pad site possible
- + Building can be expanded if no drive thru is desired
- + Local tenants include: The Office, Shop Rite, Kohl's, Chase Bank, Modell's, and more
- + Potential drive thru available
- + Seeking bank, fast food, and other retailers



Demographics 2017

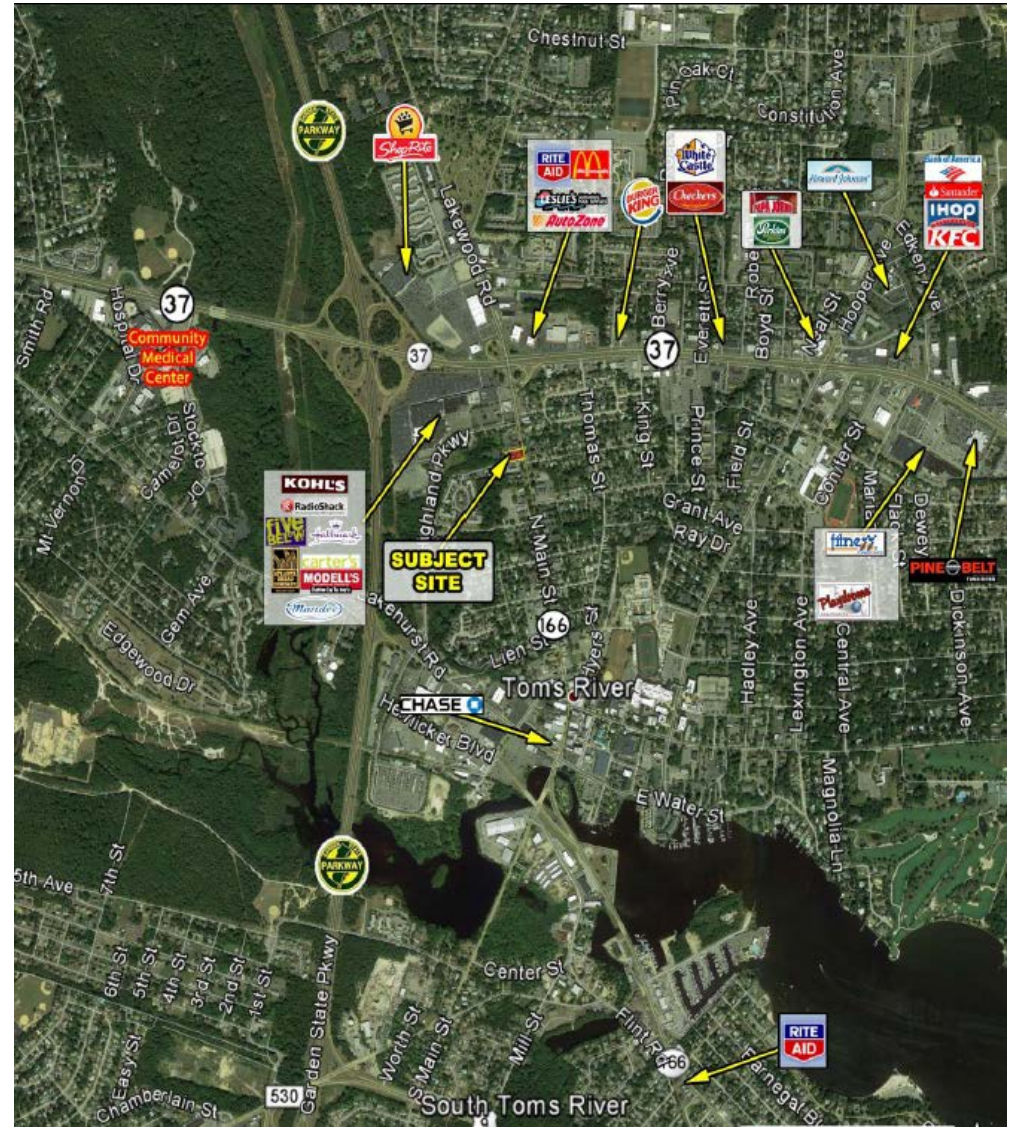
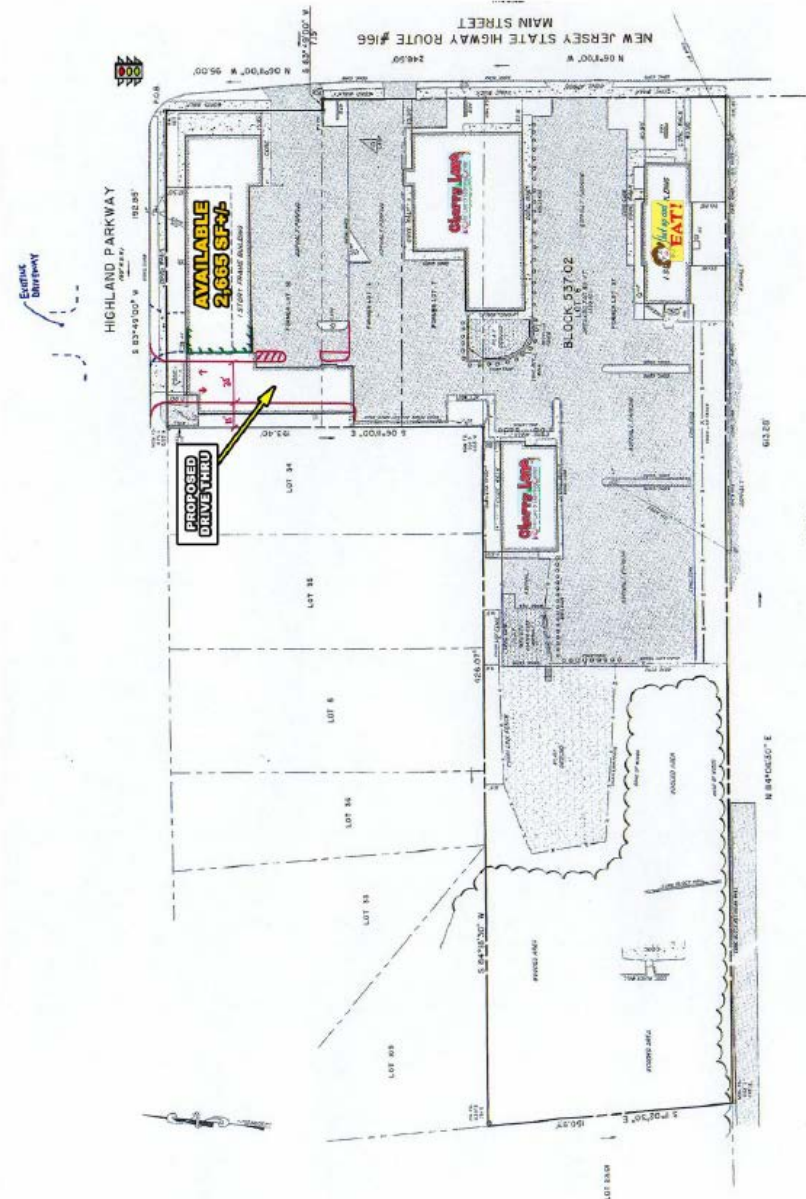
	1 mile	3 miles	5 miles
Population	8,982	66,940	137,688
Average Household Income	\$76,869	\$81,263	\$76,574
Daytime Population	9,308	30,308	46,554

FOR LEASE

804 Main Street

TOMS RIVER, NJ

RETAIL



FOR LEASE

804 Main Street

TOMS RIVER, NJ

RETAIL



CONTACT US

PATTI FIORE-AMCANGELO

Vice President

+1 732 509 2835

patti.amcangelo@cbre.com

© 2018 CBRE, Inc. All rights reserved. This information has been obtained from sources believed reliable, but has not been verified for accuracy or completeness. You should conduct a careful, independent investigation of the property and verify all information. Any reliance on this information is solely at your own risk. CBRE and the CBRE logo are service marks of CBRE, Inc. All other marks displayed on this document are the property of their respective owners. Photos herein are the property of their respective owners. Use of these images without the express written consent of the owner is prohibited.

www.cbre.us

CBRE