

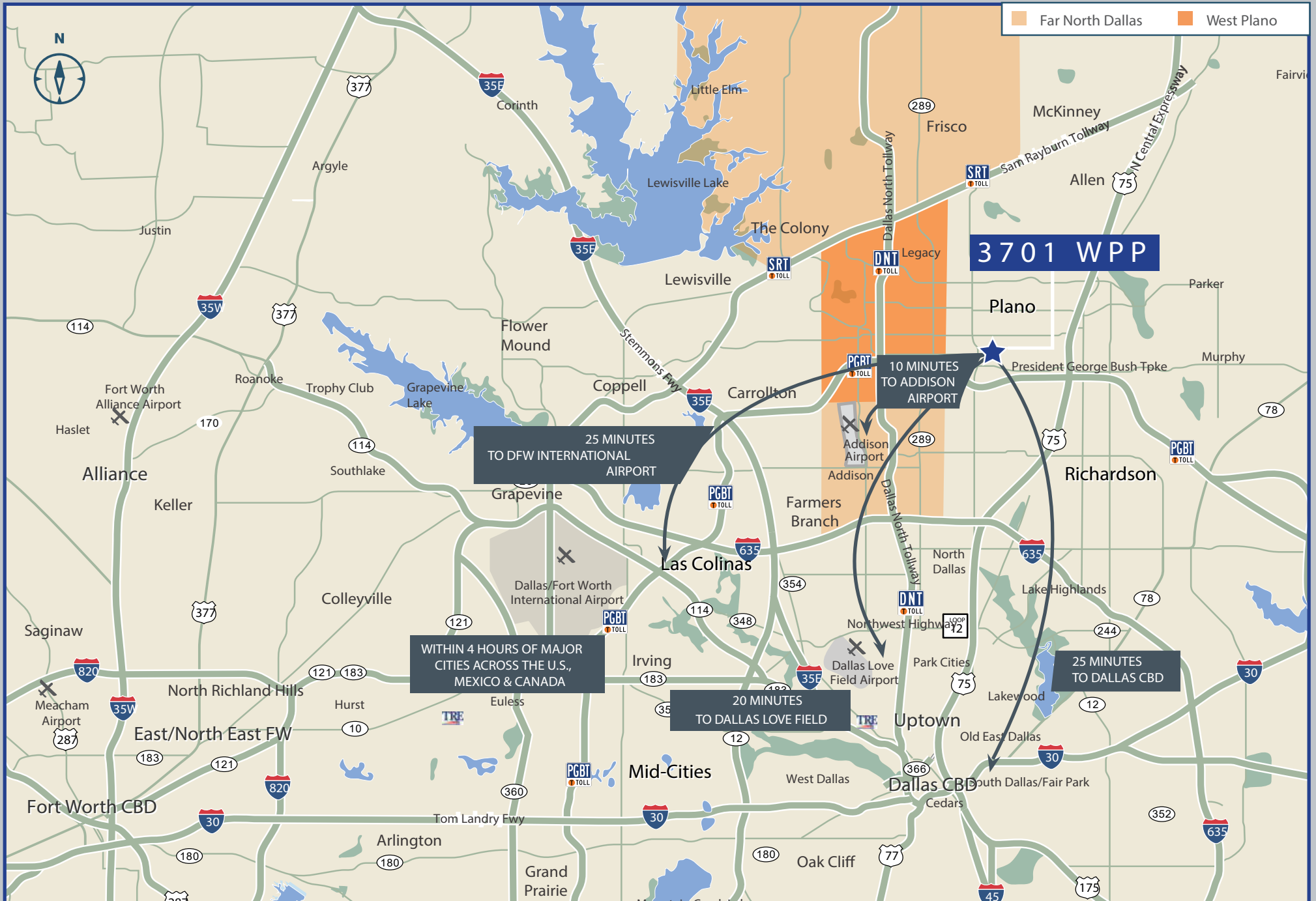
3701 W PLANO PARKWAY

PROPERTY HIGHLIGHTS

- Beautiful 3 Story Atrium
- Outdoor Deck with Seating
- Abundant Surface Parking (Up to 5:1000)
- Covered Parking Available
- Fiber Provided By Level 3 and Verizon
- Recently Updated Tenant Lounge
- Strong Responsive Ownership
- Convenient Accessibility to Pres. George Bush Turnpike
- Monument Signage Available
- Located on the DART Bus Line
- Prestigious West Plano Location



PREMIER WEST PLANO LOCATION



COUNTRY CLUBS & CHAMPIONSHIP GOLF

The neighborhoods surrounding 3701 W Plano Pkwy feature several premier country clubs and golf courses, creating an exclusive environment and offering premier client entertainment within a short drive.

Gleneagles Country Club
(4 Miles to the west)



Stonebriar Country Club
(10 Miles to the north)



Bent Tree Country Club
(8.5 Miles to the south)



Hills at Prestonwood Country Club
(7 Miles to the west)



Preston Trail Golf Club
(7 Miles to the south)



FIRST-CLASS HOTELS

There are 29 hotels in the West Plano submarket, and two more are currently under construction. Some of the most prominent accommodations include those shown below.



3701 W PLANO PARKWAY



Michael Carmichael
972.421.3306

Kurt Cherry
972.421.3322