

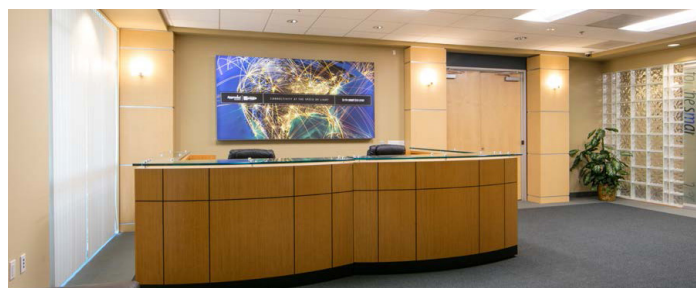
# AVAILABLE FOR LEASE

10 Orchard, Suite 200, Lake Forest, CA 92630  
± 13,419 SF



## LISTING DATA

- Approximately 13,419 Square Feet
- Space is divisible to 6,000 SF
- High image office buildings located in a corporate campus environment
- Building top and secondary signage available
- 2-Story lobby entrances
- State-of-the-art fiber optics
- Excellent 241 Freeway access and views
- Bake Parkway frontage
- 4/1000 parking
- Close proximity to numerous retail amenities



For more information, contact:

MARK JERUE  
Senior Vice President  
CalDRE: 01073399  
949.790.3121  
mjerue@leeirvine.com

CRAIG FITTERER  
Senior Vice President  
CalDRE: 01246929  
949.790.3123  
cfitterer@leeirvine.com

All information furnished regarding property for sale, rental or financing is from sources deemed reliable, but no warranty or representation is made to the accuracy thereof and same is submitted to errors, omissions, change of price, rental or other conditions prior to sale, lease or financing or withdrawal without notice. No liability of any kind is to be imposed on the broker herein.

# AVAILABLE FOR LEASE

10 Orchard, Suite 200, Lake Forest, CA 92630  
± 13,419 SF

## PROPERTY DESCRIPTION

### SITE PLAN



## PROPERTY DESCRIPTION

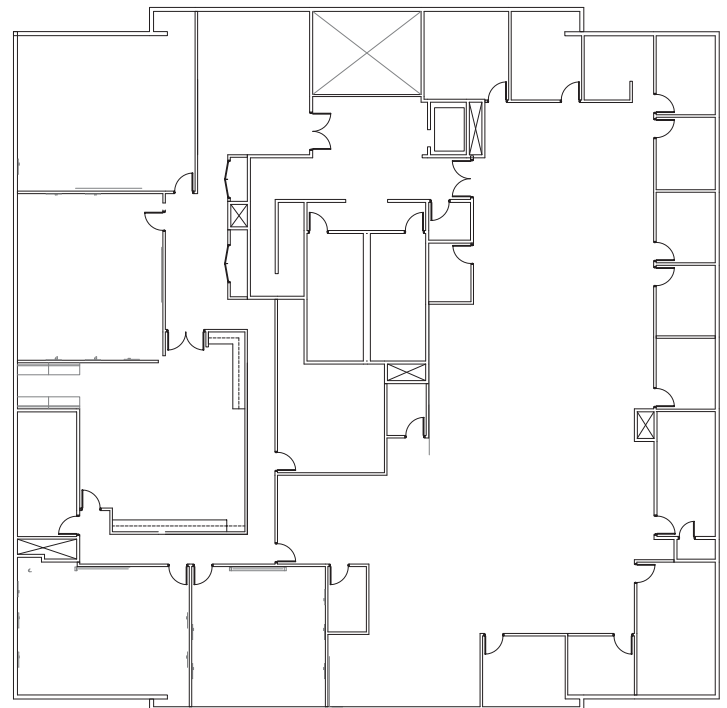
### FLOOR PLANS - 10 ORCHARD: SECOND FLOOR



For more information, contact:

MARK JERUE  
Senior Vice President  
CalDRE: 01073399  
949.790.3121  
mjerue@leeirvine.com

CRAIG FITTERER  
Senior Vice President  
CalDRE: 01246929  
949.790.3123  
cfitterer@leeirvine.com



All information furnished regarding property for sale, rental or financing is from sources deemed reliable, but no warranty or representation is made to the accuracy thereof and same is submitted to errors, omissions, change of price, rental or other conditions prior to sale, lease or financing or withdrawal without notice. No liability of any kind is to be imposed on the broker herein.