



OFFICE/MEDICAL SPACE FOR LEASE

SIGNATURE SQUARE SOUTH
617-657 E. GOLF ROAD, ARLINGTON HEIGHTS, IL

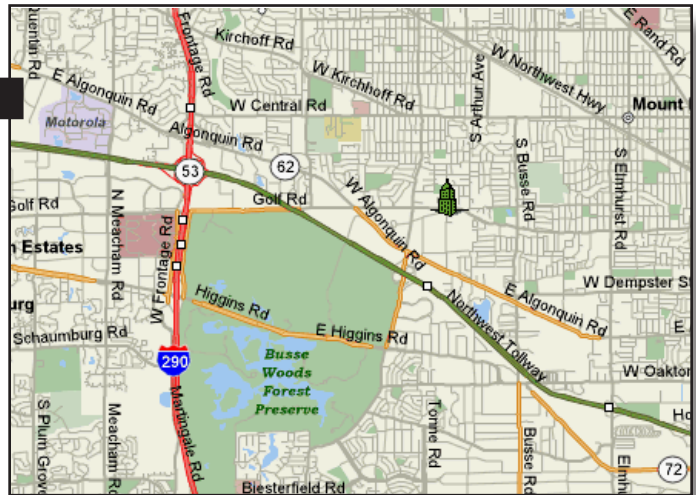


BUILDING FEATURES:

- 746-8,856 SF Available Immediately
- Located at stoplight intersection of Golf Rd/ Goebbert Rd
- Minutes from RT 53 & I-90
- Tenant controlled HVAC & 24-hour tenant access
- Comcast high-speed internet and cable available
- Beautifully landscaped with fountain and pond
- New Building Monument Sign with Tenant Signage Available
- High-end buildouts
- Zoned O-T
- Operable windows & tenant signage available
- Asking Rent : \$17.75-\$18.75 PSF Modified Gross

AVAILABLE SPACE:

BLDNG #	SUITE	SIZE	Available
617	104	995 SF	ASAP
617	110	7,861 SF	4/1/22
637	204	746 SF	ASAP
657	310	700-1,693 SF	ASAP
657	302	1,579-3,272 SF	ASAP
657	312	1,130 SF	Medical Space



FOR MORE INFORMATION:

RANDY OLCZYK
President/Principal
Direct: 847.246.9611
randy@chicagolandcommercial.com

RAY OKIGAWA
Senior Vice President
Direct: 847.246.9632
ray@chicagolandcommercial.com



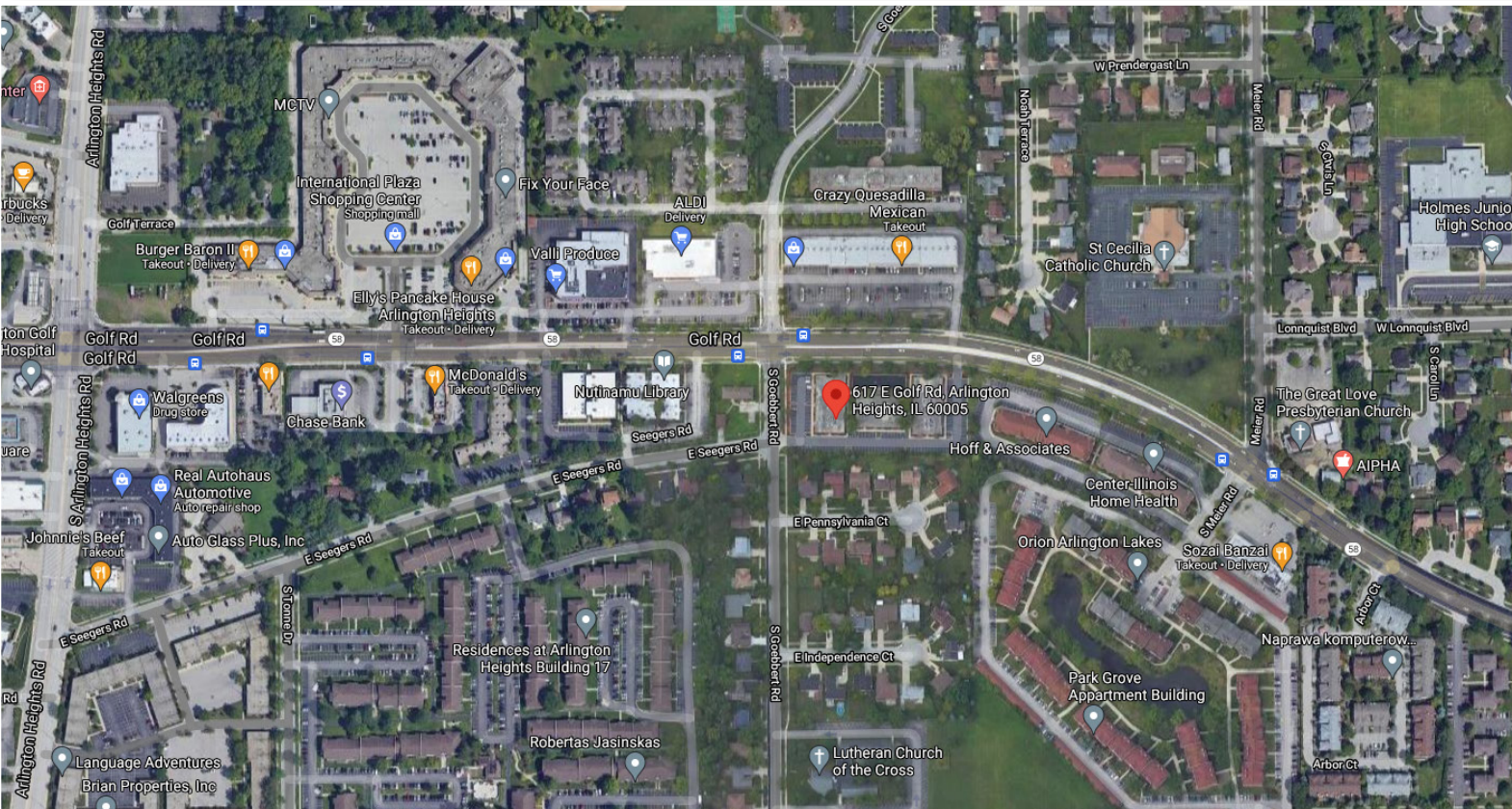
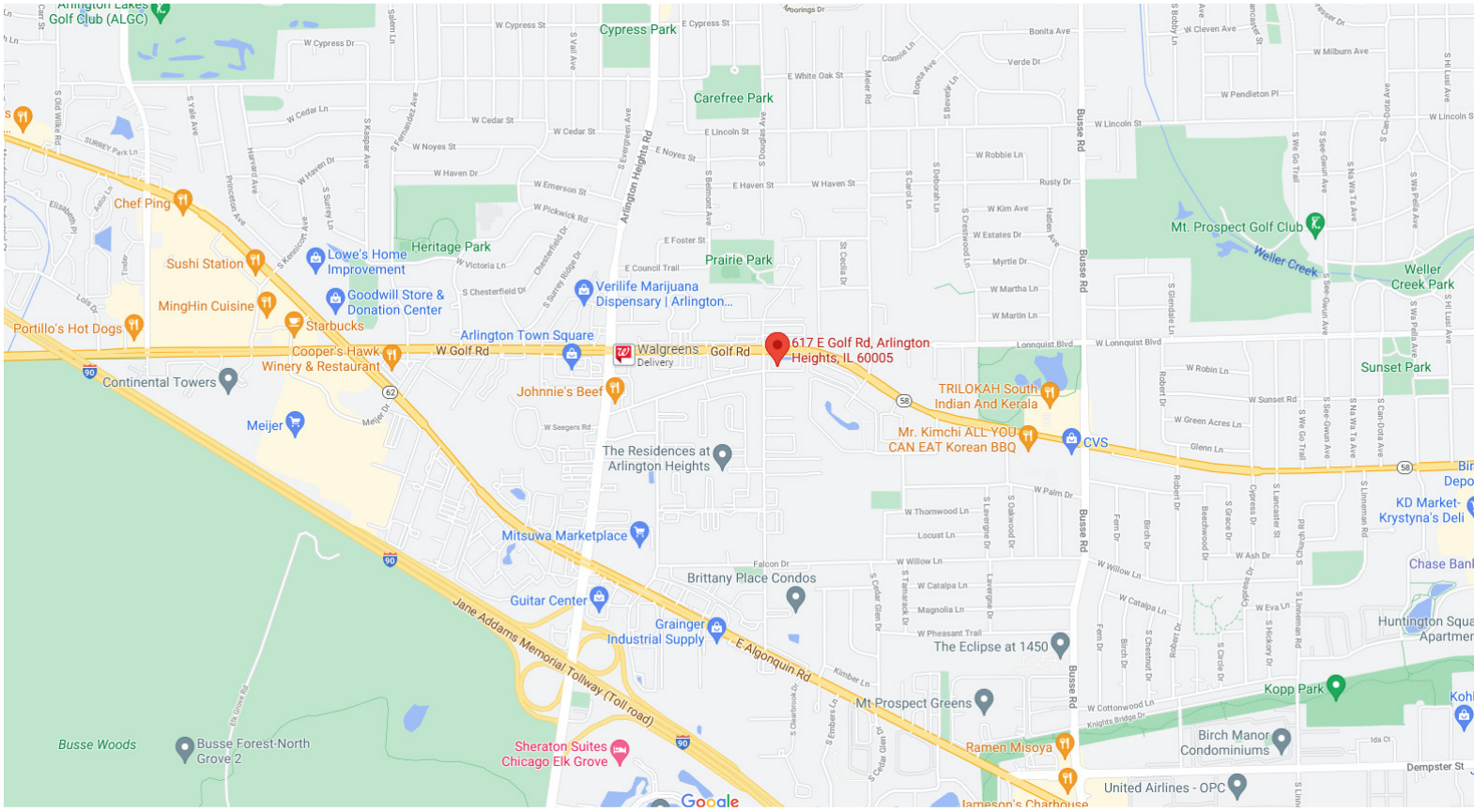
4811 Emerson Ave Suite 112, Palatine, IL



OFFICE/MEDICAL SPACE FOR LEASE

SIGNATURE SQUARE SOUTH

617-657 E. GOLF ROAD, ARLINGTON HEIGHTS, IL





OFFICE/MEDICAL SPACE FOR LEASE

SIGNATURE SQUARE SOUTH
617-657 E. GOLF ROAD, ARLINGTON HEIGHTS, IL

BUILDING PHOTOGRAPHS



BEAUTIFULLY LANDSCAPED GROUNDS
DRAMATIC POND & FOUNTAIN VIEWS



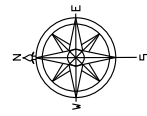
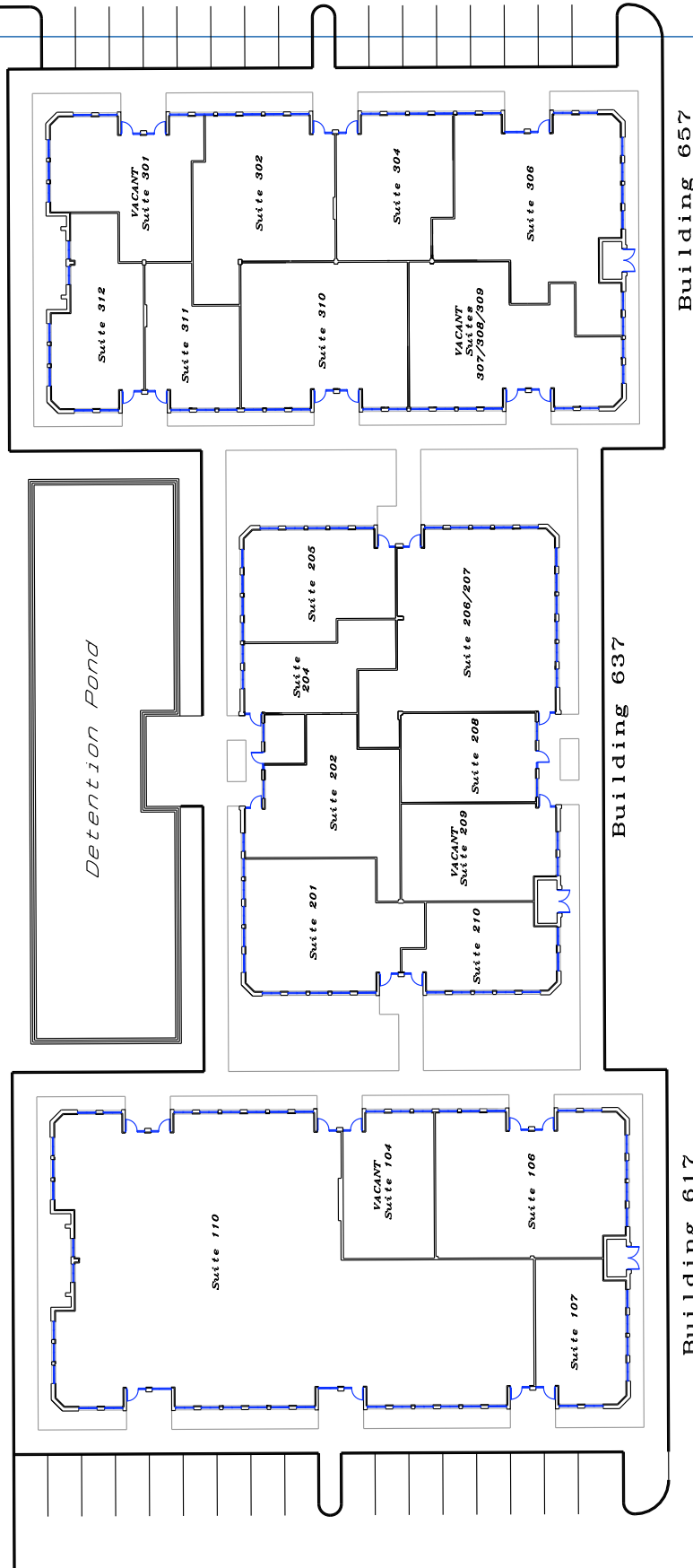


OFFICE/MEDICAL SPACE FOR LEASE

SIGNATURE SQUARE SOUTH
617-657 E. GOLF ROAD, ARLINGTON HEIGHTS, IL

BUILDING SITE PLAN

Go lf Road



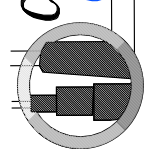
January 14, 2010

Signature Square South
Site Leasing Plan

INC.
Chicago
Planners
222
Estates, Illinois 60169
-0635
47-490-1022

Leasing
Sales
Tenant Advisory
Management

Chicago land
Commercial
REAL ESTATE

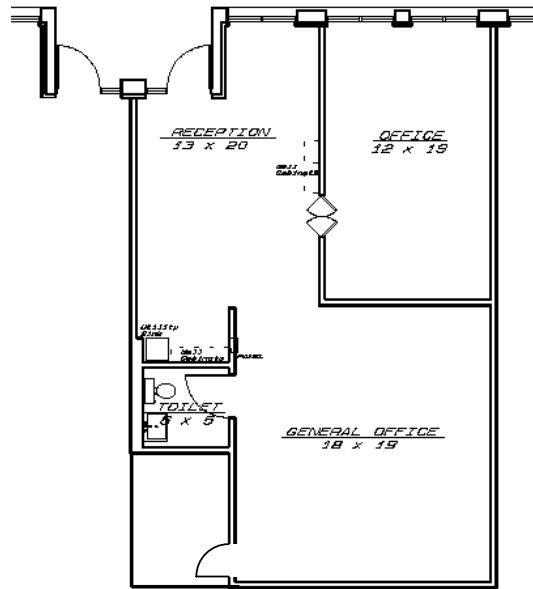




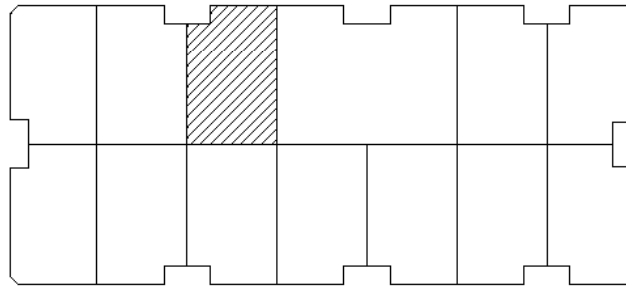
OFFICE/MEDICAL SPACE FOR LEASE

SIGNATURE SQUARE SOUTH
617-657 E. GOLF ROAD, ARLINGTON HEIGHTS, IL

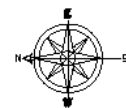
(995 SF) SUITE 104 FLOOR PLAN



Key Plan



Signature Square South *January 28, 2008*
Building 617
Suite 104 *995 Total SF*



Scale: No Scale

NOTE:

PRELIMINARY DRAWINGS FOR PLANNING PURPOSES. ALL ROOM DIMENSIONS HAVE BEEN ROUNDED TO THE NEAREST FOOT AND ARE APPROXIMATED. SQUARE FOOTAGE SHALL BE FINALIZED AND VERIFIED PRIOR TO LEASE SIGNING.

DRC Tm

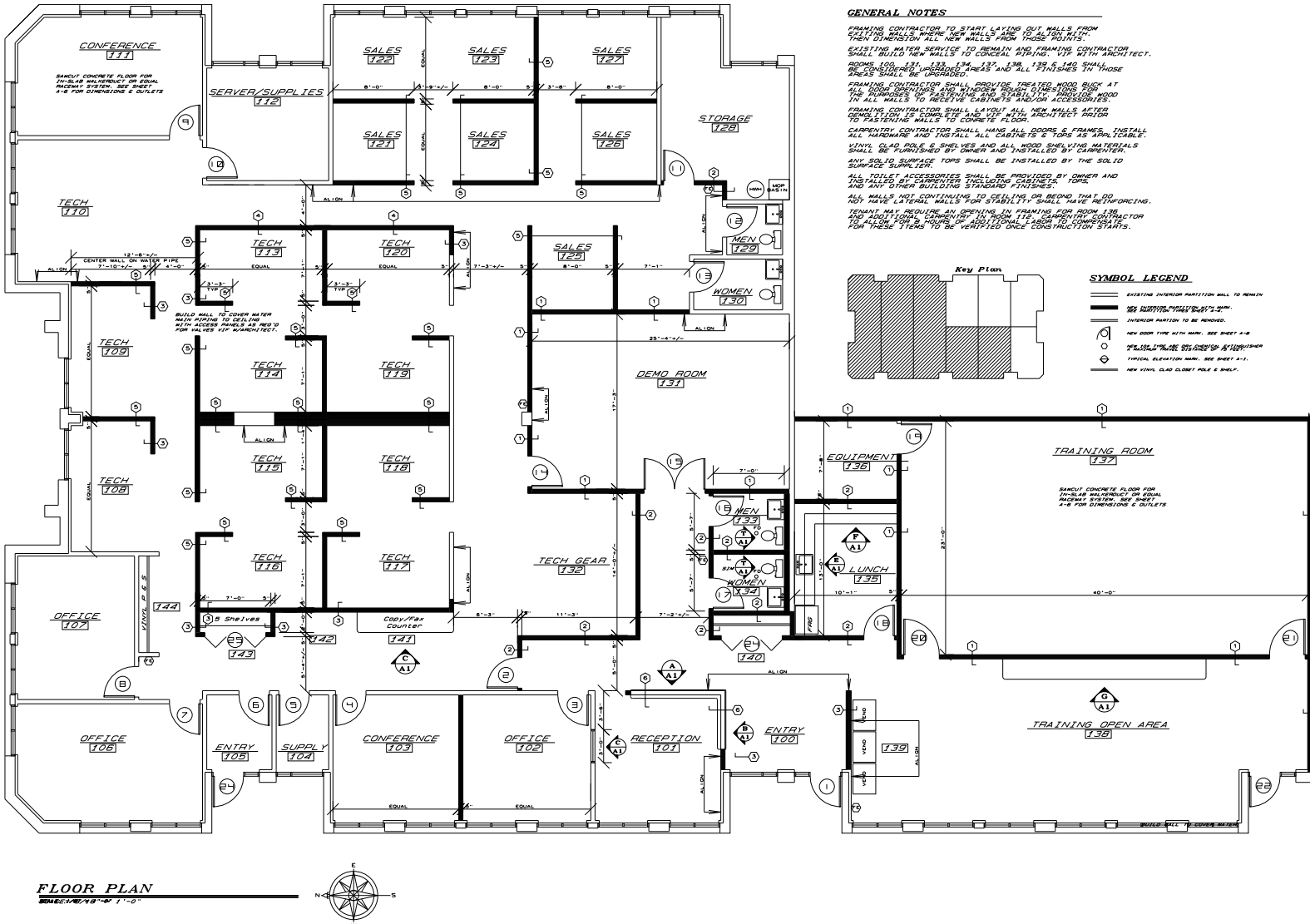


OFFICE/MEDICAL SPACE FOR LEASE

SIGNATURE SQUARE SOUTH

617-657 E. GOLF ROAD, ARLINGTON HEIGHTS, IL

EASILY DIVISIBLE FROM 2,800 -7,861 SF SUITE 110 FLOOR PLAN

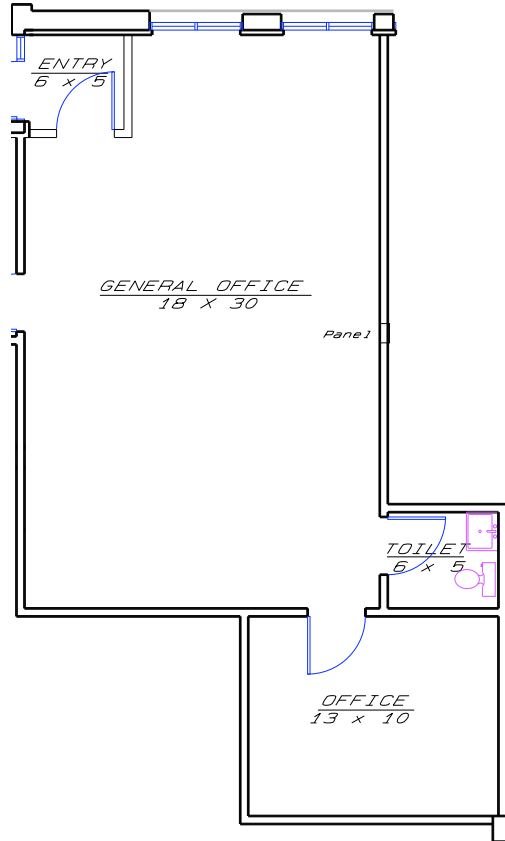




OFFICE/MEDICAL SPACE FOR LEASE

SIGNATURE SQUARE SOUTH
617-657 E. GOLF ROAD, ARLINGTON HEIGHTS, IL

(746 SF) SUITE 204 FLOOR PLAN



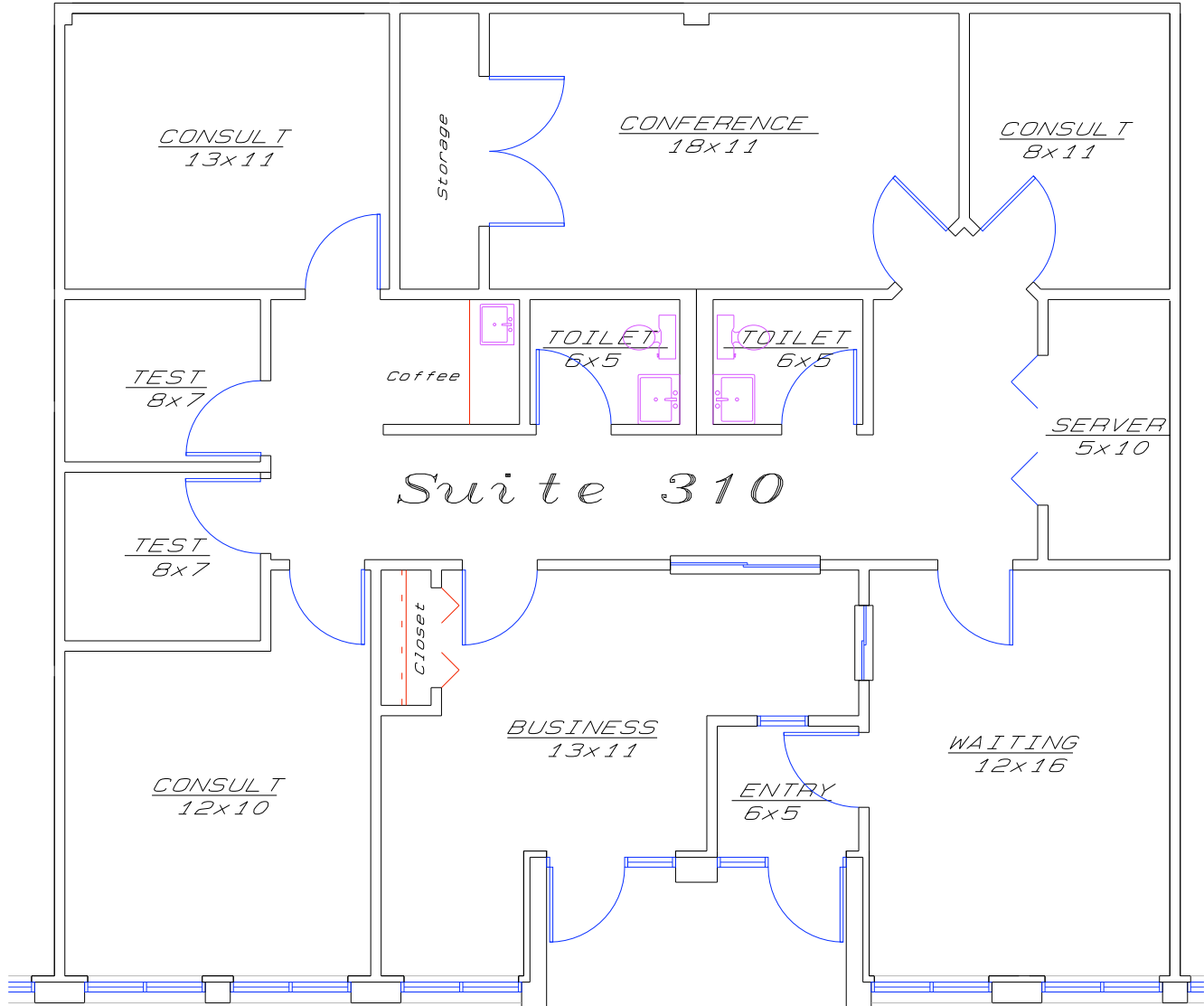


OFFICE/MEDICAL SPACE FOR LEASE

SIGNATURE SQUARE SOUTH

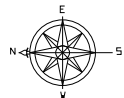
617-657 E. GOLF ROAD, ARLINGTON HEIGHTS, IL

EASILY DIVISIBLE FROM 700-1,693 SF SUITE 310 FLOOR PLAN



Signature Square South
 Building 657 Suite 310

January 14, 2010
 No Scale



NOTE:
 PRELIMINARY DRAWINGS FOR PLANNING PURPOSES. ALL ROOM DIMENSIONS
 HAVE BEEN ROUNDED TO THE NEAREST FOOT AND ARE APPROXIMATED. SQUARE
 FOOTAGE SHALL BE FINALIZED AND VERIFIED PRIOR TO LEASE SIGNING.

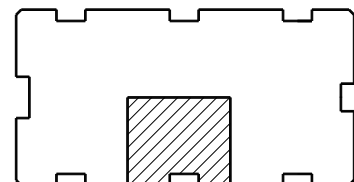
RBG, Inc.
 Architects/Builders
 2155 Stonington Ave.
 Suite 222
 Hoffman Estates, IL 60169
 847-490-0635
 (F) 847-490-1022



Chicago Land
Commercial
 REAL ESTATE

Leasing
 Sales
 Tenant Advisory
 Management

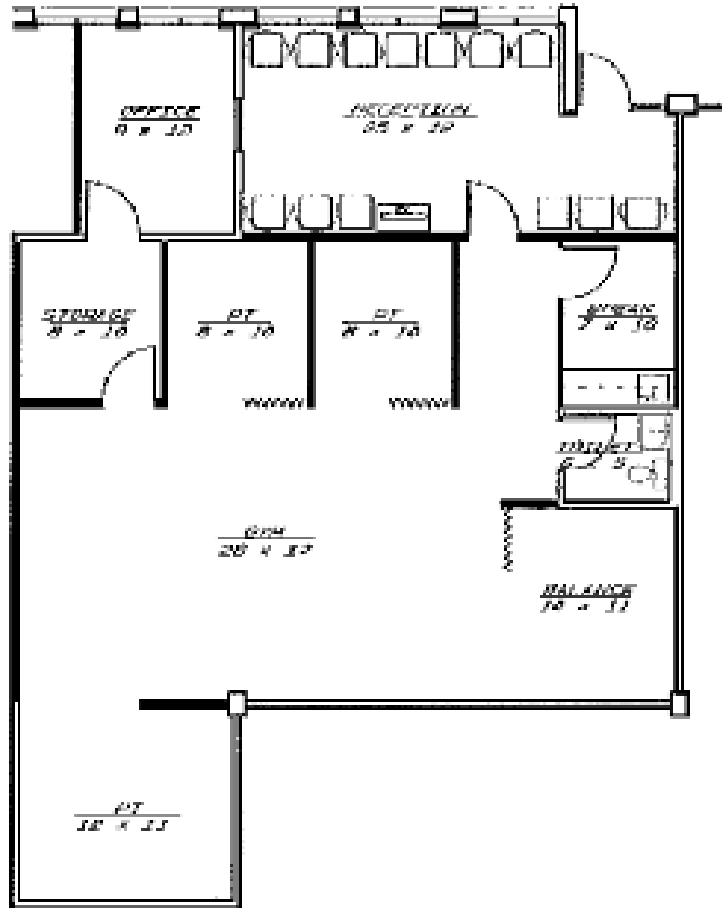
Key Plan





OFFICE/MEDICAL SPACE FOR LEASE
SIGNATURE SQUARE SOUTH
617-657 E. GOLF ROAD, ARLINGTON HEIGHTS, IL

657 E GOLF RD SF SUITE 302 (1,579 SF) FLOOR PLAN



Signature Square South
Progressive Physical Therapy
 1579 SF

617 E. Golf Rd. Suite 302
May 11, 2009

