

9380 BILLWOOD HWY.  
DIMONDALE, MICHIGAN

LAND FOR SALE  
52 Acres Available



**SIGNATURE  
ASSOCIATES**  
KNOW SIGNATURE | KNOW RESULTS

**DEVELOPMENT LAND**



## PROPERTY FEATURES

- 52 acres available
- Zoned C-3 – can support outdoor sales, storage, car dealership, hotel, and all retail uses
- Township willing to re-zone for additional uses
- Located within the newly created Federal Opportunity Zone allowing for preferential tax treatment
- Over 1,000 feet of highway exposure at I-96 East bound great for signage/product display
- Sale Price: Contact Broker



For more information, please contact:

**MARVIN PETROUS**

(248) 359 0647

[mpetrous@signatureassociates.com](mailto:mpetrous@signatureassociates.com)

**JOE RIZQALLAH**

(616) 235 6007

[jrizqallah@signatureassociates.com](mailto:jrizqallah@signatureassociates.com)

**SIGNATURE ASSOCIATES**

One Towne Square, Suite 1200

Southfield, MI 48076

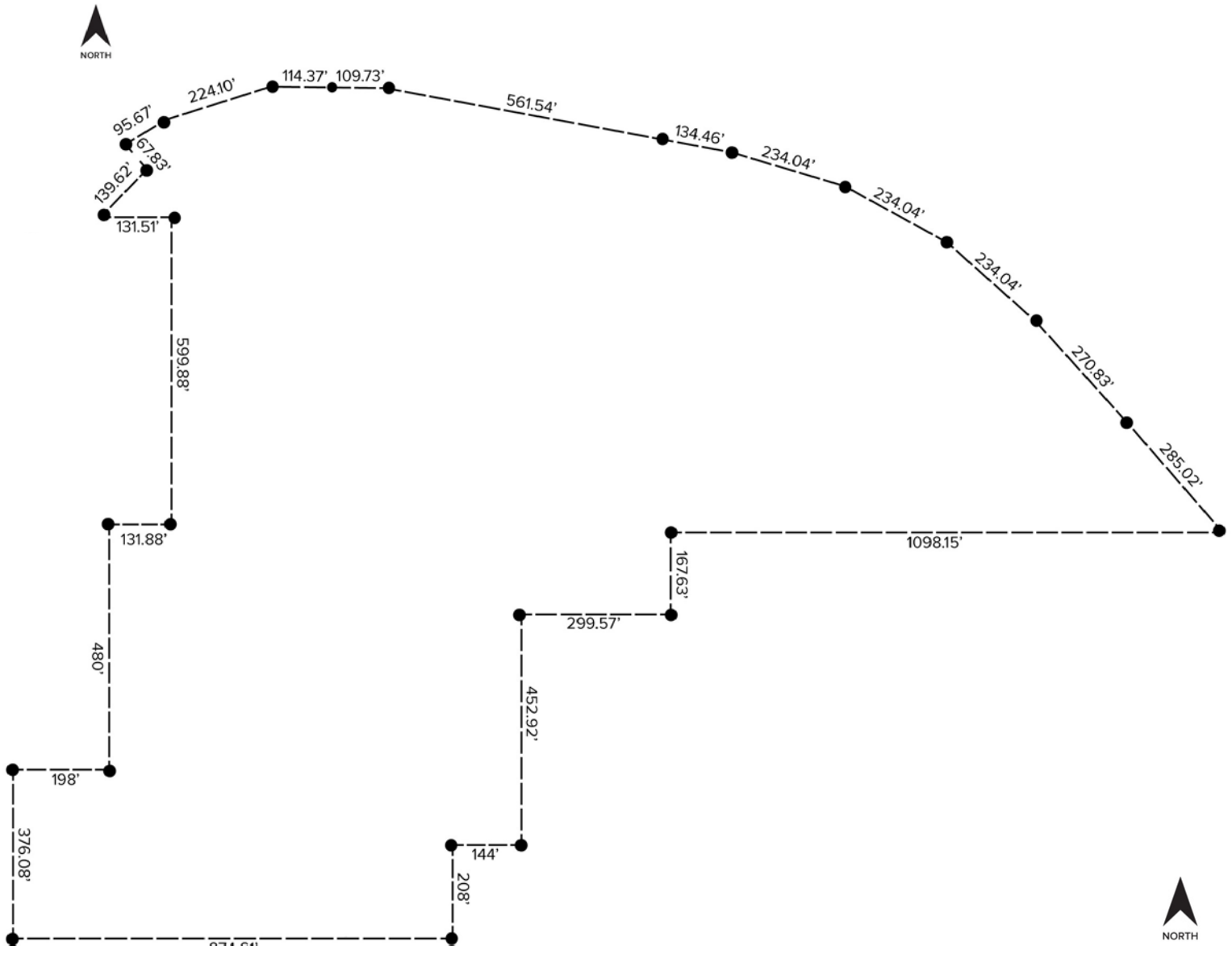
[www.signatureassociates.com](http://www.signatureassociates.com)

# 9380 Billwood Hwy. – Dimondale, Michigan

## Land For Sale

52  
Acres  
AVAILABLE

### Site Plan



For more information, please contact:

**MARVIN PETROUS**

(248) 359 0647

[mpetrous@signatureassociates.com](mailto:mpetrous@signatureassociates.com)

**JOE RIZQALLAH**

(616) 235 6007

[jrizqallah@signatureassociates.com](mailto:jrizqallah@signatureassociates.com)

**SIGNATURE ASSOCIATES**

One Towne Square, Suite 1200

Southfield, MI 48076

[www.signatureassociates.com](http://www.signatureassociates.com)