

WINCHESTER PLAZA

41593 WINCHESTER RD | TEMECULA, CA.

OFFICE SUITES FOR LEASE

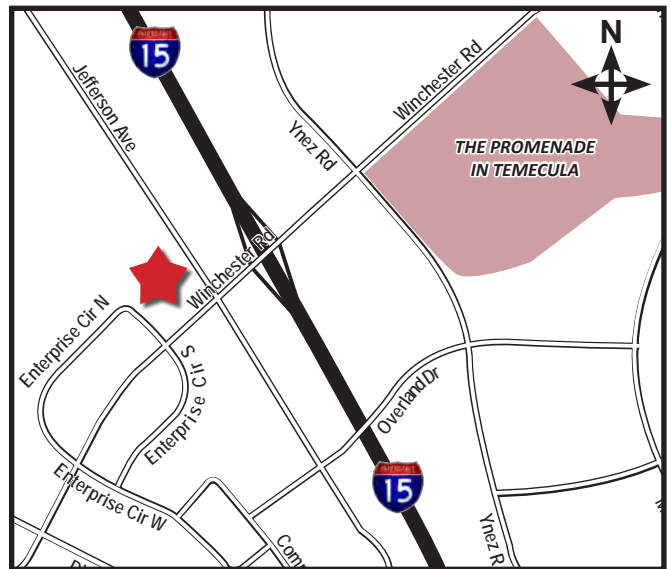
**Verizon FiOS
Enabled**



Features:

- Professional office and medical suites available for lease
- Located on the corner of Winchester Road & Jefferson Avenue
- I-15 freeway within 500 yards
- Ample parking including subterranean parking
- Lush landscaping
- Please contact agent for showing instructions

**LEASE RATE STARTING AT:
\$1.50/SF MG!**



**LEE &
ASSOCIATES®**
COMMERCIAL REAL ESTATE SERVICES
25240 Hancock Avenue, Suite 100
Murrieta, CA 92562
P: 951.445.4500 F: 951.445.4527
www.lee-associates.com

For More Information, Please Contact:

SHERI SHOEMAKER
(951) 445-4510
sshoemaker@lee-associates.com
Lic. #00846946

MARY PIPER
(951) 445-4516
mpiper@lee-associates.com
Lic. #01268829

No warranty or representation has been made to the accuracy of the foregoing information. Terms of sale or lease and availability are subject to change or withdrawal without notice.
Lee & Associates Commercial Real Estate Services, Inc. - Riverside. 25240 Hancock Avenue, Suite 100 - Murrieta, CA 92562 | Corporate ID# 01048055

WINCHESTER PLAZA

41593 WINCHESTER RD | TEMECULA, CA.

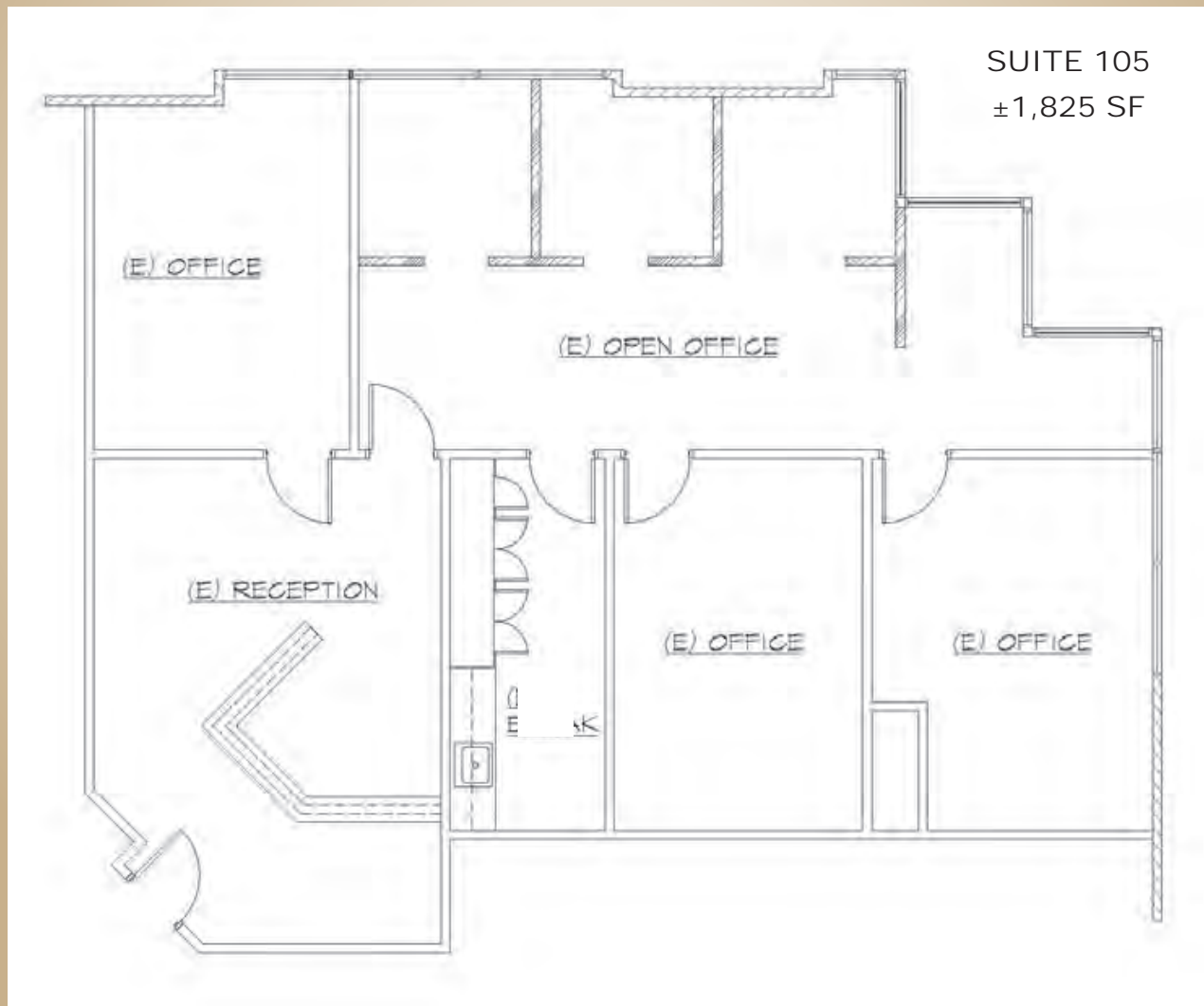
OFFICE SUITES FOR LEASE

SUITE	RSF	LEASE RATE*	AVAILABILITY	DESCRIPTION
105	±1,825	\$1.50 PSF MG	Available Immediately	Reception with built in desk, large conference room, two private offices, open work area with building in cubicles, kitchen/workroom Do Not Disturb Tenant

Square footages based on rentable square feet.

*Modified Gross leases do not include premises janitorial and separately metered electric.

Contact Agent for Touring Instructions.



COMMERCIAL REAL ESTATE SERVICES

25240 Hancock Avenue, Suite 100
Murrieta, CA 92562

P: 951.445.4500 F: 951.445.4527

www.lee-associates.com

For More Information, Please Contact:

SHERI SHOEMAKER

(951) 445-4510

sshoemaker@lee-associates.com

Lic. #00846946

MARY PIPER

(951) 445-4516

mpiper@lee-associates.com

Lic. #01268829

No warranty or representation has been made to the accuracy of the foregoing information. Terms of sale or lease and availability are subject to change or withdrawal without notice.

Lee & Associates Commercial Real Estate Services, Inc. - Riverside, 25240 Hancock Avenue, Suite 100 - Murrieta, CA 92562 | Corporate ID# 01048055

WINCHESTER PLAZA

41593 WINCHESTER RD | TEMECULA, CA.

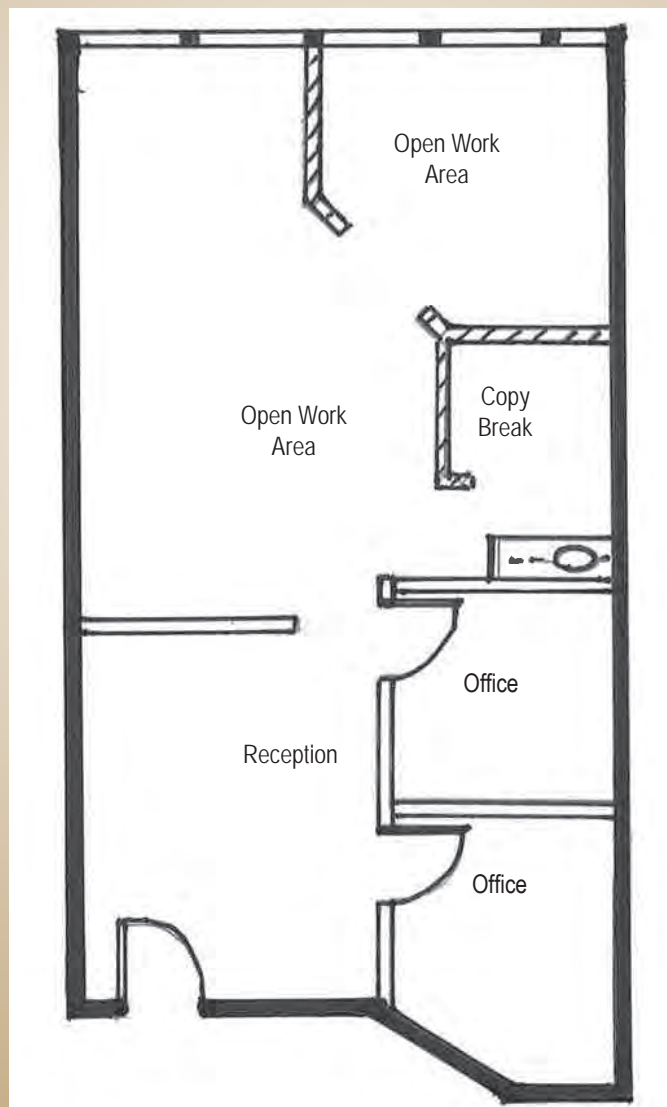
OFFICE SUITES FOR LEASE

SUITE	RSF	LEASE RATE*	AVAILABILITY	DESCRIPTION
108	±987	\$1.50 PSF MG	Available Immediately	Reception, 2 offices, copy-break area and two open work areas with perimeter windows.

Square footages based on rentable square feet.

*Modified Gross leases do not include premises janitorial and separately metered electric.
Contact Agent for Touring Instructions.

Rev 03/17/17



SUITE 108

±987 SF



COMMERCIAL REAL ESTATE SERVICES

25240 Hancock Avenue, Suite 100
Murrieta, CA 92562

P: 951.445.4500 F: 951.445.4527

www.lee-associates.com

For More Information, Please Contact:

SHERI SHOEMAKER

(951) 445-4510

sshemaker@lee-associates.com

Lic. #00846946

MARY PIPER

(951) 445-4516

mpiper@lee-associates.com

Lic. #01268829

No warranty or representation has been made to the accuracy of the foregoing information. Terms of sale or lease and availability are subject to change or withdrawal without notice.
Lee & Associates Commercial Real Estate Services, Inc. - Riverside. 25240 Hancock Avenue, Suite 100 - Murrieta, CA 92562 | Corporate ID# 01048055