



RETAIL SPACE FOR LEASE IN ACWORTH'S COWAN PLAZA

Long Term Tenants. Ample Parking.
Adjacent to Publix and I-75. Near
Downtown Acworth.

4794 COWAN RD, ACWORTH, GA 30101

DON EDWARDS
Associate Broker/KW Director
(770) 324-3457
don@dbeproperties.com
119563, GA





Overview

Cowan Plaza is a well maintained 6 bay plaza in Acworth, GA, located just off I-75 and Hwy 92 and is home to many long term tenants.

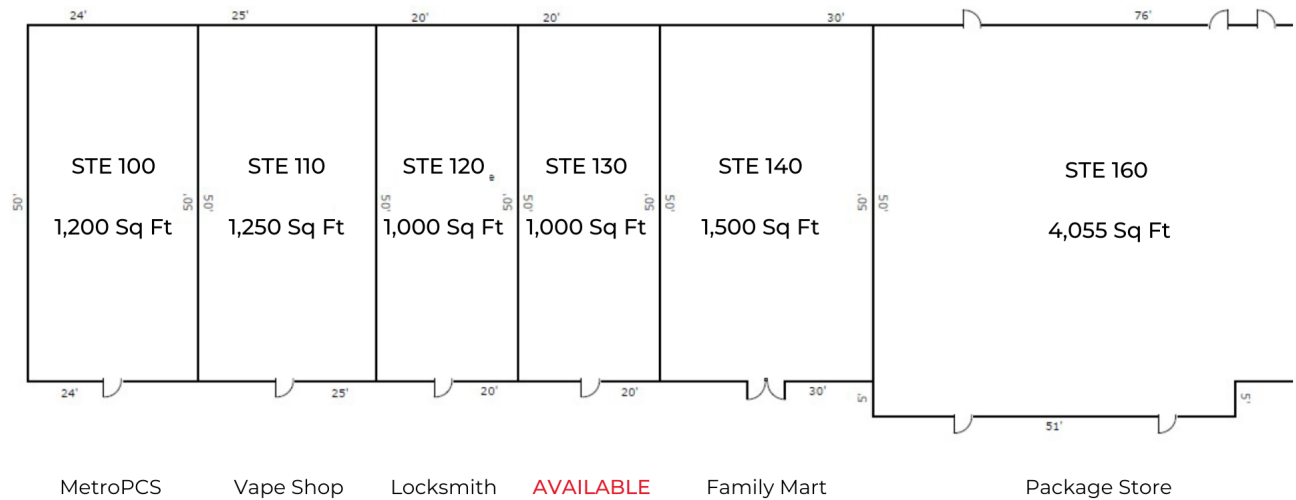
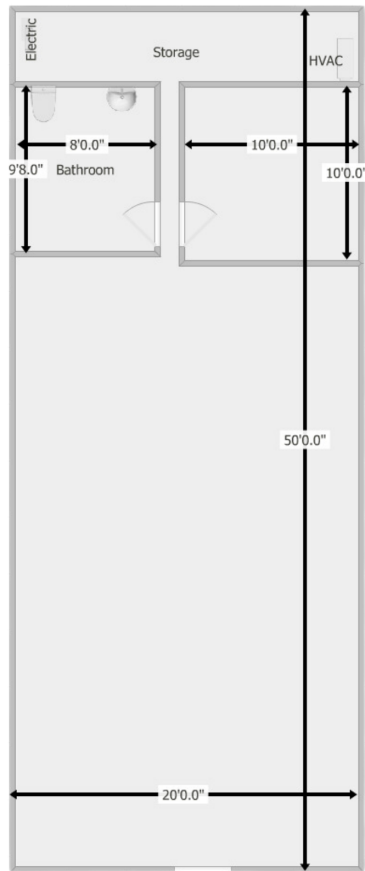
Perfect for businesses seeking a high-visibility location, Cowan Rd serves also as a side entrance into Publix Anchored Shopping Center with major retailers like Zaxby's, Sonic, Dominos Pizza, and local hot spots: bar and grill, Chinese and a cafe. The large lot provides ample parking and great turnaround access.

Type:	Retail
Address1:	4974 Cowan Road
Address2:	Acworth, GA 30101
Cross Streets:	Cowan Rd and Baker Rd
Lease Rate:	\$25.00 sf/yr NNN + CAM
Available SF:	1,000
Market:	NW Atlanta
Sub-market:	Acworth
Year Built:	2006
Parking:	Surface
Zoning:	C2

AVAILABLE SUITE



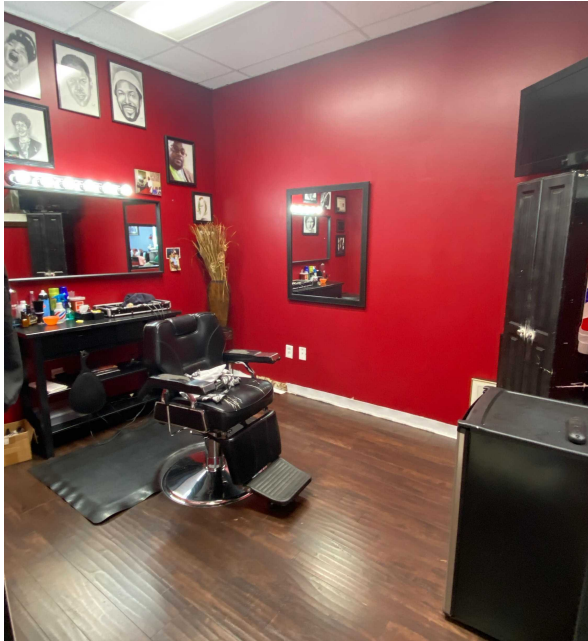
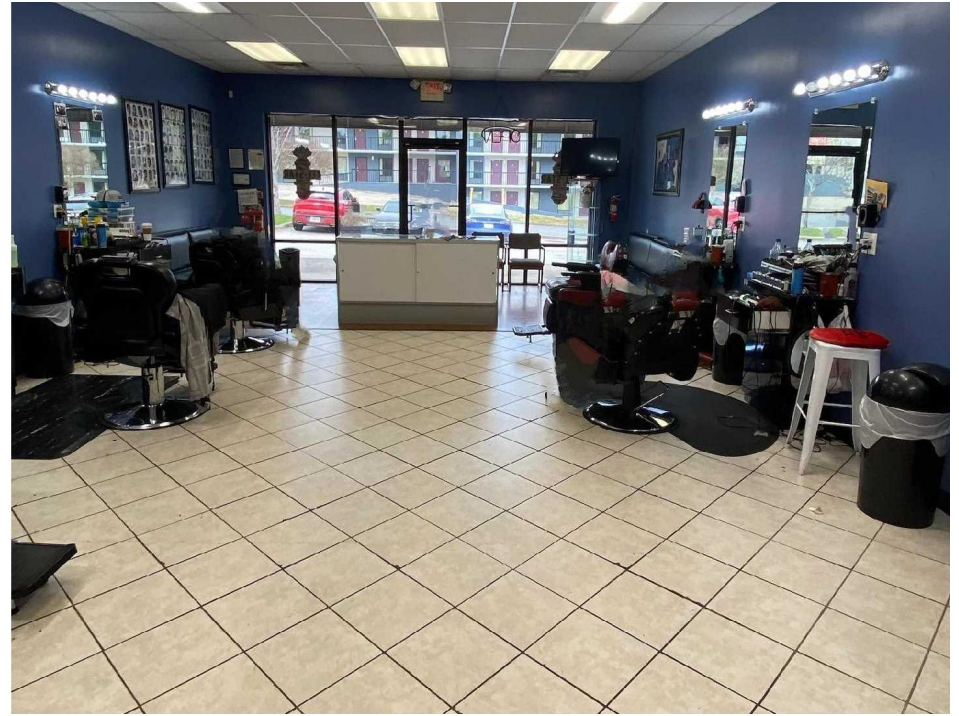
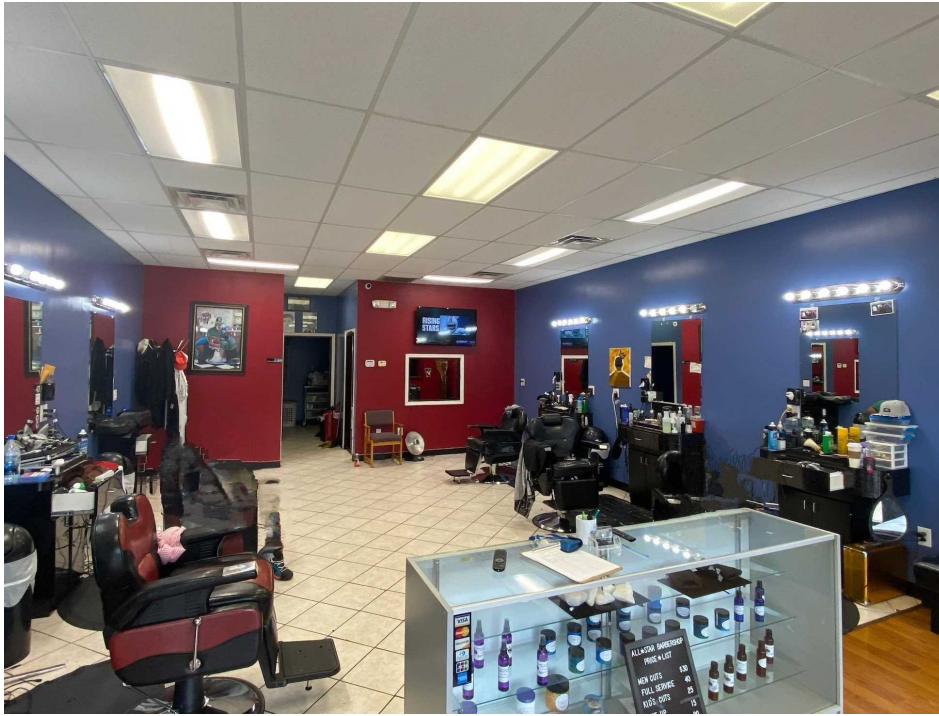
4974 Cowan Rd, Suite 130



We obtained the information above from sources we believe to be reliable. However, we have not verified its accuracy and make no guarantee, warranty or representation about it. It is submitted subject to the possibility of errors, omissions, change of price, rental or other conditions, prior sale, lease or financing, or withdrawal without notice. We include projections, opinions, assumptions or estimates for example only, and they may not represent current or future performance of the property. You and your tax and legal advisors should conduct your own investigation of the property and transaction.

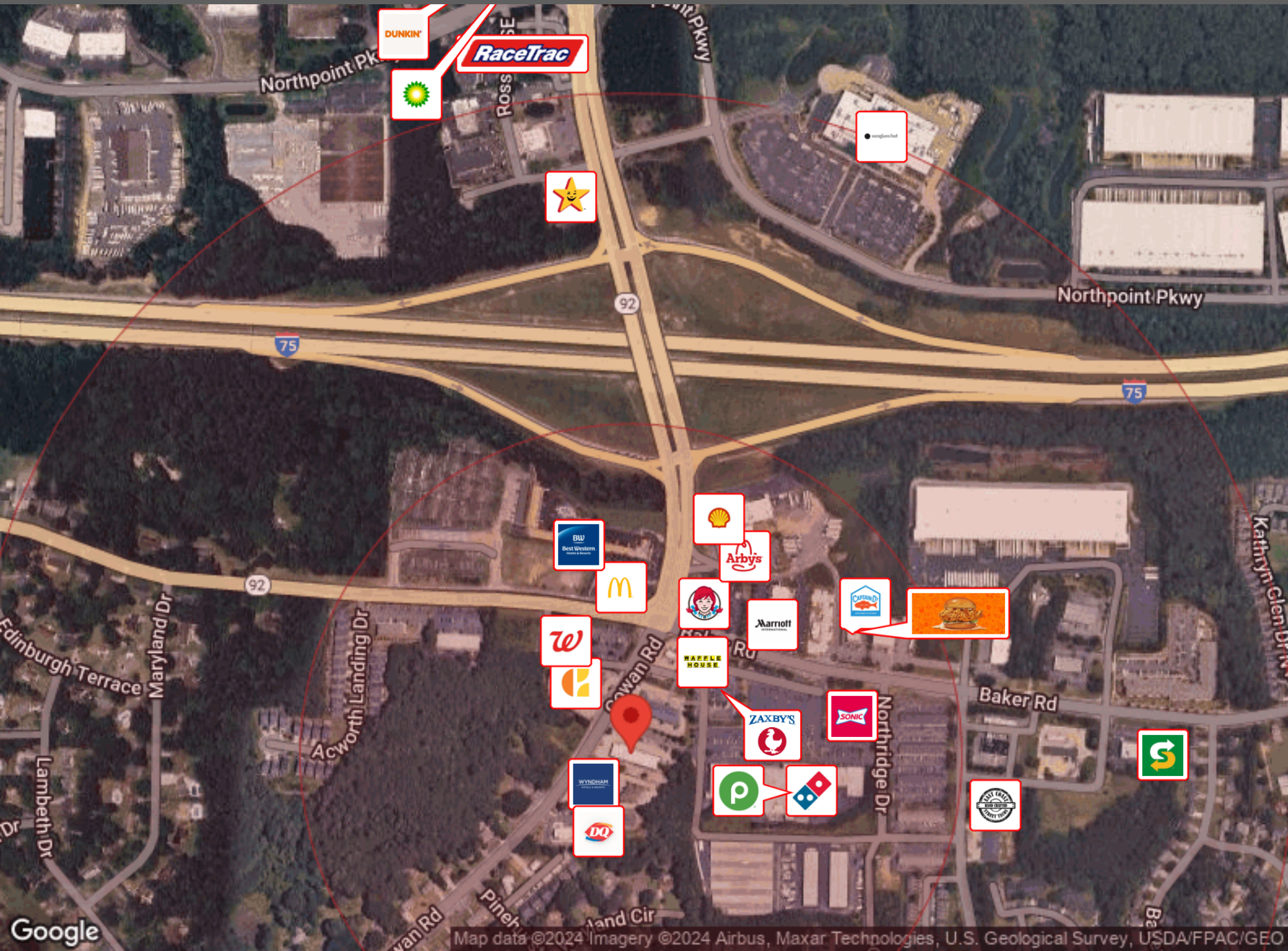


SUITE PHOTOS



We obtained the information above from sources we believe to be reliable. However, we have not verified its accuracy and make no guarantee, warranty or representation about it. It is submitted subject to the possibility of errors, omissions, change of price, rental or other conditions, prior sale, lease or financing, or withdrawal without notice. We include projections, opinions, assumptions or estimates for example only, and they may not represent current or future performance of the property. You and your tax and legal advisors should conduct your own investigation of the property and transaction.

BUSINESS MAP



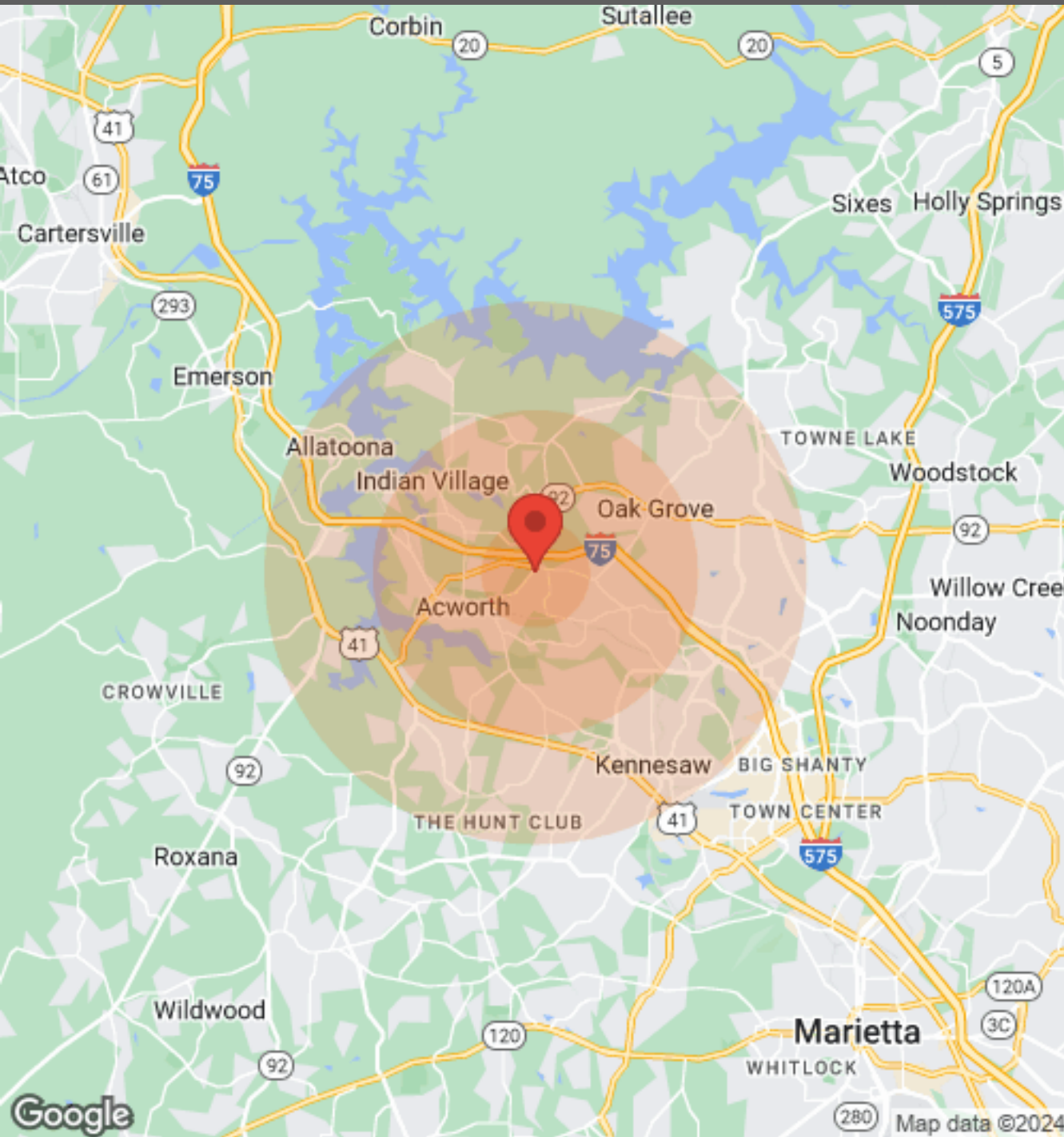


ACWORTH, GA

As part of the NW Atlanta Metro area, Acworth is nicknamed The Lake City, thanks to the beautiful Lake Allatoona and Lake Acworth. The city is also known for its outdoor recreation with the Kennesaw Mountain National Battlefield Park and Red Top Mountain State Park both nearby. The city boasts a rich history, a charming downtown, abundant outdoor activities, a vibrant restaurant scene and an active festival and event calendar.



DEMOGRAPHICS



Population	1 Mile	3 Miles	5 Miles
Male	6,377	26,286	62,140
Female	6,682	27,426	63,749
Total Population	13,059	53,712	125,889

Age	1 Mile	3 Miles	5 Miles
Ages 0-14	3,185	12,654	27,520
Ages 15-24	1,839	7,629	17,195
Ages 25-54	5,741	22,037	51,304
Ages 55-64	1,212	5,698	15,133
Ages 65+	1,082	5,694	14,737

Race	1 Mile	3 Miles	5 Miles
White	7,979	36,099	91,023
Black	3,382	11,679	21,280
Am In/AK Nat	11	72	160
Hawaiian	5	5	14
Hispanic	2,216	5,994	15,680
Multi-Racial	2,806	7,760	19,506

Income	1 Mile	3 Miles	5 Miles
Median	\$52,744	\$69,646	\$64,911
< \$15,000	668	1,617	3,579
\$15,000-\$24,999	382	1,021	3,085
\$25,000-\$34,999	662	1,596	3,725
\$35,000-\$49,999	948	2,531	6,140
\$50,000-\$74,999	1,264	4,638	10,086
\$75,000-\$99,999	519	3,426	7,082
\$100,000-\$149,999	302	3,001	6,605
\$150,000-\$199,999	112	769	2,214
> \$200,000	N/A	487	1,454

Housing	1 Mile	3 Miles	5 Miles
Total Units	5,084	20,176	46,948
Occupied	4,605	18,764	43,510
Owner Occupied	3,025	14,380	32,490
Renter Occupied	1,580	4,384	11,020
Vacant	479	1,412	3,438

We obtained the information above from sources we believe to be reliable. However, we have not verified its accuracy and make no guarantee, warranty or representation about it. It is submitted subject to the possibility of errors, omissions, change of price, rental or other conditions, prior sale, lease or financing, or withdrawal without notice. We include projections, opinions, assumptions or estimates for example only, and they may not represent current or future performance of the property. You and your tax and legal advisors should conduct your own investigation of the property and transaction.



DONALD B EDWARDS JR

KW Commercial Director and Associate Broker

Raised in Atlanta Georgia and licensed in 1984, my first transaction was an industrial lease for a Canadian firm seeking space in the Atlanta area. Since then I have done industrial, retail, office, multifamily, land and residential sales, as well as landlord and tenant rep, property management and site selection for national franchises. As head of the trust real estate, department for all the South Trust Banks, I was responsible for a staff and a \$750M portfolio of diverse assets including retail, office, land, mining, timber, farms, leases, mortgages, property inspections and asset management from coast to coast. In addition, I have over 18 years of commercial and residential construction experience. My land deals have included assemblages, out parcels, mini warehouses and zoning. As a past president of the Association of Georgia Real Estate Exchangors, I have experience in 1031 exchanges. In addition, I have passed all the CCIM course work.



Cell: 770.324.3457
 Direct: 678-298-1612
 Office: 678-298-1600
don@dbeproperties.com

Administrative/Additional Contacts:
markie@atlmetrocre.com
kylee@wnkproperties.com

DISCLAIMER

All materials and information received or derived from DBE Properties, its directors, officers, agents, advisors, affiliates and/or any third party sources are provided without representation or warranty as to completeness, veracity, or accuracy, condition of the property, compliance or lack of compliance with applicable governmental requirements, developability or suitability, financial performance of the property, projected financial performance of the property for any party's intended use or any and all other matters.

Neither DBE Properties, its directors, officers, agents, advisors, or affiliates makes any representation or warranty, express or implied, as to accuracy or completeness of the any materials or information provided, derived, or received. Materials and information from any source, whether written or verbal, that may be furnished for review are not a substitute for a party's active conduct of its own due diligence to determine these and other matters of significance to such party. DBE Properties will not investigate or verify any such matters or conduct due diligence for a party unless otherwise agreed in writing.

EACH PARTY SHALL CONDUCT ITS OWN INDEPENDENT INVESTIGATION AND DUE DILIGENCE.

Any party contemplating or under contract or in escrow for a transaction is urged to verify all information and to conduct their own inspections and investigations including through appropriate third-party independent professionals selected by such party. All financial data should be verified by the party including by obtaining and reading applicable documents and reports and consulting appropriate independent professionals. DBE Properties makes no warranties and/or representations regarding the veracity, completeness, or relevance of any financial data or assumptions. DBE Properties does not serve as a financial advisor to any party regarding any proposed transaction.

All data and assumptions regarding financial performance, including that used for financial modeling purposes, may differ from actual data or performance. Any estimates of market rents and/or projected rents that may be provided to a party do not necessarily mean that rents can be established at or increased to that level. Parties must evaluate any applicable contractual and governmental limitations as well as market conditions, vacancy factors and other issues in order to determine rents from or for the property. Legal questions should be discussed by the party with an attorney. Tax questions should be discussed by the party with a certified public accountant or tax attorney. Title questions should be discussed by the party with a title officer or attorney. Questions regarding the condition of the property and whether the property complies with applicable governmental requirements should be discussed by the party with appropriate engineers, architects, contractors, other consultants, and governmental agencies. All properties and services are marketed by DBE Properties in compliance with all applicable fair housing and equal opportunity laws.