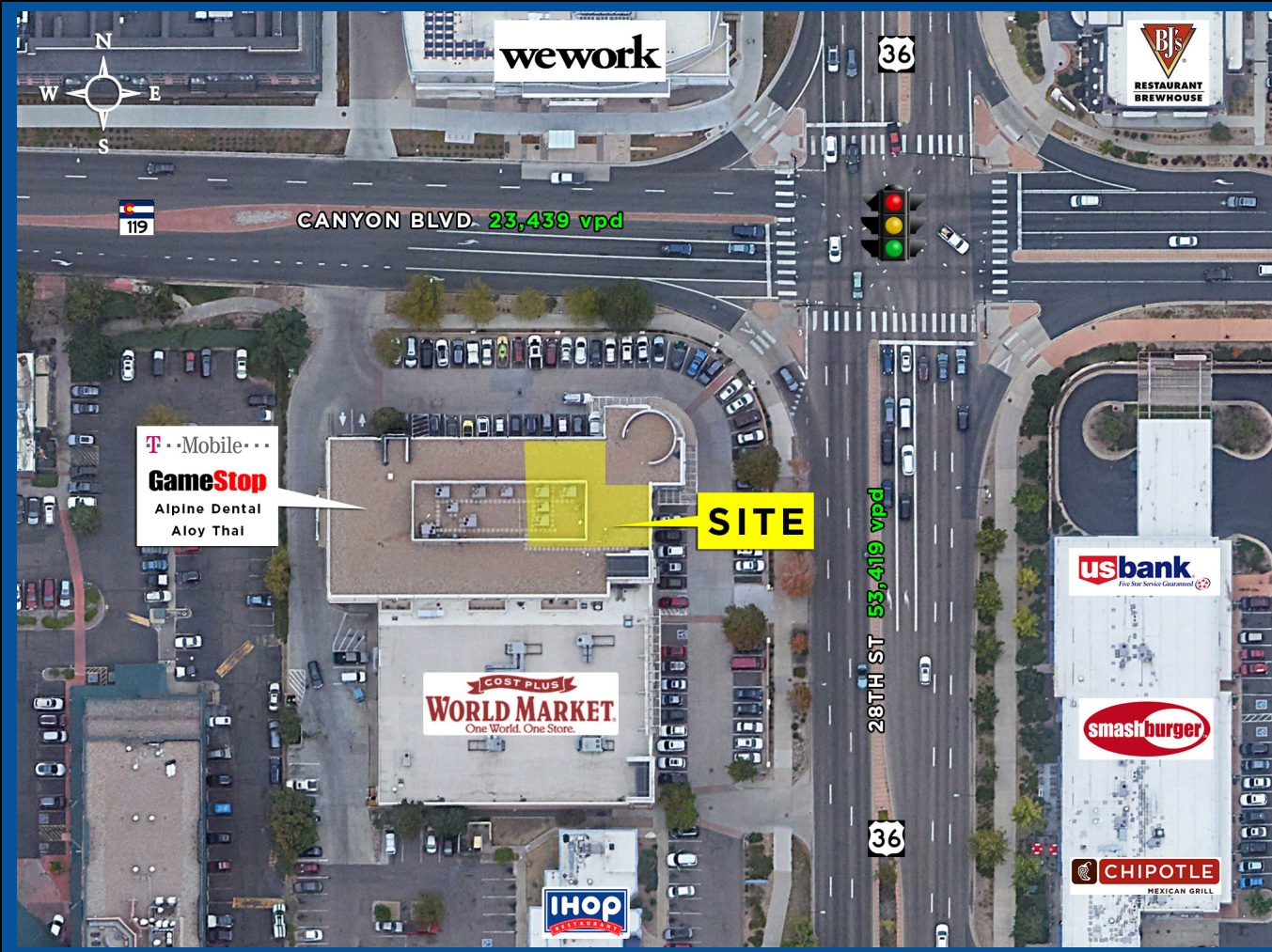
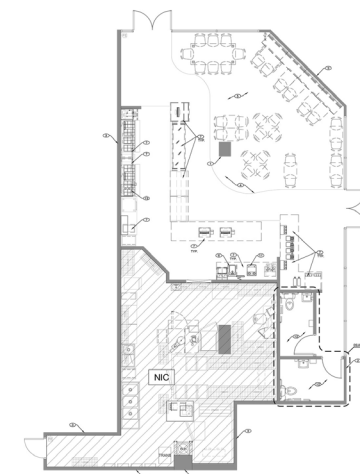
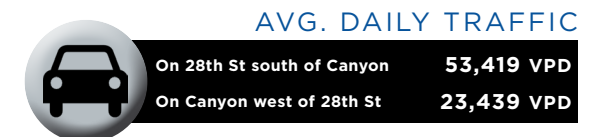
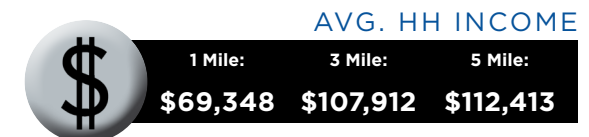
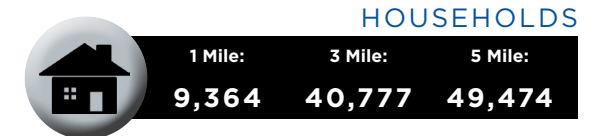
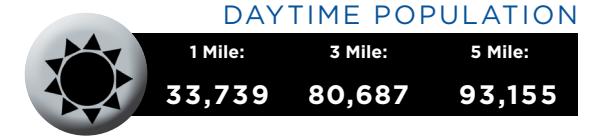


28TH STREET RETAIL AVAILABLE

1693 28th Street, Boulder, Colorado



DEMOGRAPHICS



PROPERTY OVERVIEW:

- 2,395 SF retail space available for long term sublease through 2030
- Finished restaurant space with 28th Street visibility
- Great Central Boulder location!
- Abundant parking
- 1 block from new Google campus
- Across from 28th Street Mall

Rich Hobbs

720 287 6865

hobbs@creginc.com

Eli Boymel

720 287 6862

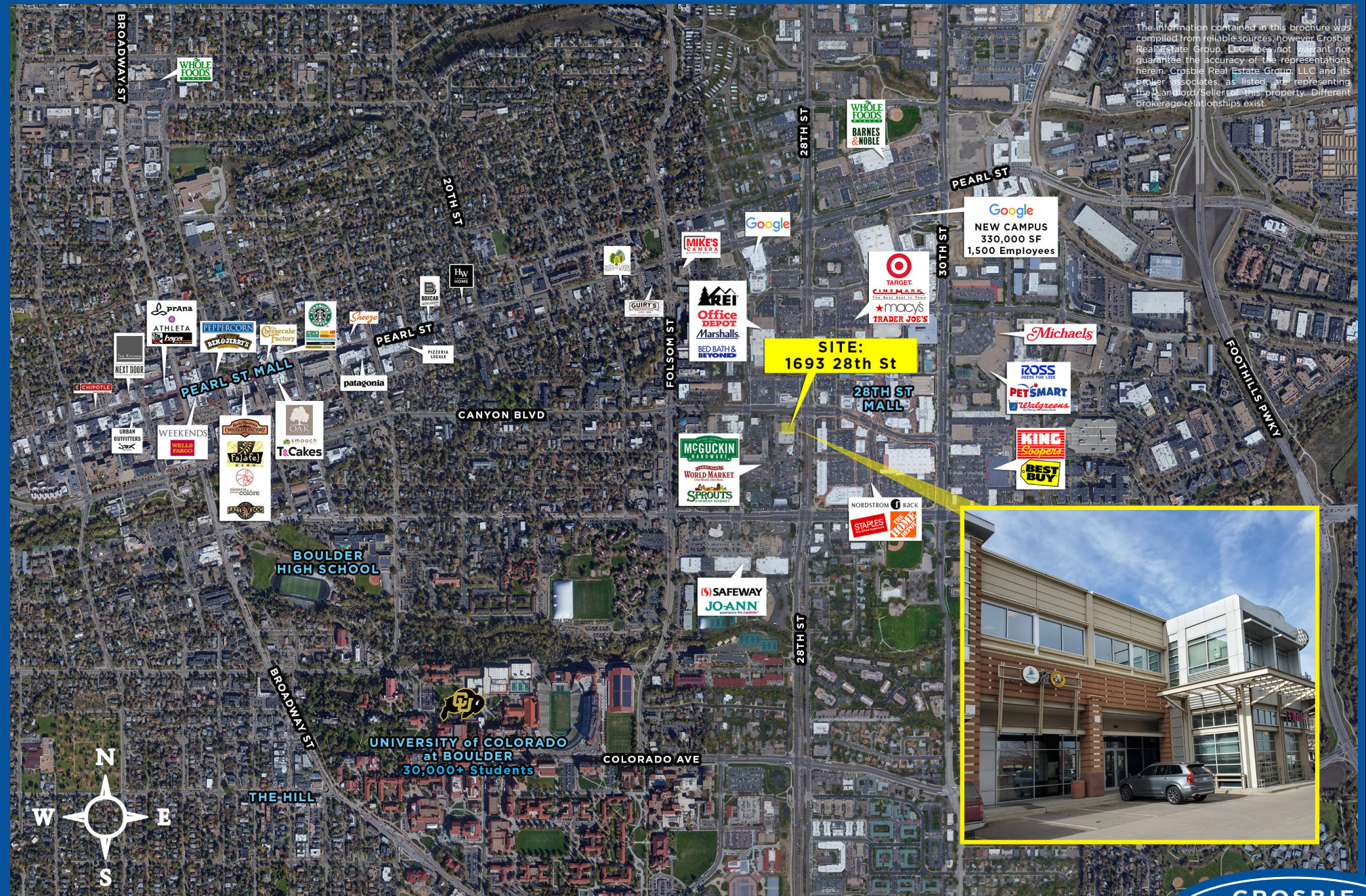
eboymel@creginc.com

**CROSBIE
REAL ESTATE
GROUP**

28TH STREET RETAIL AVAILABLE

1693 28th Street, Boulder, Colorado

The information contained in this brochure was compiled from reliable sources, however Crosbie Real Estate Group, LLC does not warrant nor guarantee the accuracy of the representations herein. Crosbie Real Estate Group, LLC and its broker associates, as listed, are representing the Landlord/Seller of this property. Different brokerage relationships exist.



SITE:
1693 28th St

Google
NEW CAMPUS
330,000 SF
1,500 Employees

Target
CINEMARK
MACYS
TRADER JOE'S

Michaels

ROSS
PETS MART
Wagyu

KING
Soopers
BEST BUY

NORDSTROM RACK
STAPLES

Office DEPOT
Marshalls
BED BATH & BEYOND

McGUCKIN
WORLD MARKET
SPROUTS

SAFeway
JO-ANN

prAna
ATHLETA
PEPPER CORN
BREADSTREET
Starbucks
Shoegz
patagonia

WEEKENDS
WILCO'S FARGO
T&Cakes
OAK
smooch
Tajal
LANE BROS



Rich Hobbs
720 287 6865 | hobbs@creginc.com

Eli Boymel
720 287 6862 | eboymel@creginc.com

