

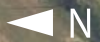
**AVISON  
YOUNG**

Oakview Elementary School

**LAND FOR SALE**

Green Oaks Parkway

Holly Springs New Hill Road



11501

**Holly Springs New Hill Road**

Holly Springs, NC 27539

Partnership. Performance.

## Opportunity

Type	Commercial Land
Land Size	±1.52 acres
Location	Located at the intersection of Holly Springs New Hill Road and Green Oaks Parkway, near Highway 55
Zoning	Currently R-30; will need to be rezoned through the Town of Holly Springs for commercial use
Price	Call for details

## Highlights

- Near Oakview Elementary School and Holly Springs High School
- Less than one mile from numerous retail amenities at Holly Springs Town Center
- Easy access to Highway 55, I-540 and US-1
- Potential for larger assemblage
- The Town of Holly Springs and Wake County have the ability to offer incentives to companies that create well-paying new jobs and make substantial capital investment in the community

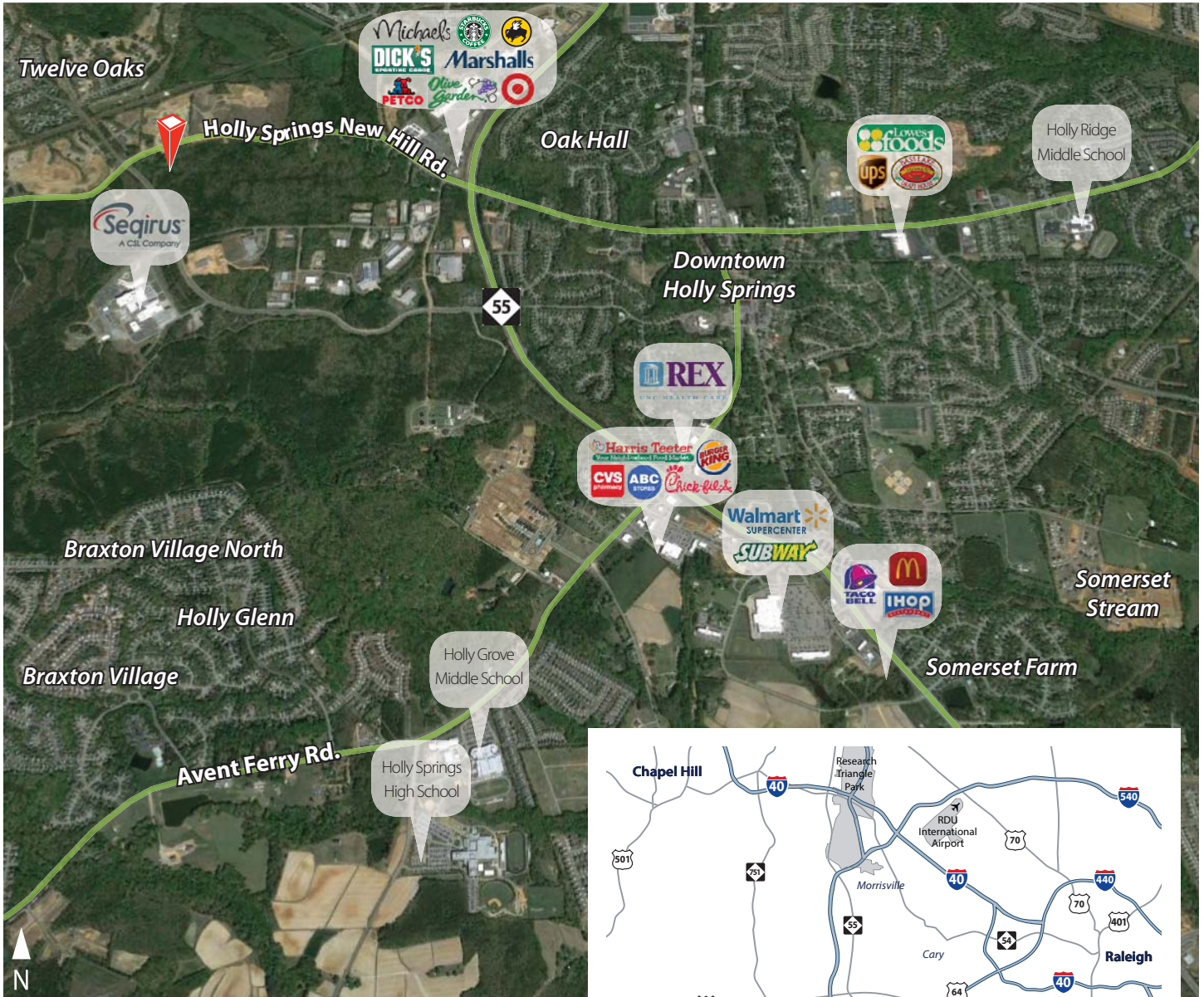


**Tara Kreider**  
Principal, Capital Markets  
919.719.8189  
tara.kreider@avisonyoung.com



# 11501

## Holly Springs New Hill Road Holly Springs, NC 27539



### Location

Located in the high-growth areas of Holly Springs and Apex, near numerous residential developments and retail amenities. Easy access to the area's main transportation corridors.



**Tara Kreider**  
Principal, Capital Markets  
919.719.8189  
tara.kreider@avisonyoung.com