

# E/S Old Brickyard Road

Irmo, South Carolina

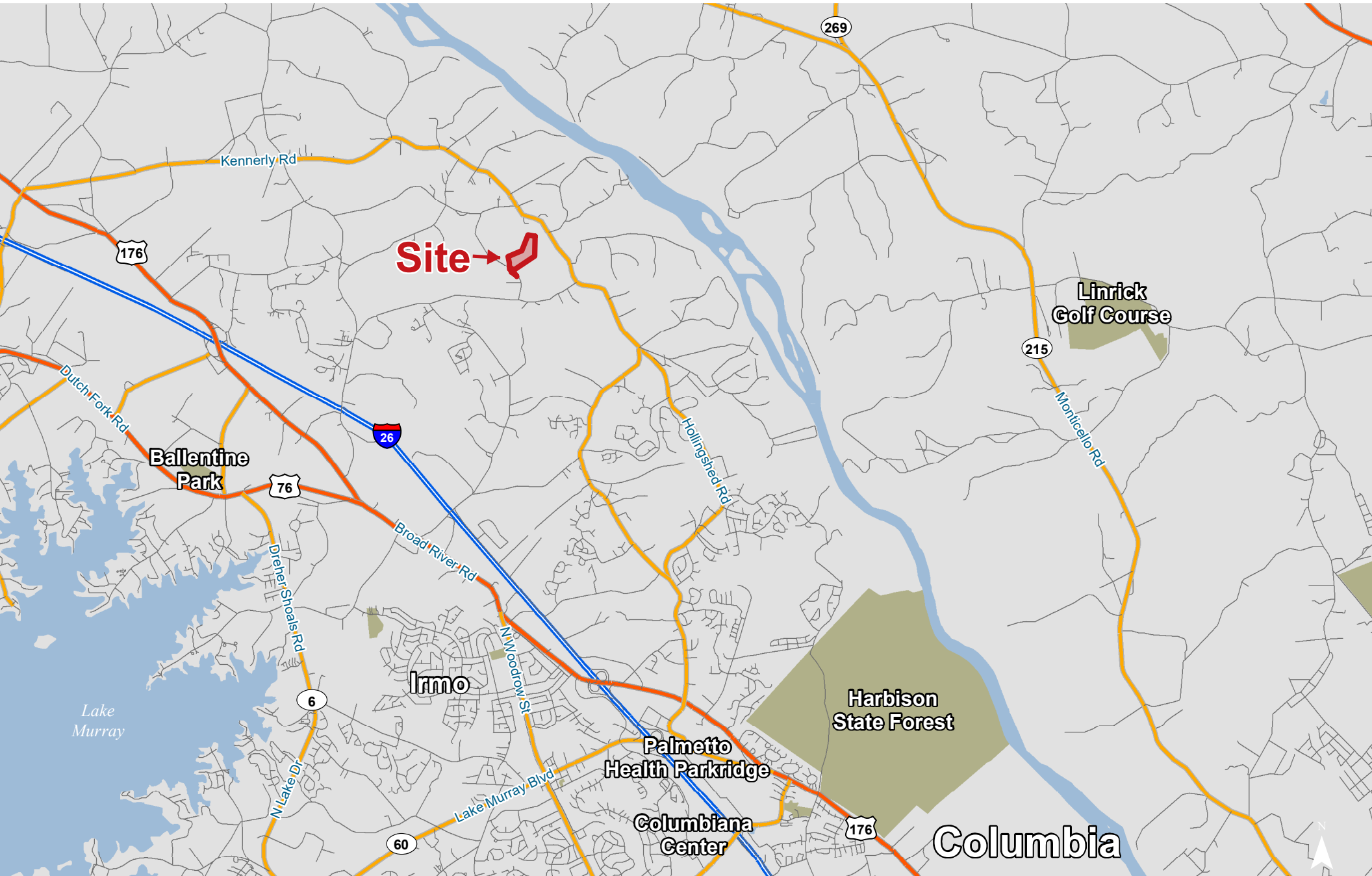
**Lee Bussell, Jr.**

+1 803 744 9865 • [lbussell@naicolumbia.com](mailto:lbussell@naicolumbia.com)

## Property Features

- ±25.80 Acres for sale in Irmo
- School District 5
- Old Brickyard Road
- Dutch Fork Area
- Sales Price: \$387,000 (\$15,000/acre)

# Location

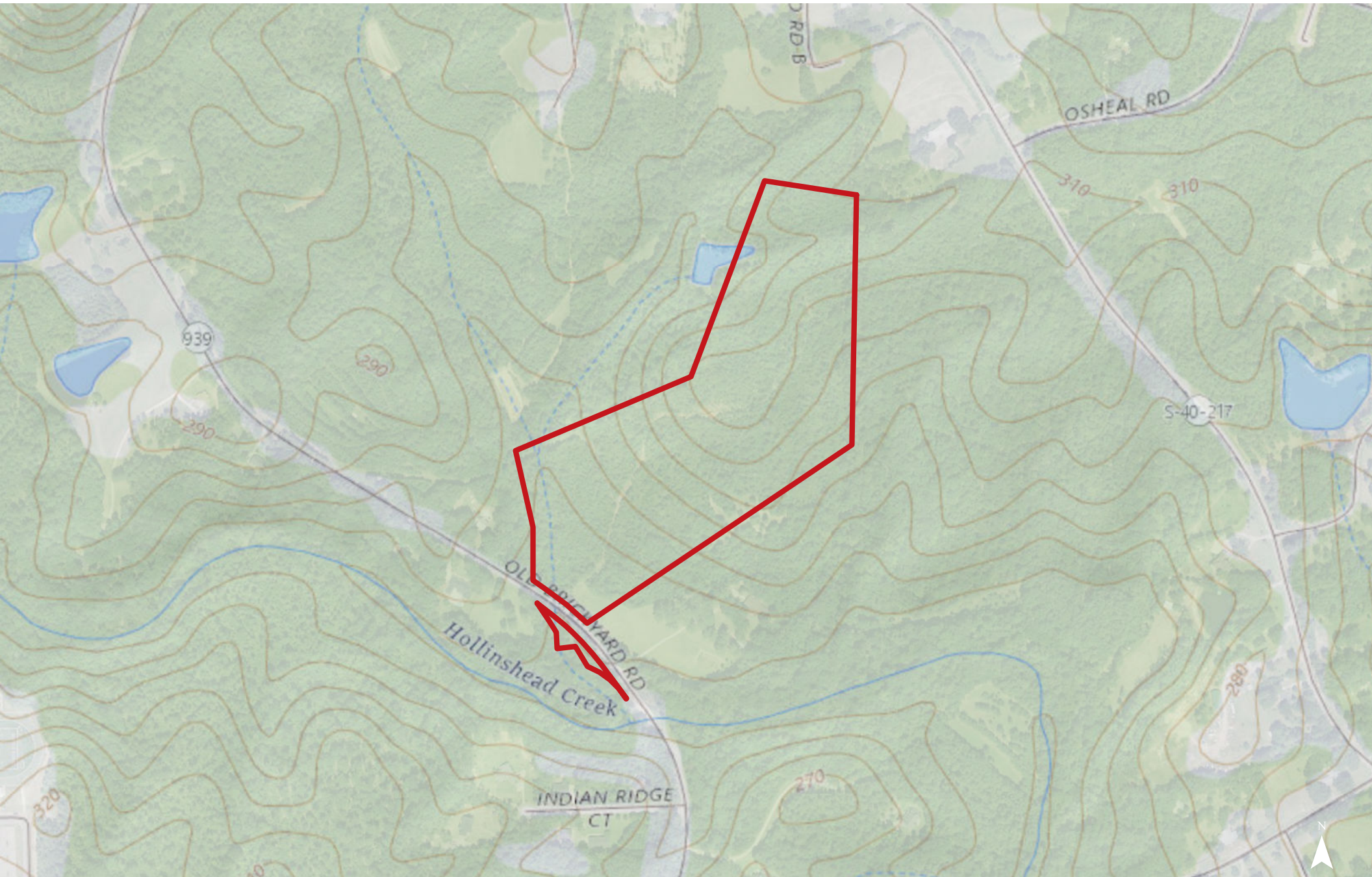


Map Updated: Thursday, September 26, 2019. This information submitted is not guaranteed. Although obtained from reliable sources, all information should be confirmed prior to use or reliance upon the information. This document may not be reproduced in whole or in part without the express written consent of NAI Avant.



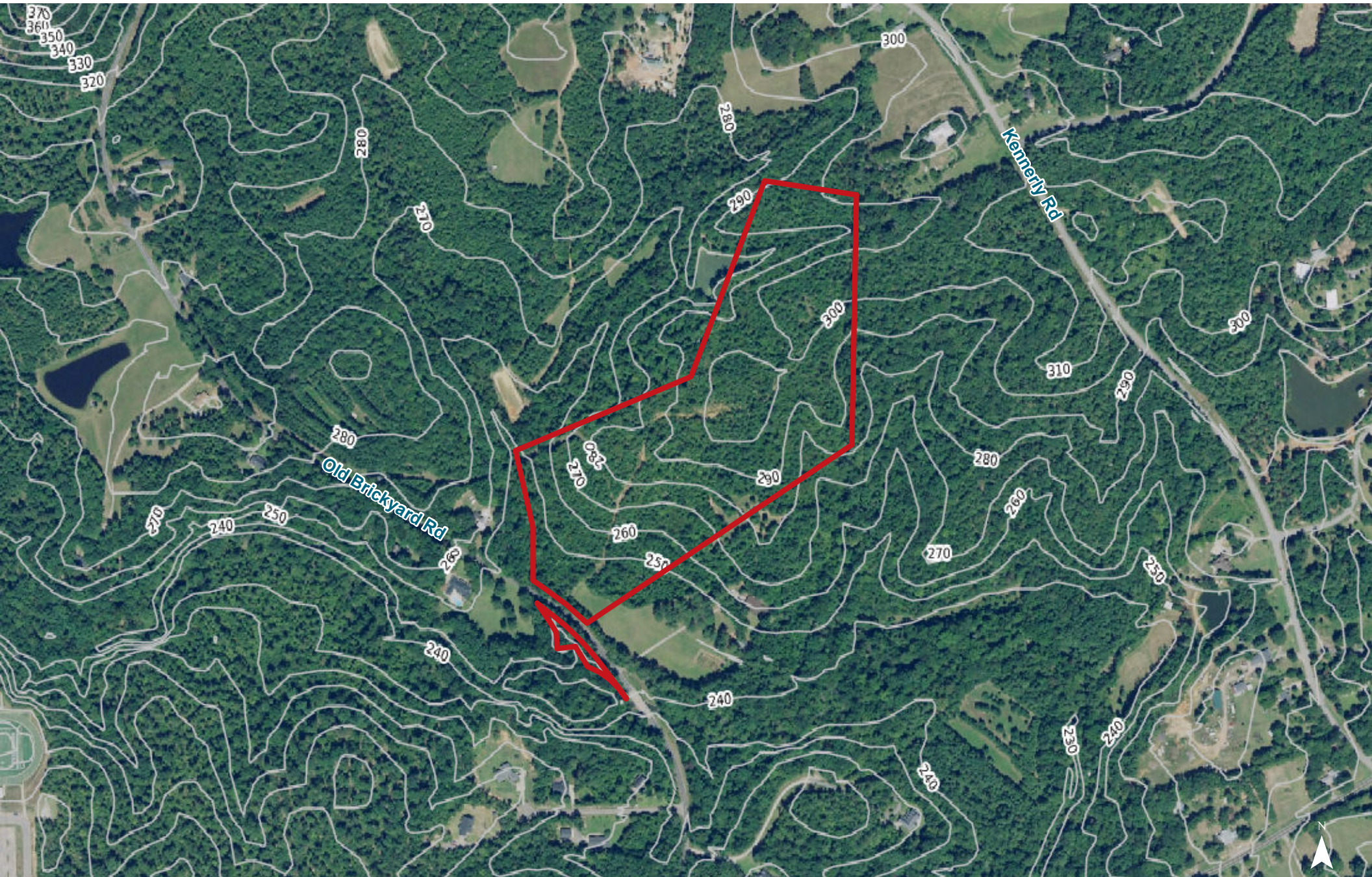
Map Updated: Thursday, September 26, 2019. This information submitted is not guaranteed. Although obtained from reliable sources, all information should be confirmed prior to use or reliance upon the information. This document may not be reproduced in whole or in part without the express written consent of NAI Avant.

# Topographical Map



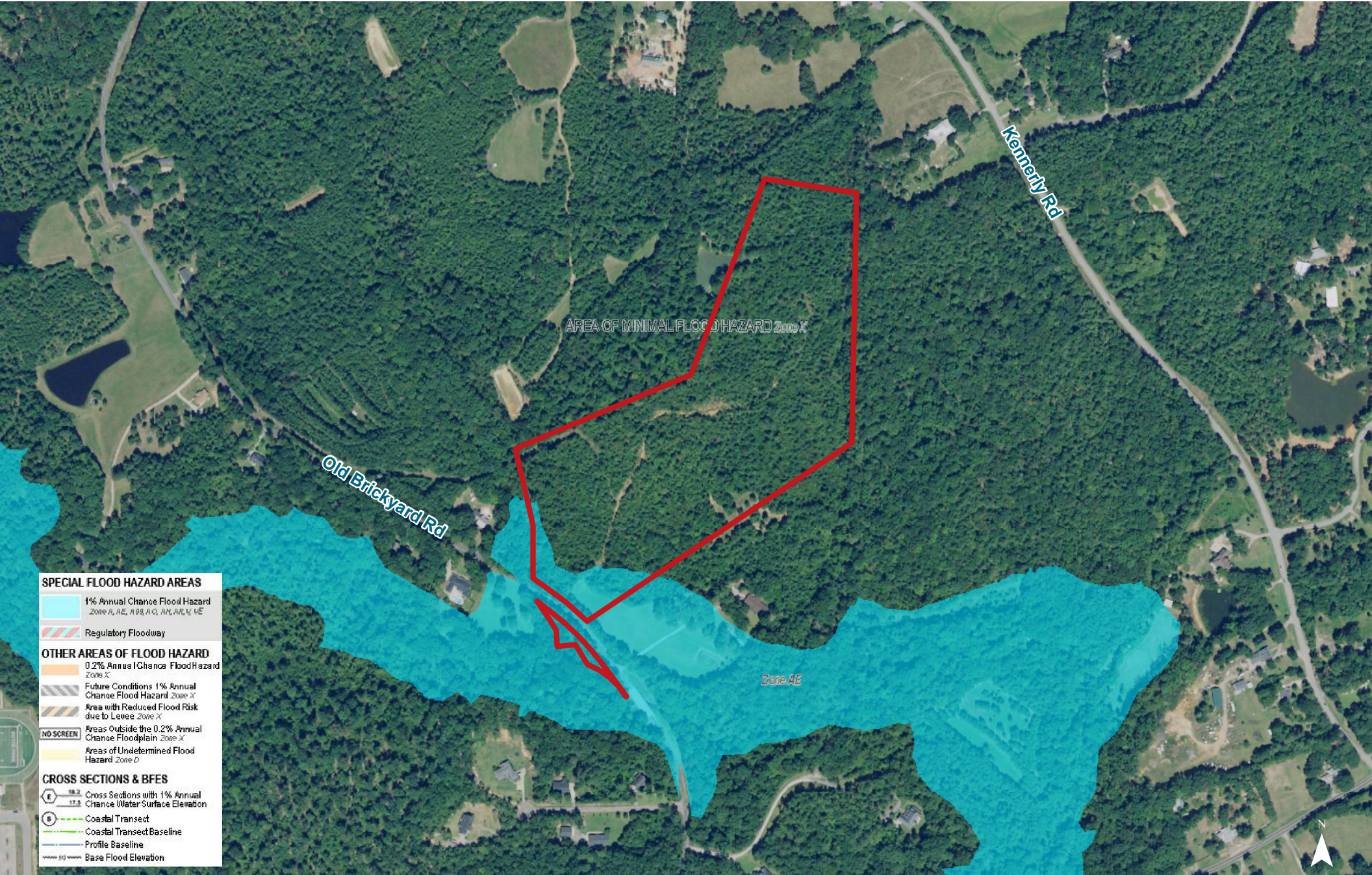
Map Updated: Thursday, September 26, 2019. This information submitted is not guaranteed. Although obtained from reliable sources, all information should be confirmed prior to use or reliance upon the information. This document may not be reproduced in whole or in part without the express written consent of NAI Avant.

# Topographical Map: 10' Contours

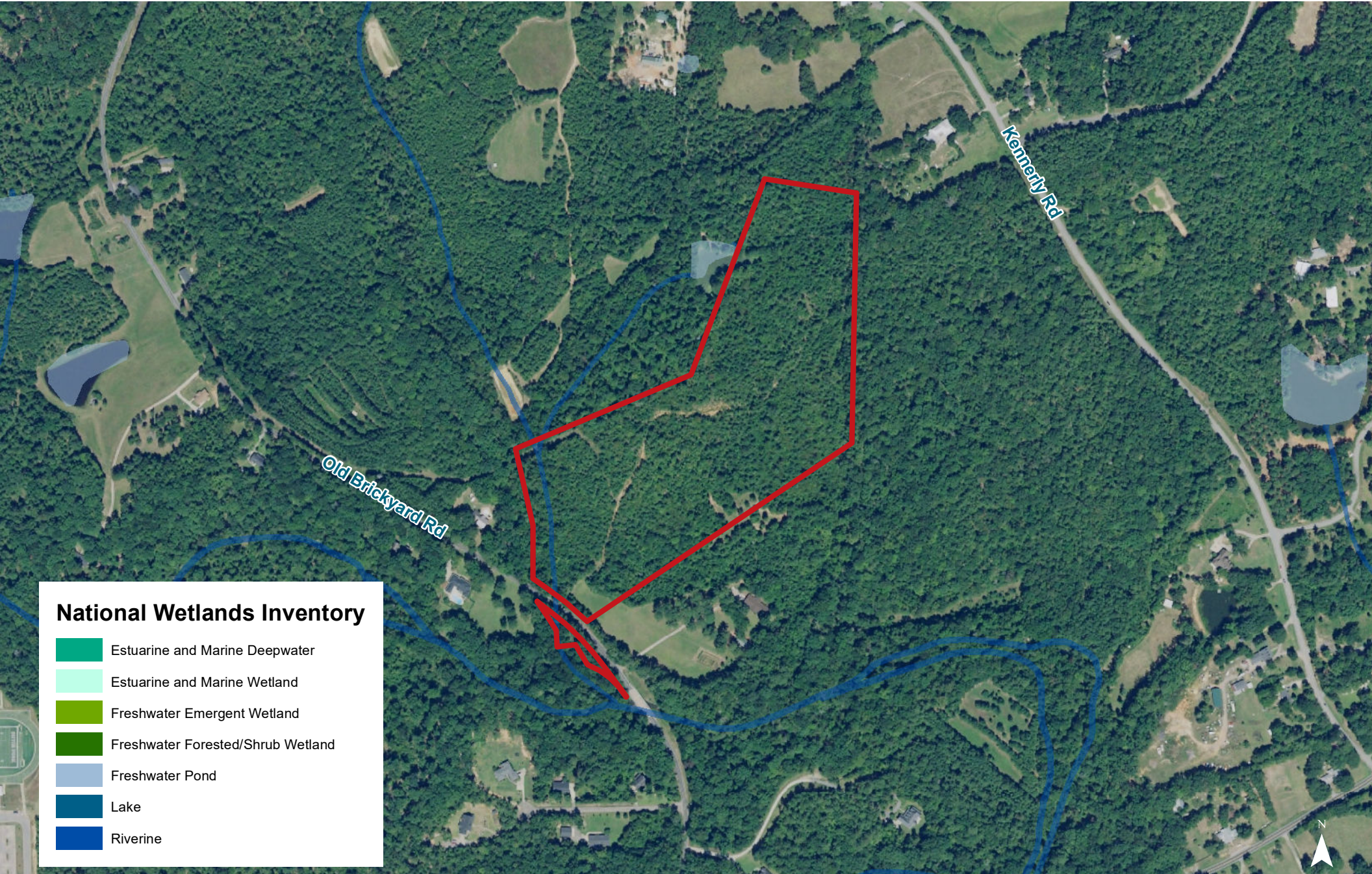


Map Updated: Thursday, September 26, 2019. This information submitted is not guaranteed. Although obtained from reliable sources, all information should be confirmed prior to use or reliance upon the information. This document may not be reproduced in whole or in part without the express written consent of NAI Avant.

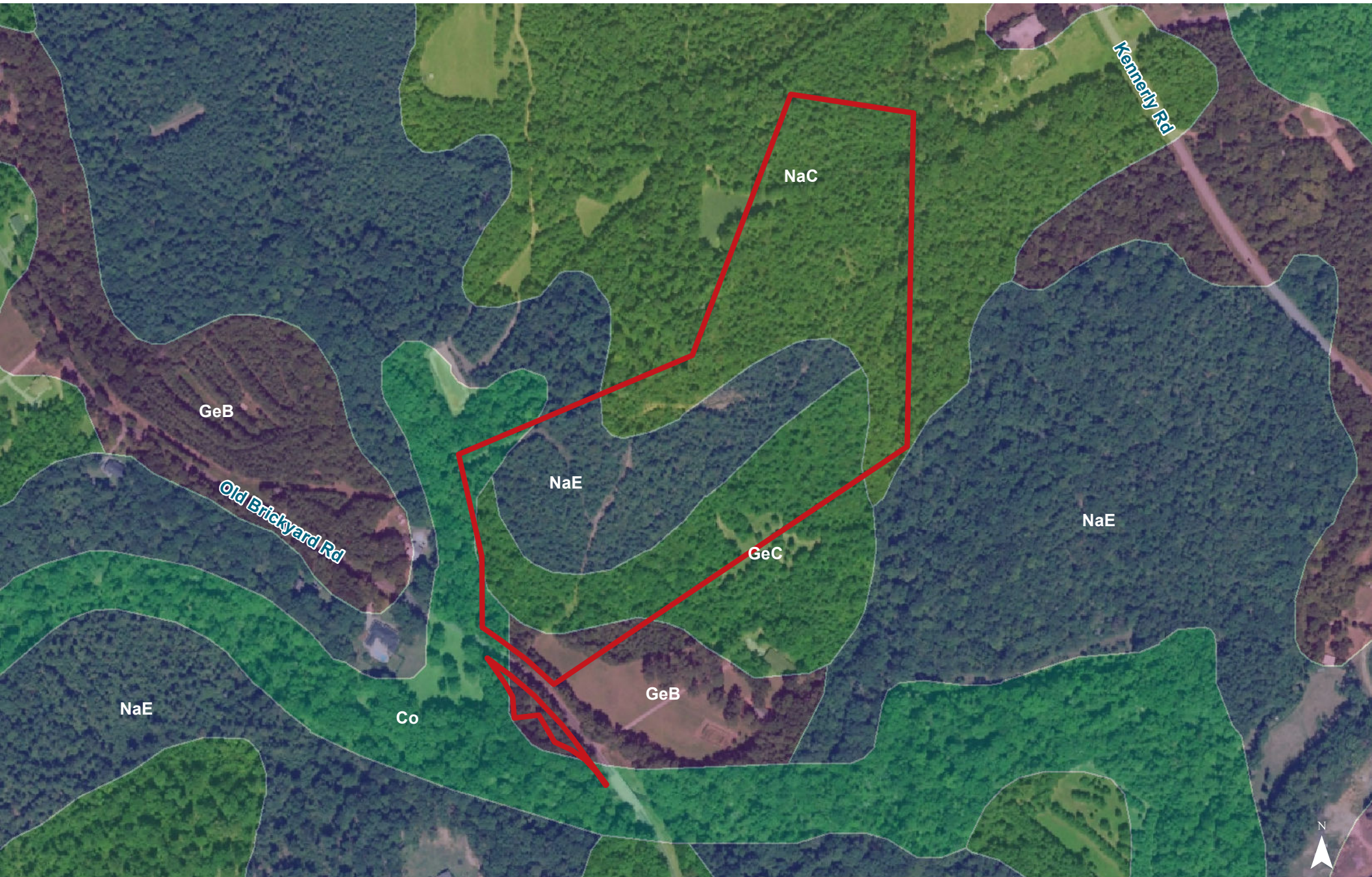
# FEMA National Flood Hazard Layer



Map Updated: Thursday, September 26, 2019. This information submitted is not guaranteed. Although obtained from reliable sources, all information should be confirmed prior to use or reliance upon the information. This document may not be reproduced in whole or in part without the express written consent of NAI Avant.



Map Updated: Thursday, September 26, 2019. This information submitted is not guaranteed. Although obtained from reliable sources, all information should be confirmed prior to use or reliance upon the information. This document may not be reproduced in whole or in part without the express written consent of NAI Avant.



Map Updated: Thursday, September 26, 2019. This information submitted is not guaranteed. Although obtained from reliable sources, all information should be confirmed prior to use or reliance upon the information. This document may not be reproduced in whole or in part without the express written consent of NAI Avant.



# Map Unit Description (Brief, Generated)

Richland County, South Carolina

[Minor map unit components are excluded from this report]

**Map unit:** Co - Congaree loam

**Component:** Tawcaw (85%)

*The Tawcaw component makes up 85 percent of the map unit. Slopes are 0 to 2 percent. This component is on flood plains on coastal plains. The parent material consists of clayey alluvium. Depth to a root restrictive layer is greater than 60 inches. The natural drainage class is somewhat poorly drained. Water movement in the most restrictive layer is low. Available water to a depth of 60 inches is high. Shrink-swell potential is low. This soil is occasionally flooded. It is not ponded. A seasonal zone of water saturation is at 18 inches during January, February, March, April, November, December. Organic matter content in the surface horizon is about 4 percent. Nonirrigated land capability classification is 3w. This soil does not meet hydric criteria.*

**Map unit:** GeB - Georgeville silt loam, 2 to 6 percent slopes

**Component:** Georgeville (85%)

*The Georgeville component makes up 85 percent of the map unit. Slopes are 2 to 6 percent. This component is on interfluves, piedmonts. The parent material consists of residuum weathered from metavolcanics and/or residuum weathered from metasedimentary rock and/or residuum weathered from slate. Depth to a root restrictive layer is greater than 60 inches. The natural drainage class is well drained. Water movement in the most restrictive layer is moderately high. Available water to a depth of 60 inches is high. Shrink-swell potential is low. This soil is not flooded. It is not ponded. There is no zone of water saturation within a depth of 72 inches. Organic matter content in the surface horizon is about 1 percent. Nonirrigated land capability classification is 2e. This soil does not meet hydric criteria.*

**Map unit:** NaC - Nason silt loam, 6 to 10 percent slopes

**Component:** Nason (100%)

*The Nason component makes up 100 percent of the map unit. Slopes are 6 to 10 percent. This component is on hillslopes on uplands. The parent material consists of clayey residuum weathered from slate. Depth to a root restrictive layer, bedrock, paralithic, is 40 to 60 inches. The natural drainage class is well drained. Water movement in the most restrictive layer is moderately high. Available water to a depth of 60 inches is moderate. Shrink-swell potential is moderate. This soil is not flooded. It is not ponded. There is no zone of water saturation within a depth of 72 inches. Organic matter content in the surface horizon is about 2 percent. Nonirrigated land capability classification is 3e. This soil does not meet hydric criteria.*