

# Great location with great visibility. \$288,000

## JUST OFF I-77 OFF RAMP STATESVILLE, NC

Statesville, NC 28625

Equi-



+/- 3,200 sq. ft. building that could have uses for retail, automotive, restaurant, and light industrial. Zoned Heavy Industrial. Adjacent to a Ramada Inn at the northbound off ramp at Exit 49A I-77 on US 70 east in Statesville, NC. This is the first Statesville exit coming north on I-77 from Charlotte and Lake Norman. US 70 has been 4-laned between Statesville and Salisbury and is experience good commercial growth and interest. The building is on .68 acres completely fence with approximately 20 parking spaces. Currently used for automotive repair by the owner since 2012. Owner retiring. **\$288,000**

For more information or to schedule a tour, please contact:

**Frank Harmon**

fharmon@equitycp.com

704-799-9202 Office

704-677-5320 Cell

114 Morlake Dr.  
Suite 104  
Mooresville, NC

Office 704-799-9202

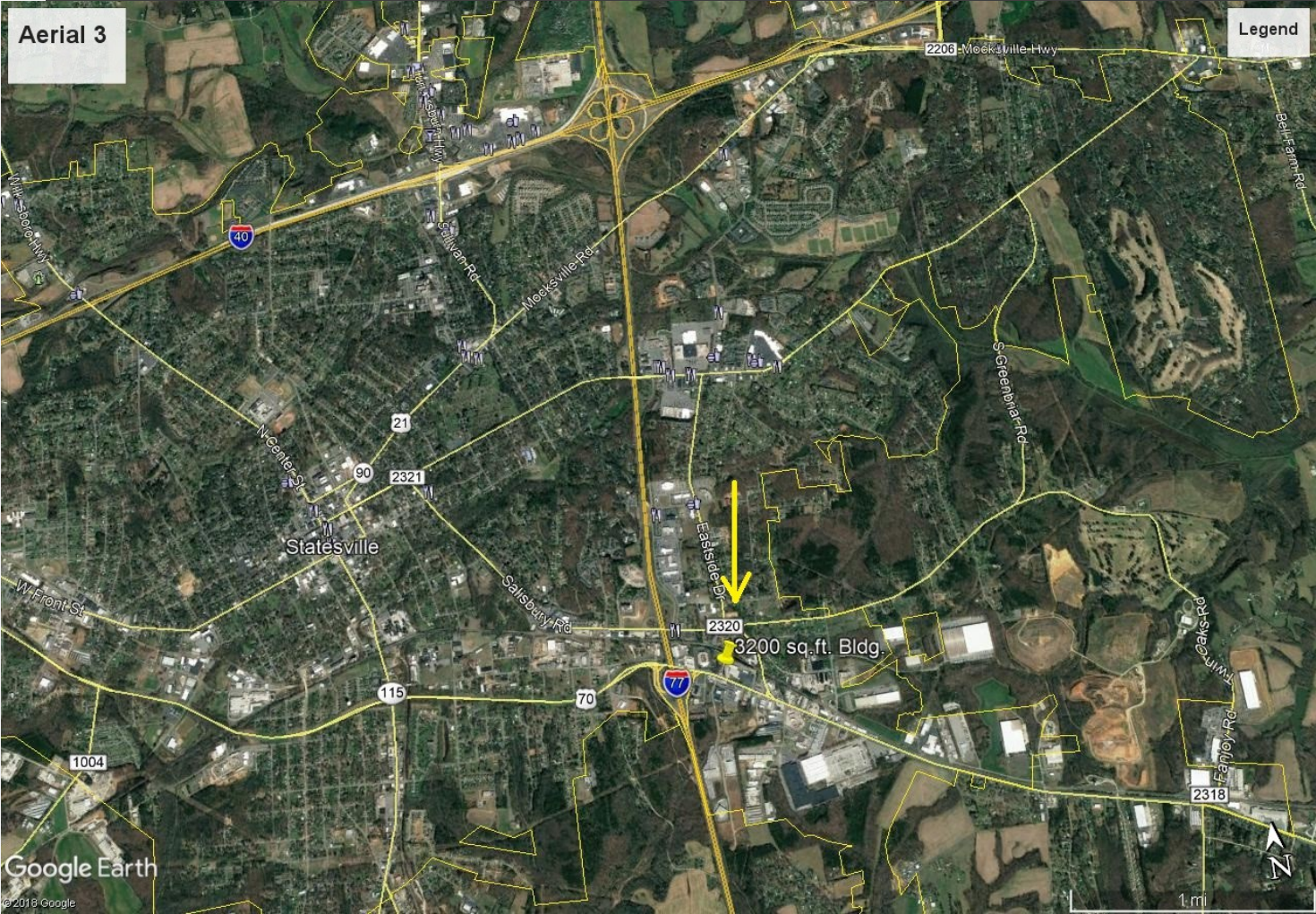
EquityCP.com



**Equity Commercial Properties**



# Easy Access from I-77



## STRATEGIC LOCATION



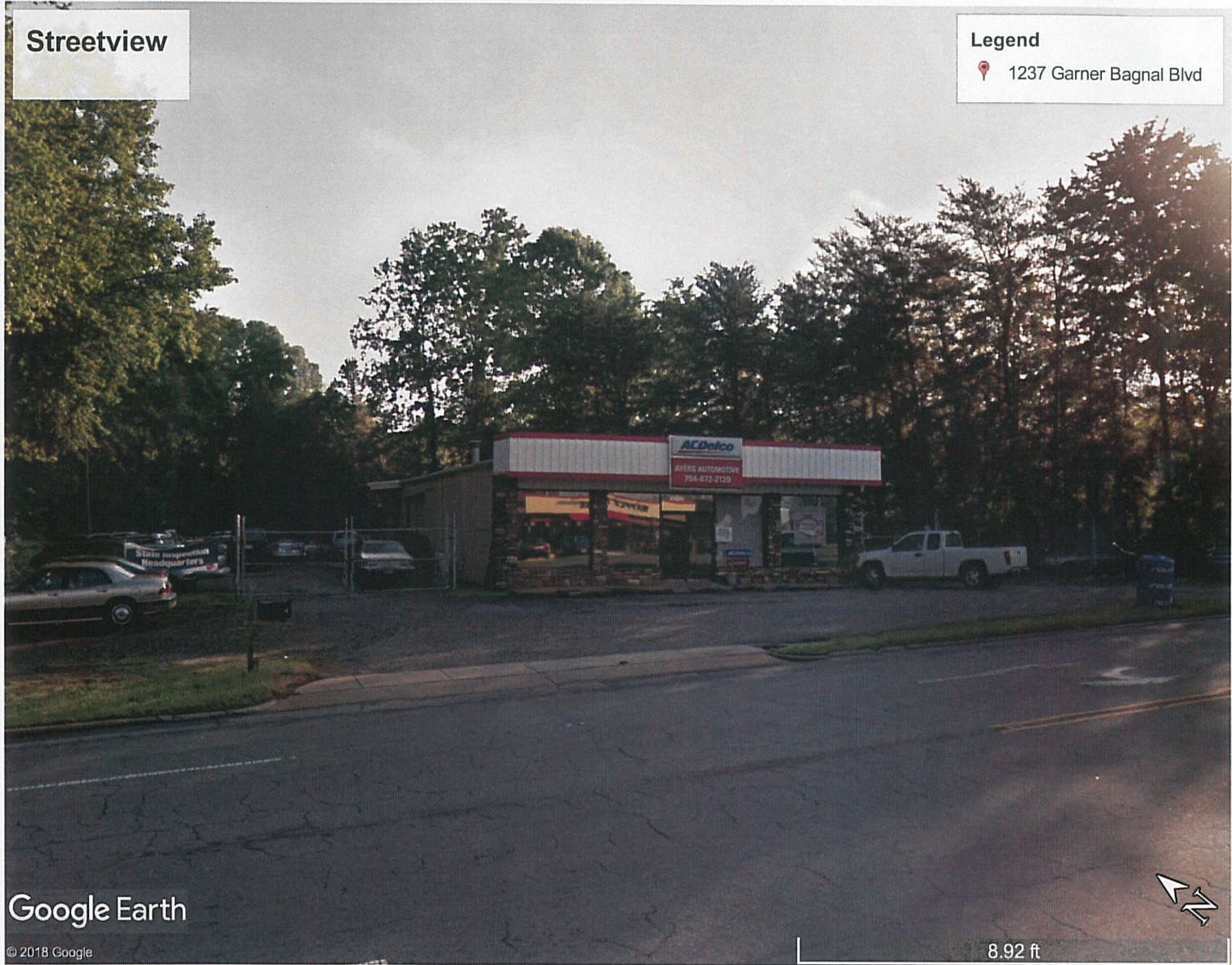
**Equity Commercial Properties**

114 Morlake Dr.  
Suite 104  
Mooresville, NC

Office 704-799-9202  
EquityCP.com



# STREET VIEW –280' FRONTAGE



**Equity Commercial Properties**

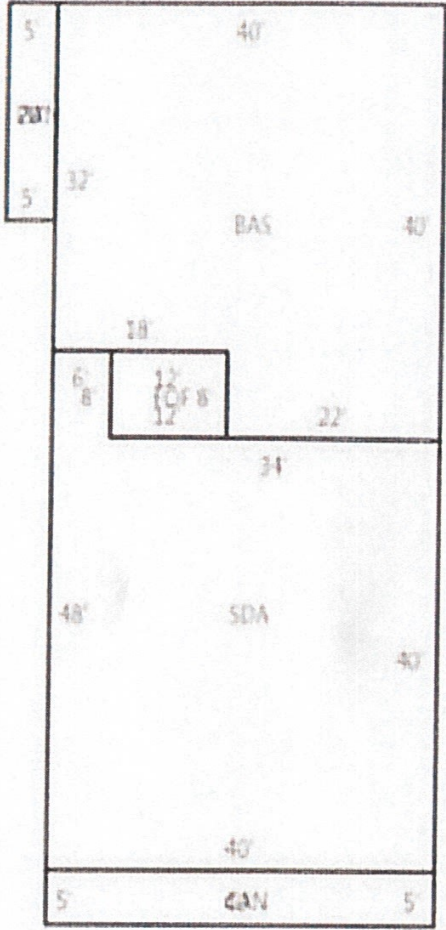
114 Morlake Dr.  
Suite 104  
 Mooresville, NC

Office 704-799-9202  
EquityCP.com



**FLOOR PLAN**

40'



80'

3200 sq ft