

Results Driven Retail Solutions<sup>SM</sup>

**Barnard Commercial**  
Real Estate

# Sunwest Plaza

1280—1400 SW Oak Street, Hillsboro

View Online:



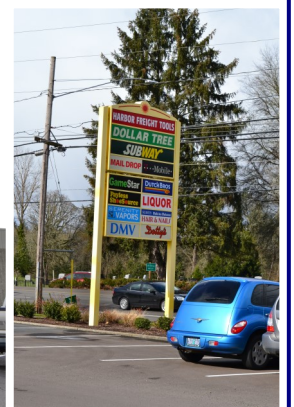
Sunwest is a Winco anchored center with Dollar Tree and Harbor Freight Tools as co anchors. This center is at the juncture of SW Baseline and SW Oak (Hwy 8) at the West end of Hillsboro. Average daily traffic on Hwy 8 just West of the center is 34,000 cars per day. Sunwest has good access, visibility and ample parking. Additional tenants include Subway, Dutch Bros, T Mobile and the DMV.



**Available**  
**1300 Suite D—1,050 SF**  
**\$18.00 SF/Year, NNN**  
  
**Build to Suit Available:**  
**Land Available along SW Walnut**  
**for up to a 7,500 SF Building.**  
  
**Call for pricing**

### Demographics

	1 Mile	3 Mile	5 Mile
<b>Population:</b>	5,669	63,167	115,292
<b>Average HH Income:</b>	\$68,829	\$80,094	\$83,669

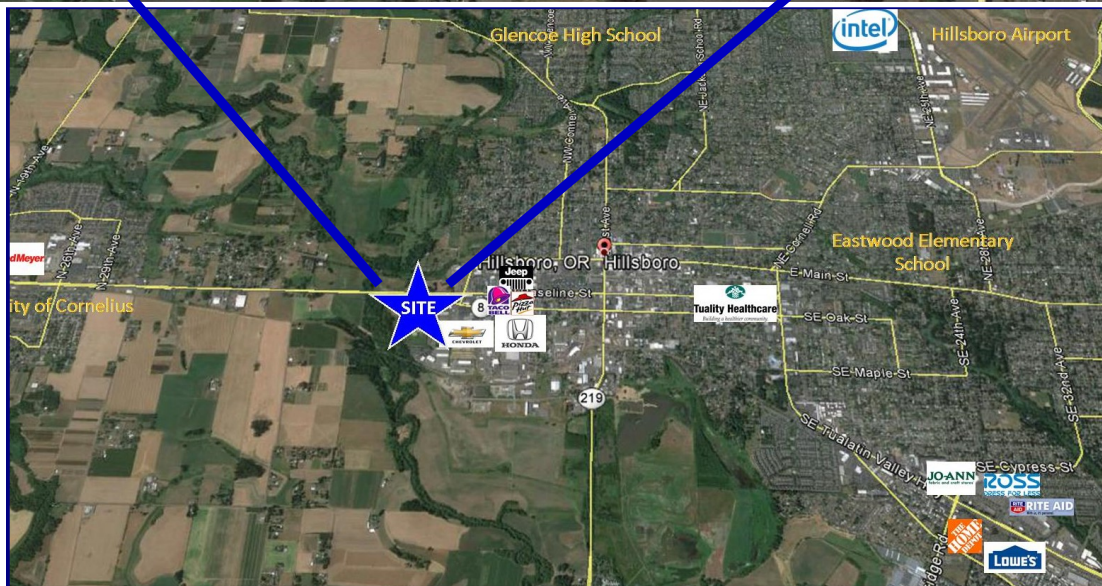


503.675.0900 | Ashley Rhea | Email: [ashley@barnardcommercial.com](mailto:ashley@barnardcommercial.com)  
[www.barnardcommercial.com](http://www.barnardcommercial.com) | Mail: 6650 SW Redwood Lane, Suite 330, Portland OR 97224

All information contained herein was obtained from sources deemed reliable. No guarantee is made with respect to accuracy. Specifications subject to change without notice.

# Sunwest Plaza

1280—1400 SW Oak Street, Hillsboro OR 97123



503.675.0900 | Ashley Rhea | Email: [ashley@barnardcommercial.com](mailto:ashley@barnardcommercial.com)  
[www.barnardcommercial.com](http://www.barnardcommercial.com) | Mail: 6650 SW Redwood Lane, Suite 330, Portland OR 97224

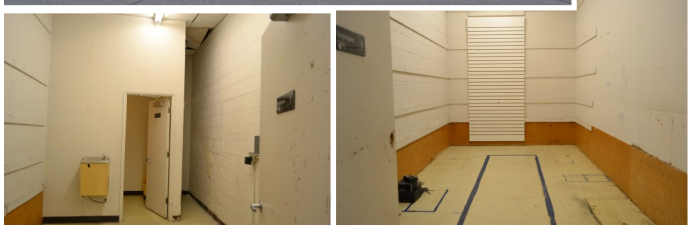
Results Driven Retail Solutions<sup>SM</sup>

**Barnard Commercial**  
Real Estate

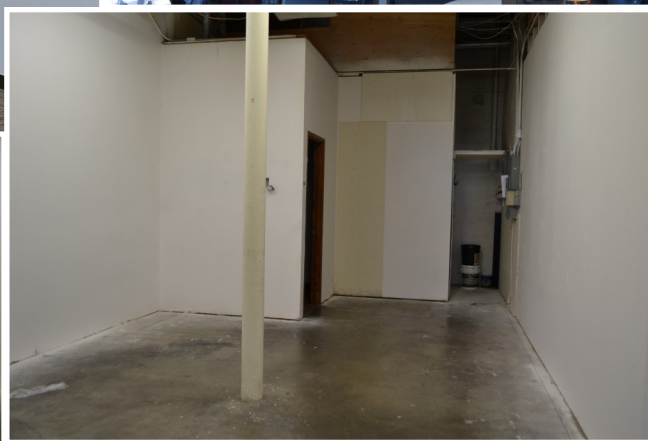
# Sunwest Plaza

1280—1400 SW Oak Street, Hillsboro OR 97123

## 1300 Suite B—3,360 SF



## 1300 Suite D—1,050 SF



503.675.0900 | Ashley Rhea | Email: [ashley@barnardcommercial.com](mailto:ashley@barnardcommercial.com)  
[www.barnardcommercial.com](http://www.barnardcommercial.com) | Mail: 6650 SW Redwood Lane, Suite 330, Portland OR 97224

All information contained herein was obtained from sources deemed reliable. No guarantee is made with respect to accuracy. Specifications subject to change without notice.