

FOR LEASE PREMIER OFFICE / INDUSTRIAL SPACE ON SOUTH TACOMA WAY

AVAILABILITIES: 1,500 - 7,500 SQUARE FEET

RATE TYPE: NNN

10107, 10109, 10111
10025, 10027, 10029
SOUTH TACOMA WAY
LAKEWOOD, WASHINGTON 98499

Directly off I-5, Lakewood Business Park is strategically located in the heart of the Pierce County industrial market, with access via South Tacoma Way and 32nd Avenue South allowing for streamlined ingress and egress.



FOR MORE INFORMATION CALL:
253-237-8331



www.berkeleypartners.com

FOR LEASE

10107, 10109, 10111, 10025, 10027, 10029 SOUTH TACOMA WAY

LAKEWOOD, WASHINGTON 98499

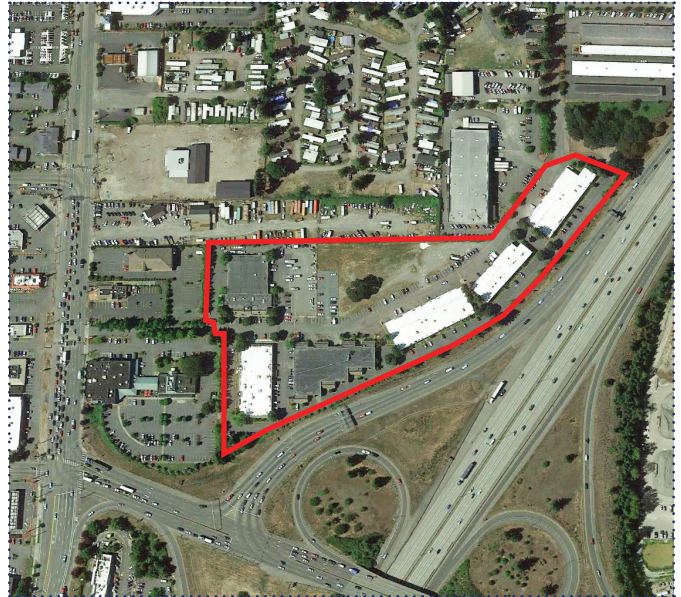
Directly off I-5, Lakewood Business Park is strategically located in the heart of the Pierce County industrial market, with access via South Tacoma Way and 32nd Avenue South allowing for streamlined ingress and egress.

FEATURES

- :: 10'x14' roll up doors
- :: Ample parking
- :: High traffic
- :: Visible from Interstate 5
- :: Close to Port of Tacoma
- :: Zoning: Airport Corridor 1 (AC1)
- :: On-site property management



10107, 10109, 10111 10025, 10027, 10029
South Tacoma Way
Lakewood, Washington 98499



**FOR MORE
INFORMATION
PLEASE CONTACT**

253-237-8331



www.berkeleypartners.com

© 2017 Berkeley Properties. This information has been obtained from sources believed reliable. We have not verified it and make no guarantee, warranty or representation about it. Any projections, opinions, assumptions or estimates used are for example only and do not represent the current or future performance of the property. You and your advisors should conduct a careful, independent investigation of the property to determine to your satisfaction the suitability of the property for your needs. Photos herein are the property of their respective owners and use of these images without the express written consent of the owner is prohibited.