

FOR SALE

LAND



NEQ Oakley Park & Newton

Commerce Township, Michigan

**Insite**
COMMERCIAL

1111 W. Oakley Park Road
Suite 220

Commerce, Michigan 48390
(248) 359-9000 – Detroit Office
(616) 241-2200 – Grand Rapids Office

www.insitecommercial.com

LAND FOR SALE

NEQ Oakley Park & Newton Commerce Township, Michigan

SUMMARY	page 1
AERIALS	pages 2
BOUNDARY/TOPO SURVEY	pages 3
AREA MAPS	page 4
DEMOGRAPHICS	pages 5-6
TRAFFIC COUNTS	page 7



PROPERTY SUMMARY

Location: NEQ Oakley Park & Newton
Commerce Township, MI

Total Land Size: 2.49 Acres (1.77 net)

Sale/Lease Price: \$900,000

Utilities: All available

2012 Property Taxes: \$1,816 Per year

Zoning: R1-B

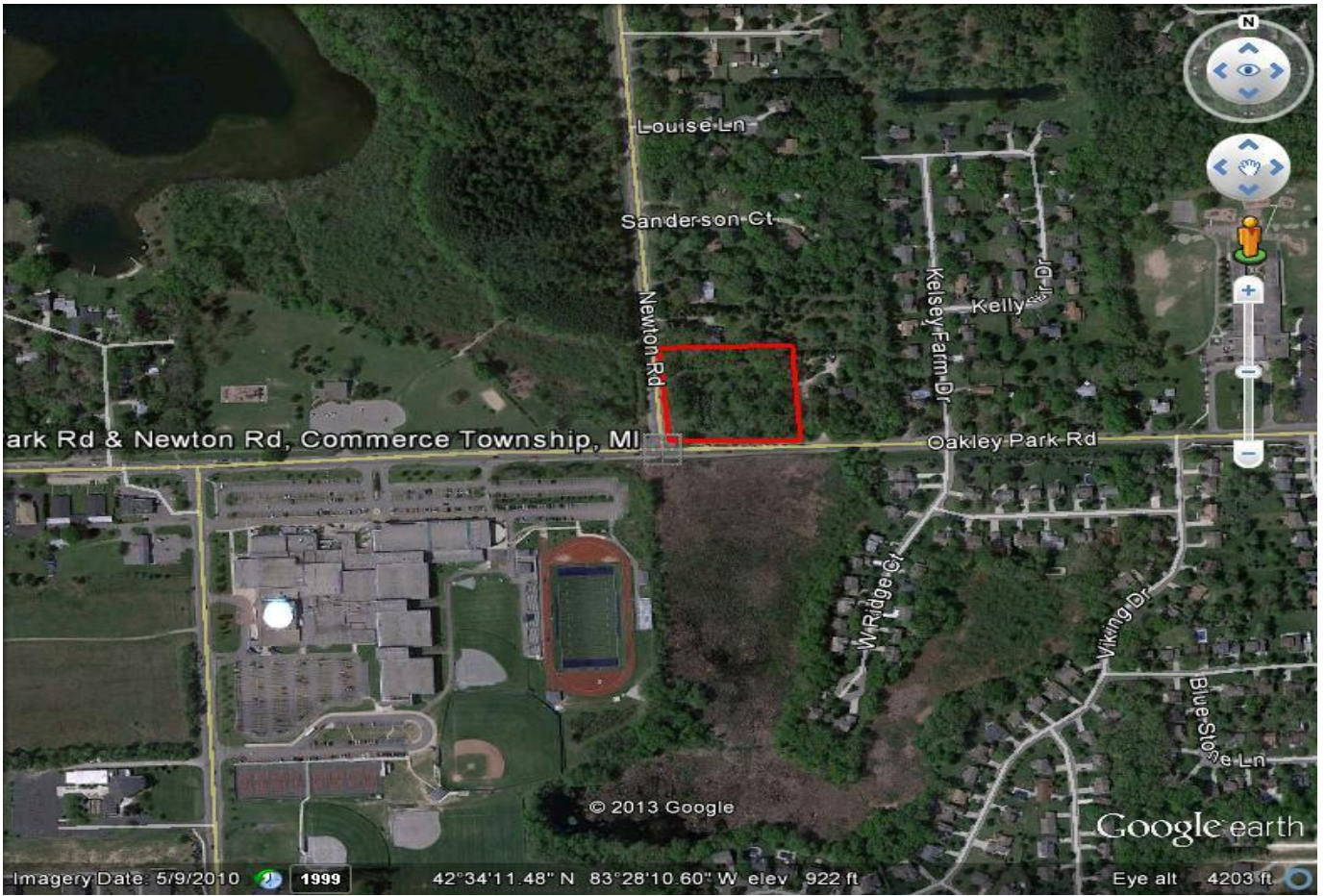
Demographics with a 5 Mile Radius- 2010:

Population:	140,621 Persons
Employment:	
Households:	55,214 Homes
Avg. Household Income:	\$89,498
Traffic Counts:	7,673 VPD on Newton 20,182 VPD on Oakley Park

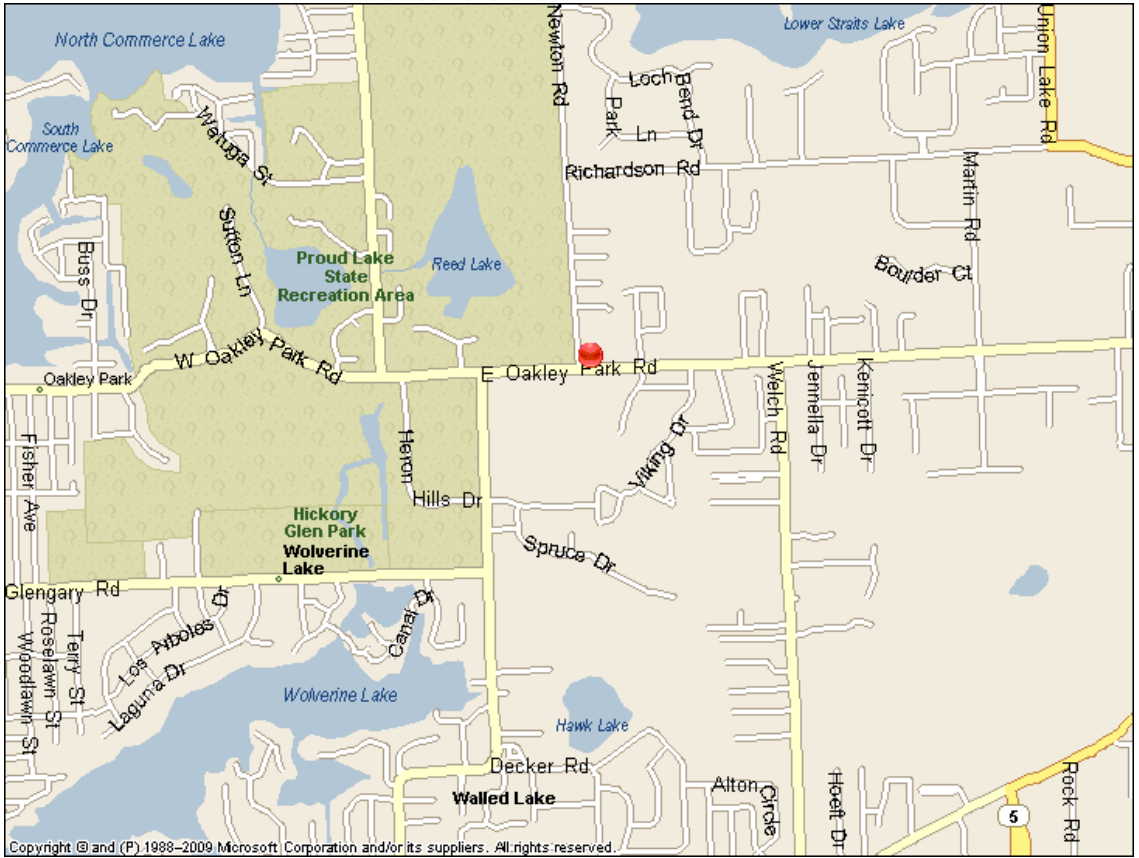
Comments: 2.49 Acres of vacant land located at the NEQ of Oakley Park and Newton Road in Commerce Township. Site has potential for rezoning for commercial use. Great visibility with great access.

For Information Contact:
Randy Thomas
248-359-9000

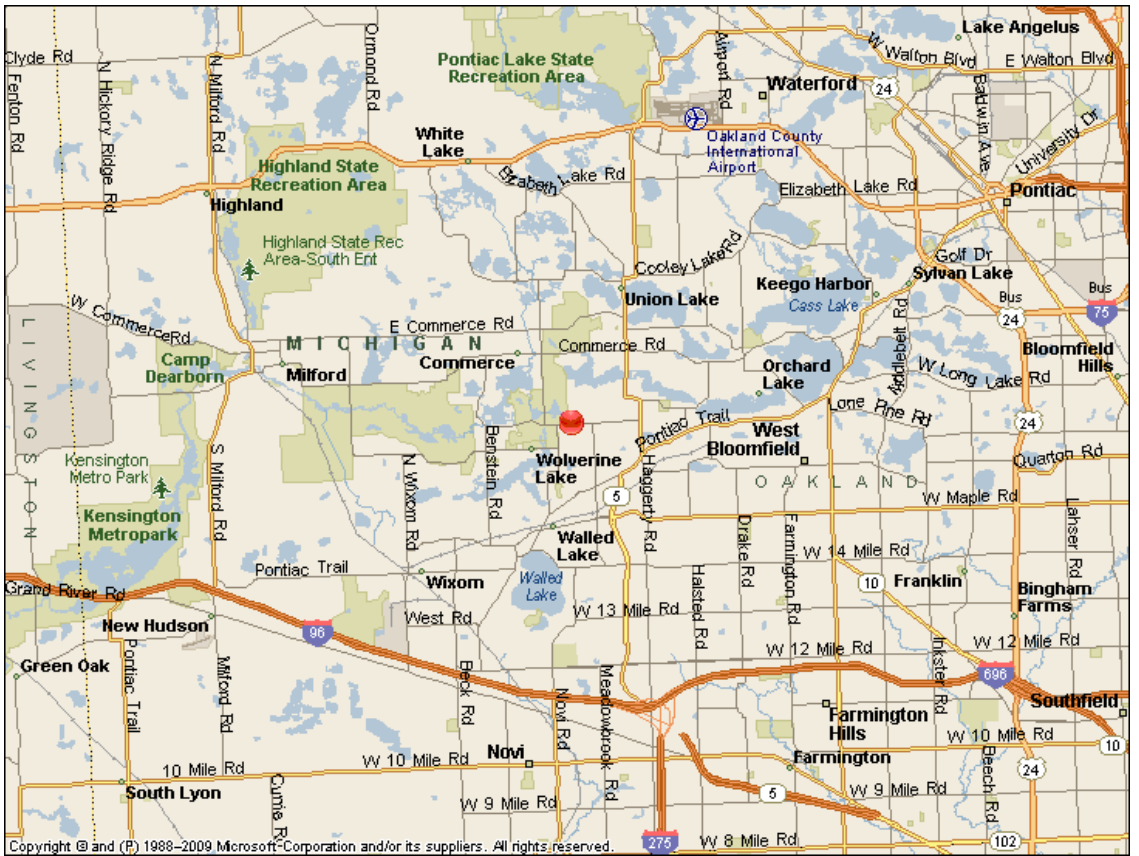




Local Map



Regional Map





Executive Summary

Oakley Park & Newton
Rings: 1, 3, 5 mile radii

Prepared by Randall Thomas
Latitude: 42.570074
Longitude: -83.469483

	1 mile	3 miles	5 miles
Population			
2000 Population	4,677	44,417	136,441
2010 Population	4,608	48,380	138,358
2012 Population	4,681	49,579	140,621
2017 Population	4,798	51,653	144,595
2000-2010 Annual Rate	-0.15%	0.86%	0.90%
2010-2012 Annual Rate	0.70%	1.00%	0.72%
2012-2017 Annual Rate	0.49%	0.82%	0.56%
2012 Male Population	50.9%	49.3%	48.9%
2012 Female Population	49.1%	50.7%	51.1%
2012 Median Age	41.8	41.3	40.5

In the identified area, the current year population is 140,621. In 2010, the Census count in the area was 138,358. The rate of change since 2010 was 0.72% annually. The five-year projection for the population in the area is 144,595 representing a change of 0.56% annually from 2012 to 2017. Currently, the population is 48.9% male and 51.1% female.

Median Age

The median age in this area is 40.5, compared to U.S. median age of 37.5.

Race and Ethnicity

2012 White Alone	93.2%	90.0%	83.0%
2012 Black Alone	1.3%	4.0%	8.0%
2012 American Indian/Alaska Native Alone	0.2%	0.2%	0.2%
2012 Asian Alone	2.7%	3.4%	6.0%
2012 Pacific Islander Alone	0.0%	0.0%	0.0%
2012 Other Race	0.7%	0.5%	0.8%
2012 Two or More Races	1.8%	1.9%	2.1%
2012 Hispanic Origin (Any Race)	2.7%	2.4%	2.9%

Persons of Hispanic origin represent 2.9% of the population in the identified area compared to 16.9% of the U.S. population. Persons of Hispanic Origin may be of any race. The Diversity Index, which measures the probability that two people from the same area will be from different race/ethnic groups, is 34.1 in the identified area, compared to 61.4 for the U.S. as a whole.

Households

2000 Households	1,618	16,418	48,722
2010 Households	1,687	18,511	54,411
2012 Total Households	1,712	18,916	55,214
2017 Total Households	1,783	19,770	57,002
2000-2010 Annual Rate	0.43%	1.21%	1.11%
2010-2012 Annual Rate	0.66%	0.97%	0.85%
2012-2017 Annual Rate	0.59%	0.89%	0.84%
2012 Average Household Size	2.73	2.61	2.53

The household count in this area has changed from 54,411 in 2010 to 55,214 in the current year, a change of 0.85% annually. The five-year projection of households is 57,002, a change of 0.84% annually from the current year total. Average household size is currently 2.53, compared to 2.53 in the year 2010. The number of families in the current year is 37,881 in the specified area.





Executive Summary

Oakley Park & Newton
Rings: 1, 3, 5 mile radii

Prepared by Randall Thomas
Latitude: 42.570074
Longitude: -83.469483

	1 mile	3 miles	5 miles
Median Household Income			
2012 Median Household Income	\$78,767	\$68,753	\$67,846
2017 Median Household Income	\$82,421	\$75,428	\$75,119
2012-2017 Annual Rate	0.91%	1.87%	2.06%
Average Household Income			
2012 Average Household Income	\$91,044	\$88,237	\$89,498
2017 Average Household Income	\$98,803	\$97,511	\$99,704
2012-2017 Annual Rate	1.65%	2.02%	2.18%
Per Capita Income			
2012 Per Capita Income	\$33,303	\$34,102	\$35,208
2017 Per Capita Income	\$36,251	\$37,818	\$39,356
2012-2017 Annual Rate	1.71%	2.09%	2.25%

Households by Income

Current median household income is \$67,846 in the area, compared to \$50,157 for all U.S. households. Median household income is projected to be \$75,119 in five years, compared to \$56,895 for all U.S. households

Current average household income is \$89,498 in this area, compared to \$68,162 for all U.S. households. Average household income is projected to be \$99,704 in five years, compared to \$77,137 for all U.S. households

Current per capita income is \$35,208 in the area, compared to the U.S. per capita income of \$26,409. The per capita income is projected to be \$39,356 in five years, compared to \$29,882 for all U.S. households

Housing			
2000 Total Housing Units	1,666	17,216	51,143
2000 Owner Occupied Housing Units	1,426	14,183	36,950
2000 Renter Occupied Housing Units	190	2,235	11,772
2000 Vacant Housing Units	50	800	2,421
2010 Total Housing Units	1,773	19,844	59,063
2010 Owner Occupied Housing Units	1,474	15,636	40,593
2010 Renter Occupied Housing Units	213	2,873	13,818
2010 Vacant Housing Units	86	1,333	4,652
2012 Total Housing Units	1,791	20,121	59,732
2012 Owner Occupied Housing Units	1,485	15,790	40,790
2012 Renter Occupied Housing Units	228	3,126	14,424
2012 Vacant Housing Units	79	1,205	4,518
2017 Total Housing Units	1,833	20,825	61,305
2017 Owner Occupied Housing Units	1,537	16,525	42,411
2017 Renter Occupied Housing Units	226	3,245	14,591
2017 Vacant Housing Units	70	1,055	4,303

Currently, 68.5% of the 59,732 housing units in the area are owner occupied; 24.1%, renter occupied; and 7.6% are vacant. Currently, in the U.S., 56.5% of the housing units in the area are owner occupied; 32.1% are renter occupied; and 11.4% are vacant. In 2010, there were 59,063 housing units in the area - 68.7% owner occupied, 23.4% renter occupied, and 7.9% vacant. The annual rate of change in housing units since 2010 is 0.50%. Median home value in the area is \$193,766, compared to a median home value of \$157,749 for the U.S. In five years, median value is projected to change by 0.35% annually to \$197,251.





Traffic Count Map - Close Up

Oakley Park & Newton
Ring: 1, 3, 5 Miles

Prepared by Randall Thomas

Latitude: 42.570074

Longitude: -83.469483

