

7689 E Paradise Lane

Unit 1, Building 2



**FOR SALE**

2,440 RSF Industrial Condo Located in the  
Scottsdale Airpark

Michelle Gardner  
602.513.5126  
mgardner@kiddermathews.com

[kiddermathews.com](http://kiddermathews.com)

**km** Kidder  
Mathews

# 7689 E Paradise Lane

Unit 1, Building 2

## Features

<b>AVAILABLE</b>	±2,440 SF
<b>CLEAR HEIGHT</b>	14'
<b>LOADING</b>	10x12 roll door
<b>POWER</b>	225 amp with 120/240 3-phase
<b>PARKING</b>	2 covered reserved and 2 uncovered reserved
<b>ZONING</b>	I-1
<b>IMPROVEMENTS</b>	<ul style="list-style-type: none"><li>- Association is currently planning new exterior paint to buildings 1 &amp; 2</li><li>- Reception, office, and kitchenette</li><li>- Evaporative and/or AC cooled warehouse</li></ul>
<b>ASKING PRICE</b>	\$387,960



Michelle Gardner

602.513.5126

mgardner@kiddermathews.com

[kiddermathews.com](http://kiddermathews.com)

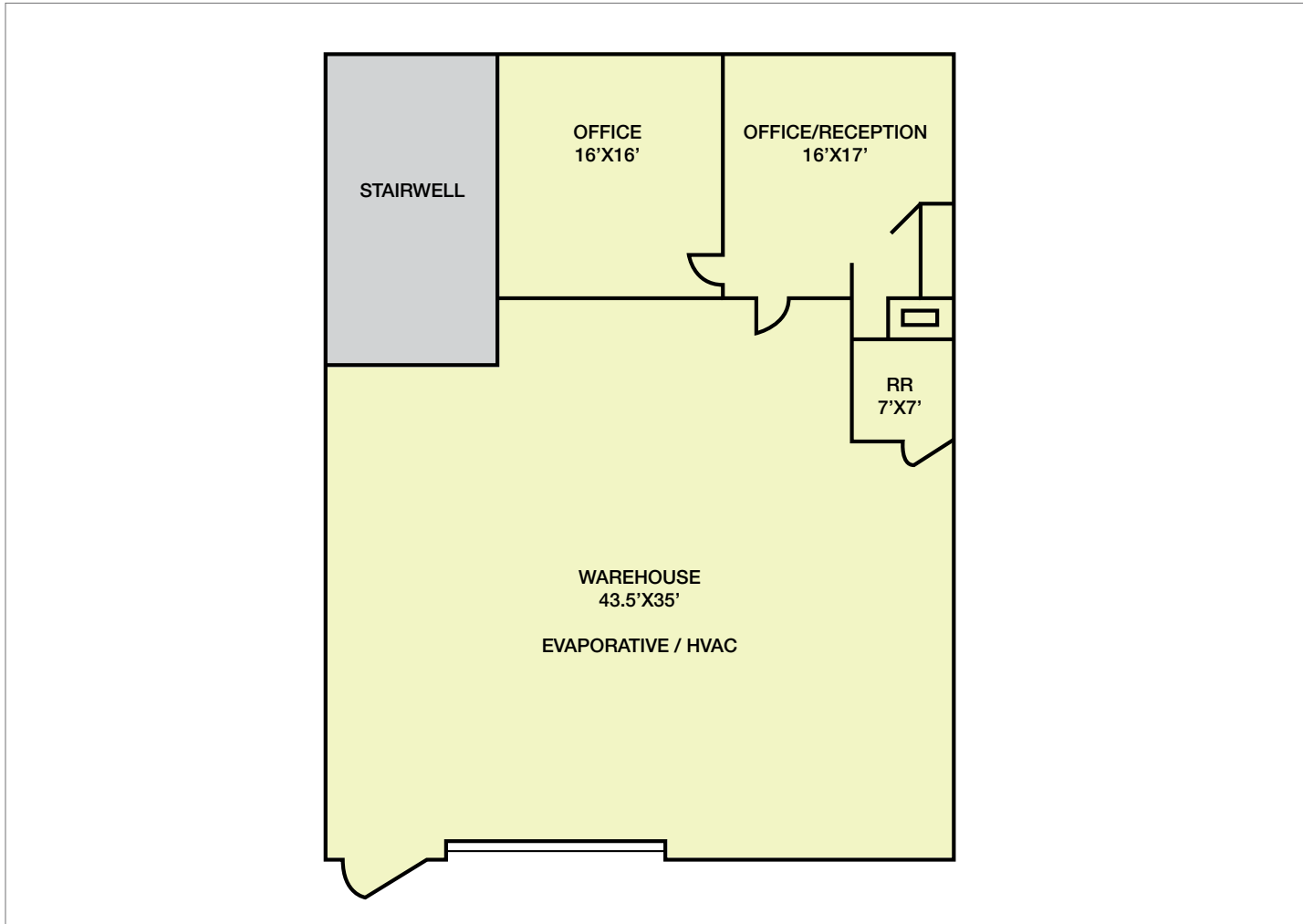


This information supplied herein is from sources we deem reliable. It is provided without any representation, warranty or guarantee, expressed or implied as to its accuracy. Prospective Buyer or Tenant should conduct an independent investigation and verification of all matters deemed to be material, including, but not limited to, statements of income and expenses. Consult your attorney, accountant, or other professional advisor.

# 7689 E Paradise Lane

Unit 1, Building 2

## Floor Plan



### AVAILABLE SPACE

±2,440 SF

Asking Price: \$387,960

**Michelle Gardner**

602.513.5126

mgardner@kiddermathews.com

[kiddermathews.com](http://kiddermathews.com)

