



RAINTREE VILLAGE SHOPPING CENTER

RETAIL SPACE AVAILABLE FOR LEASE

150 Hwy & SW Ward Rd (SEC), Lee's Summit, MO



LEASE RATE: \$14-\$16/SF NNN

DEMOGRAPHICS

	1 mile	3 miles	5 miles
Estimated Population	8,049	25,143	68,490
Avg. Household Income	\$101,873	\$115,543	\$96,128

- 1,602 - 5,231 SF Available For Lease
- 33,340 SF Shopping Center on 8.06 Acres
- Great opportunity to get in at low market rents
- Recent updates completed with no deferred maintenance
- Located off 150 Highway in a growing suburb of Greater Kansas City
- Beautifully maintained neighborhood center
- New Walmart Supercenter and multiple other developments in the immediate vicinity



CLICK HERE TO VIEW MORE LISTING INFORMATION

For More Information Contact:

WILLIAM GLASGOW | 816.412.7394 | wglasgow@blockandco.com

Exclusive Agent





RAINTREE VILLAGE SHOPPING CENTER

RETAIL SPACE AVAILABLE FOR LEASE

150 Hwy & SW Ward Rd (SEC), Lee's Summit, MO

1,602 - 5,231 SF SPACES AVAILABLE

AERIAL





RAINTREE VILLAGE SHOPPING CENTER

RETAIL SPACE AVAILABLE FOR LEASE

150 Hwy & SW Ward Rd (SEC), Lee's Summit, MO

1,602 - 5,231 SF SPACES AVAILABLE

AERIAL





RAINTREE VILLAGE SHOPPING CENTER

RETAIL SPACE AVAILABLE FOR LEASE

150 Hwy & SW Ward Rd (SEC), Lee's Summit, MO

1,602 - 5,231 SF SPACES AVAILABLE

AERIAL





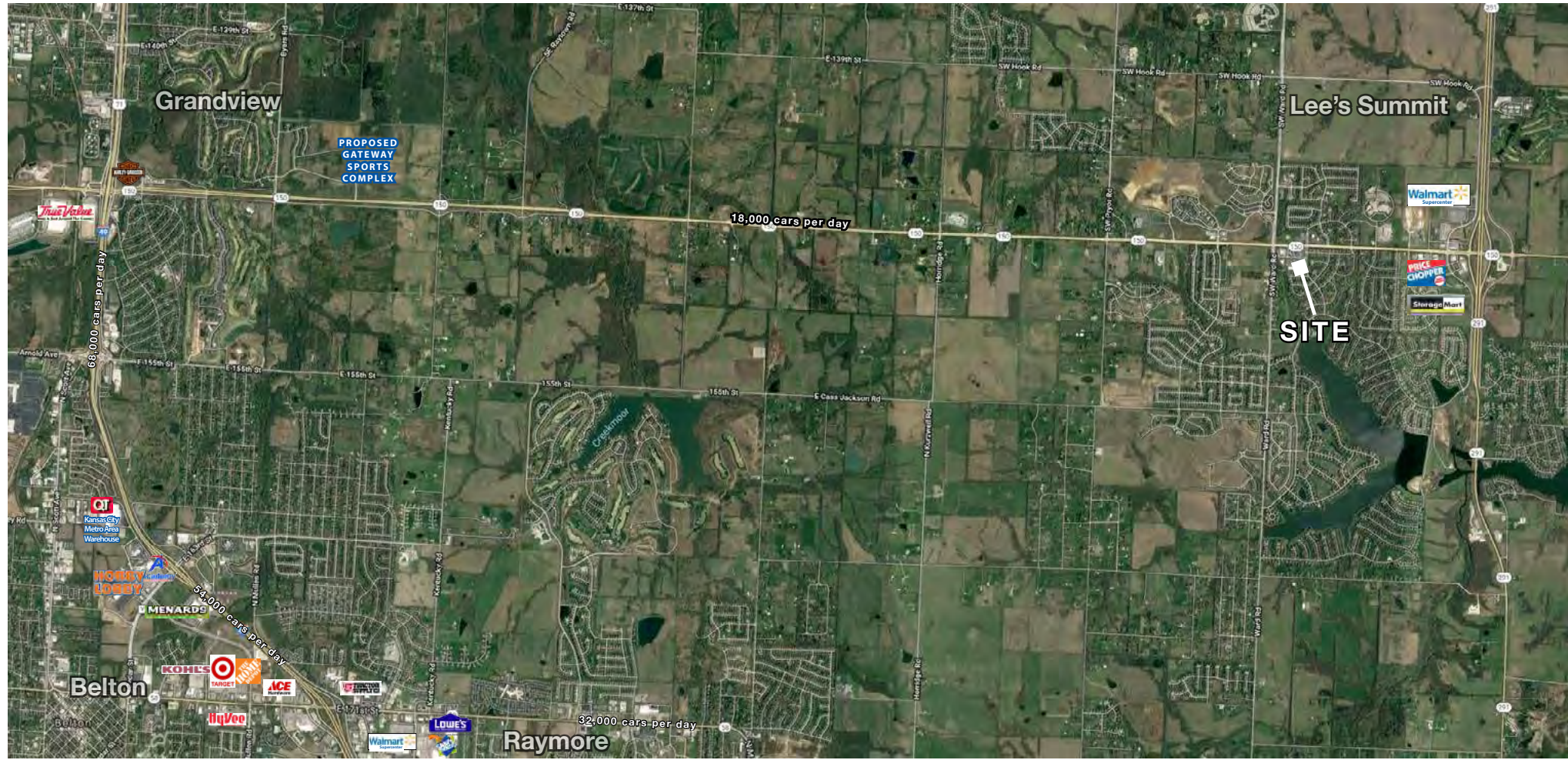
RAINTREE VILLAGE SHOPPING CENTER

RETAIL SPACE AVAILABLE FOR LEASE

150 Hwy & SW Ward Rd (SEC), Lee's Summit, MO

1,602 - 5,231 SF
SPACES
AVAILABLE

AERIAL





RAINTREE VILLAGE SHOPPING CENTER

RETAIL SPACE AVAILABLE FOR LEASE

150 Hwy & SW Ward Rd (SEC), Lee's Summit, MO

1,602 - 5,231 SF
SPACES
AVAILABLE

SITE PLAN



Suite #	Tenant	Square Feet
813	Love Coffee	922
821	AVAILABLE	3,629
829	AVAILABLE	1,602
833	UPS Store	1,627
837	WestSide Bar & Grill	3,148
845	Peace Paws Grooming	735
849	Peace Paws Grooming	1,133
857	AVAILABLE	2,833
861	Envy Salon	1,350
865	Papa John's	1,372
869	Discount Dollar	1,400
873	American Family Insurance	1,139
877	Snap Fitness	1,478
883	Snap Fitness	2,768
889	Dream Nails	1,378
891	Farmers Insurance	1,300
893	AVAILABLE	1,926
899	La Fuente Mexican Restaurant	3,600
TOTAL		33,340



All information furnished regarding property for sale or lease is from sources deemed reliable, but no warranty or representation is made as to the accuracy thereof and the same is subject to errors, omissions, changes of prices, rental or other conditions, prior sale or lease or withdrawal without notice.

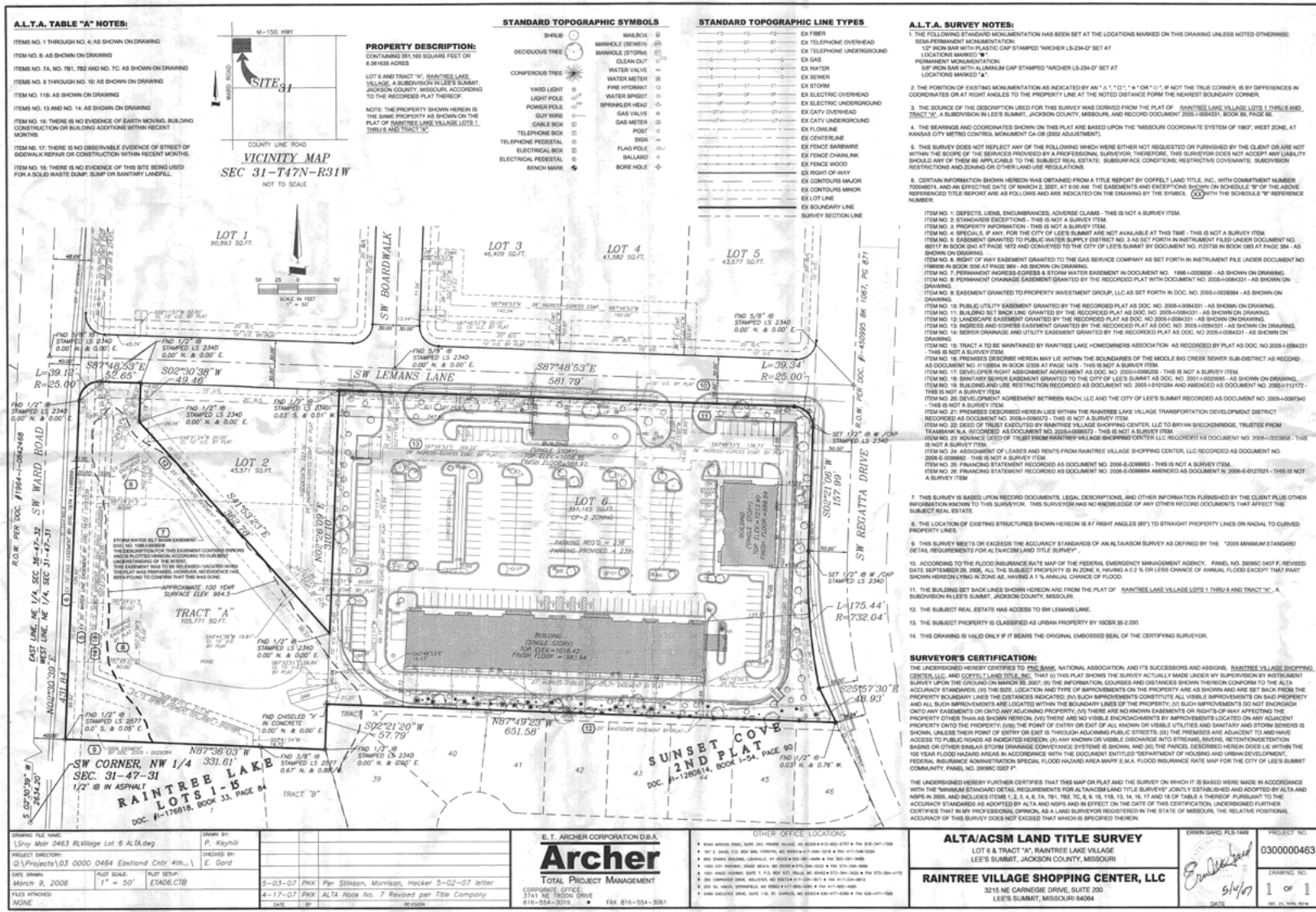
RAINTREE VILLAGE SHOPPING CENTER

RETAIL SPACE AVAILABLE FOR LEASE

150 Hwy & SW Ward Rd (SEC), Lee's Summit, MO

1,602 - 5,231 SF SPACES AVAILABLE

SURVEY



All information furnished regarding property for sale or lease is from sources deemed reliable, but no warranty or representation is made as to the accuracy thereof and the same is subject to errors, omissions, changes of prices, rental or other conditions, prior sale or lease or withdrawal without notice.

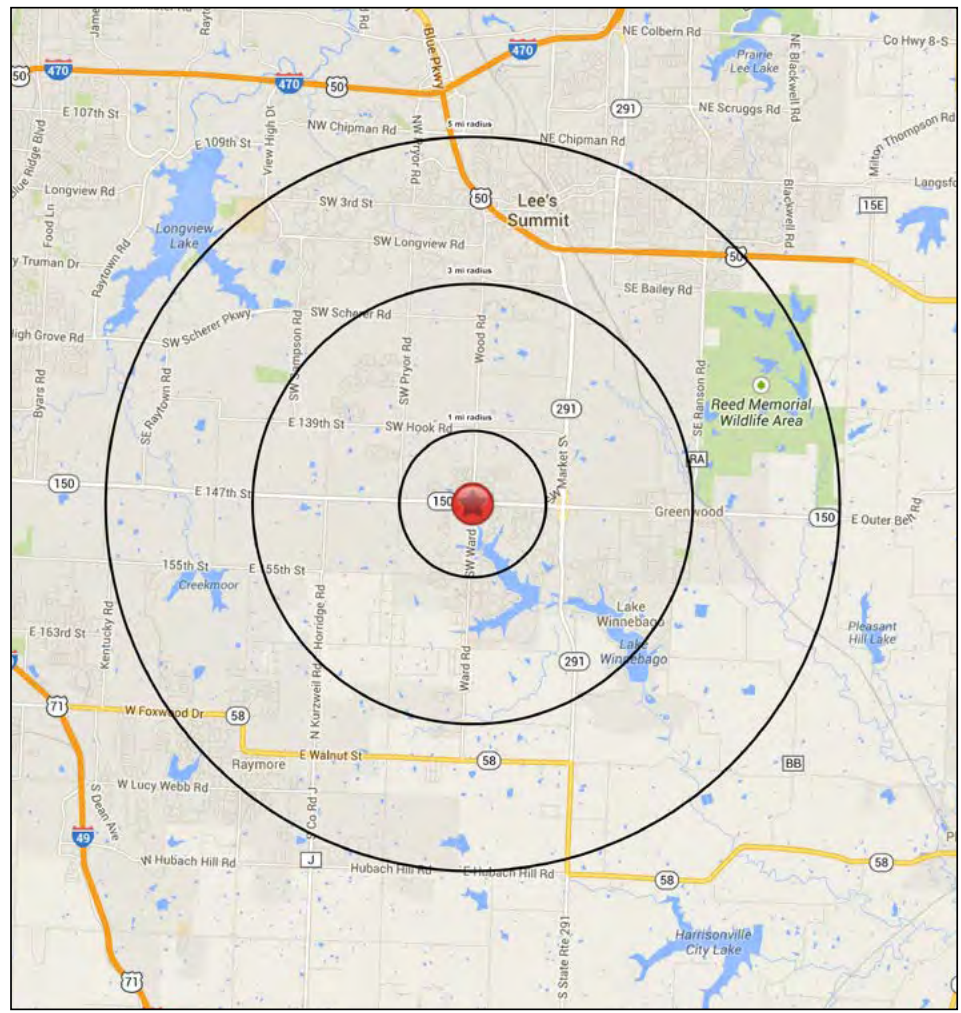
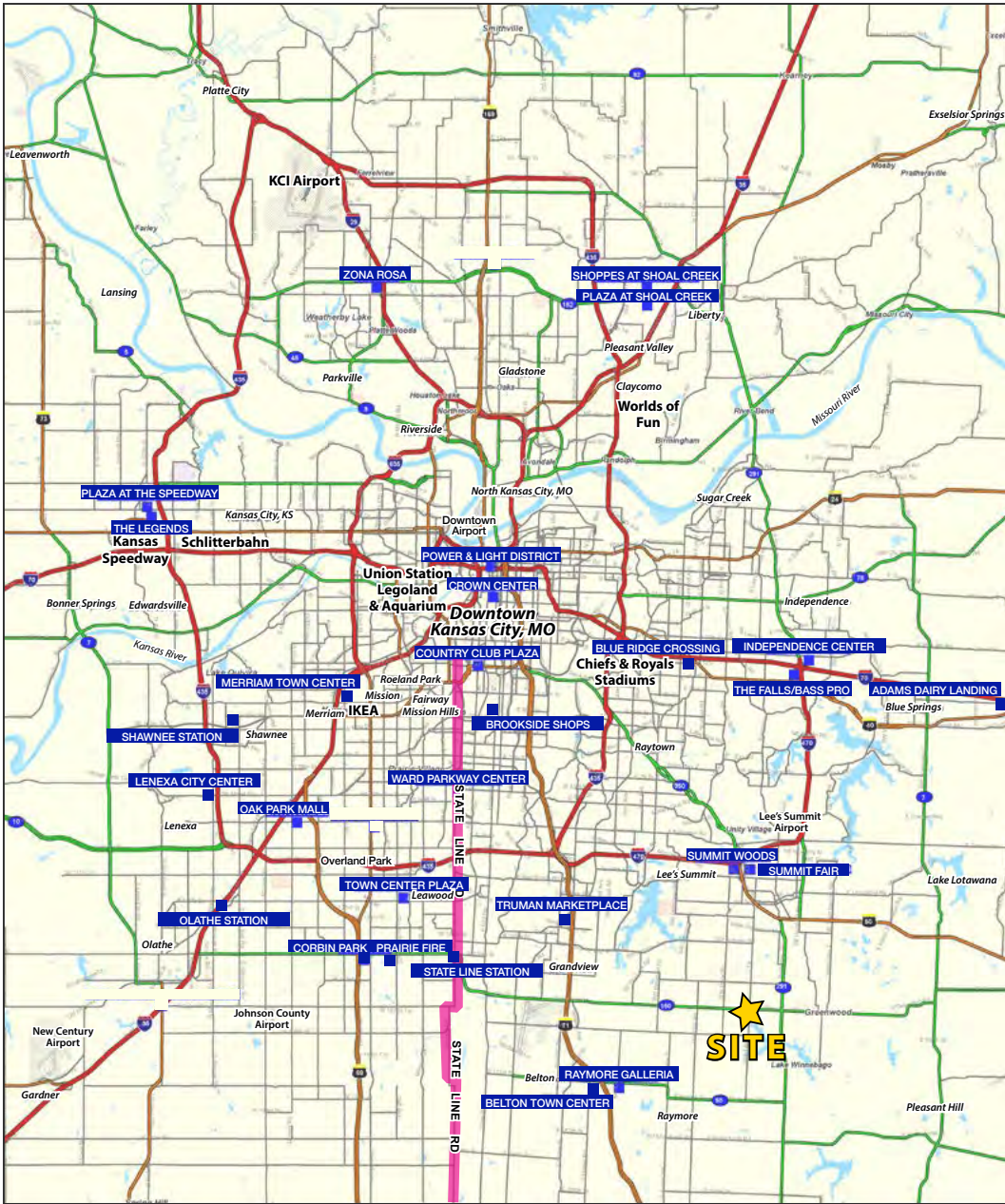


RAINTREE VILLAGE SHOPPING CENTER

RETAIL SPACE AVAILABLE FOR LEASE

150 Hwy & SW Ward Rd (SEC), Lee's Summit, MO

**1,602 - 5,231 SF
SPACES
AVAILABLE**





RAINTREE VILLAGE SHOPPING CENTER

RETAIL SPACE AVAILABLE FOR LEASE

150 Hwy & SW Ward Rd (SEC), Lee's Summit, MO

813-899 SW Lemans Lane		1 mi radius	3 mi radius	5 mi radius
Lee's Summit, MO 64082				
POPULATION	2018 Estimated Population	8,049	25,143	68,490
	2023 Projected Population	8,352	26,167	71,073
	2010 Census Population	7,034	22,836	63,428
	2000 Census Population	3,550	12,348	46,193
	Projected Annual Growth 2018 to 2023	0.8%	0.8%	0.8%
	Historical Annual Growth 2000 to 2018	7.0%	5.8%	2.7%
	2018 Median Age	36.2	36.7	38.7
HOUSEHOLDS	2018 Estimated Households	2,917	9,035	26,909
	2023 Projected Households	3,015	9,341	27,700
	2010 Census Households	2,480	7,954	24,083
	2000 Census Households	1,201	4,238	17,975
	Projected Annual Growth 2018 to 2023	0.7%	0.7%	0.6%
	Historical Annual Growth 2000 to 2018	7.9%	6.3%	2.8%
RACE AND ETHNICITY	2018 Estimated White	86.0%	87.7%	86.9%
	2018 Estimated Black or African American	8.3%	7.1%	7.4%
	2018 Estimated Asian or Pacific Islander	2.4%	1.9%	1.8%
	2018 Estimated American Indian or Native Alaskan	0.3%	0.3%	0.4%
	2018 Estimated Other Races	3.1%	3.0%	3.6%
	2018 Estimated Hispanic	4.1%	3.7%	4.0%
INCOME	2018 Estimated Average Household Income	\$101,873	\$115,543	\$96,128
	2018 Estimated Median Household Income	\$105,160	\$102,586	\$85,863
	2018 Estimated Per Capita Income	\$36,926	\$41,526	\$37,803
EDUCATION (AGE 25+)	2018 Estimated Elementary (Grade Level 0 to 8)	0.7%	0.7%	1.0%
	2018 Estimated Some High School (Grade Level 9 to 11)	3.7%	3.0%	2.9%
	2018 Estimated High School Graduate	17.7%	19.5%	22.8%
	2018 Estimated Some College	21.7%	23.3%	24.9%
	2018 Estimated Associates Degree Only	11.4%	9.1%	8.6%
	2018 Estimated Bachelors Degree Only	32.1%	30.4%	25.5%
	2018 Estimated Graduate Degree	12.7%	14.1%	14.3%
BUSINESS	2018 Estimated Total Businesses	160	436	2,357
	2018 Estimated Total Employees	1,579	4,110	25,638
	2018 Estimated Employee Population per Business	9.9	9.4	10.9
	2018 Estimated Residential Population per Business	50.4	57.7	29.1

